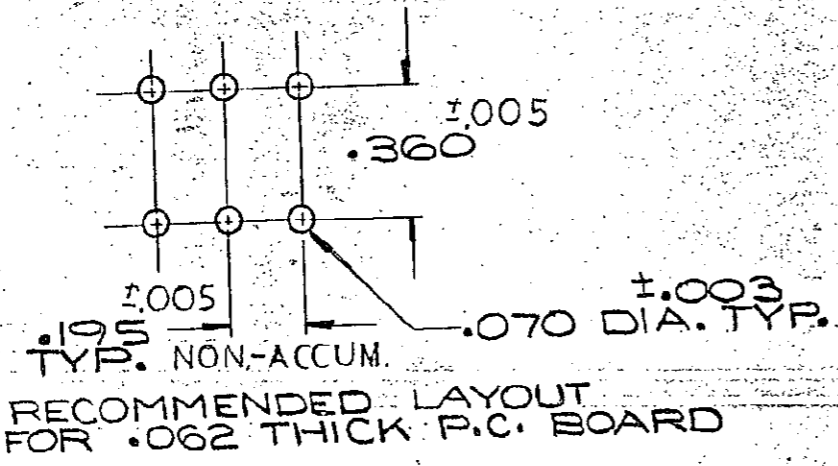
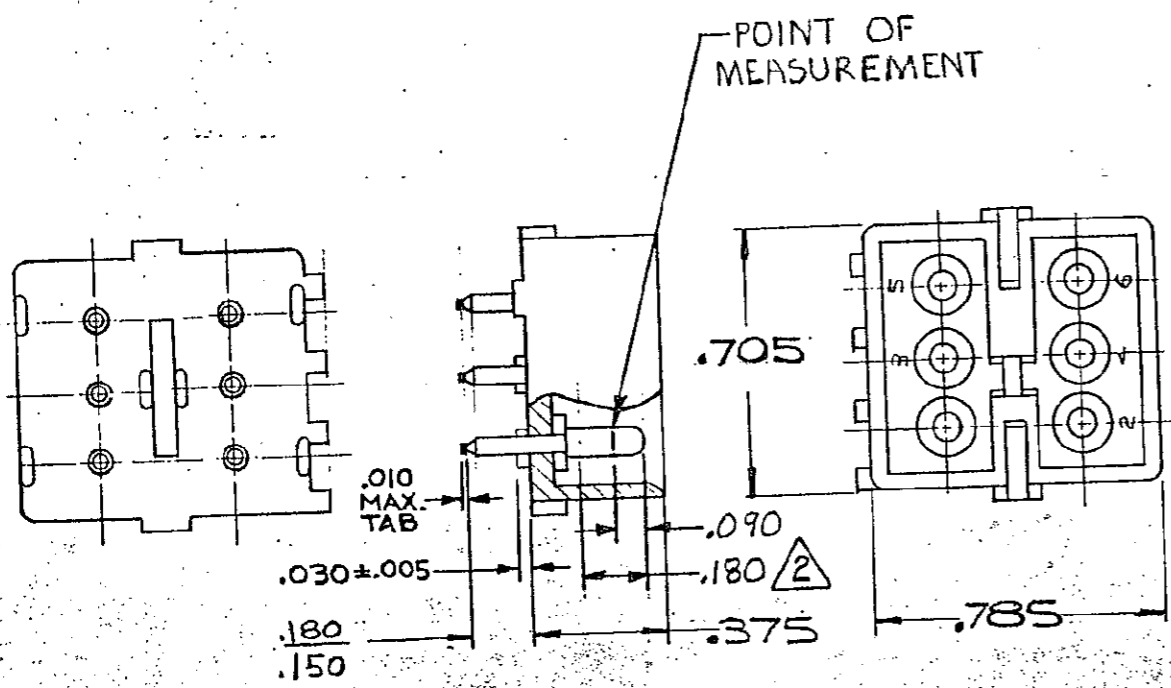


1. PARTS COMPLY WITH TE SOLDERABILITY SPEC. NO. 109-11-3
 2. CONTACT IS PLATED OVERALL WITH .000050 NICKEL, THEN .000030 GOLD OVER CONTACT LENGTH INDICATED AND TIN PLATED ON SOLDER TAIL END.



| ASSEMBLY NO. | HSG. MATL. | COLOR | PIN MATL. | FINISH |
|--------------|------------|---------|--------------|---------|
| 2 - 380999-0 | NYLON | NATURAL | COPPER ALLOY | GOLD |
| 1 - 380999-0 | NYLON | NATURAL | COPPER ALLOY | PRE-TIN |

DIMENSIONS IN INCHES. DO NOT SCALE PRINT.

| | | | | | | | | | | | |
|-----------------|---------------------------|----|-----|----------|---------------------------|--------------------------------------|-------------------|---------------------------|------|---------------------|----------|
| REVISION RECORD | | DR | CHK | DATE | NUMBER 380999 | REQUIRED PER ASSEMBLY DESCRIPTION | DWG SIZE | NUMBER | NAME | REMARKS | ITEM NO. |
| U2 | REVISED PER ECR-13-008342 | AV | RP | 12NOV 13 | | | DR | CHK | DATE | MATERIAL AND FINISH | |
| U1 | REVISED PER ECO-11-005294 | RK | HMR | 12APR 11 | DR | CHK | DATE | SEE TABLE | | TE Connectivity | |
| | | | | | DE | APP | DATE | WIRE - RANGE - INSULATION | | CLASS | |
| | | | | | TOLERANCE EXCEPT AS NOTED | | SCALE | TYPE | | LOC | NO |
| | | | | | ± .015 ± 1° 0' | | 1/1 | PIN HEADER | | CM | B 380999 |
| | | | | | NAME | | P.C. BOARD HEADER | | U2 | | |