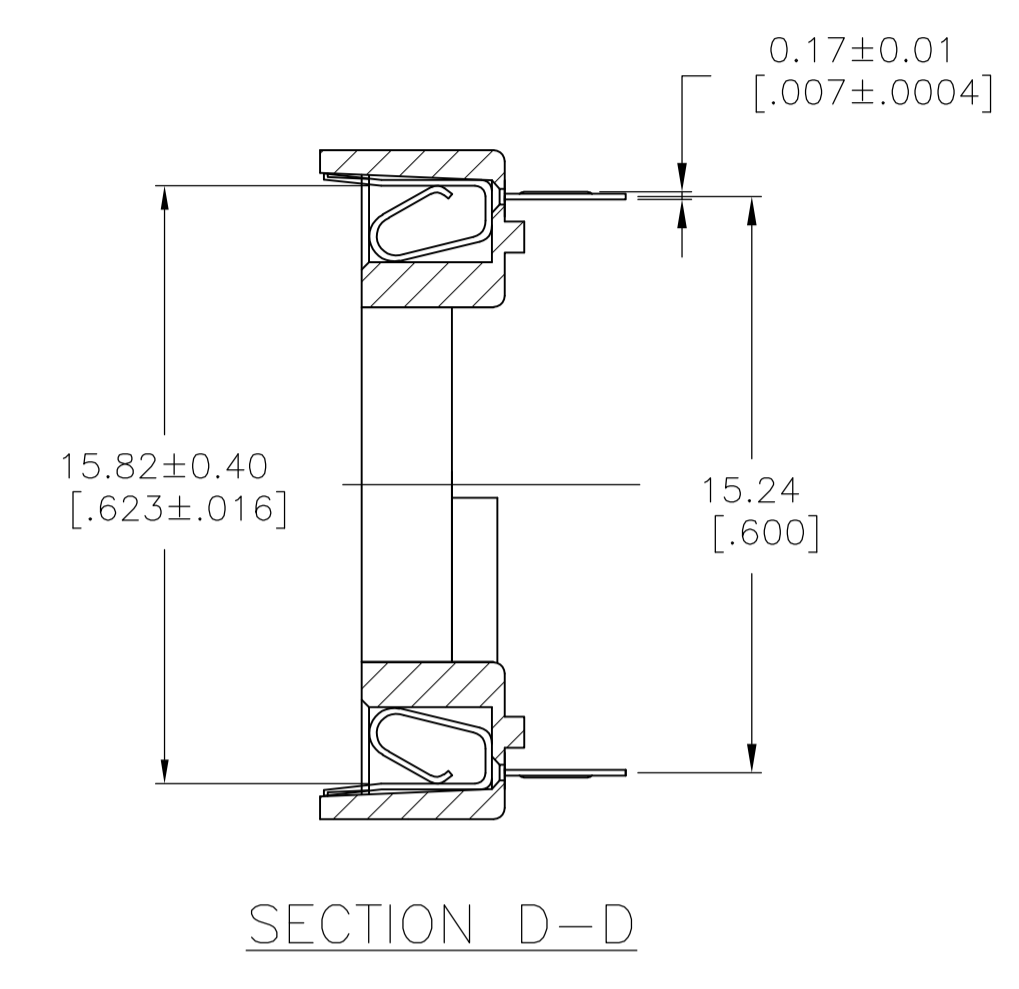
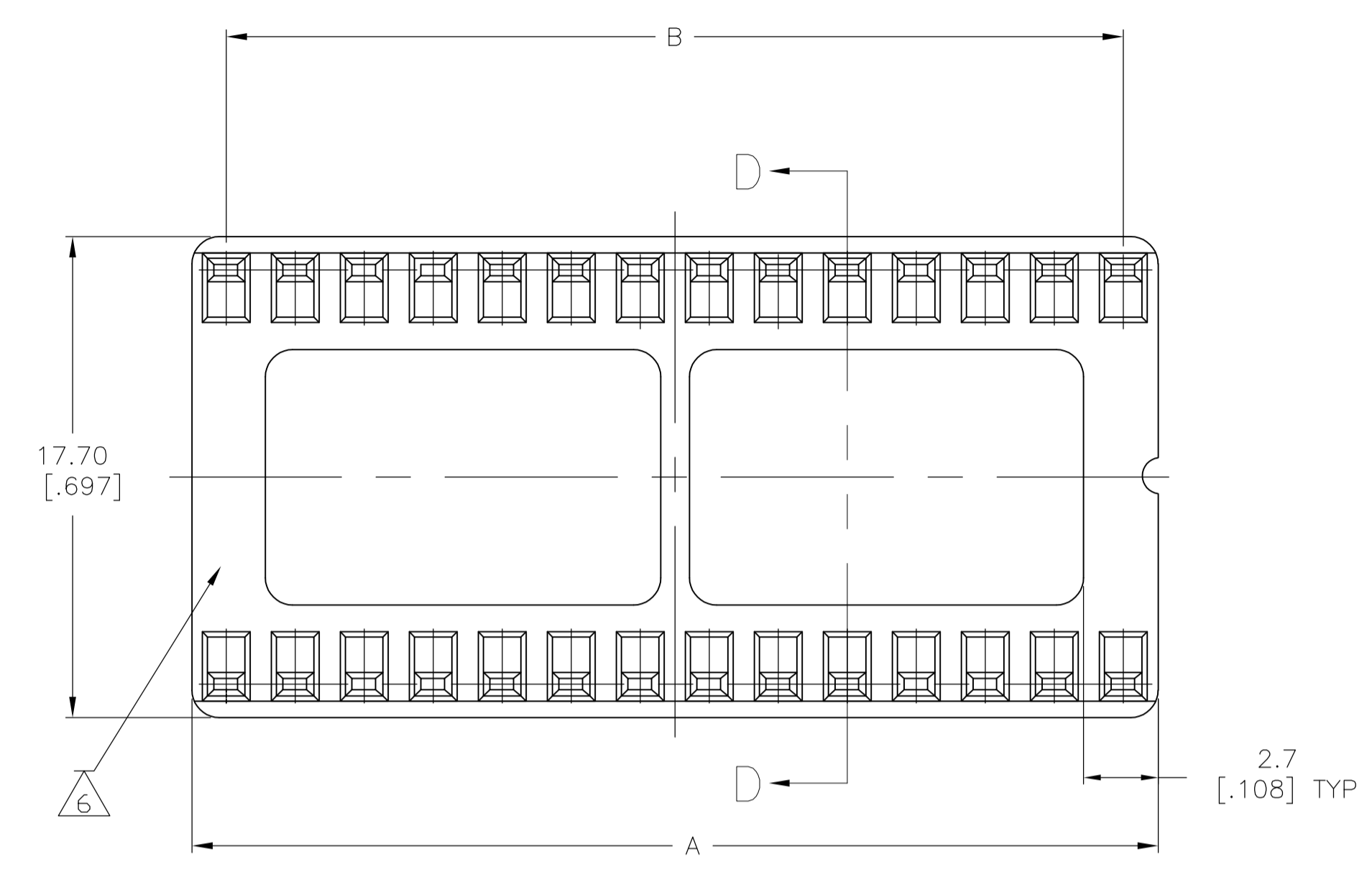
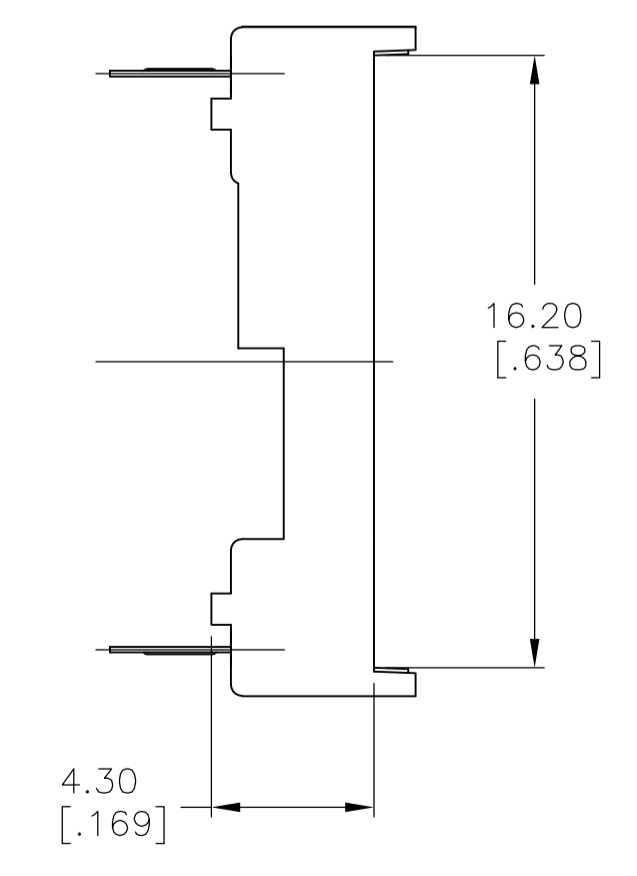
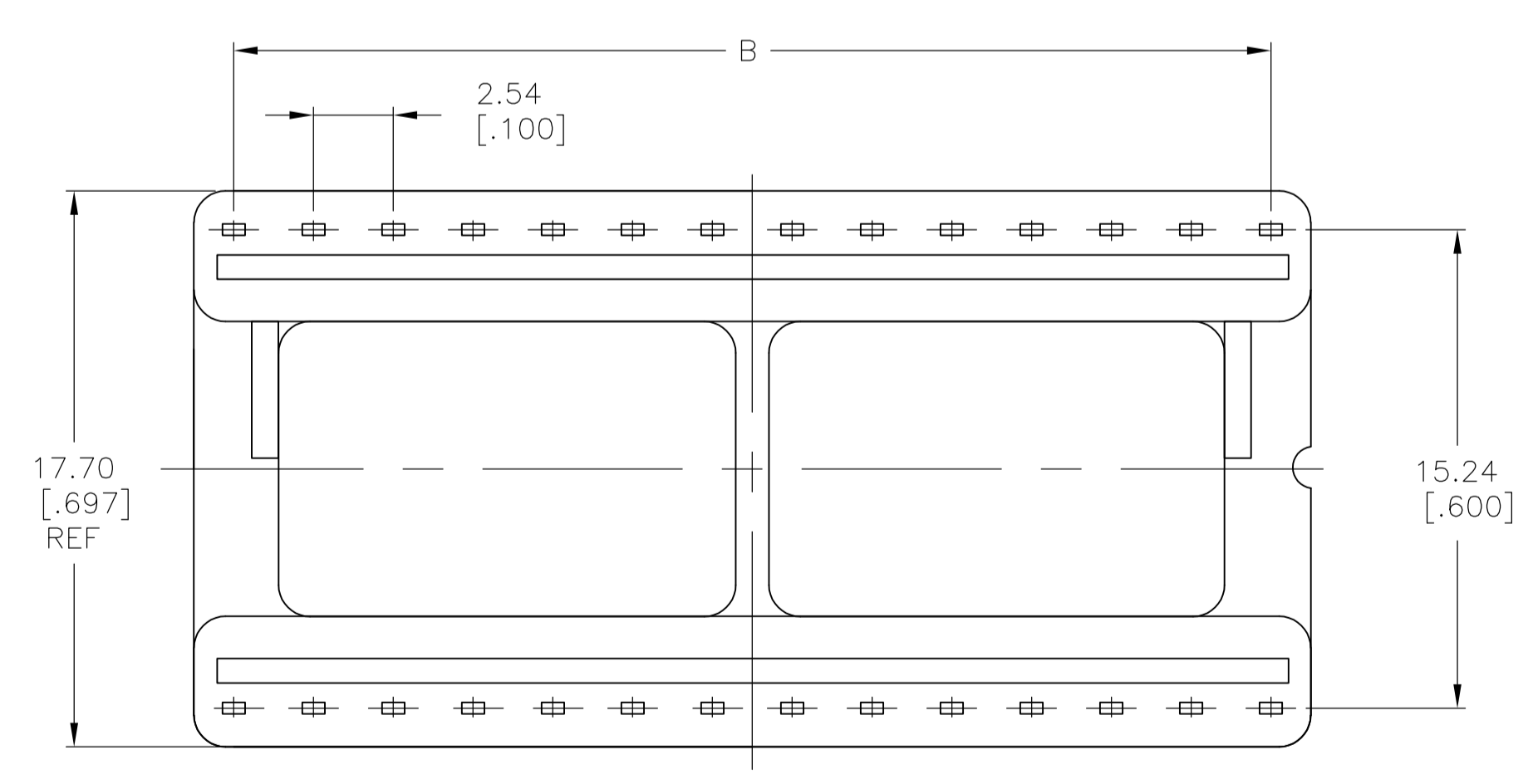
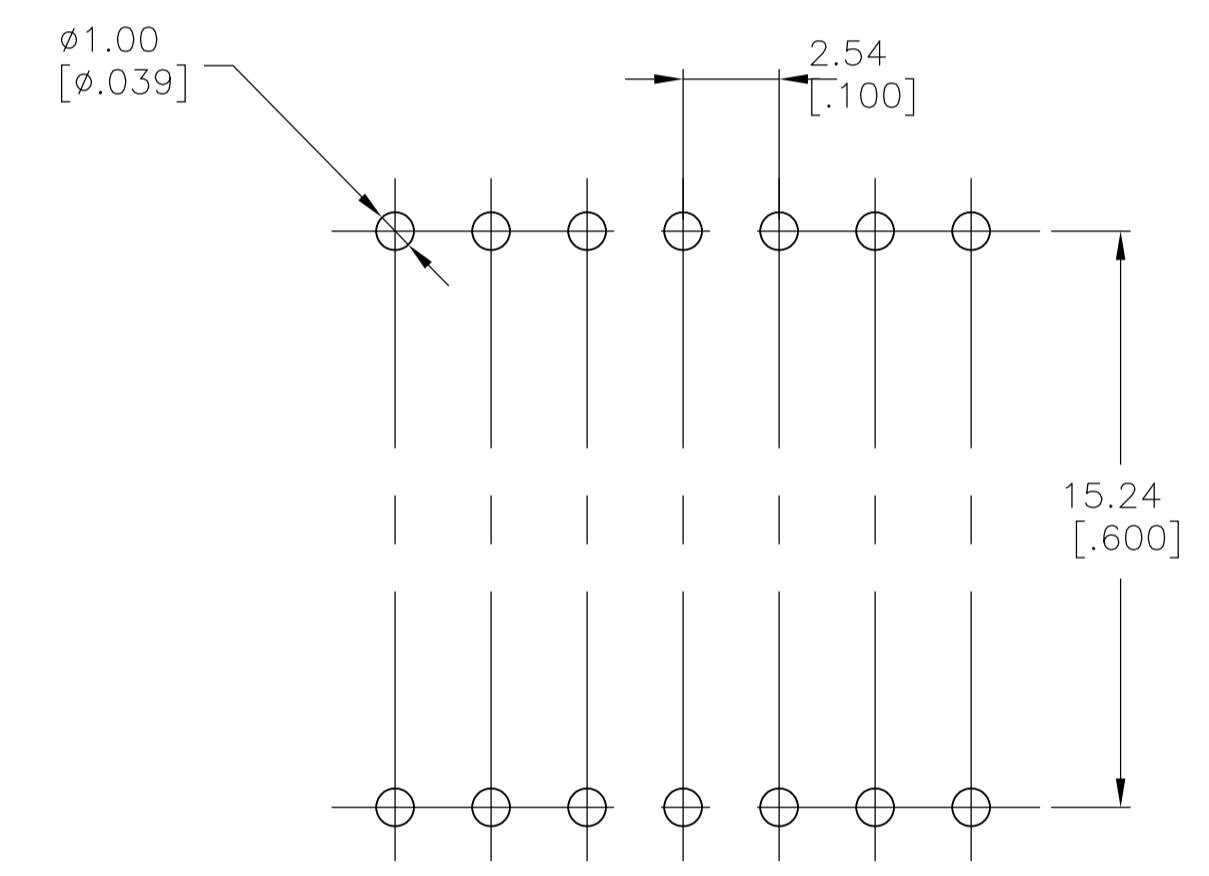
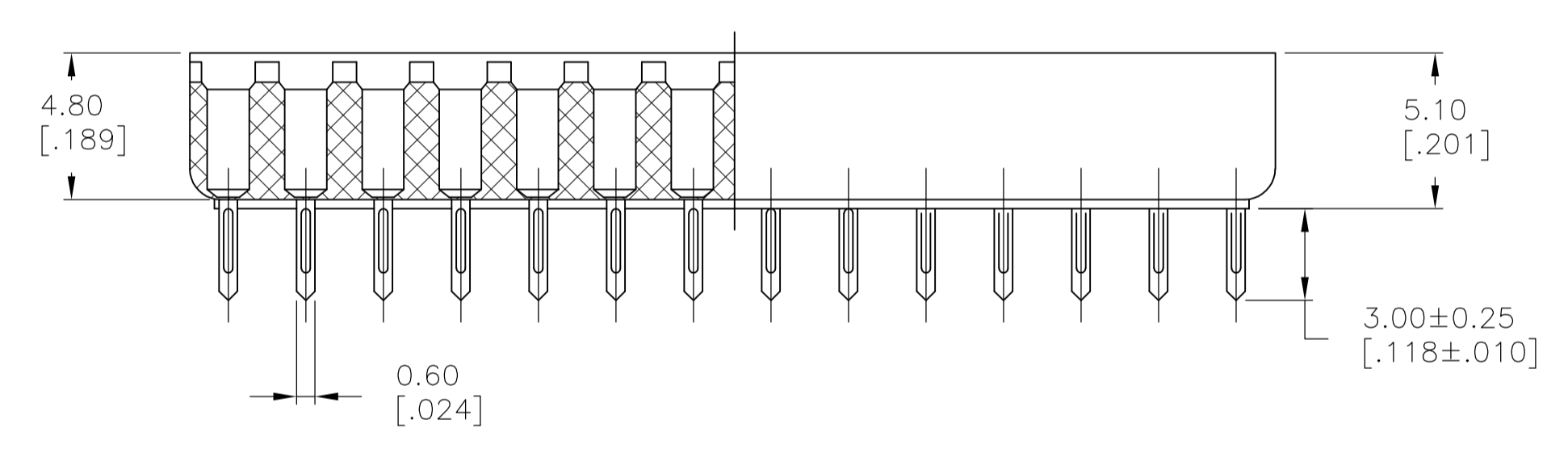


LOC		DIST		REVISIONS			
P	LTR	DESCRIPTION	DATE	DN	APVD		
M2		ECR-13-016896	06NOV2013	W.W.	C.W.		



- NOTE:
- MATERIAL:
HOUSING: 30% GLASS FILLED PBT, THERMOPLASTIC, BLACK.
CONTACT: PHOS BRONZE
 - FINISH: CONTACT PLATING: TIN-LEAD (60μ INCHES MIN.)
SOLDERABILITY :95% COVERAGE MIN.;
TEST TEMPERATURE=230°C±5°C
TEST TIME = 5±5 SECONDS.
 - MECHANICAL SPECS:
DURABILITY: 50 CYCLES MIN.
INSERTION FORCE:300 GRAMS MAX.
WITHDRAWAL FORCE: 20 GRAMS MIN.
CONTACT RETENTION: 500 GRAMS MIN.
ACCEPTS: 0.20-0.30 [.008-.012] LEADS
 - ELECTRICAL SPECS:
VOLTAGE RATING: 250V AC,DC
CONTACT RESISTANCE: 20 MILLOHMS MAX.
CURRENT RATING: 1 AMPERE AC,DC
INSULATION RESISTANCE: 1000 MEGOHMS MIN.
DIELECTRIC WITHSTANDING VOLTAGE: AC 1000 V MIN.
 - OPERATING TEMPERATURE: -40°C TO +105°C
 - AMP LOGO
 - FINISH: CONTACT PLATING TIN (LEAD FREE); 60 UIN MIN. OVER 30 UIN Ni
SOLDERABILITY :95% COVERAGE MIN.;
TEST TEMPERATURE=260'±5°C;
TEST TIME = 5±5 SECONDS.



(M2)	OBSOLETE	△	48	60.96 [2.400]	58.42 [2.300]	1-390262-7	
(M2)	OBSOLETE	△	42	53.34 [2.100]	50.8 [2.000]	1-390262-6	
		△	40	50.80 [2.000]	48.26 [1.900]	1-390262-5	
(M2)	OBSOLETE	△	32	40.64 [1.600]	38.10 [1.500]	1-390262-3	
		△	28	35.56 [1.400]	33.02 [1.300]	1-390262-2	
(M2)	OBSOLETE	△	24	30.48 [1.200]	27.94 [1.100]	1-390262-1	
	SUPERSEDED BY 1-390262-7	△	48	60.96 [2.400]	58.42 [2.300]	390262-7	
	SUPERSEDED BY 1-390262-6	△	42	53.34 [2.100]	50.8 [2.000]	390262-6	
	SUPERSEDED BY 1-390262-5	△	40	50.80 [2.000]	48.26 [1.900]	390262-5	
	SUPERSEDED BY 1-390262-3	△	32	40.64 [1.600]	38.10 [1.500]	390262-3	
	SUPERSEDED BY 1-390262-2	△	28	35.56 [1.400]	33.02 [1.300]	390262-2	
	SUPERSEDED BY 1-390262-1	△	24	30.48 [1.200]	27.94 [1.100]	390262-1	
			FINISH	POS	A±0.20 [.008]	B±0.15 [.006]	PART NO.

THIS DRAWING IS A CONTROLLED DOCUMENT. DIN BSV 07SEP04

DIMENSIONS: mm [INCHES]	TOLERANCES UNLESS OTHERWISE SPECIFIED:	APVD	NAME
0 PLC ±	1 PLC ±		DIP SOCKET, .600 CENTER LINE LADDER STYLE
2 PLC ±	3 PLC ± 0.2[.008]	PRODUCT SPEC	
4 PLC ±	ANGLES ±	APPLICATION SPEC	
MATERIAL	FINISH	SIZE	CAGE CODE
1	2-7	A1	-
CUSTOMER DRAWING		SCALE	SHEET
		5:1	1 of 1

STE TE Connectivity
 DRAWING NO: 390262
 SHEET 1 OF 1
 REV M2