

THIS DRAWING IS UNPUBLISHED.

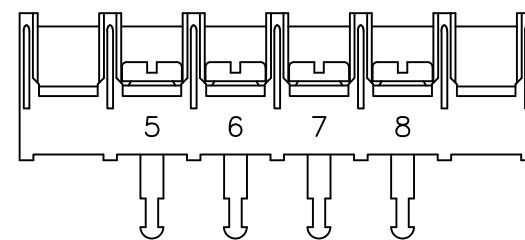
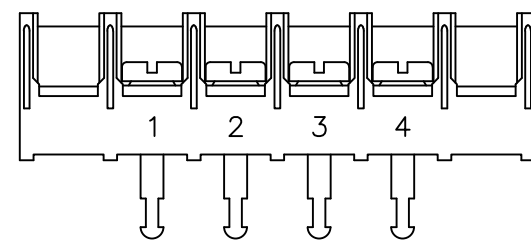
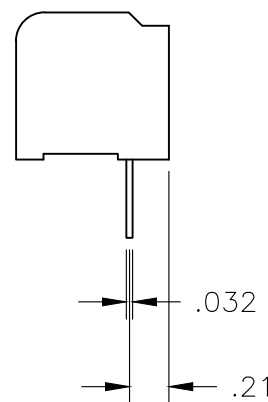
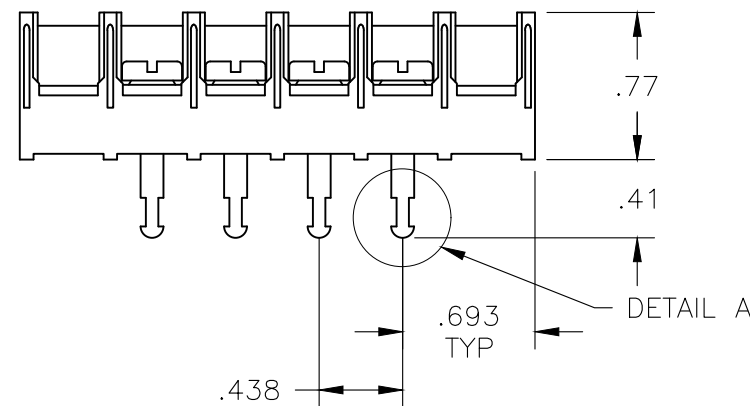
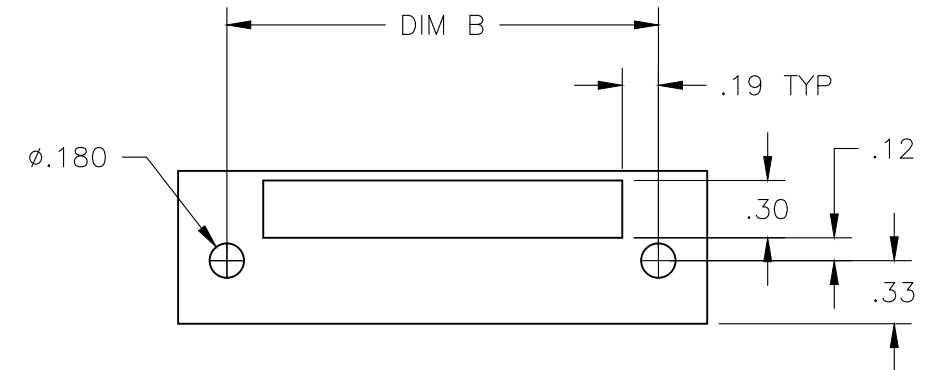
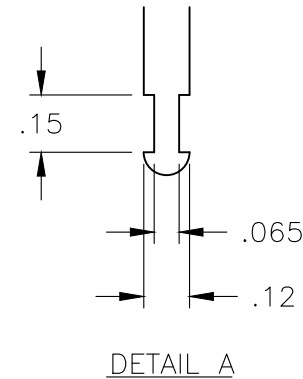
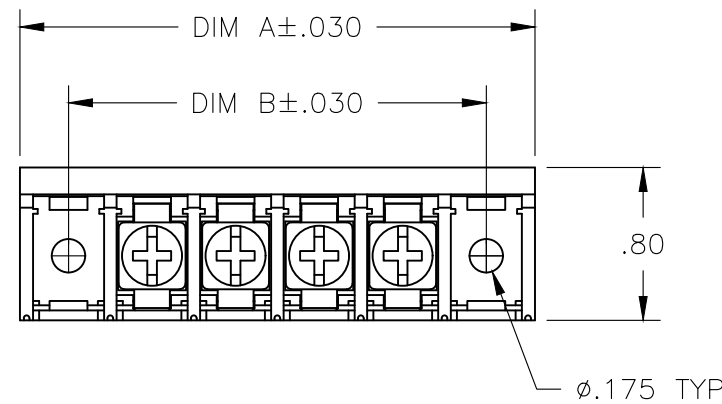
RELEASED FOR PUBLICATION

© COPYRIGHT — TE Connectivity Ltd.

ALL RIGHTS RESERVED.

REVISIONS

P	LTR	DESCRIPTION	DATE	DWN	APVD
	D1	PART STATUS UPDATED	22JAN2018	RK	PS



~~1-796857-9~~ 1

~~2-796857-0~~ 1

MATERIAL:
HOUSING: THERMOPLASTIC, UL94V-0, BLACK.
TERMINALS: BRIGHT TIN PLATED COPPER ALLOY.
SCREWS: 8-32, ZINC PLATED STEEL.

ELECTRICAL:
CURRENT RATING: 30A
VOLTAGE RATING: 600V
WIRE RANGE: 10-18 AWG (UL)
10-22 AWG (CSA)

ENVIRONMENTAL:
RECOMMENDED TORQUE: 20 IN-LB.
OPERATING TEMP.: -40°C TO +120°C

1 OBSOLETE PARTS: OBSOLETE CIS STREAMLINING PER D.RENAUD/D.SINISI

OBSOLETE	8.312	8.823	18	8STV-18-006	1-796857-8
	7.875	8.385	17	8STV-17-006	1-796857-7
	7.437	7.948	16	8STV-16-006	1-796857-6
	7.000	7.510	15	8STV-15-006	796857-2
	6.562	7.073	14	8STV-14-006	1-796857-4
	6.125	6.635	13	8STV-13-006	1-796857-3
	5.687	6.198	12	8STV-12-006	6-1437659-6
	5.250	5.760	11	8STV-11-006	1-796857-1
	4.812	5.323	10	8STV-10-006	6-1437659-4
	4.375	4.885	9	8STV-09-006	6-1437659-3
	3.937	4.448	8	8STV-08-006	796857-8
	3.500	4.010	7	8STV-07-006	796857-7
	3.062	3.573	6	8STV-06-006	796857-1
	2.625	3.135	5	8STV-05-006	796857-6
1	2.187	2.698	4	8STV-04-660	2-796857-0
OBSOLETE	2.187	2.698	4	8STV-04-659	1-796857-9
OBSOLETE	2.187	2.698	4	8STV-04-006	5-1437659-2
	1.750	2.260	3	8STV-03-006	4-1437659-8
OBSOLETE	1.313	1.823	2	8STV-02-006	796857-5
	DIM B	DIM A	NO OF POS	CATALOG NUMBER	TE PART NO

THIS DRAWING IS A CONTROLLED DOCUMENT.

DIMENSIONS: INCHES	TOLERANCES UNLESS OTHERWISE SPECIFIED:
	0 PLC ± - 1 PLC ± - 2 PLC ± .01 3 PLC ± .005 4 PLC ± - ANGLES ± 2°
MATERIAL	FINISH
-	-

DWN	S SCHLEGEL	2/6/04
CHK	H WAKEEM	2/6/04
APVD	S YODER	2/6/04
PRODUCT SPEC	-	
APPLICATION SPEC	-	
WEIGHT	-	
CUSTOMER DRAWING		



TE Connectivity Ltd.

NAME				
8STV-XX-006 ASSEMBLY				
SIZE	CAGE CODE	DRAWING NO	RESTRICTED TO	
A3	00779	C-4-1437659-8	-	
SCALE			SHEET	REV
1:1			1 OF 1	D1