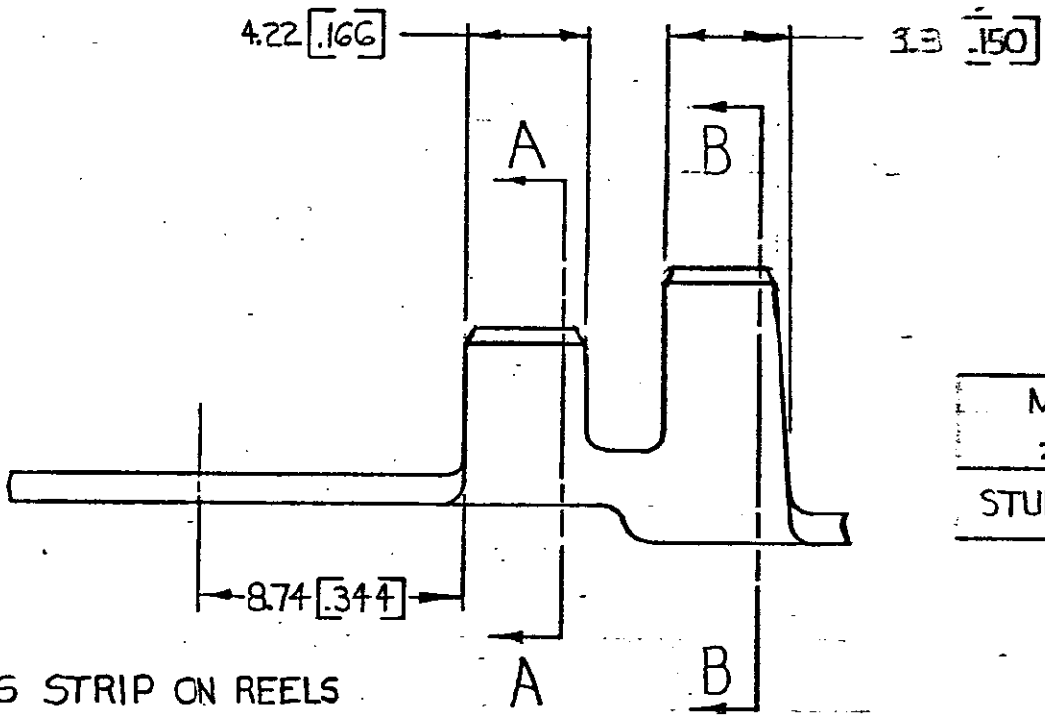
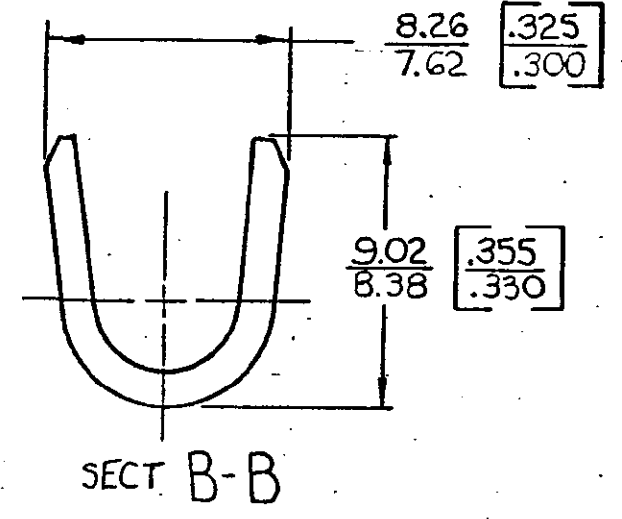
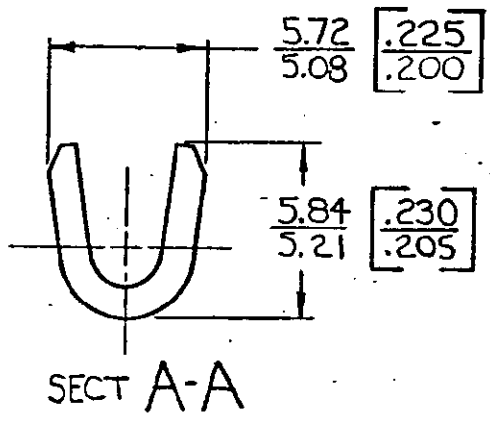
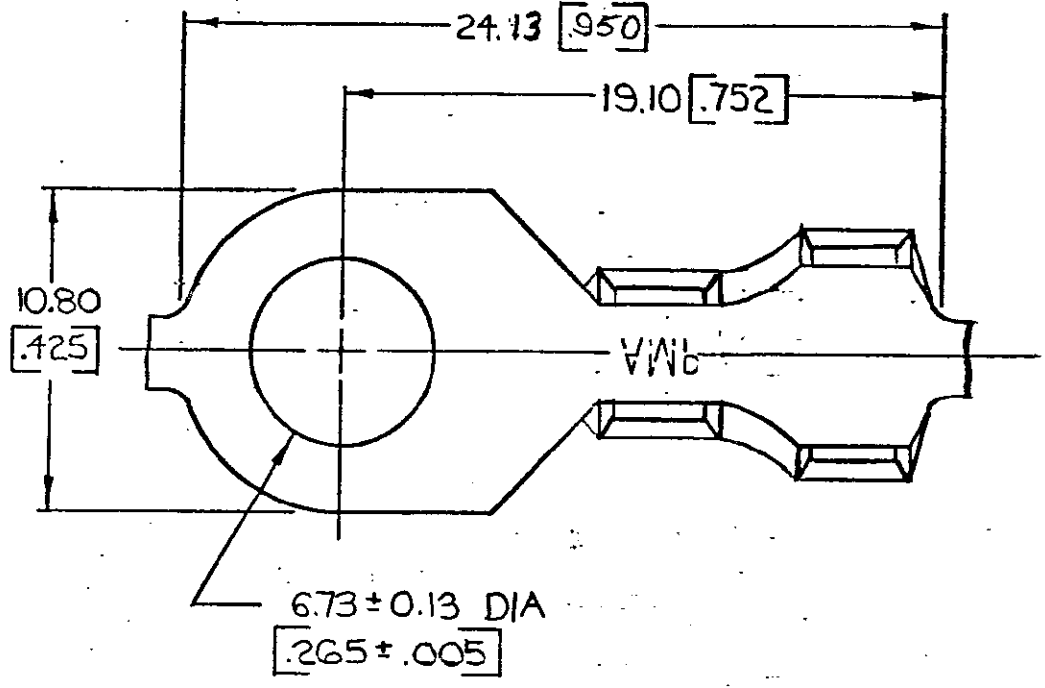


© COPYRIGHT 1968 BY AMP INCORPORATED, HARRISBURG, PA.  
 ALL INTERNATIONAL RIGHTS RESERVED. AMP INCORPORATED PRODUCTS  
 COVERED BY U. S. AND FOREIGN PATENTS AND/OR PATENTS PENDING.

		REVISIONS			LOC	DIST
P	F	ZONE	LTR	DESCRIPTION	DATE	APPROVED
			A	REDRAWN & REVISED A-3943	4-26-78	DG
			B	REVISED PER A-5939	4/15/83	SS/yl
			C	REV PER AF-8047	8/18/92	PAE BT
			D	REV PER D710-037-96	12/6/92	PAE/64



MG 1/4	2.0 - 3.0 mm <sup>2</sup> [4 - 12]	4.32 - 5.33 [.170 - .210]	NONE	102 BRASS [040]	41604
STUD SIZE	WIRE RANGE	INSULATION RANGE	FINISH	MATERIAL	PART NO

UNLESS OTHERWISE SPECIFIED DIMENSIONS ARE IN INCHES. MM TOLERANCES ON DECIMALS ±0.38 [0.15] ANGLES ±1°0'		CONTRACT NO		AMP INCORPORATED Harrisburg, Pa.
MATERIAL SEE TABLE		DR Donald Q Wood 4/26/79		
FINISH SEE TABLE		CHK James D Davis 7-20-78		NAME RING
		APPD R.P. Franz 8-10-78		
		APPD G. Zwick 8-10-78		SIZE B
		DSGN APPD		
		OTHER APPD		CODE IDENT NO 00779
				DRAWING NO 41604
				SCALE
				SHEET

**METRIC**

1. CONTINUOUS STRIP ON REELS  
 2. DIMENSIONS IN BRACKETS ARE IN INCHES