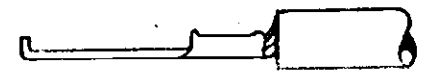


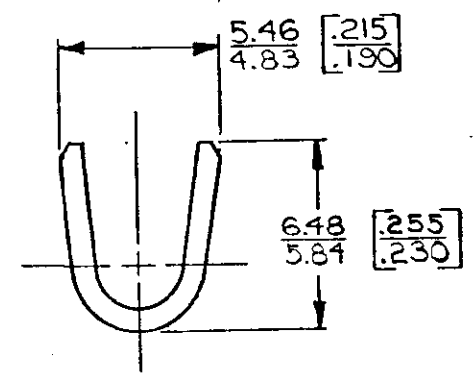
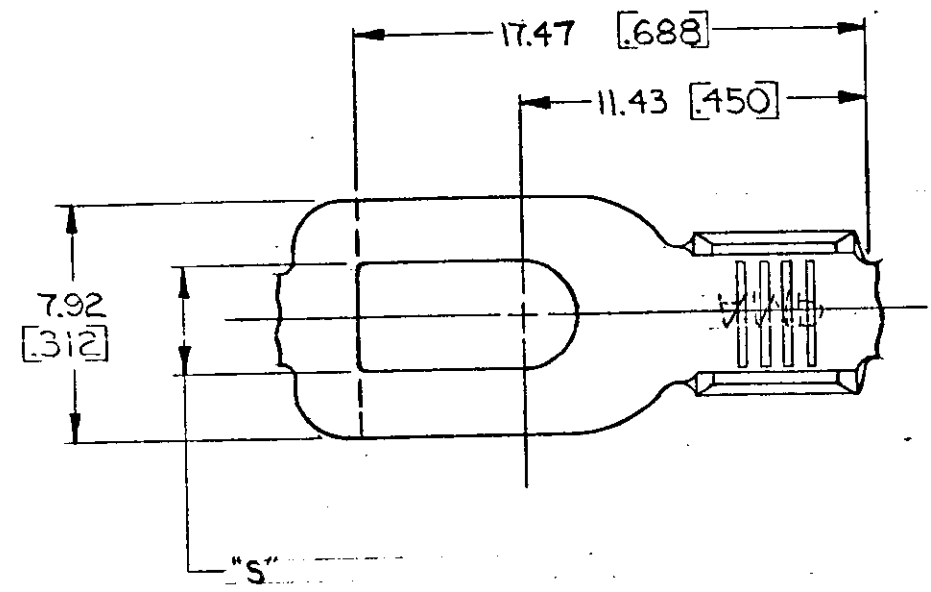
4 DRAWING MADE IN THIRD ANGLE PROJECTION

© COPYRIGHT 1968 BY AMP INCORPORATED, HARRISBURG, PA. ALL INTERNATIONAL RIGHTS RESERVED. AMP INCORPORATED PRODUCTS COVERED BY U. S. AND FOREIGN PATENTS AND/OR PATENTS PENDING.

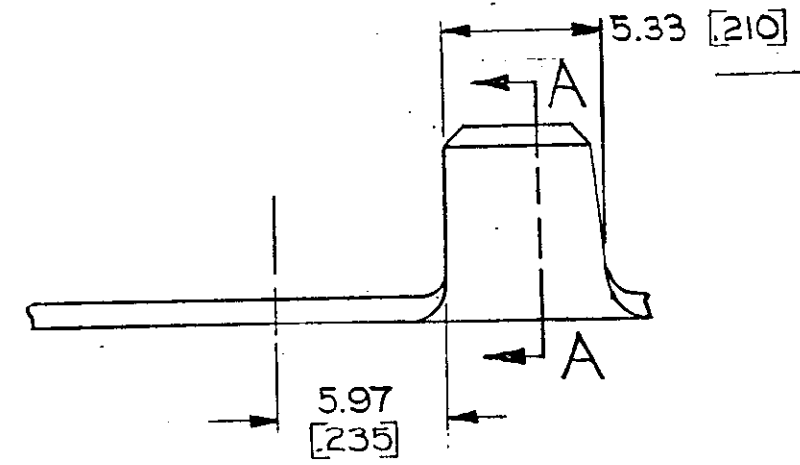
REVISIONS					
P	ZONE	LTR	DESCRIPTION	DATE	APPROVED
✓		A	REDRAWN & REVISED A-3943 L.M.	1/5/78	SS/
✓		B	REVISED AFD169	5/15/84	584/84
✓		C	OBS. - 4 AF-1556	7/10/86	7/1/84
✓		D	OBS. - 1 AF-3662	5/16/88	7ms/84
✓		E	REV PER AF-6785	7/5/90	PMF/91
✓		F	REV PER 0110-0090-97	2/16/87	PMF/84



FLANGED IN APPLICATOR



SECT A-A



4.34 [71]	M 4 #8	3.0-5.0 mm <sup>2</sup> [2-10]	SILVER	0.76 [030] BRASS	△ 42113-4A
3.68 [45]	M 3.5 #6				42113-4
4.34 [71]	M 4 #8	3.0-5.0 mm <sup>2</sup> [2-10]	TIN	0.76 [030] BRASS	△ 42113-3A
3.68 [45]	M 3.5 #6				42113-3
"S" ±0.07 [003]	STUD SIZE	WIRE RANGE	FINISH	MATERIAL	△ 42113-2A
					42113-2
					△ 42113-1A
					42113-1
					PART NO

- △ SUFFIX LETTER MUST BE USED ONLY WHEN ORDERING APPLICATOR TOOLING
- 2. CONTINUOUS STRIP ON REELS.
- 3. DIMENSIONS IN BRACKETS ARE IN INCHES

**METRIC**

UNLESS OTHERWISE SPECIFIED DIMENSIONS ARE IN mm TOLERANCES ON: DECIMALS ±0.38 [015] ANGLES ±1°

CONTRACT NO. DR. *L. Magano* 5/1/78

CHK. *S. Schaff* 11/20/78

APPR. *R.D. Frantz* 8-10-78

APPR. *C. Zucko* 8-10-78

OTHER APPD.

AMP INCORPORATED Harrisburg, Pa.

NAME: SPADE

SIZE: B CODE IDENT NO: 00779 DRAWING NO: 42113

SCALE: SHEET:

CUSTOMER DRAWING