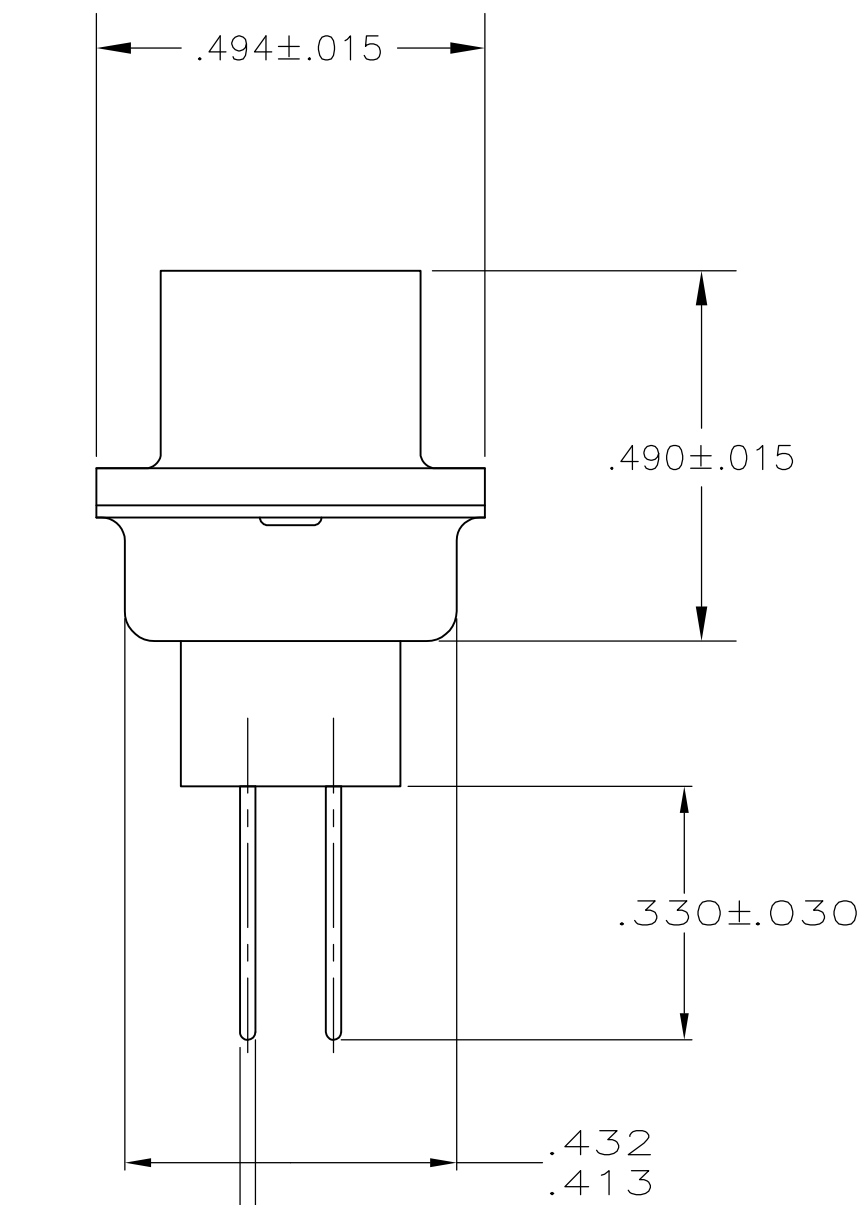
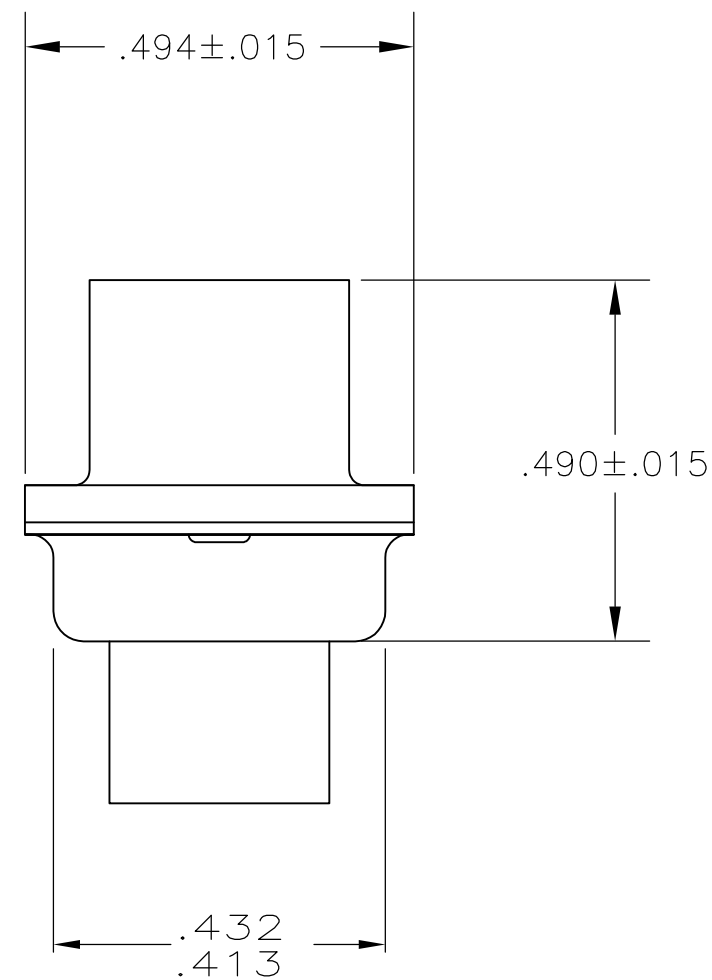
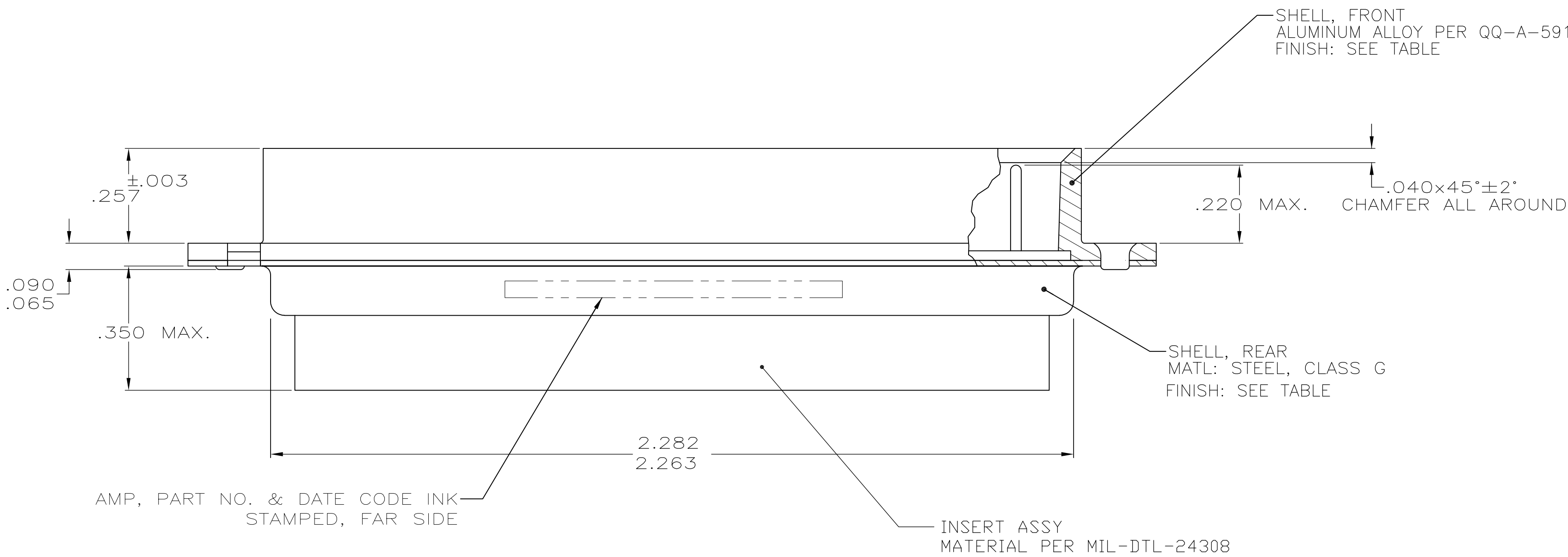
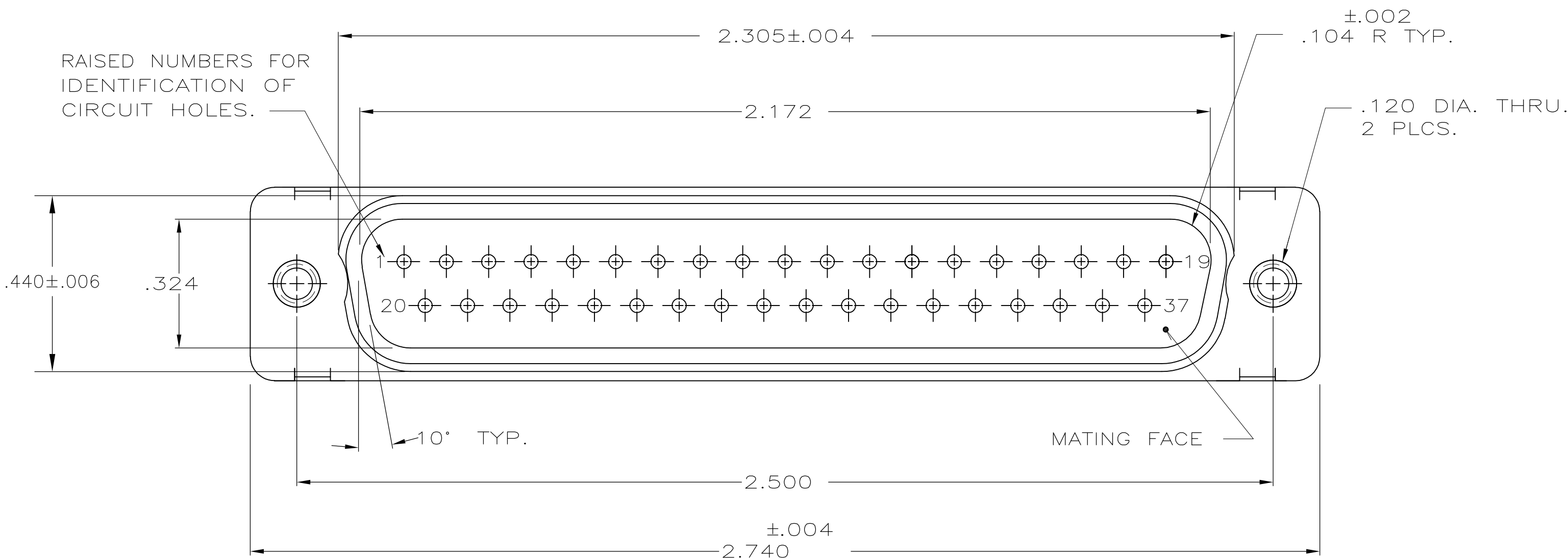


LOC		DIST		REVISIONS					
—		—		P	LTR	DESCRIPTION	DATE	DWN	APVD
					N	REV PER ECO 15-005909	5-19-15	CT	DM



- THIS PLUG WILL MATE WITH ANY 37 POSN.,SIZE 4 RECEPTACLE IN AMPLIMITE SERIES.
- MAXIMUM WIRE INSULATION TO BE USED WITH THIS PLUG IS .068 DIA.
- SST RETENTION CLIPS ARE INCLUDED IN INSERTS.
- THIS PLUG IS DESIGNED TO CONFORM TO THE LATEST ISSUE OF MIL-C-24308.
- THE -1, -3 & 5--1 CONNECTORS ARE SUPPLIED WITHOUT CONTACTS. THE -2 AND -4 CONNECTORS ARE SUPPLIRD WITH CONTACTS THAT ARE KIT PACKAGED. -5 AND -6 CONNECTORS ARE SUPPLIED WITH CONTACTS THAT ARE LOADED IN CONNECTOR
- THIS PLUG WILL ACCEPT SIZE 20 DM PIN CONTACT M39029/64-369 OR ANY AMP SIZE 20 DF PIN CONTACT.
- FINISH: CADMIUM PER QQ-P-416; YELLOW CHROMATE.
- FINISH: TIN PLATED PER MIL-T-10727 OVER COPPER PER MIL-C-14550.
- FINISH: ZINC PLATED PER ASTM-B-633 .000200 MIN THK WITH SUPPLEMENTARY CHROMATE (Cr3+).

PRELIMINARY NOT RELEASED FOR PRODUCTION	-	9	AS SHOWN	5-445008-1
PRELIMINARY NOT RELEASED FOR PRODUCTION	.030 REF	7	AS SHOWN IN VIEW T	445008-6
PRELIMINARY NOT RELEASED FOR PRODUCTION	.018 REF	7	AS SHOWN IN VIEW T	445008-5
PRELIMINARY NOT RELEASED FOR PRODUCTION	-	8	KIT WITH CONTACTS	445008-4
PRELIMINARY NOT RELEASED FOR PRODUCTION	-	8	AS SHOWN	445008-3
PRELIMINARY NOT RELEASED FOR PRODUCTION	-	7	KIT WITH CONTACTS	445008-2
PRELIMINARY NOT RELEASED FOR PRODUCTION	-	7	AS SHOWN	445008-1
DIM A		SHELL FINISH		PART NUMBER

THIS DRAWING IS A CONTROLLED DOCUMENT.		DWN S. GLATFELTER 10-17-85	TE Connectivity	
DIMENSIONS: INCHES		CHK F. BALLEW 10-17-85		
TOLERANCES UNLESS OTHERWISE SPECIFIED:	0 PLC ± .005 1 PLC ± .005 2 PLC ± .005 3 PLC ± .005 4 PLC ± .005 ANGLES ± .005	APVD F. BALLEW 10-17-85	NAME	
		APPLICATION SPEC	PLUG ASSEMBLY,AMPLIMITE 37 POSN,SIZE 4, SERIES 109,BLINDMATE	
MATERIAL SEE CALLOUTS	FINISH SEE CALLOUTS	WEIGHT	SIZE A1	CAGE CODE 00779
CUSTOMER DRAWING		SCALE 4:1	SHEET 1 OF 1	REV N