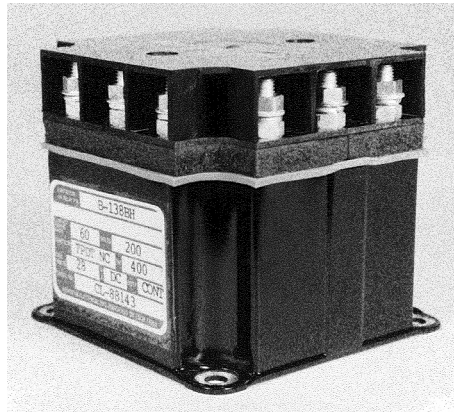


## B-138 Series, Rated up to 60 Amps, 115/200 VAC, 400 Hz

### Product Facts

- TPST NO and TPDT NC
- Gasket sealed or Hermetically sealed
- 115/200 VAC, 400 Hz, 3 phase
- Auxiliary contacts available
- Meets the requirements of MIL-PRF-6106



### Performance Data

#### Electrical Characteristics

##### Contact Arrangement —

TPST NO and TPDT NC

##### Rated Operating Voltage —

115/200 VAC, 400 Hz, 3 phase

##### Current, Resistive — 60 Amps

##### Current, Inductive — 60 Amps

##### Current, Motor — 60 Amps

##### Current, Rupture — 600 Amps

### General Characteristics

#### Temperature Range —

-55°C to +71°C

#### Operating Cycles (Life) at Rated

##### Resistive Load, Min. —

50,000 cycles

#### Operating Cycles (Life)

##### Mechanical, Min. — 100,000 cycles

#### Dielectric Strength —

All Circuits to Ground — 1,500 Vrms

Circuit to Circuit — 1,500 Vrms

Coil to Ground and Aux. Contacts —

1,000 Vrms

Altitude Max. — 50,000 ft.

Weight, Nominal — 1.50 to 2.0 lbs

### Coil Characteristics

**Duty Cycle** — Continuous or continuous with suppression

**Operating Voltage, Nom.** — 28 Vdc

**Pickup Voltage, Max. @ 85°C** —

18 Vdc

**Dropout Voltage, Max.** —

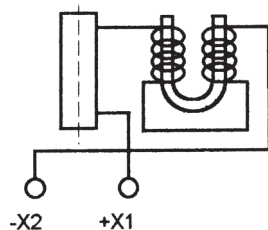
1.5 to 7 Vdc

**Coil Current @ 29 Vdc Max. @**

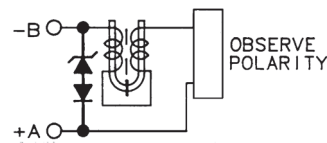
25°C — 0.5 Amps

**Inrush** — 5 Amps

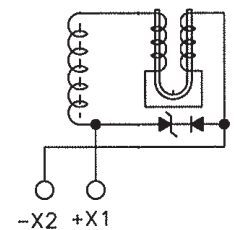
### Coil Type



A — Continuous



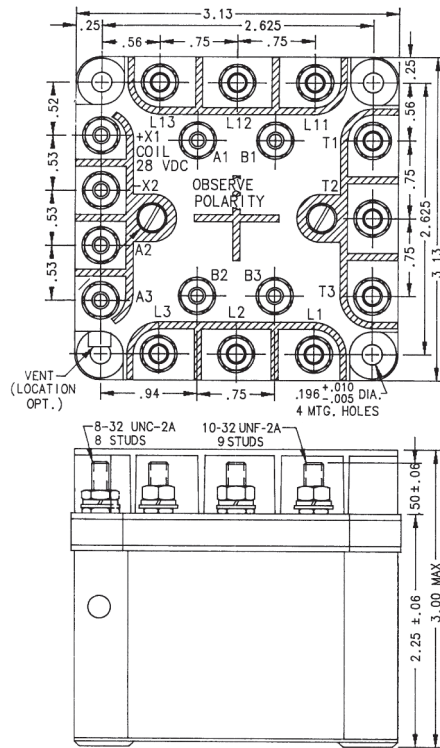
B — Continuous with Suppression



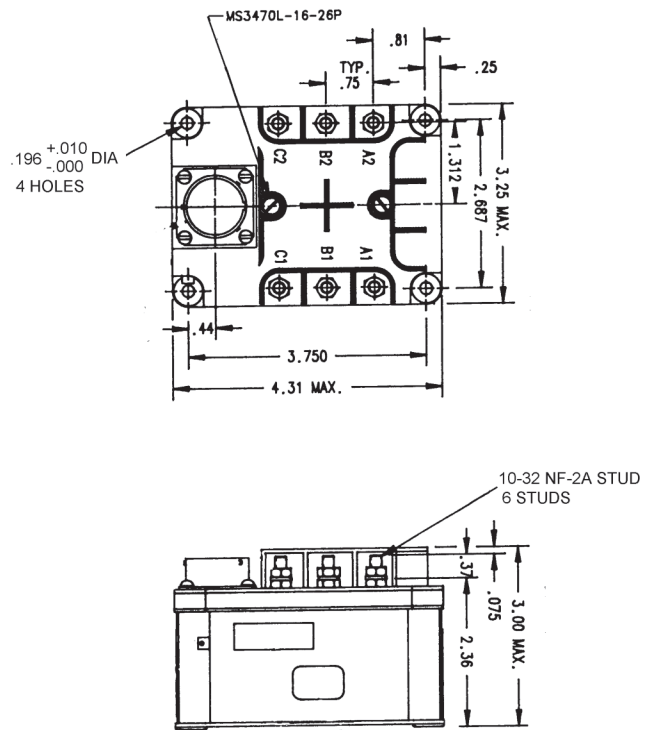
C — Continuous with Suppression

For factory-direct application assistance, phone 419-521-9500 or fax 419-526-2749.

## B-138 Series, Rated up to 60 Amps, 115/200 VAC, 400 Hz (Continued)

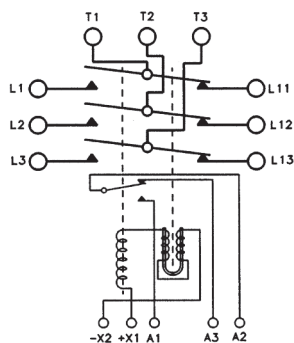


Mounting Style A

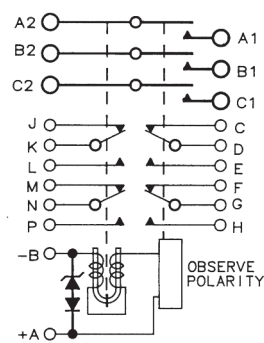


Mounting Style B

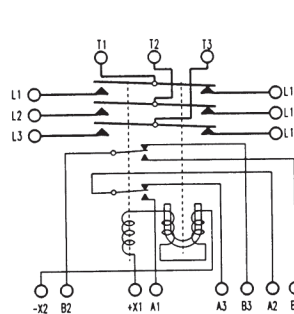
### Circuit Configurations (Consult factory for other available circuit configurations)



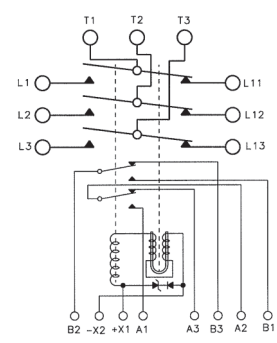
Circuit Configuration 1



Circuit Configuration 2



Circuit Configuration 3



Circuit Configuration 4

HARTMAN Part Number	Construction Type	Mounting Style	Coil Type	Circuit Config.	TE Part Number
B-138S	Gasket/Vented	B	B	2	1616002-5
B-138XEH	Gasket/Vented	A	C	4	1616028-3
B-138BH	Gasket/Vented	A	A	1	1616028-1
B-138XAH	Gasket/Vented	A	A	3	1616028-2

For factory-direct application assistance, phone 419-521-9500 or fax 419-526-2749.