

## KC Series Make & Break Load Switching — 15 kV Relays (Continued)

### KC-2

#### No Load Switching

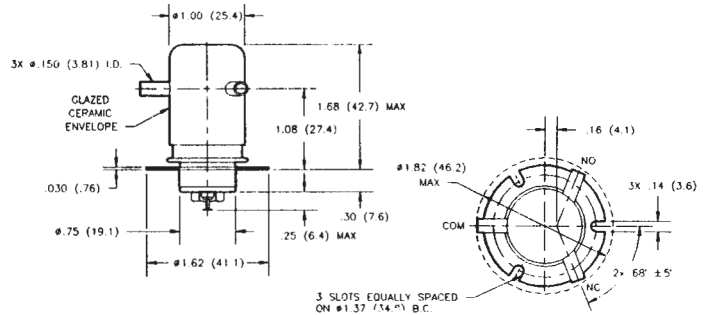
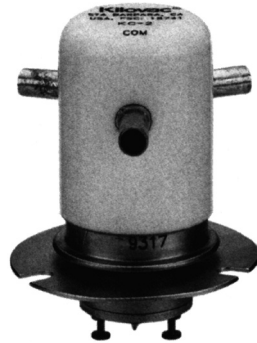
##### Product Facts

- Vacuum dielectric for low and stable contact resistance
- Carries 50 Amps at DC; 10 Amps at 32 MHz
- Not designed for power switching

### KC-8

#### Product Facts for KC-8

- Not recommended for new design. See KC-14 on page 7-82 for replacement.

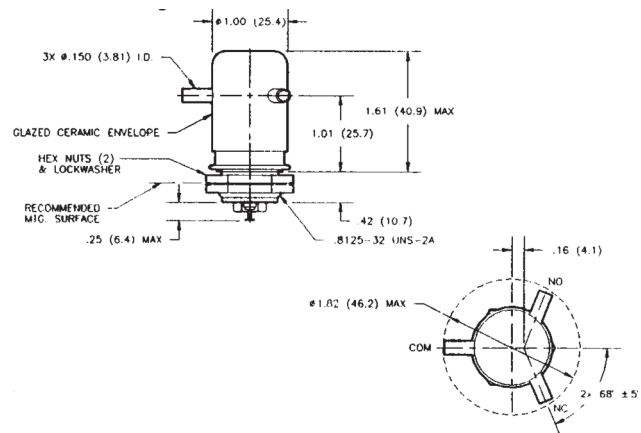
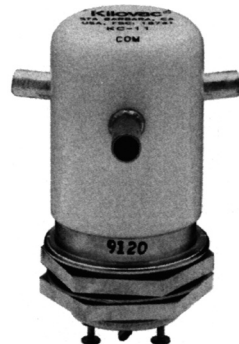


### KC-11

#### No Load Switching

##### Product Facts

- Threaded base version of KC-2
- Vacuum dielectric for low leakage current applications



### KC-12

#### Product Facts

- Not recommended for new design. See KC-18 on page 7-67 for replacement.
- Vacuum dielectric for power switching low current loads

#### Product Specifications for KC-2, KC-8, KC-11 and KC-12

Contact Arrangement — SPDT

Contact Form — C

Test Voltage, DC or 60 Hz (Peak) —

17 kV

Rated Operating Voltage (Peak) —

DC or 60 Hz — 15 kV

2.5 MHz — KC-2 and KC-11 — 12 kV

16 MHz — KC-2 and KC-11 — 9 kV

32 MHz — KC-2 and KC-11 — 7 kV

Continuous Carry Current, Max. —

DC or 60 Hz — KC-2 and KC-11 — 50 A

KC-8 and KC-12 — 30 A

2.5 MHz — KC-2 and KC-11 — 30 A

16 MHz — KC-2 and KC-11 — 17 A

32 MHz — KC-2 and KC-11 — 10 A

Coil Hi-Pot (Vrms, 60 Hz) — 500 A

Contact Capacitance —

Between Open Contacts — 0.5 pF

Open Contacts to Ground — 1 pF

Contact Resistance, Max. —

KC-2 and KC-11 — 0.012 ohm

KC-8 and KC-12 — 0.025 ohm

Operate Time, Max. — 15 ms

Release Time, Max. — 9 ms

Shock, 11ms, 1/2 Sine (Peak) —

50 g

Vibration —

Peak — 10 g (55 to 500 Hz)

Operating Ambient Temperature

Range — -55°C to +125°C

Mechanical Life — 1 million cycles

Weight, Nominal —

85 g (3 oz.)

#### Coil Data

| Nominal Volts DC       | 12 Vdc   | 26.5 Vdc | 115 Vdc  |
|------------------------|----------|----------|----------|
| Pickup, Max.           | 8 Vdc    | 16 Vdc   | 80 Vdc   |
| Dropout                | .5-5 Vdc | 1-10 Vdc | 5-50 Vdc |
| Coil Resistance (±10%) |          |          |          |
| KC-2 and KC-11         | 60 Ω     | 250 Ω    | 3500 Ω   |
| KC-8 and KC-12         | 48 Ω     | 180 Ω    | 2900 Ω   |

Ratings listed are for 25°C, sea level conditions

#### Ordering Information

Sample Part Number ►

Series:

Model:

2

8

11

12

Coil Voltage:

Blank = 26.5 Vdc /12Vdc = 12 Vdc /115Vdc = 115 Vdc

KC- 2 /12Vdc

For factory-direct application assistance, dial 800-253-4560, ext. 2055, or 805-220-2055.