

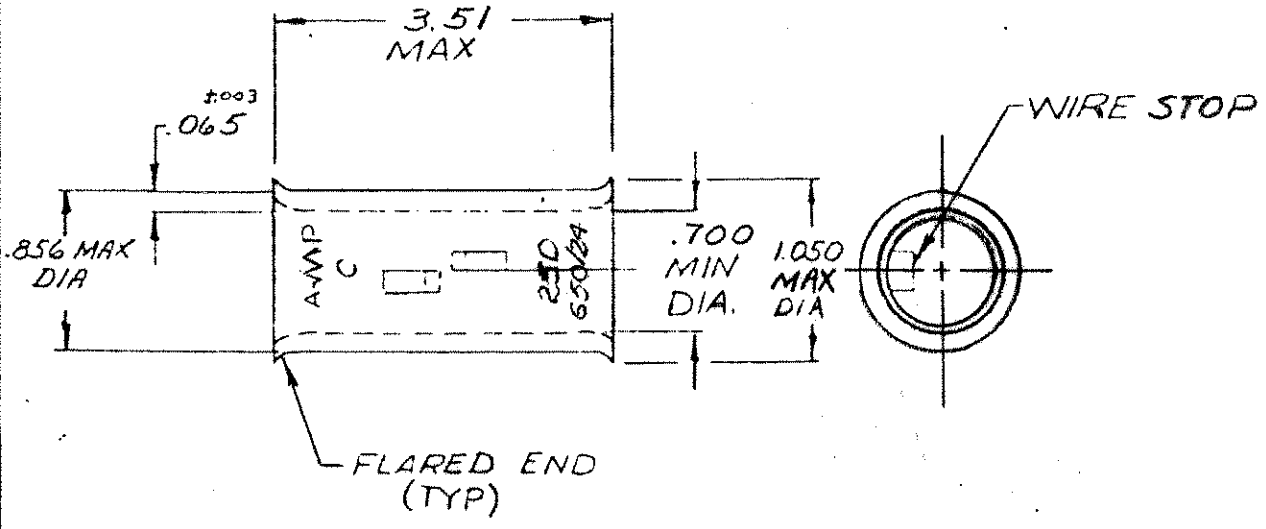
DRAWING MADE IN AMERICAN PROJECTION

LOC 88 (5) PRINT DATE

© 1977 BY AMP INCORPORATED. ALL RIGHTS RESERVED. AMP PRODUCTS TO BE COVERED BY PATENT. NOT TO BE REPRODUCED NOR PUBLISHED WITHOUT WRITTEN PERMISSION OF AMP INCORPORATED.

REVISIONS				
LTN	DESCRIPTION	ATE	APPROVED	
0	NPS 71-0917 EF	2-15-72	<i>[Signature]</i>	
A	ADDED PR STAMPING ECN P-7-63 FJR	12-27-74	<i>[Signature]</i>	
B	OBSOLETE PER G-3171 JT	8/18/88	PMF	
C	REACTIVATE PER G-5673	4/2/91	LO/DKS	
D	REV 10G-10-0030-99	3/10/99	ME/SU	
E	REV PER 063A-0637-01	3/02/02	<i>[Signature]</i>	

53085



UNLESS OTHERWISE SPECIFIED DIMENSIONS ARE IN INCHES - TOLERANCES DECIMALS ANGLES

MATERIAL:
COPPER:
(ASTM B-75)
FINISH:
TIN PLATE:
(ASTM B545)

CONTRACT NO.	— 4 —
DR.	<i>Ch. Fisher</i> 2-14-72
CHK	<i>Em. Ensminger</i> 2-15-72
APPL	<i>Abel</i> 2-16-72
DATE	<i>Ensminger</i> 2-16-72
DSGN APPD	
OTHER APPD	



AMP INCORPORATED
HARTFORD, CONNECTICUT

NAME: WIRE SPLICE		
AMP POWER-BUTT		
WIRE SIZE: 250 MCM		
SIZE: A	CORE IDENT NO.: 00779	NUMBER: 53085
SCALE: N. 3/4	SHEET 1 OF 1	

CUSTOMER