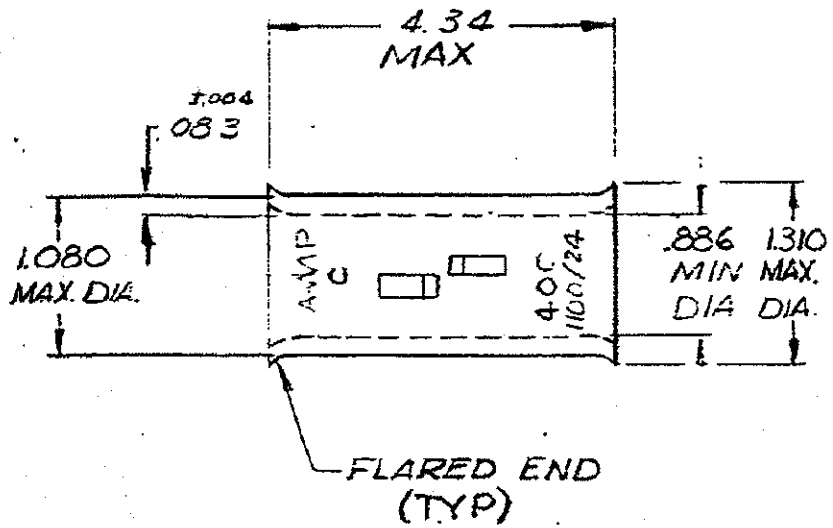


DRAWING MADE IN AMERICAN PROJECTION

LUC PRINT DIST
5: 86

© 1972 BY AMP INCORPORATED
RIGHTS RESERVED. AMP NOT TO BE
COVERED BY PATENTS NOT TO BE
PATENTS UNLESS SPECIFICALLY
REPRODUCED WITHOUT PERMISSION
OF AMP INCORPORATED.

REVISIONS			
REV	DESCRIPTION	DATE	APPROVED
0	NPS 71-0920	8/6 2-14-72	JM
A	ADDED RE STAMPING	P-7366 LE 11/17/74	WJW
B	DELETE PER G-2173	ST 5/18/78	PMF
C	REACTIVATE PER G-5057	2/4/89	PMF/WJV
D	REVISED PER Q63A-0637-01	1/10/02	JL



UNLESS OTHERWISE SPECIFIED DIMENSIONS ARE IN INCHES - TOLERANCES UNLESS OTHERWISE SPECIFIED: DECIMALS ±.002 ANGLES ±5°

MATERIAL: ANNEALED COPPER (ASTM-B-75)
FINISH: TIN PLATE (MIL-T-10727)

CONTRACT NO. _____
 DR. *Henry Bader* 2-14-72
 CRK. *Am Engineering* 2-14-72
 APPL. *Abel* 2-14-72
 REL. *Engineering* 2-14-72
 DSGN APPL. _____
 OTHER APPLD _____

AMP AMP INCORPORATED HARRISBURG, PENNSYLVANIA

NAME: **WIRE SPLICE**
AMPPOWER-BUTT
WIRE SIZE: 400 MCM

SIZE	DOCS IDENT NO.	NUMBER
A	00779	53088

SCALE: NTS SHEET 1 OF 1