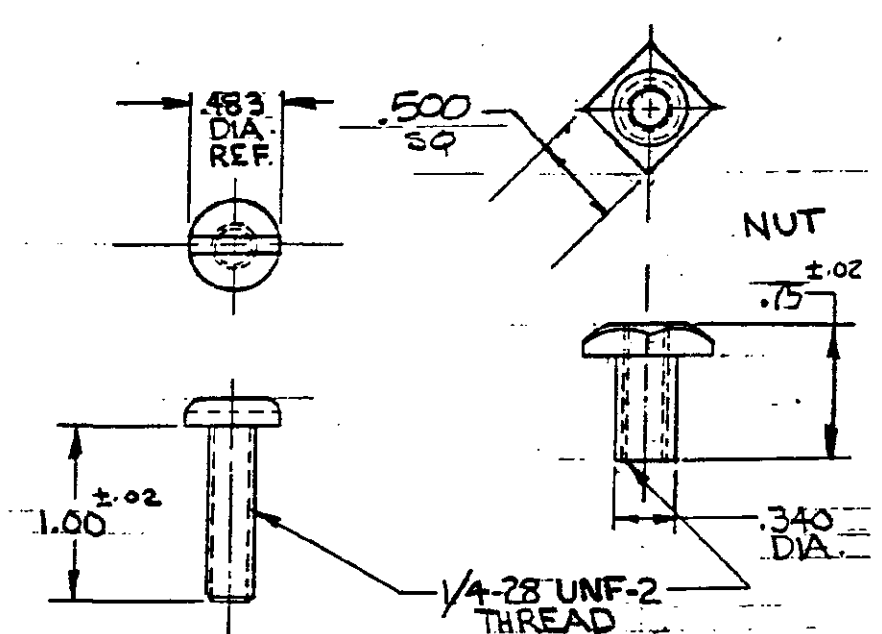
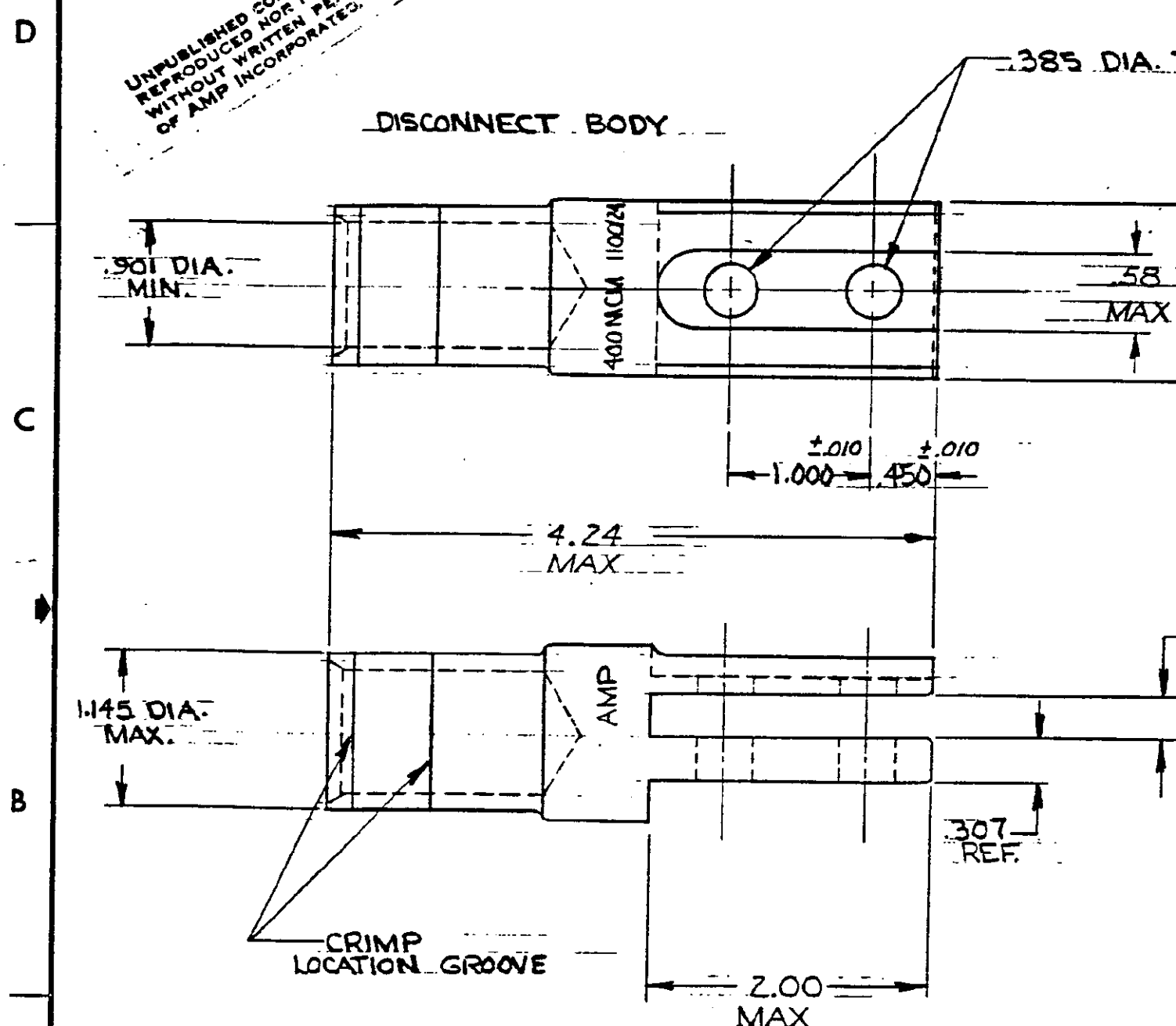


© COPYRIGHT 1975 BY AMP INCORPORATED, HARRISBURG, PA.  
 ALL INTERNATIONAL RIGHTS RESERVED. AMP INCORPORATED PRODUCTS  
 COVERED BY U. S. AND FOREIGN PATENTS AND/OR PATENTS PENDING.

REVISIONS						
P	F	ZONE	LTR	DESCRIPTION	DATE	APPROVED
		0		NPS 74-0542	RCH	10-20-75
		A		REV U-1037	DP	9/24/78
		B		ECN 850727		7-78
		C		ECN 1-12-90		1-90
		D		REV 0720-0856-96		6/96

UNPUBLISHED COPY NO. 10  
 REPRODUCED NOR PUBLISHED  
 WITHOUT WRITTEN PERMISSION  
 OF AMP INCORPORATED.



SCREW,  
 PAN HEAD  
 (ASA B18.6.3-1962)

NOTE:  
 1. ASSEMBLY CONSISTS OF ONE (1)  
 EACH DISCONNECT BODY, SCREW, & NUT

DISCONNECT BODY: BRASS (QQ-B-626)	
NUT: STEEL (QQ-5-631 OR 634) OR BRASS (QQ-B-626)	53661-1
TIN PLATED (MIL-T-10727)	
SCREW: STEEL, TIN PLATED (MIL-T-10727)	
MATERIAL & FINISH	PART NO.

UNLESS OTHERWISE SPECIFIED DIMENSIONS ARE IN INCHES. TOLERANCES ON: DECIMALS ±.008 ANGLES ±5°	CONTRACT NO	AMP INCORPORATED Harrisburg, Pa.
	DR <i>R. Hoffman</i> 10/3/75	
MATERIAL	CHK <i>Abel</i> 10-20-75	NAME
SEE ABOVE	APPD	AMPOWER DISCONNECT - BOLTED
FINISH	APPD	WIRE SIZE: 400 MCM
SEE ABOVE	DSGN APPD <i>R. Hoffman</i> 10/3/75	SIZE
	OTHER APPD <i>Abel</i> 10-20-75	B
		CODE IDENT NO
		00779
		DRAWING NO
		53661
		SCALE
		1:1
		SHEET
		1 of 1