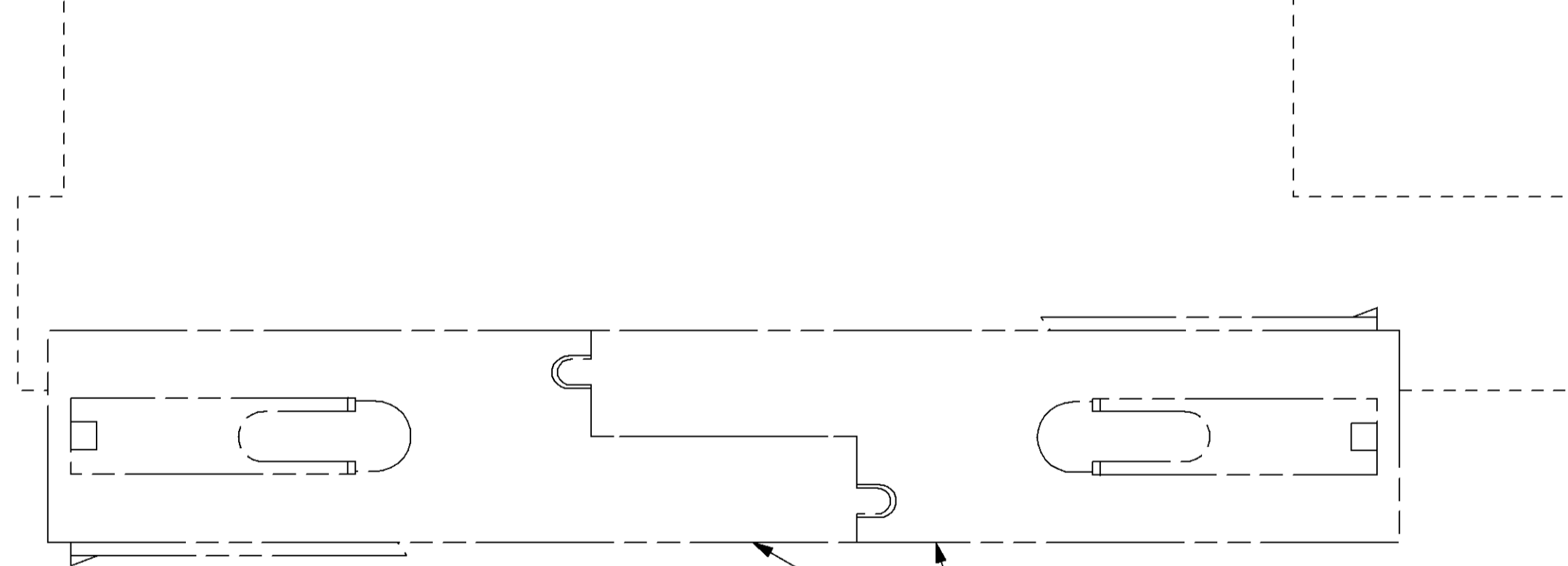
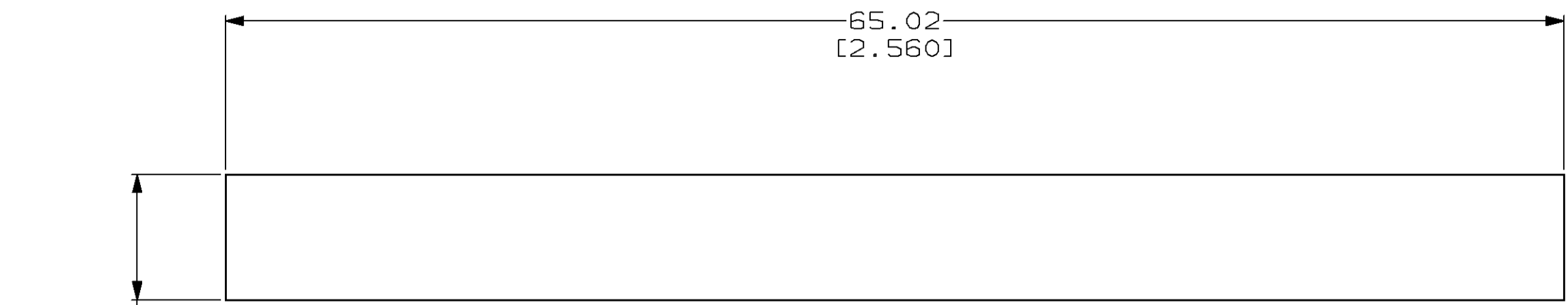


THIS DRAWING IS UNPUBLISHED. RELEASED FOR PUBLICATION  
 BY AMP INCORPORATED. ALL RIGHTS RESERVED.

LOC		DIST		REVISIONS			
P	LTR	DESCRIPTION		DATE	DWN	APVD	
FT	60	B		REDRAWN & REV PER EC 0320-70-97	14 MAR 97	-	-



MATED AND INTERLOCKED HOUSINGS  
REF

- 1. POLYPHENYLENE OXIDE MOLDING COMPOUND, POLYSTYRENE MODIFIED, BLACK. UL FLAME CLASSIFICATION: 94V-1.
- 2. EXTERNAL LOCKING LATCH USED WITH CONNECTORS FOR EXTRA MATED RETENTION FORCE - APPROXIMATELY 100 LB RETENTION PER EXTERNAL LOCKING LATCH.
- 3. ALL DIMENSIONS SHOWN ARE MAXIMUM UNLESS OTHERWISE SPECIFIED.

557640-1  
PART NUMBER

THIS DRAWING IS A CONTROLLED DOCUMENT.		DWN	M. BINNER	14 MAR 97	AMP Incorporated Harrisburg, PA 17105-3608
DIMENSIONS:		CHK	R. STONE	14 MAR 97	
mm [INCHES]		APVD	M. McALONIS	17 MAR 97	
TOLERANCES UNLESS OTHERWISE SPECIFIED: 0 PLC ±- 1 PLC ±- 2 PLC ±- 3 PLC ±- 4 PLC ±- ANGLES ±- FINISH -		NAME		PRODUCT SPEC	
				108-1373	LATCH, EXTERNAL LOCKING, WTW, AMP INNERGY™
MATERIAL		APPLICATION SPEC		114-6051	
		WEIGHT		-	SIZE
CUSTOMER DRAWING		SCALE		4:1	CAGE CODE
		SHEET		1 OF 1	DRAWING NO
		REV		B	RESTRICTED TO
					A2 00779 C-557640

557640