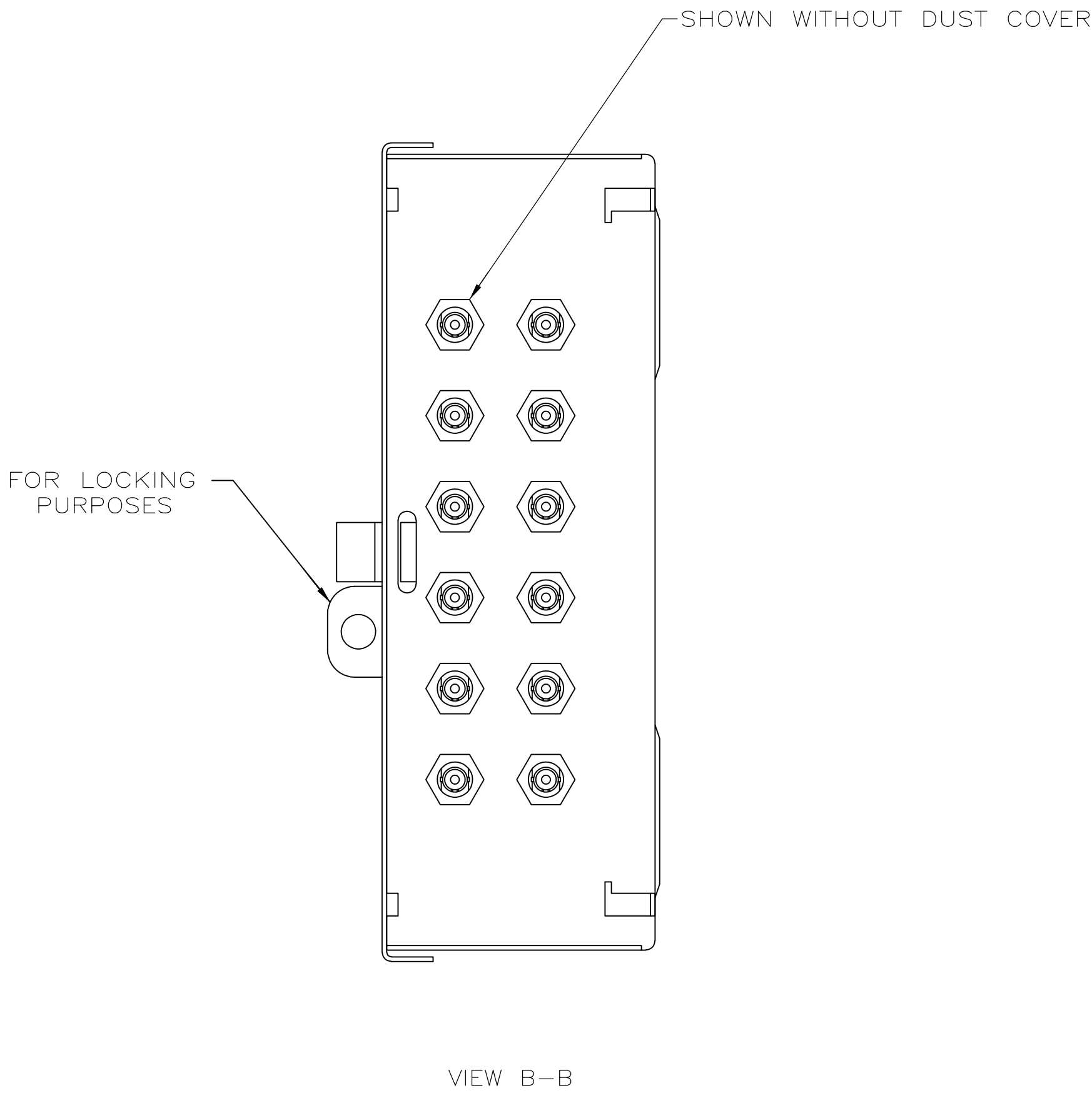
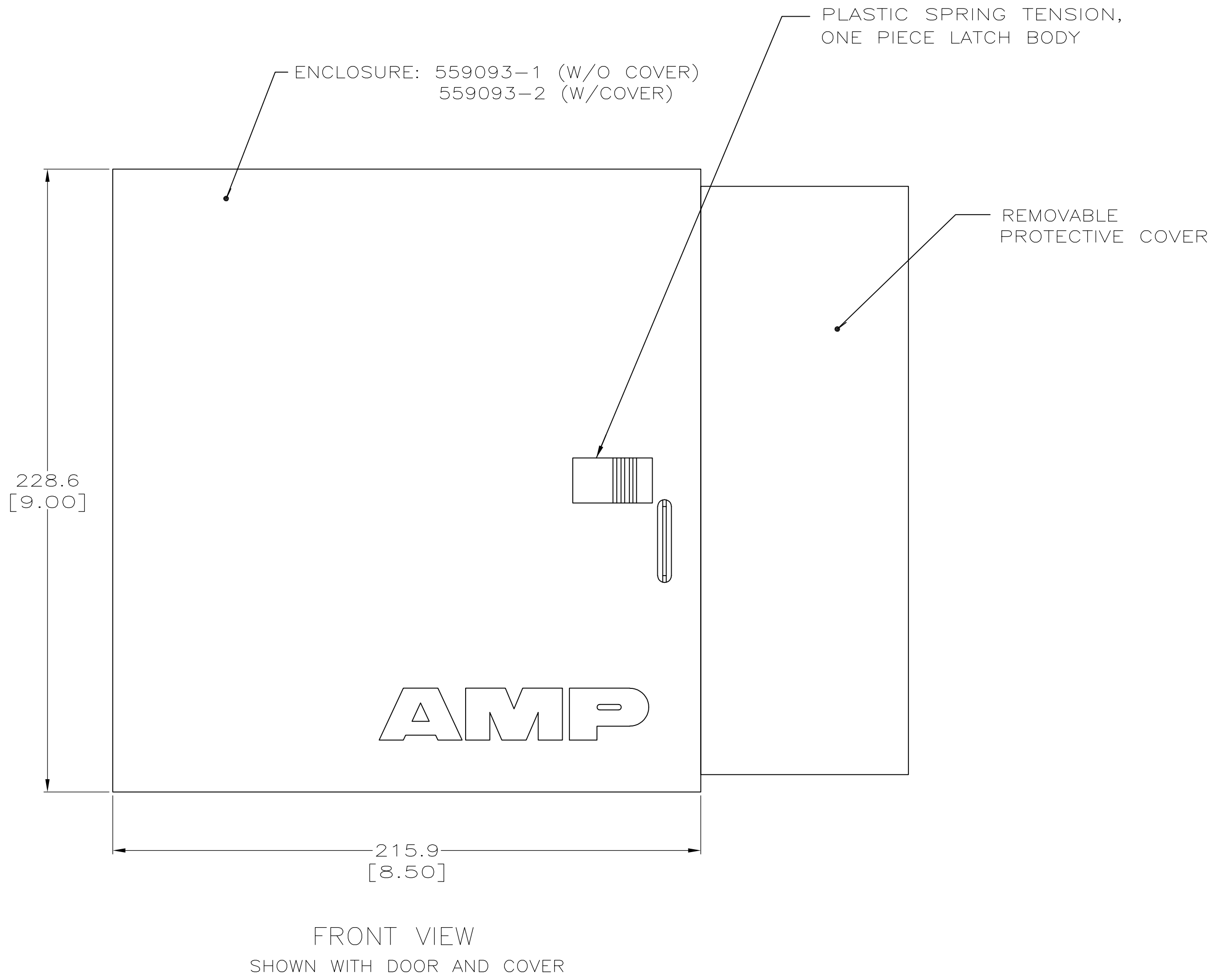
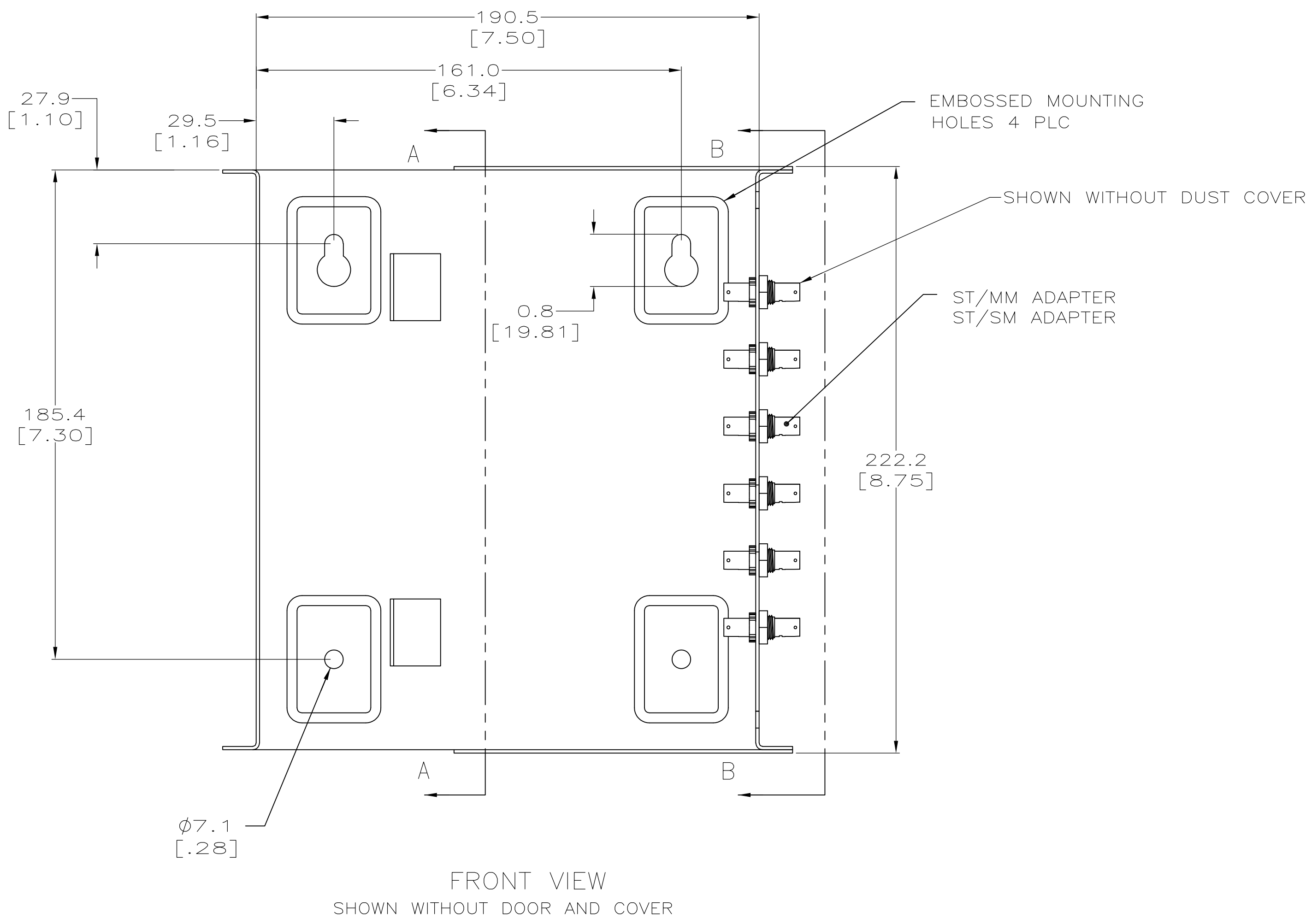
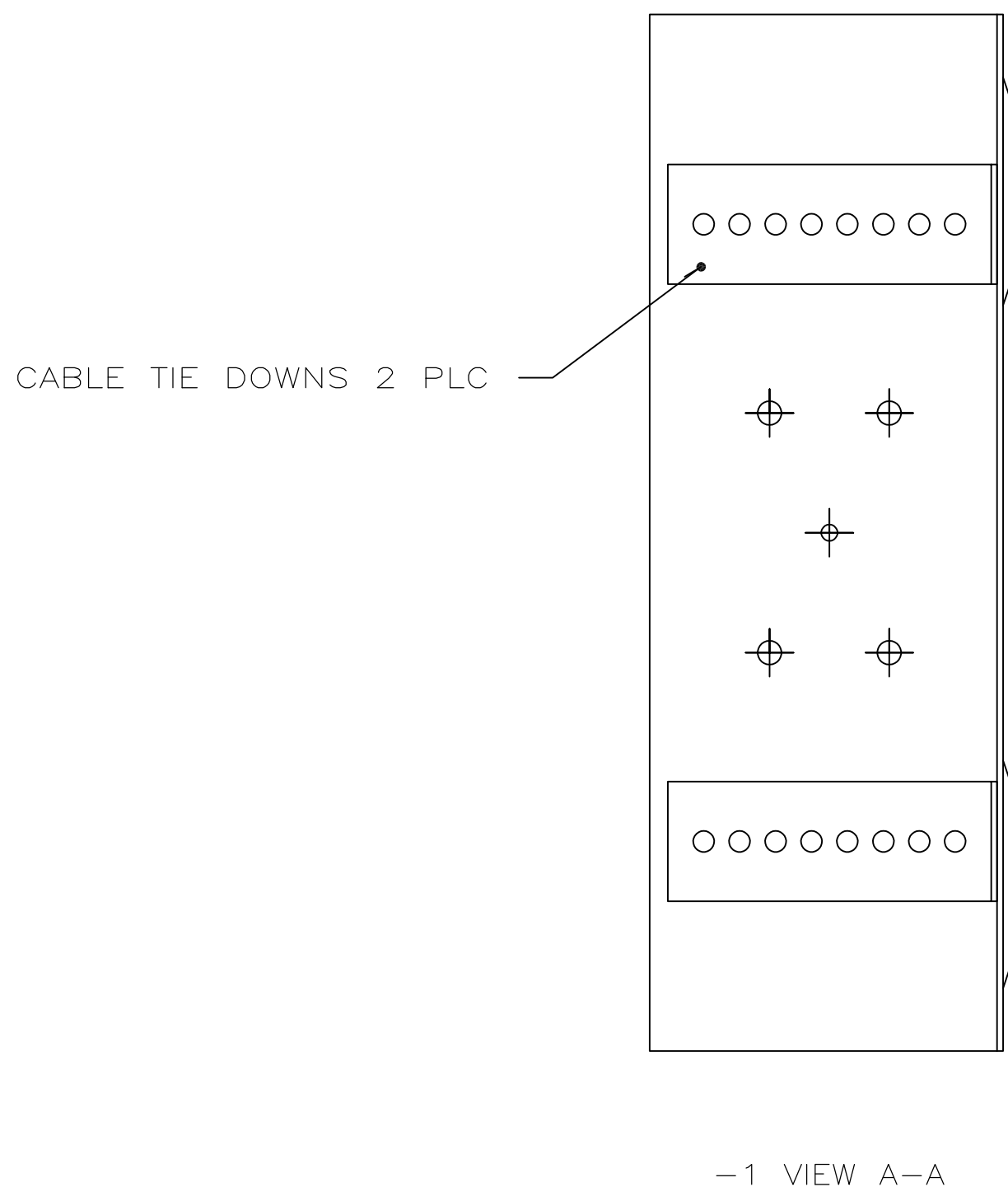
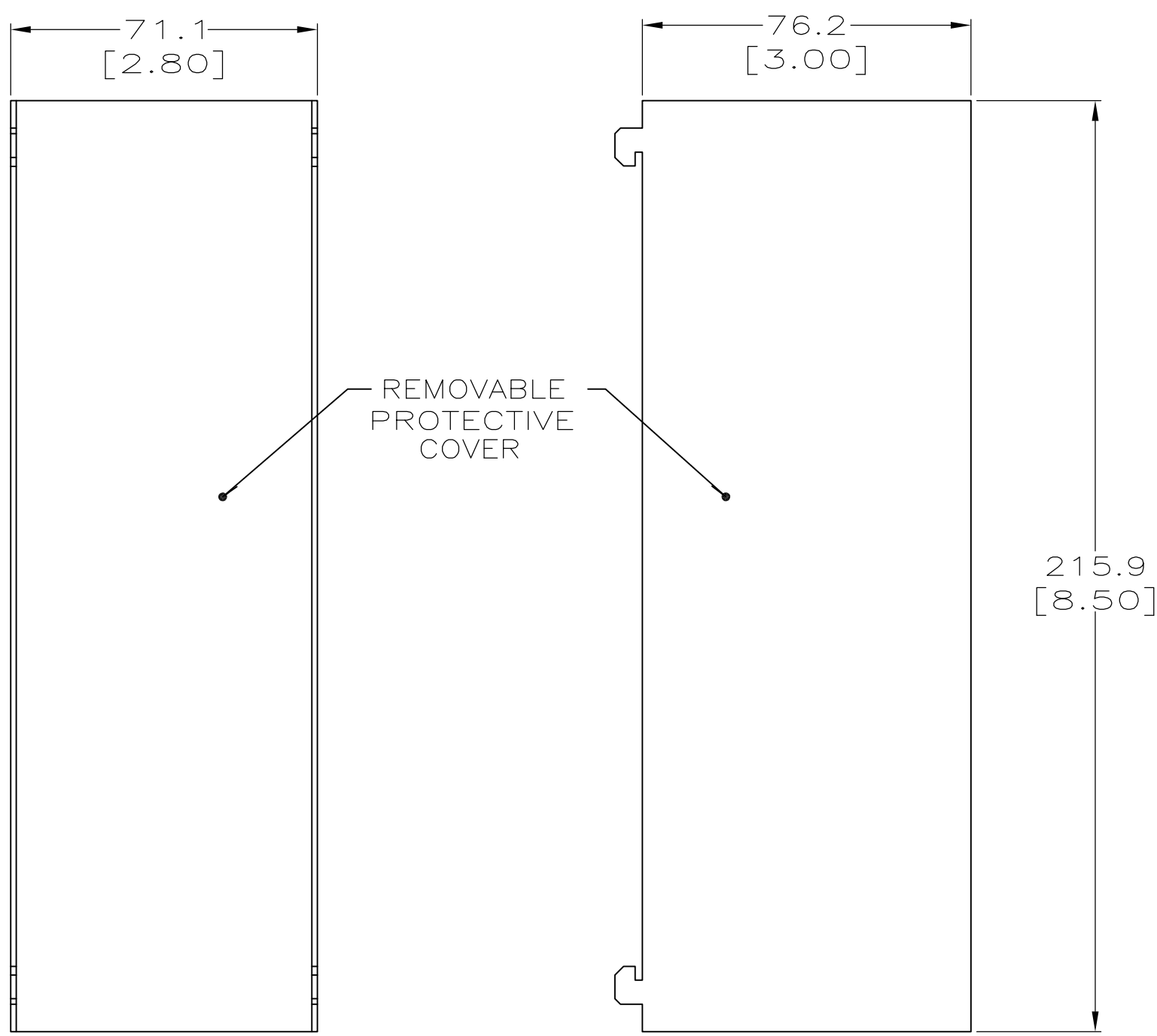
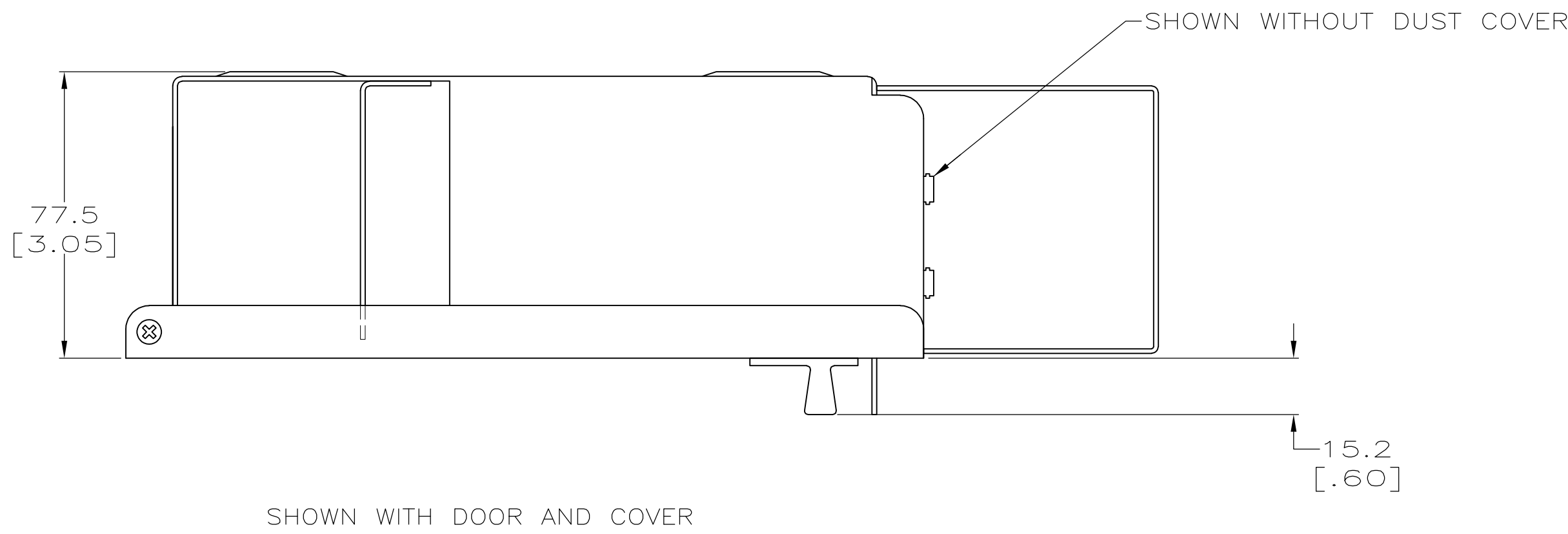


LOC		DIST		REVISIONS			
P	L	N	R	DESCRIPTION		DATE	BY
							APP'D
D				ECO-13-016084		15OCT2015	JM TE



OBSELETE	MULTIMODE	LIGHT ALMOND	WITH PROTECTIVE COVER	559094-6	
	MULTIMODE	LIGHT ALMOND	WITHOUT PROTECTIVE COVER	559094-5	
	OBSELETE	SINGLEMODE	BLACK ANODIZED	WITH PROTECTIVE COVER	559094-4
	OBSELETE	SINGLEMODE	BLACK ANODIZED	WITHOUT PROTECTIVE COVER	559094-3
	OBSELETE	MULTIMODE	BLACK ANODIZED	WITH PROTECTIVE COVER	559094-2
OBSELETE	MULTIMODE	BLACK ANODIZED	WITHOUT PROTECTIVE COVER	559094-1	
COUPLING BUSHING			FINISH	DECRYPTION	PART NO.
IF THERE IS A CHANGE IN THE MANUFACTURING PROCESS, THE MANUFACTURER SHOULD BE ADVISED FOR THE LATEST DESIGN.					
DIMENSIONS:					
TOLERANCES UNLESS OTHERWISE SPECIFIED:					
D P/LC ±.005 (±.02)					
D P/LC ±0.25 (.010)					
D P/LC ±.005 (±.02)					
D P/LC ±0.25 (.010)					
D P/LC ±.005 (±.02)					
D P/LC ±0.25 (.010)					
D P/LC ±.005 (±.02)					
D P/LC ±0.25 (.010)					
D P/LC ±.005 (±.02)					
D P/LC ±0.25 (.010)					
D P/LC ±.005 (±.02)					
D P/LC ±0.25 (.010)					
D P/LC ±.005 (±.02)					
D P/LC ±0.25 (.010)					
D P/LC ±.005 (±.02)					
D P/LC ±0.25 (.010)					
D P/LC ±.005 (±.02)					
D P/LC ±0.25 (.010)					
D P/LC ±.005 (±.02)					
D P/LC ±0.25 (.010)					
D P/LC ±.005 (±.02)					
D P/LC ±0.25 (.010)					
D P/LC ±.005 (±.02)					
D P/LC ±0.25 (.010)					
D P/LC ±.005 (±.02)					
D P/LC ±0.25 (.010)					
D P/LC ±.005 (±.02)					
D P/LC ±0.25 (.010)					
D P/LC ±.005 (±.02)					
D P/LC ±0.25 (.010)					
D P/LC ±.005 (±.02)					
D P/LC ±0.25 (.010)					
D P/LC ±.005 (±.02)					
D P/LC ±0.25 (.010)					
D P/LC ±.005 (±.02)					
D P/LC ±0.25 (.010)					
D P/LC ±.005 (±.02)					
D P/LC ±0.25 (.010)					
D P/LC ±.005 (±.02)					
D P/LC ±0.25 (.010)					
D P/LC ±.005 (±.02)					
D P/LC ±0.25 (.010)					
D P/LC ±.005 (±.02)					
D P/LC ±0.25 (.010)					
D P/LC ±.005 (±.02)					
D P/LC ±0.25 (.010)					
D P/LC ±.005 (±.02)					
D P/LC ±0.25 (.010)					
D P/LC ±.005 (±.02)					
D P/LC ±0.25 (.010)					
D P/LC ±.005 (±.02)					
D P/LC ±0.25 (.010)					
D P/LC ±.005 (±.02)					
D P/LC ±0.25 (.010)					
D P/LC ±.005 (±.02)					
D P/LC ±0.25 (.010)					
D P/LC ±.005 (±.02)					
D P/LC ±0.25 (.010)					
D P/LC ±.005 (±.02)					
D P/LC ±0.25 (.010)					
D P/LC ±.005 (±.02)					
D P/LC ±0.25 (.010)					
D P/LC ±.005 (±.02)					
D P/LC ±0.25 (.010)					
D P/LC ±.005 (±.02)					
D P/LC ±0.25 (.010)					
D P/LC ±.005 (±.02)					
D P/LC ±0.25 (.010)					
D P/LC ±.005 (±.02)					
D P/LC ±0.25 (.010)					
D P/LC ±.005 (±.02)					
D P/LC ±0.25 (.010)					
D P/LC ±.005 (±.02)					
D P/LC ±0.25 (.010)					
D P/LC ±.005 (±.02)					
D P/LC ±0.25 (.010)					
D P/LC ±.005 (±.02)					
D P/LC ±0.25 (.010)					
D P/LC ±.005 (±.02)					
D P/LC ±0.25 (.010)					
D P/LC ±.005 (±.02)					
D P/LC ±0.25 (.010)					
D P/LC ±.005 (±.02)					
D P/LC ±0.25 (.010)					
D P/LC ±.005 (±.02)					
D P/LC ±0.25 (.010)					
D P/LC ±.005 (±.02)					
D P/LC ±0.25 (.010)					
D P/LC ±.005 (±.02)					
D P/LC ±0.25 (.010)					
D P/LC ±.005 (±.02)					
D P/LC ±0.25 (.010)					
D P/LC ±.005 (±.02)					
D P/LC ±0.25 (.010)					
D P/LC ±.005 (±.02)					
D P/LC ±0.25 (.010)					
D P/LC ±.005 (±.02)					
D P/LC ±0.25 (.010)					
D P/LC ±.005 (±.02)					
D P/LC ±0.25 (.010)					
D P/LC ±.005 (±.02)					
D P/LC ±0.25 (.010)					
D P/LC ±.005 (±.02)					
D P/LC ±0.25 (.010)					
D P/LC ±.005 (±.02)					
D P/LC ±0.25 (.010)					
D P/LC ±.005 (±.02)					
D P/LC ±0.25 (.010)					
D P/LC ±.005 (±.02)					
D P/LC ±0.25 (.010)					
D P/LC ±.005 (±.02)					
D P/LC ±0.25 (.010)					
D P/LC ±.005 (±.02)					
D P/LC ±0.25 (.010)					
D P/LC ±.005 (±.02)					
D P/LC ±0.25 (.010)					
D P/LC ±.005 (±.02)					
D P/LC ±0.25 (.010)					
D P/LC ±.005 (±.02)					
D P/LC ±0.25 (.010)					
D P/LC ±.005 (±.02)					
D P/LC ±0.25 (.010)					
D P/LC ±.005 (±.02)					
D P/LC ±0.25 (.010)					
D P/LC ±.005 (±.02)					
D P/LC ±0.25 (.010)					
D P/LC ±.005 (±.02)					
D P/LC ±0.25 (.010)					
D P/LC ±.005 (±.02)					
D P/LC ±0.25 (.010)					
D P/LC ±.005 (±.02)					
D P/LC ±0.25 (.010)					
D P/LC ±.005 (±.02)					
D P/LC ±0.25 (.010)					
D P/LC ±.005 (±.02)					
D P/LC ±0.25 (.010)					
D P/LC ±.005 (±.02)					
D P/LC ±0.25 (.010)					
D P/LC ±.005 (±.02)					
D P/LC ±0.25 (.010)					
D P/LC ±.005 (±.02)					
D P/LC ±0.25 (.010)					
D P/LC ±.005 (±.02)					
D P/LC ±0.25 (.010)					
D P/LC ±.005 (±.02)					
D P/LC ±0.25 (.010)					
D P/LC ±.005 (±.02)					
D P/LC ±0.25 (.010)					
D P/LC ±.005 (±.02)					
D P/LC ±0.25 (.010)					
D P/LC ±.005 (±.02)					
D P/LC ±0.25 (.010)					
D P/LC ±.005 (±.02)					
D P/LC ±0.25 (.010)					
D P/LC ±.005 (±.02)					
D P/LC ±0.25 (.010)					
D P/LC ±.005 (±.02)					
D P/LC ±0.25 (.010)					
D P/LC ±.005 (±.02)					
D P/L					

