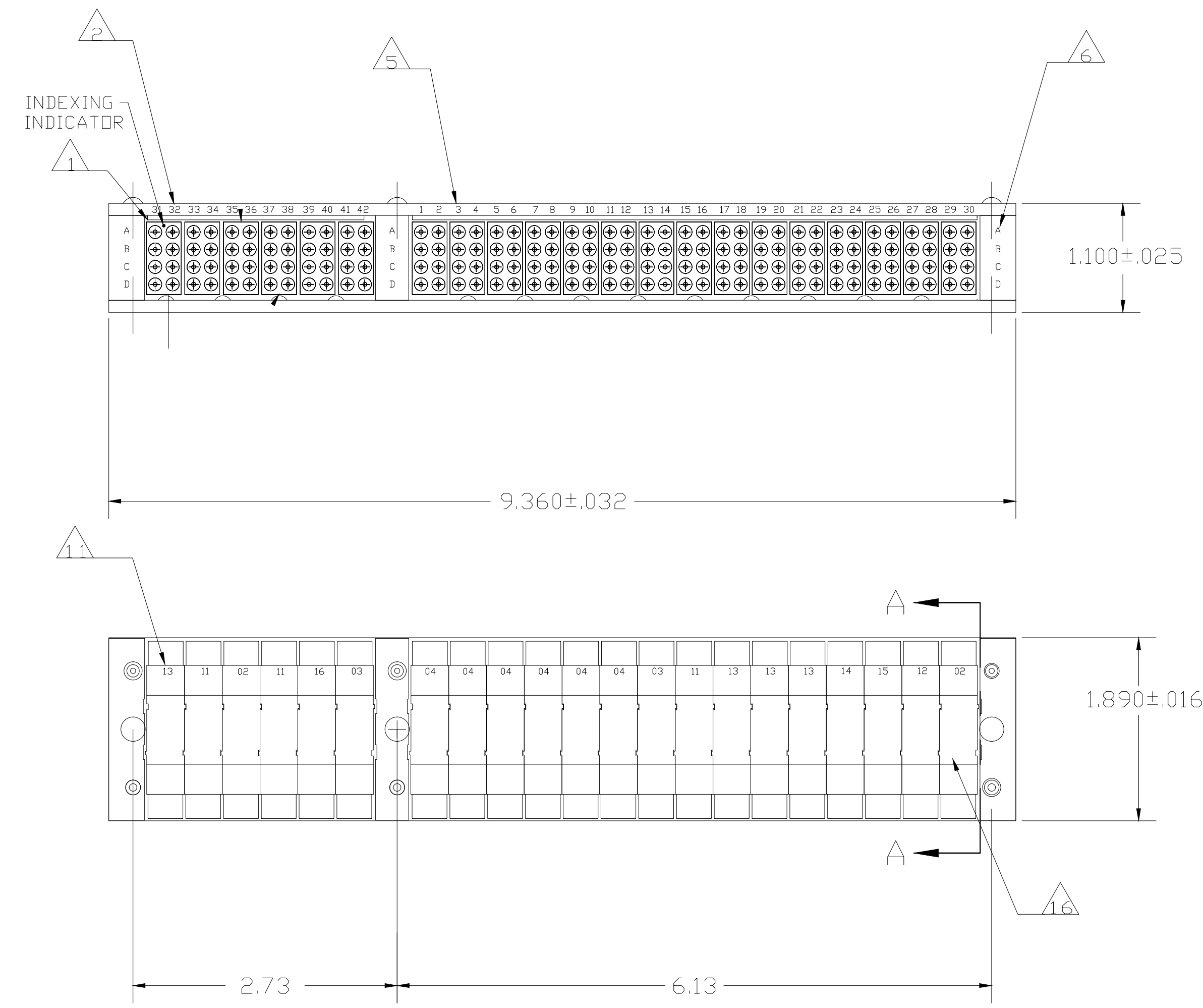
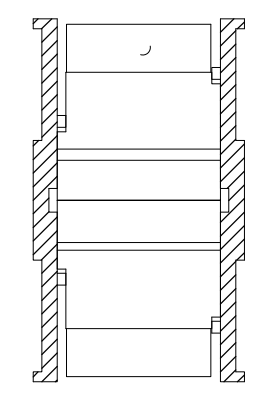


THIS DRAWING IS UNPUBLISHED.	RELEASED FOR PUBLICATION	9-00, 9-16-00
DESCRIPTION	AMP PART NO.	MIL PART NO.
CONTACT	1-592404-1	M39029/1-102
SEALING PLUG	592104-2	MS27488-16
INS/EXT TOOL	592155-1	M81969/14-03

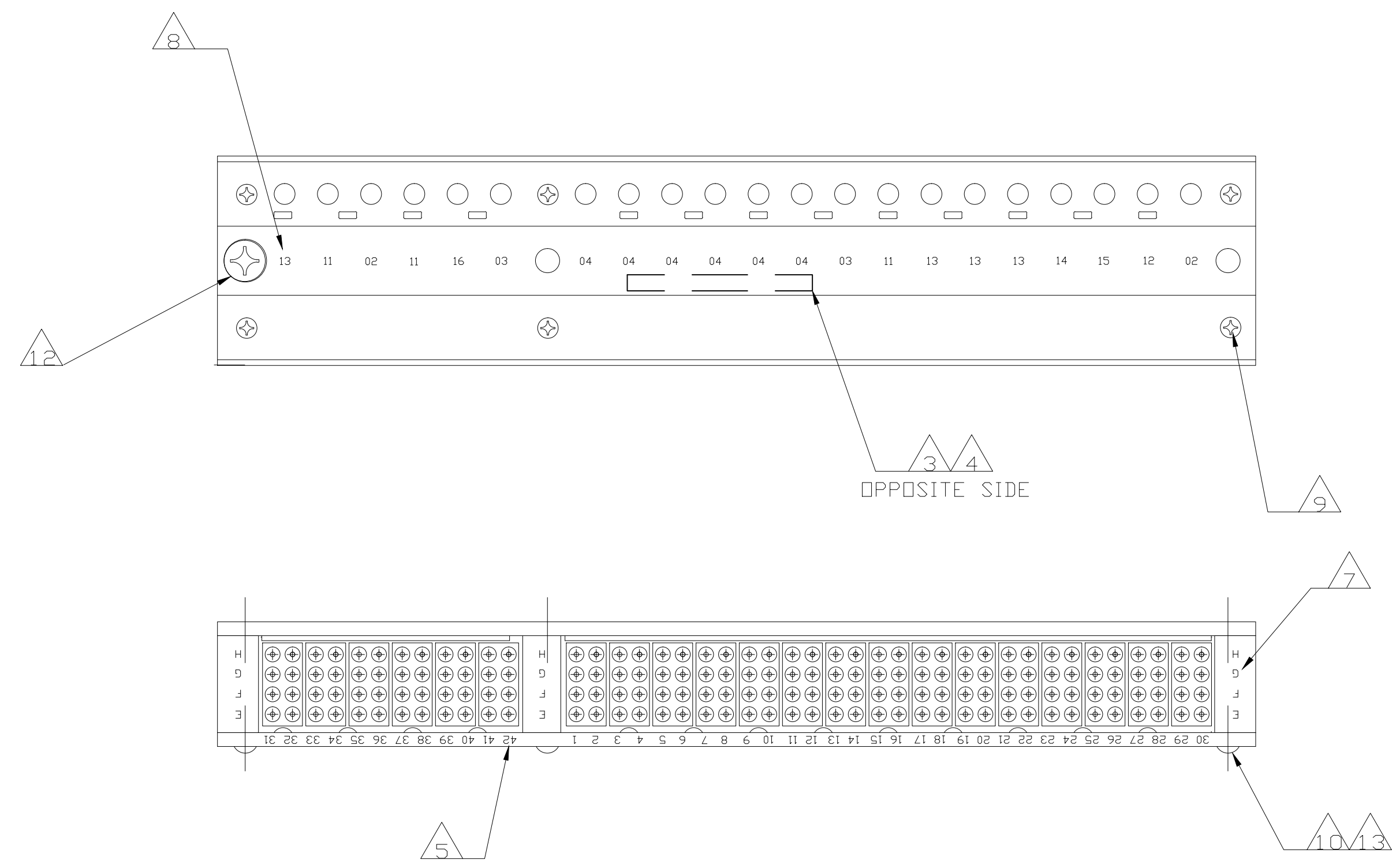
LOC	DIST	REV	DESCRIPTION	DATE	DWN	APVD
DF	AO	C	REVISED PER ECO-14-013776	10NDV14	MGM	CT



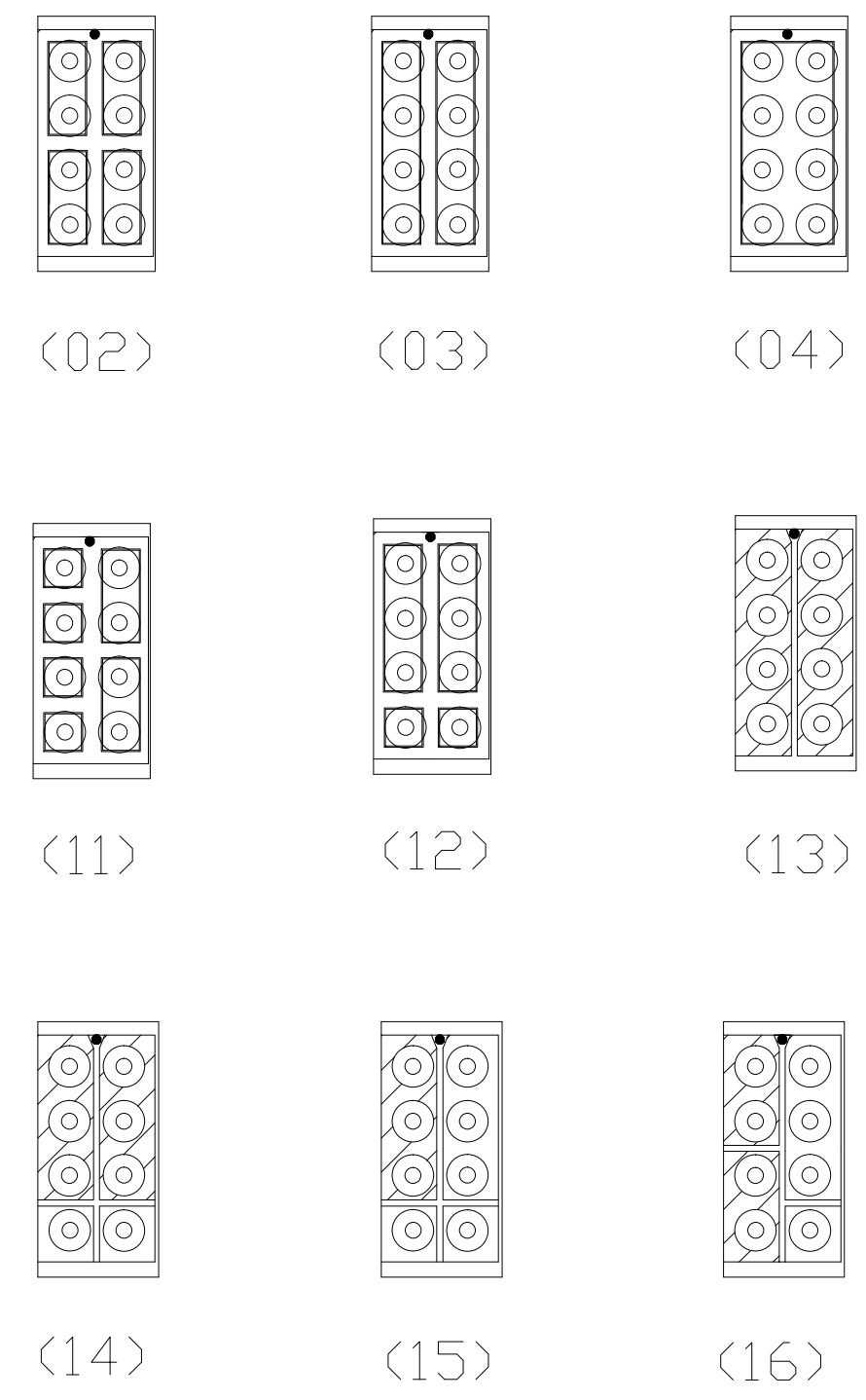
- 1 MODULE ASSEMBLIES ORIENTATED AS SHOWN FROM LOCATION NO. 31 ON RAIL ASSEMBLY.
- 2 MARK MODULE BLOCK WITH APPROPRIATE BUSSING ARRANGEMENT.
- 3 MARK CUSTOMER PART NO. 97437-121-01A. (-2 ONLY)
- 4 MARK "AMP", AMP PART NO. AND DATE CODE.
- 5 MARK TOP AND BOTTOM OF RAIL ASSEMBLY WITH ZONE IDENTIFICATION AS SHOWN.
- 6 MARK TOP OF END BLOCKS AND TIE BLOCK WITH "ABCD" AT LOCATION SHOWN.
- 7 MARK BOTTOM OF END BLOCKS AND TIE BLOCK WITH "EFGH" AT LOCATION SHOWN.
- 8 MARK LEFT SIDE RAIL WITH BUSSING IDENTIFICATION AS SHOWN.
- 9 REF. FLAT HEADED SCREWS MS51959-4.
- 10 REF. PAN HEADED SCREWS MS35206-203.
- 11 MARK EACH APPLICABLE MODULE ASSEMBLY WITH BUSSING ARRANGEMENT NUMBER IN APPROXIMATE AREA SHOWN.
- 12 REF. FLATHEAD SCREW MS51959-6 2
- 13 LOCK WASHER MS35338-039.
- 14. ROLLS-ROYCE QUALITY SPECIFICATION CQC-103 IS INVOKED FOR THIS PART NUMBER.
- 15 CONTACTS, SEALING PLUGS AND INS/EXT TOOL ARE NOT SUPPLIED, SEE TABLE FOR PART NUMBERS.
- 16 HOUSING MATERIAL: GLASS FILLED EPOXY THERMOSET. COLOR: BLACK ALL MODULES.



SECTION A - A



RAIL REMOVED FOR CLARITY



BUSSING ARRANGEMENT

RoHS COMPLIANT PART	(13) (11) (02) (11) (16) (03) TIE BLDCK (04) (04) (04) (04) (04) (04) (03) (11) (13) (13) (14) (15) (12) (02)	5-591642-2
SUPERCEDED BY 591642-2	(13) (11) (02) (11) (16) (03) TIE BLDCK (04) (04) (04) (04) (04) (03) (11) (13) (13) (13) (14) (15) (12) (02)	591642-2
REMARKS	BUSSING ARRANGEMENT	PART NO

THIS DRAWING IS A CONTROLLED DOCUMENT.		DWN C. C. THOMAS 19SEP00	TE Connectivity
DIMENSIONS: INCHES		CHK D. MILLER 9-16-00	
TOLERANCES UNLESS OTHERWISE SPECIFIED:		APVD D. MILLER 9-15-00	NAME
0 PLC ± -	1 PLC ± -	PRODUCT SPEC	FEED-THRU FRAME ASSY, SIZE 16, TJ
2 PLC ± .02	3 PLC ± .005	APPLICATION SPEC	
4 PLC ± -	ANGLES ± -	SIZE CAGE CODE DRAWING NO	RESTRICTED TO
MATERIAL	FINISH	WEIGHT	A1 00779 C=591642
CUSTOMER DRAWING		SCALE 1:1	SHEET 1 OF 1 REV C