

4

3

2

1

THIS DRAWING IS UNPUBLISHED.

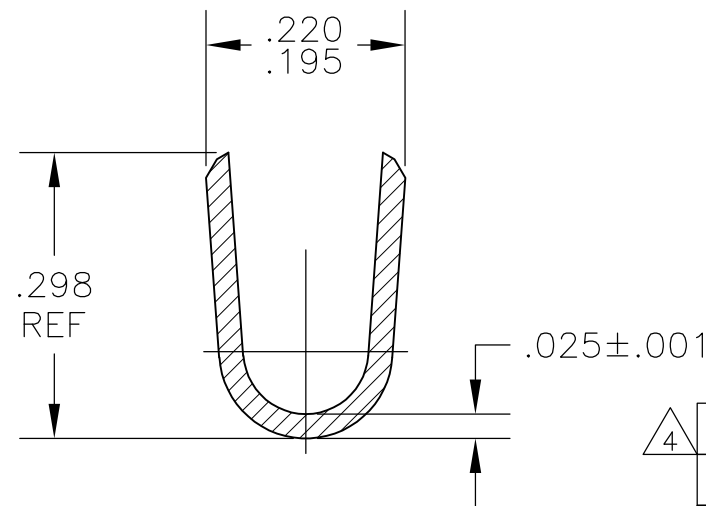
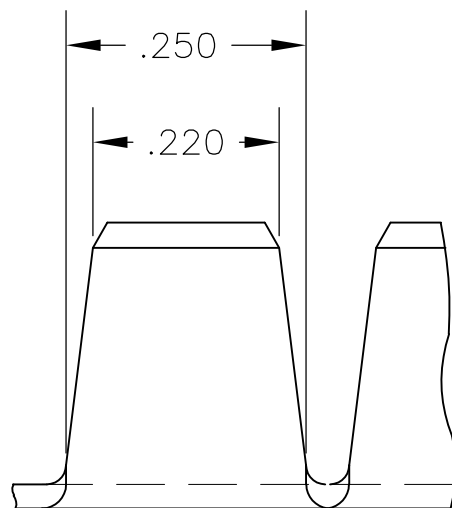
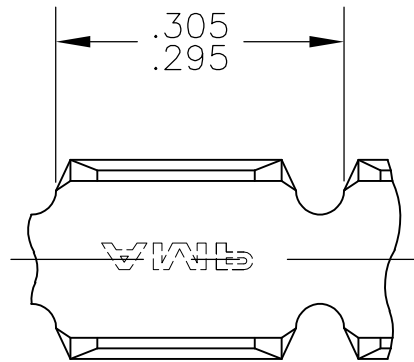
RELEASED FOR PUBLICATION

© COPYRIGHT BY TYCO ELECTRONICS CORPORATION.

ALL RIGHTS RESERVED.

LOC	DIST	REVISIONS					
		P	LTR	DESCRIPTION	DATE	DWN	APVD
AF	50		P1	ECR-07-001426(REDRAWN IN AUTOCAD)	13DEC06	HMR	GP
			P2	REVISED PER ECO-09-021826	07SEP09	KK	AEG

- 1 CONTINUOUS STRIP ON REELS.
- 2 WIRE RANGE: 12,000 TO 18,000 CMA
- △3 FOREIGN PRODUCTION ONLY.
- △4 OBSOLETE PARTS: OBSOLETE CIS STREAMLINING PER D.RENAUD/D.SINISI



△4	OBSOLETE	NONE	TEMPER A ST. STEEL	60997-5
	OBSOLETE	.000080 MIN TIN	TEMPER 3 C.R. STEEL	60997-4
△4	OBSOLETE	.000150 MIN NICKEL	TEMPER 3 C.R. STEEL	60997-3
△3	OBSOLETE	.000080 MIN TIN	082 BRASS	60997-2
		NONE	082 BRASS	60997-1
		FINISH	MATERIAL	PART NO

DIMENSIONS: INCHES		TOLERANCES UNLESS OTHERWISE SPECIFIED:		DWN		CHK		APVD		PRODUCT SPEC		APPLICATION SPEC		WEIGHT		SIZE		CAGE CODE		DRAWING NO		RESTRICTED TO	
		0 PLC ± -		DWN RAGHAVENDRA 13DEC06		CHK G.D.PORTA 04JAN07		APVD G.D.PORTA 04JAN07		PRODUCT SPEC		APPLICATION SPEC		WEIGHT -		SIZE A3		CAGE CODE 00779		DRAWING NO C-60997		RESTRICTED TO -	
		1 PLC ± -		THIS DRAWING IS A CONTROLLED DOCUMENT.		Tyco Electronics Corporation		NAME		SPLICE						SCALE 5:1		SHEET 1 OF 1		REV P2			
		2 PLC ± -				Harrisburg, Pa 17105-3608																	
		3 PLC ± .010																					
		4 PLC ± -																					
		ANGLES ± -																					
MATERIAL SEE TABLE		FINISH SEE TABLE																					