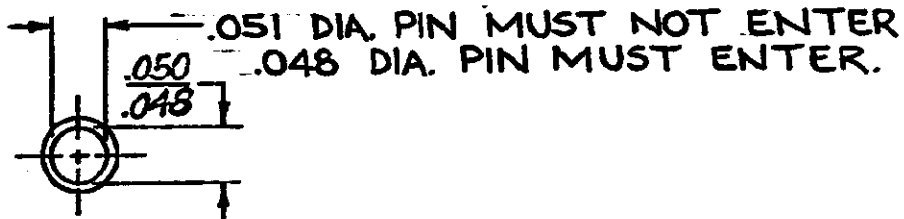
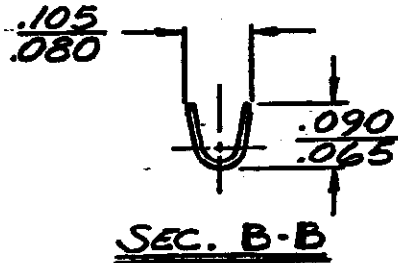
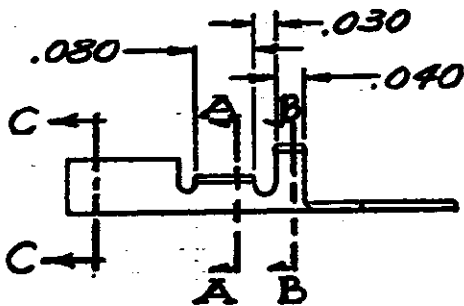
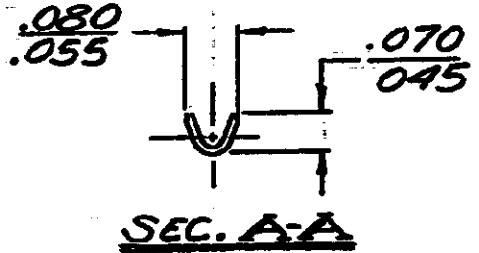
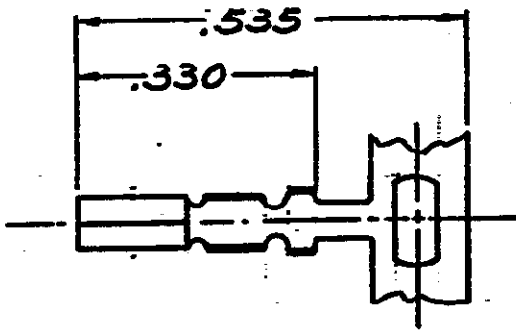


DRAWING MADE IN AMERICAN PROJECTION

NUMBER 61547



DIMENSIONS IN INCHES. DO NOT SCALE PRINT.

<del>.008 PHOS. BRZ. - GOLD</del>	<del>61547-4</del>
<del>.008 PHOS. BRZ. - PRETIN</del>	<del>61547-2</del>
<del>.008 BRASS - PRETIN</del>	<del>61547-1</del>
<b>MAT'L &amp; FINISH</b>	<b>PART. NO.</b>

J	OBS-1 0304-93	BY	9/7/63
H	ADDED NOTE PER A-47	BY	8-22
G	OBS. -4 A 4515	BY	2-5-60
F	ADDED -4	TTI	5/6 12/72
E	REVISED	A-47	1/52
D	REVISED WIRE RANGE	A	8/5/62
C	CHANGED DIST.	A-47	7-20-71
B	ADDED -2	6360	3/2/70
A	REMOVED HAND STAMP RELEASED	M-1427	1/2/69
TR	REVISION RECORD	ECN	DATE

©1969 BY AMP INCORPORATED, ALL RIGHTS RESERVED. AMP PRODUCTS COVERED BY PATENTS AND/OR PATENTS PENDING.

**CUSTOMER COPY REFERENCE ONLY**

MATERIAL AND FINISH  
**SEE TABLE**



AMP INCORPORATED  
HARRISBURG, PENNSA.

WIRE RANGE INSULATION  
#32-#20 .060 MAX

CLASS	---
TYPE	---

TOLERANCE EXCEPT AS NOTED	SCALE	LOT	NO	REV
±.015	±1" 4-1	W	A	61547 J

DR	J.R. KINKLE	DE	Kinkle 1-14-69
CHK	Kinkle 1-14-69	APP	

NAME **.050 DIA PIN RECEPTACLE**