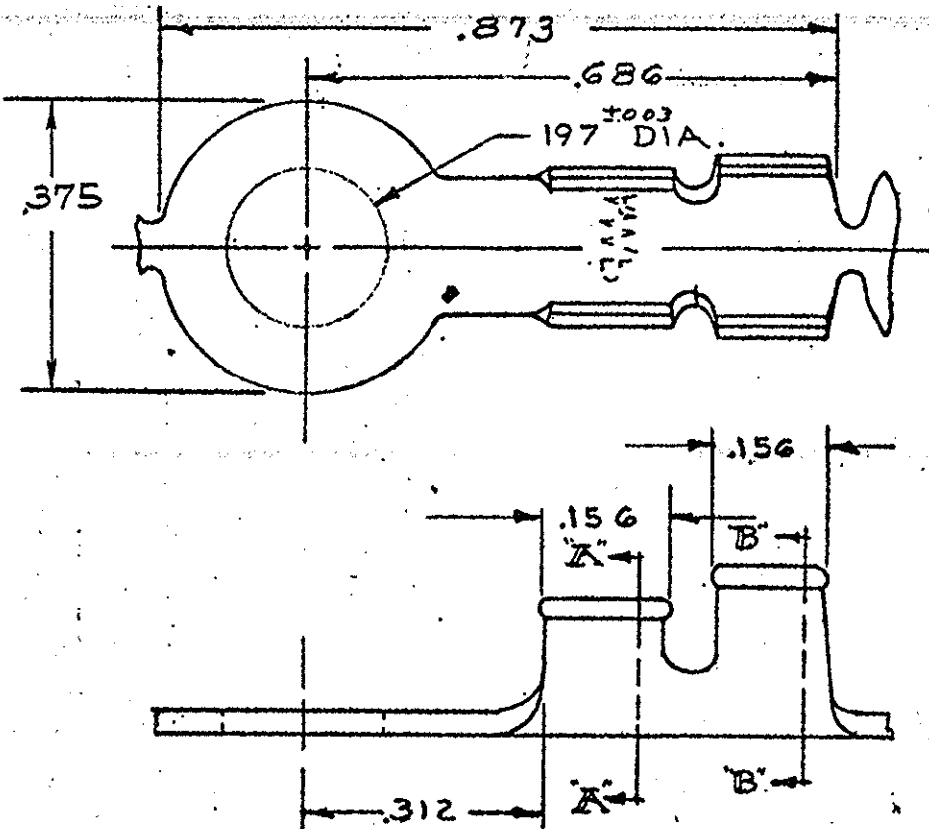


NUMBER 640007



SECT. A-A

SECT. B-B

1 CONTINUOUS STRIP, ON REELS

| PART NO. | FINISH |
|----------|------------|
| 640007-1 | BRIGHT TIN |
| 640007-3 | TIN |

UNPUBLISHED COPY NOT TO BE REPRODUCED NOR PUBLISHED WITHOUT WRITTEN PERMISSION OF AMP INCORPORATED.

DIMENSIONS IN INCHES. DO NOT SCALE PRINT.

| | | | | | | | |
|--|--|--------------------------|------|---|-------|---|------------|
| C1 REV PER ECR-06-000453 MF DFD 9-JAN-06 | | | | ©1973 BY AMP INCORPORATED. ALL RIGHTS RESERVED. AMP PRODUCTS COVERED BY PATENTS AND/OR PATENTS PENDING. | | CUSTOMER COPY REFERENCE ONLY | |
| C REV PER 063A-0348-03 MF DFD 9-JUN-03 | | | | MATERIAL AND FINISH | | AMP AMP INCORPORATED HARRISBURG, PENNA. | |
| B REV PER 063A-0261-03 MSP DFD 5-MAY-03 | | | | .030 BRASS | | CLASS —//— | |
| A REV PER AT-6785 — P.M.F. 7/9/0 | | | | FINISH: SEE TABLE | | TYPE —//— | |
| LTR REVISION RECORD | | ECN | DR | CHK | DATE | TOLERANCE EXCEPT AS NOTED ±.015 ±1° 0' | SCALE —//— |
| DR G Yetter 8-9-73 | | DE A.E. THORNTON 8-13-73 | NAME | | LOC A | NO 640007 | REV CI |
| CHK 8-13-73 | | APP | RING | | | | |

PRINT DIST 50