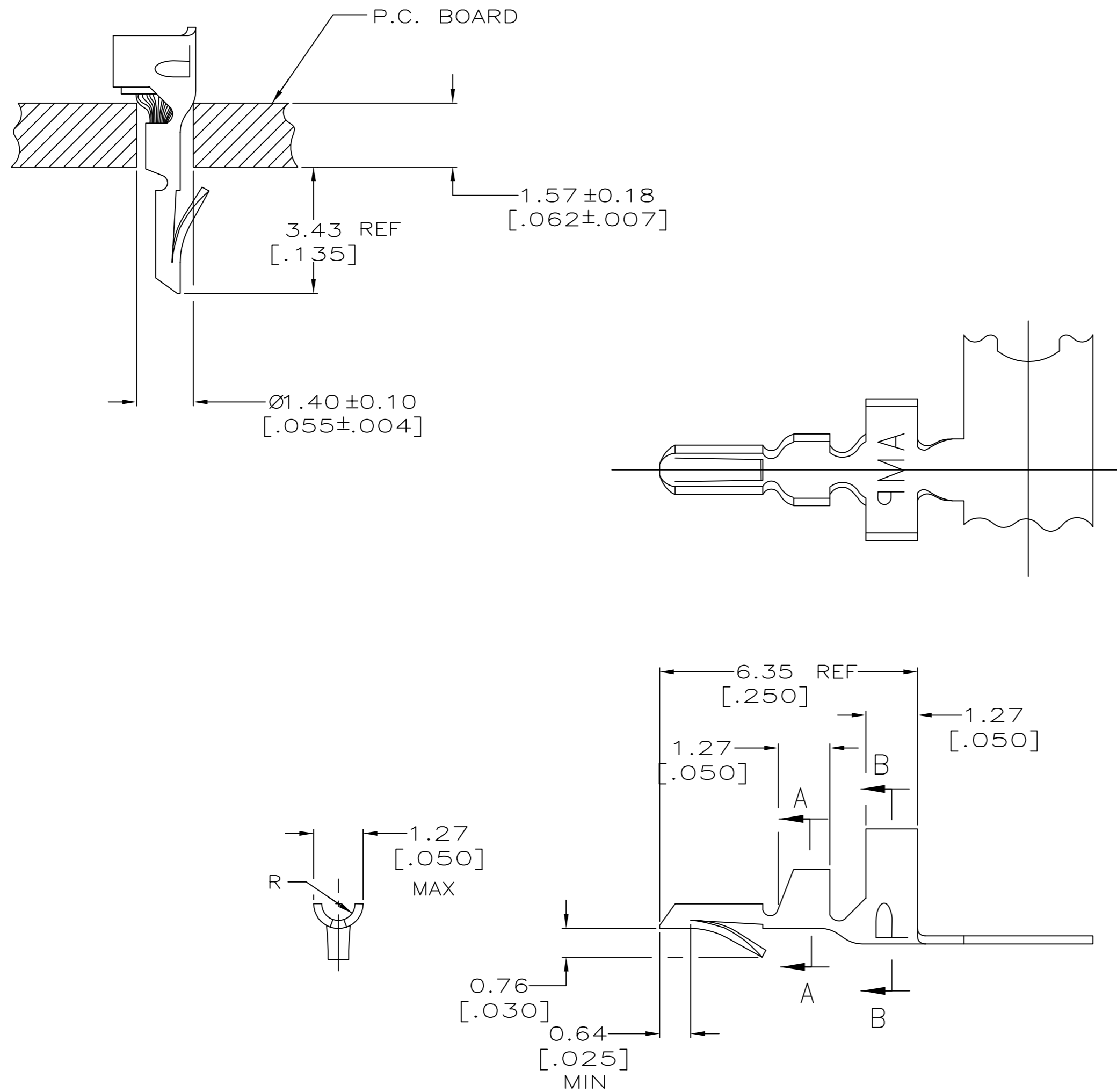
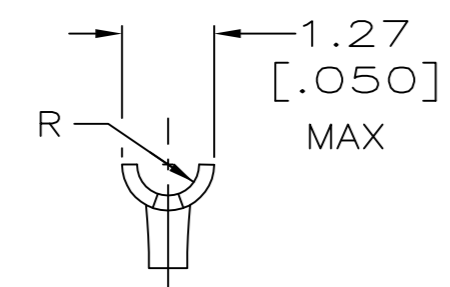
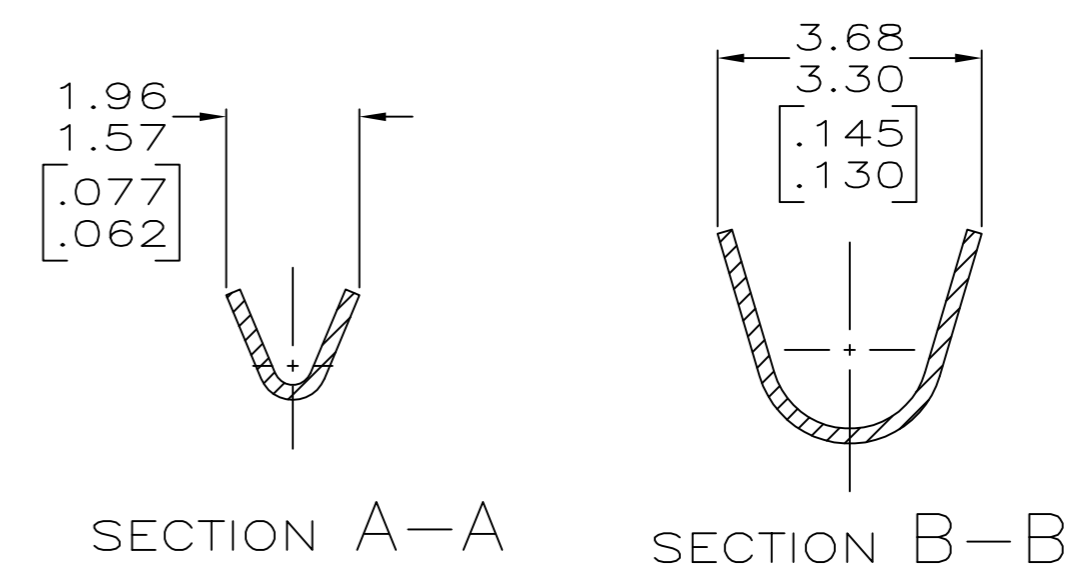


P	LTR	DESCRIPTION	DATE	DWN	APVD
	N2	REVISED PER ECR-17-013215	18SEP17	J.Z	D.Z



- PARTS COMPLY WITH AMP SOLDERABILITY SPEC 109-11-3.
- PARTS CAPABLE OF BEING APPLIED BY AMPOMATOR.
- WIRE RANGE: 0.12-0.4mm² (26-22 AWG).
- INSULATION RANGE: 1.52-2.54 [.060-.100] DIA
- △ 0.00508 [.000200] MIN BRIGHT TIN-LEAD.
- DIMENSIONS IN BRACKETS ARE IN INCHES.
- △ 0.00508 [.000200] MIN BRIGHT TIN.



METRIC

△	0.20[.008] PHOS BRONZE	3-640108-1
△	0.20[.008] PHOS BRONZE	640108-1
FINISH	MATERIAL	PART NO.

THIS DRAWING IS A CONTROLLED DOCUMENT.		DWN 21AUG2003 S. CARPENTER	TE TE Connectivity	
DIMENSIONS: INCHES		CHK 21AUG2003 J. ELLIS		
TOLERANCES UNLESS OTHERWISE SPECIFIED:		APVD 21AUG2003 J. ELLIS	NAME MINI AMP-IN	
0 PLC ±		PRODUCT SPEC	APPLICATION SPEC	
1 PLC ±			114-1016	
2 PLC ± 0.13 [.005]			WEIGHT 0.000000	
3 PLC ±			SIZE A2	CAGE CODE 00779
4 PLC ±			DRAWING NO C=640108	RESTRICTED TO -
ANGLES ±			SCALE 10:1	SHEET 1 of 1
FINISH			CUSTOMER DRAWING	REV N2