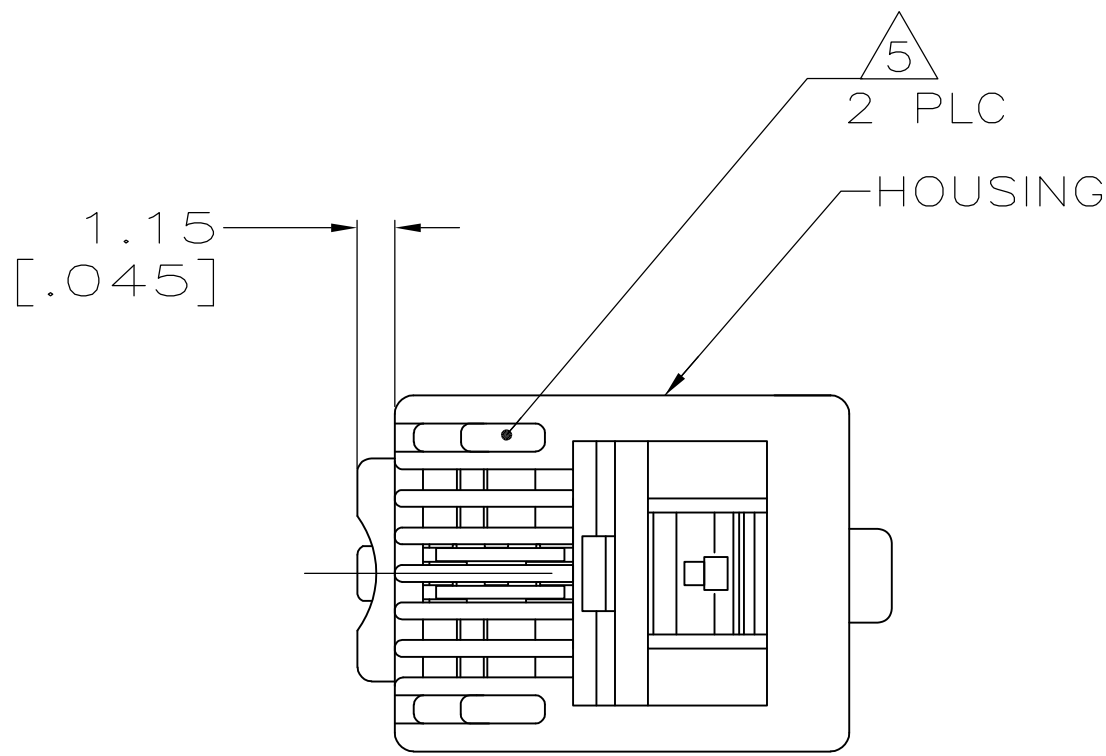
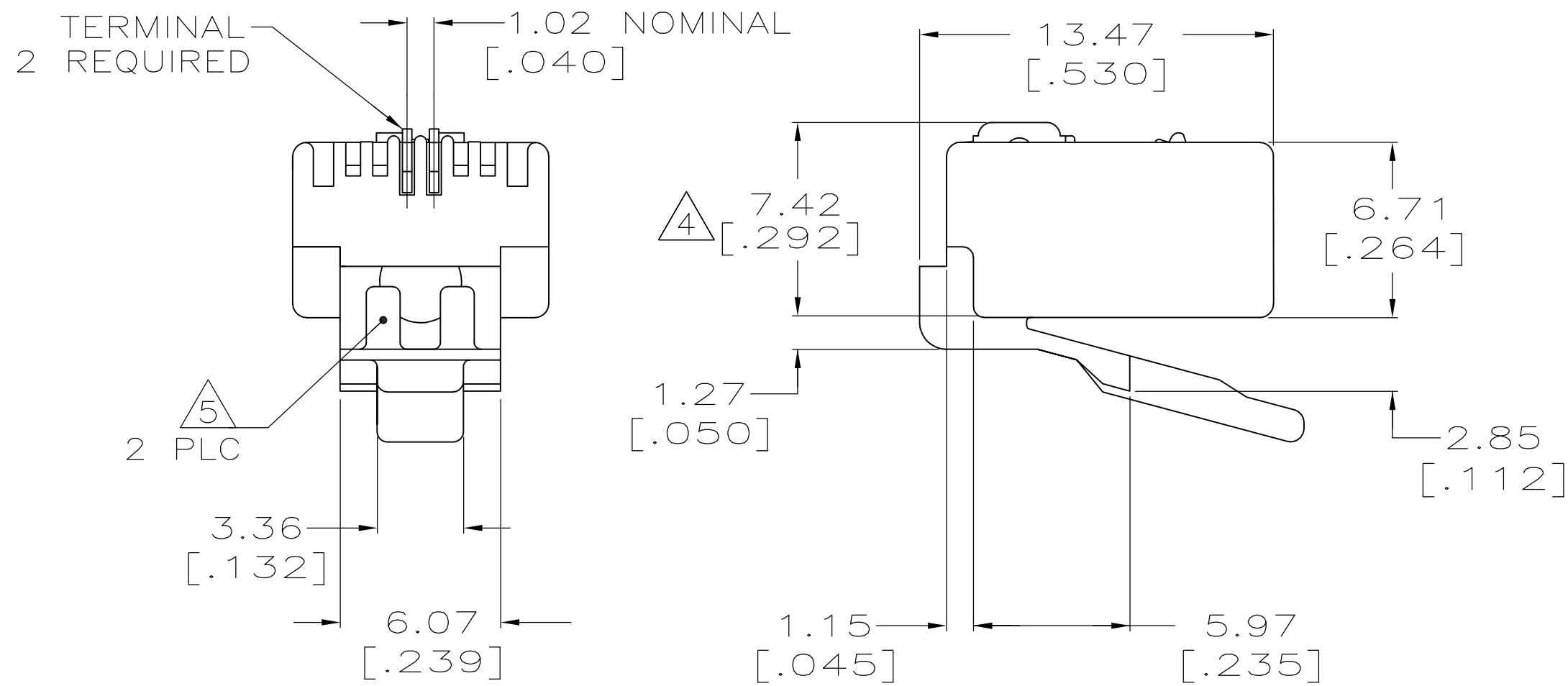


LOC	DIST	REVISIONS							GG	EL
		P	LTR	DESCRIPTION				DATE		
HM	00		S	REV; ECO-14-004548				27MAR2014	GG	JG

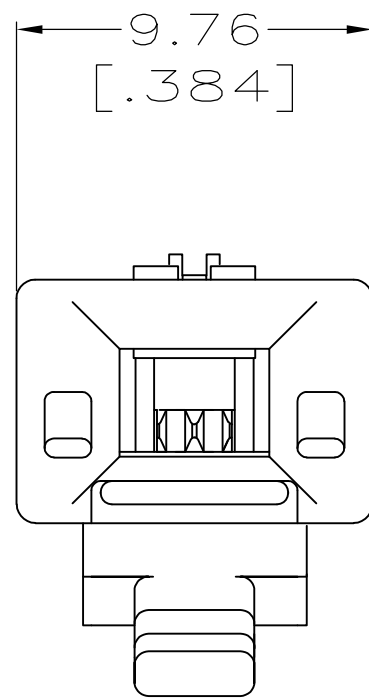
D



C



B



A

- ALL DIMENSIONS SHOWN ARE FOR REFERENCE ONLY UNLESS OTHERWISE SPECIFIED.
- MATERIAL: HOUSING—POLYCARBONATE CLEAR. TERMINAL — .36 [.014] THICK PHOSPHOR BRONZE PLATED WITH .178 μ m[.000007] THICK GOLD IN LOCALIZED PLATE AREA, OVER .762 μ m[.000030] THICK PALLADIUM NICKEL IN LOCALIZED PLATE AREA OVER 2.54 μ m[.000100] THICK NICKEL ON ENTIRE CONTACT.
- PLUG WILL EXCEPT 26 OR 28 AWG STRANDED OR TINSEL WIRE HAVING A MAXIMUM INSULATION OF ϕ 0.99[.039] AND A MAXIMUM OVAL CABLE JACKET OF 2.29x4.06 [.090x.160].
- TERMINATED DIMENSION TO MEET FCC REQUIREMENTS .237 \pm .005.
- REELED PRODUCT ON STRIP DOES NOT HAVE VOID CORING ILLUSTRATED ON THIS DRAWING.

D

C

B

A

SUPSD BY 5-641333-2	1000 PER PACKAGE		5-641333-2	
	REELED 5		641333-1	
		DESCRIPTION		PART NO.
THIS DRAWING IS A CONTROLLED DOCUMENT.		DWN L. HALL 20FEB2007	TE Connectivity	
		CHK C. DOOLEY 20FEB2007		
DIMENSIONS: INCHES		APVD C. DOOLEY 20FEB2007	NAME	
		PRODUCT SPEC		
		108-1163	MODULAR PLUG ASSEMBLY, 2 POSITION, LINE STRANDED WIRE	
		APPLICATION SPEC		
MATERIAL - 2		114-6016	SIZE A2 CAGE CODE 00779 DRAWING NO C-641333	
		WEIGHT -		
		CUSTOMER DRAWING		RESTRICTED TO -
		SCALE 5:1	SHEET 1 of 1	REV S