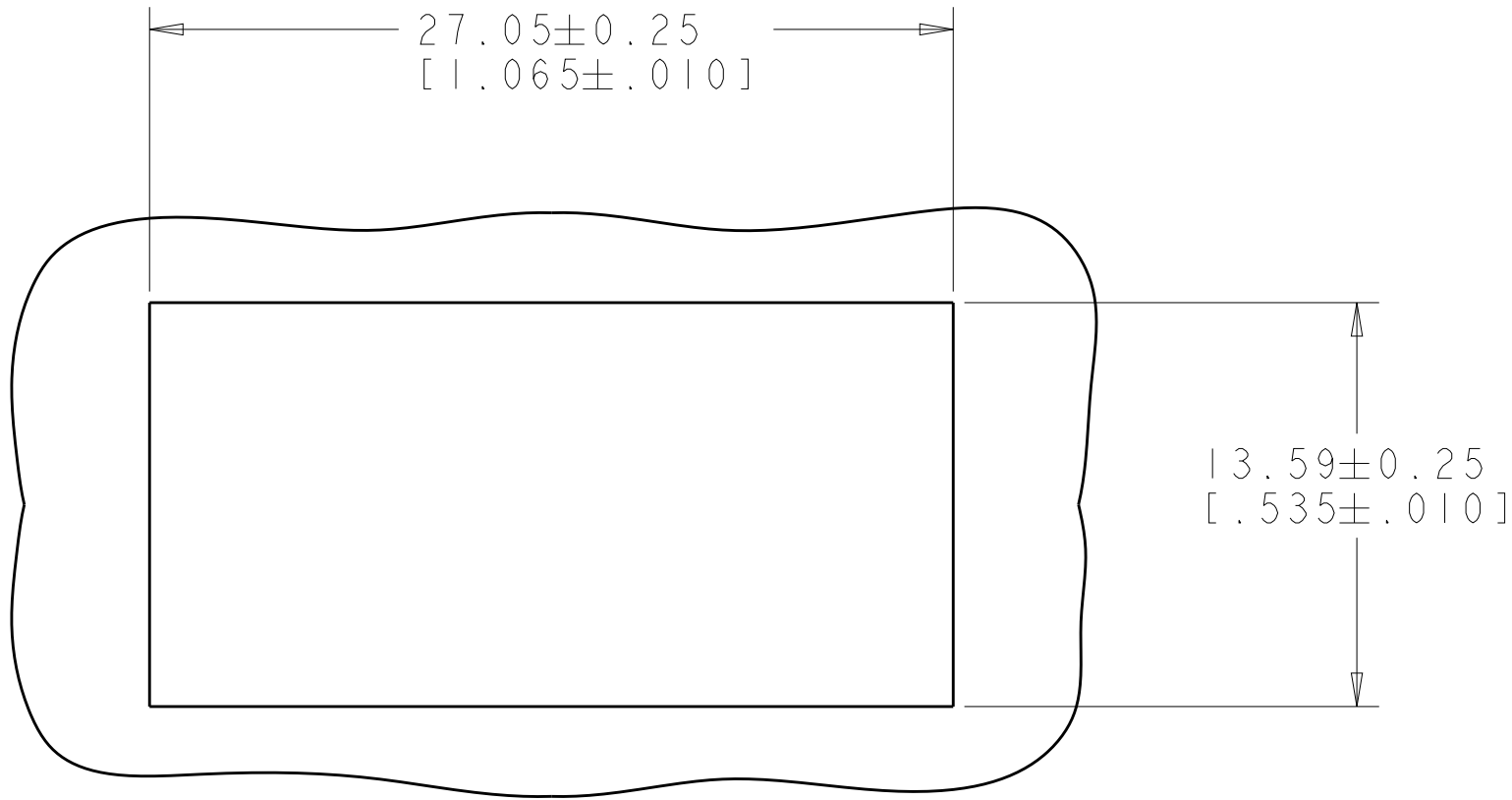
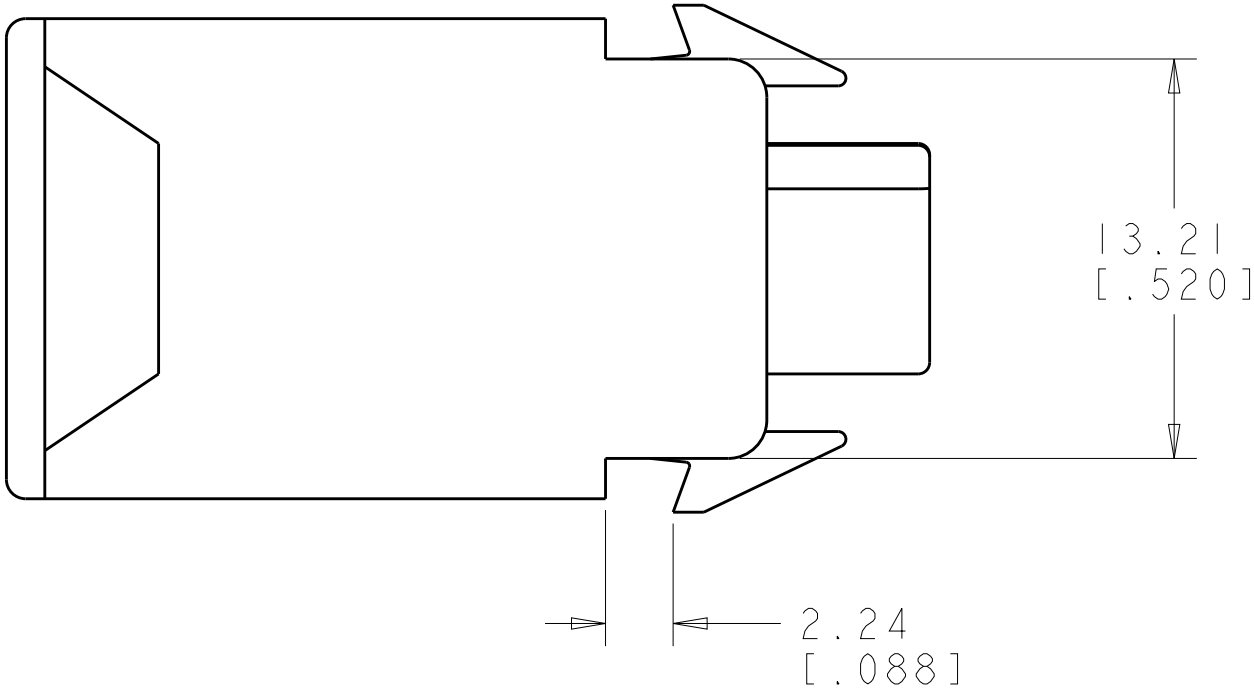
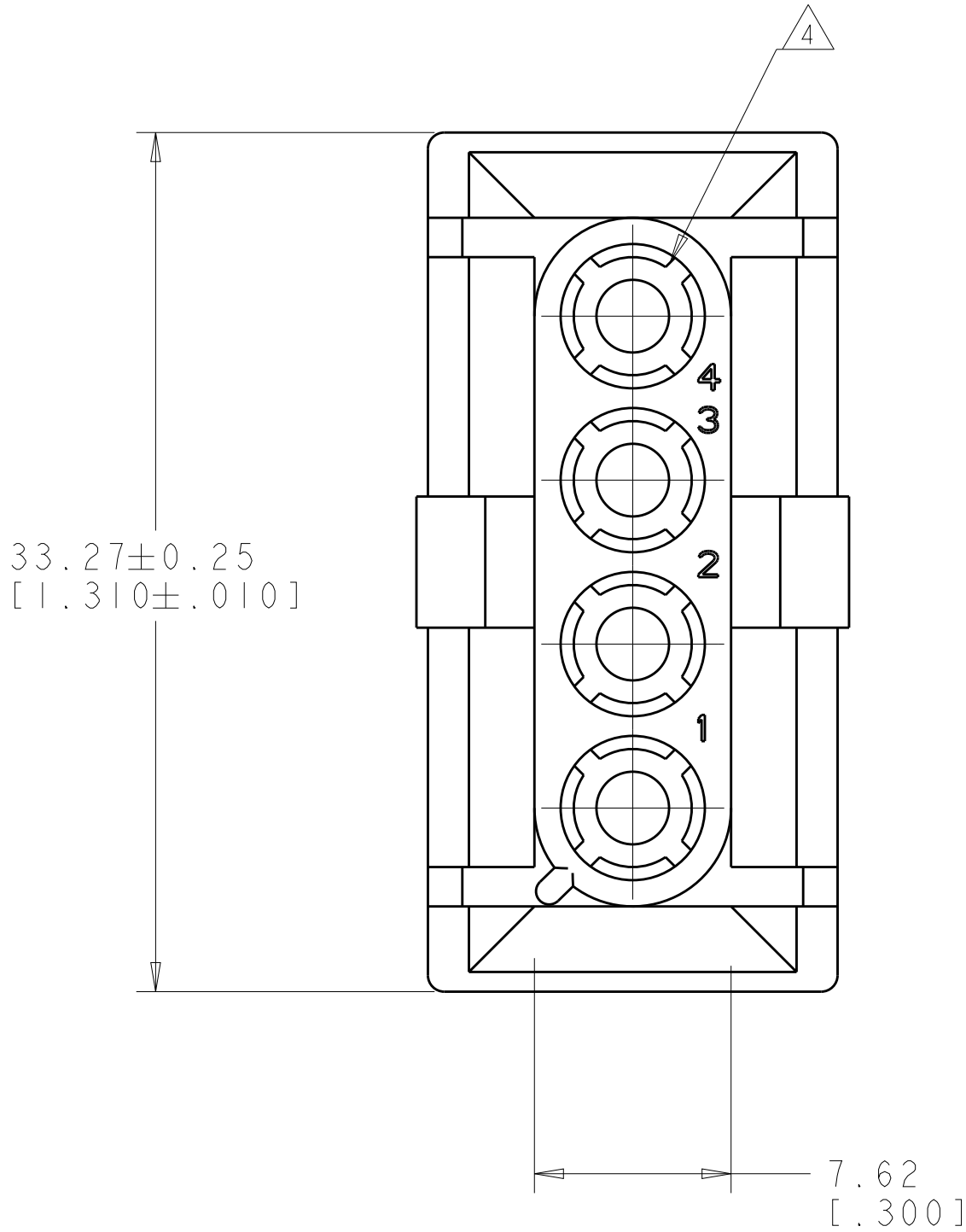
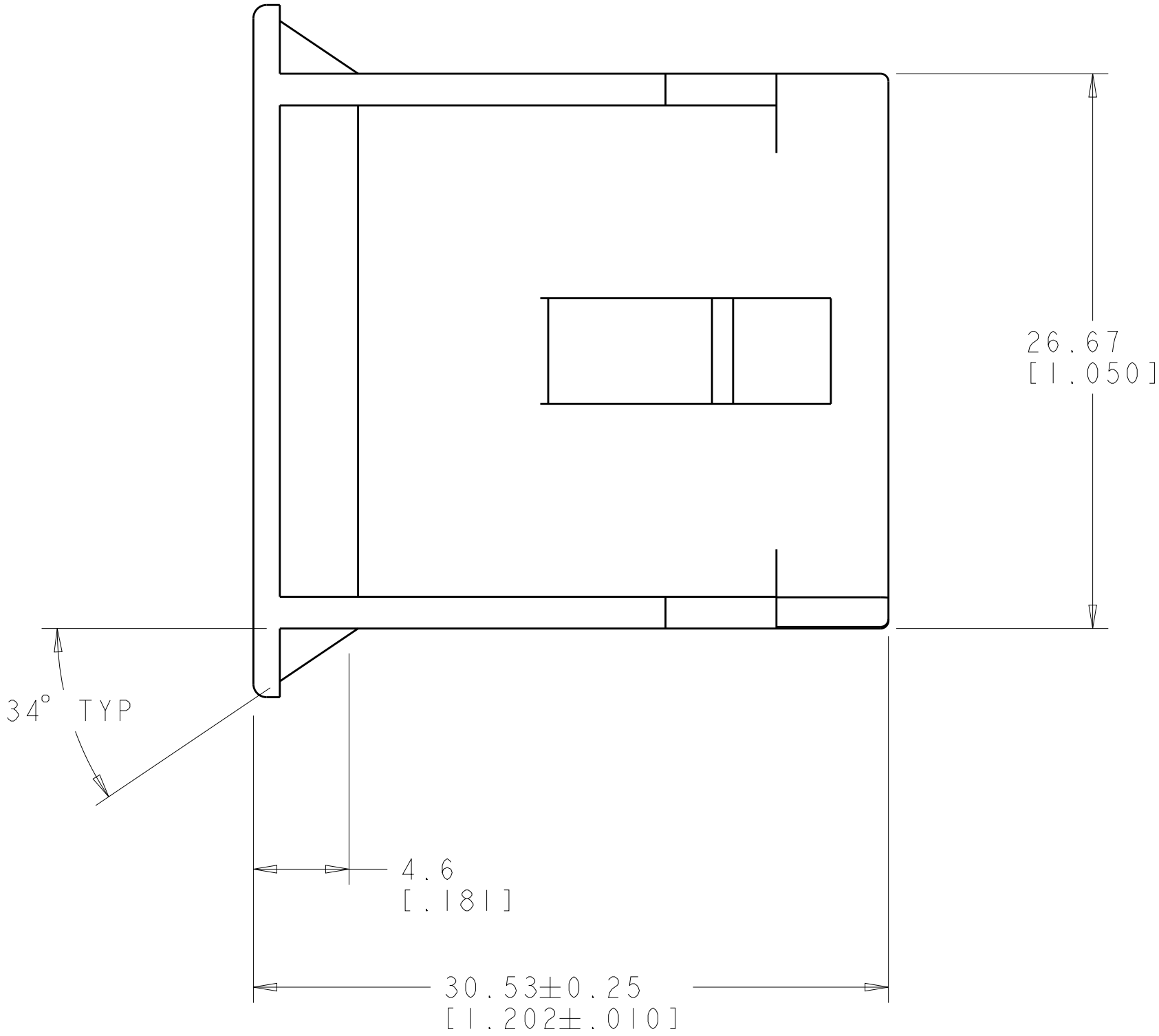
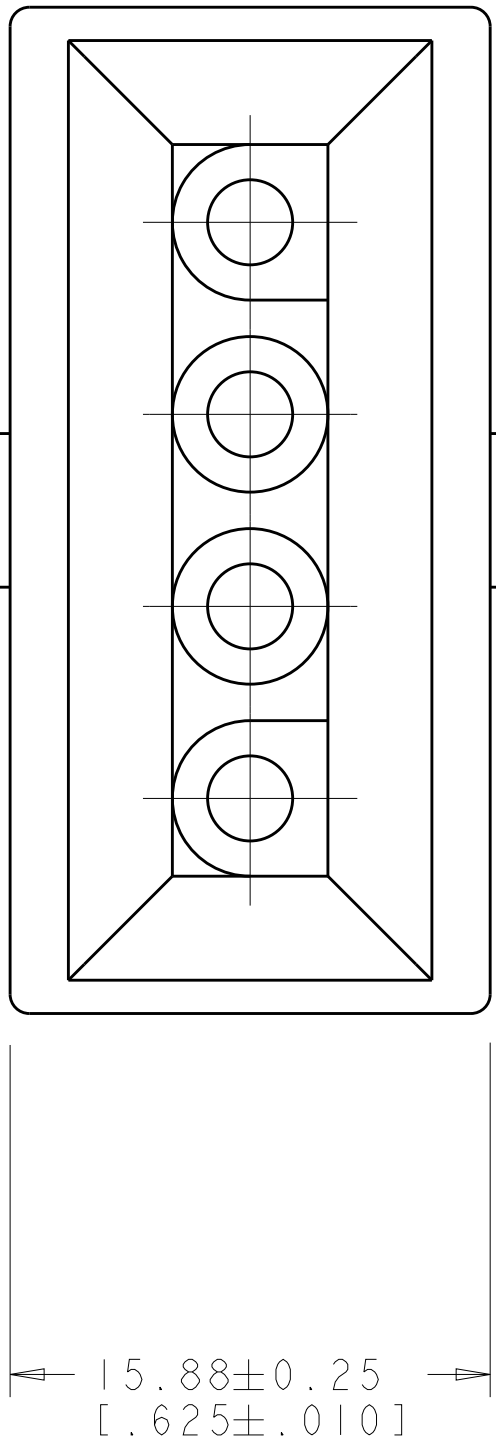
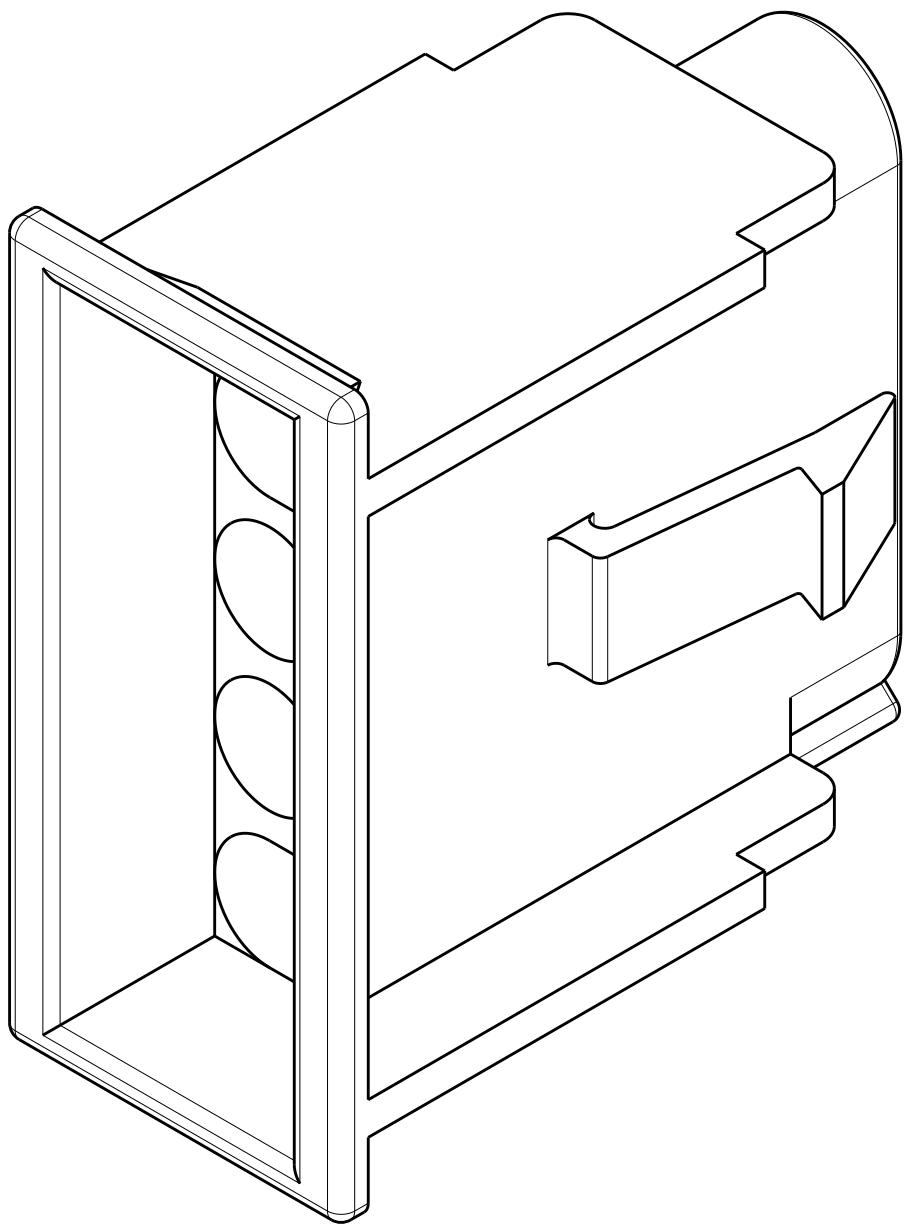


LOC		DIST		REVISIONS				
P	LTR	DESCRIPTION			DATE	DWN	APVD	
		ECO-17-009556			03JUL2017	RS	SW	

- ⚠️ PANEL THICKNESS  $2.5 \pm 0.25$  [.098±.010].
2. PANEL MUST BE PUNCHED SO THAT THE HOUSING ENTERS THE PANEL IN THE SAME DIRECTION AS THE PUNCH.
3. DIMENSIONS SHOWN REPRESENT PRODUCT IN DRY, AS MOLDED CONDITION. ADDITIONAL 2% GROWTH DUE TO SUBSEQUENT MOISTURE ABSORPTION MAY OCCUR AND SHOULD BE ACCOUNTED FOR
- ⚠️ RIBS EQUALLY SPACED, NO SPECIFIC ORIENTATION. FOUR RIBS PREFERRED, SIX RIBS OPTIONAL.



RECOMMENDED PANEL CUT OUT ⚠️



METRIC

THIS DRAWING IS A CONTROLLED DOCUMENT FOR TYCO ELECTRONICS CORPORATION. IT IS SUBJECT TO CHANGE AND SHOULD BE CONTROLLED BY THE ISSUING ORGANIZATION. SHOULD BE CONTACTED FOR THE LATEST REVISION.				DWN K. WHITAKER 04NOV2008	Tyco Electronics Harrisburg, PA 17105-3608			
DIMENSIONS: mm[INCHES]				CHK D. COLEY 04NOV2008	NAME  CAP, LEAD-IN RAMP, 4 CIRCUIT, UNIVERSAL MATE-N-LOK(TM)	SIZE CAGE CODE DRAWING NO RESTRICTED TO  A100779C=770002		
TOLERANCES UNLESS OTHERWISE SPECIFIED:				APVD D. COLEY 04NOV2008				
0 PLC ±.013 [.005]				PRODUCT SPEC				
1 PLC ±.013 [.005]				APPLICATION SPEC				
2 PLC ±.013 [.005]				WEIGHT				
3 PLC ±.013 [.005]				CUSTOMER DRAWING				
4 PLC ±.013 [.005]				SCALE				
ANGLES ±.013 [.005]				SHEET				
FINISH				OF				
MATERIAL NYLON UL94V-0, WHITE				REV				