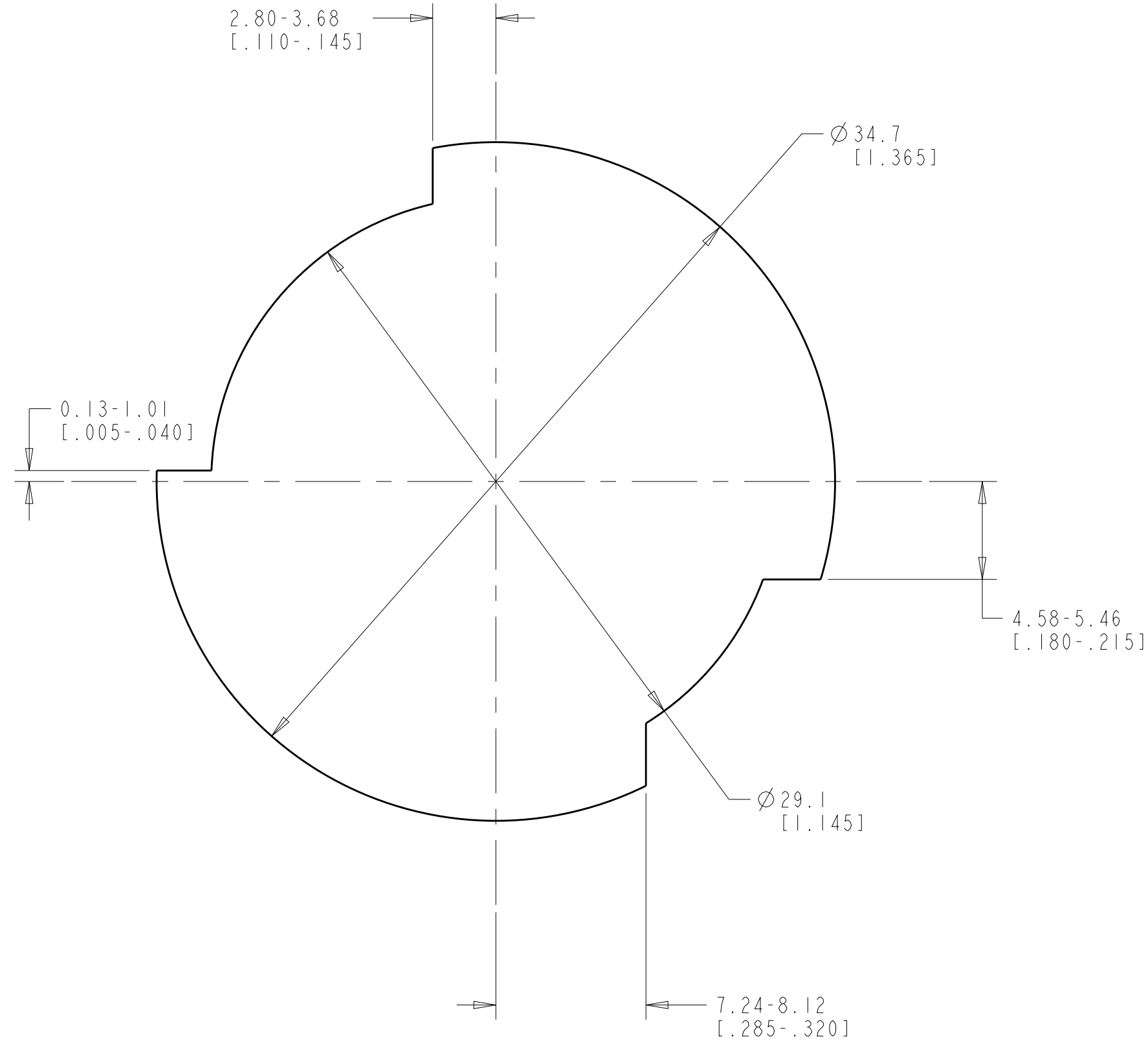
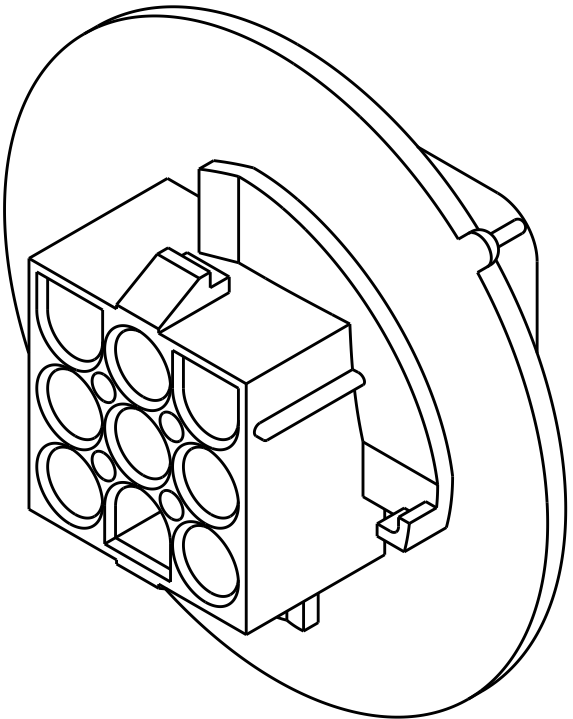
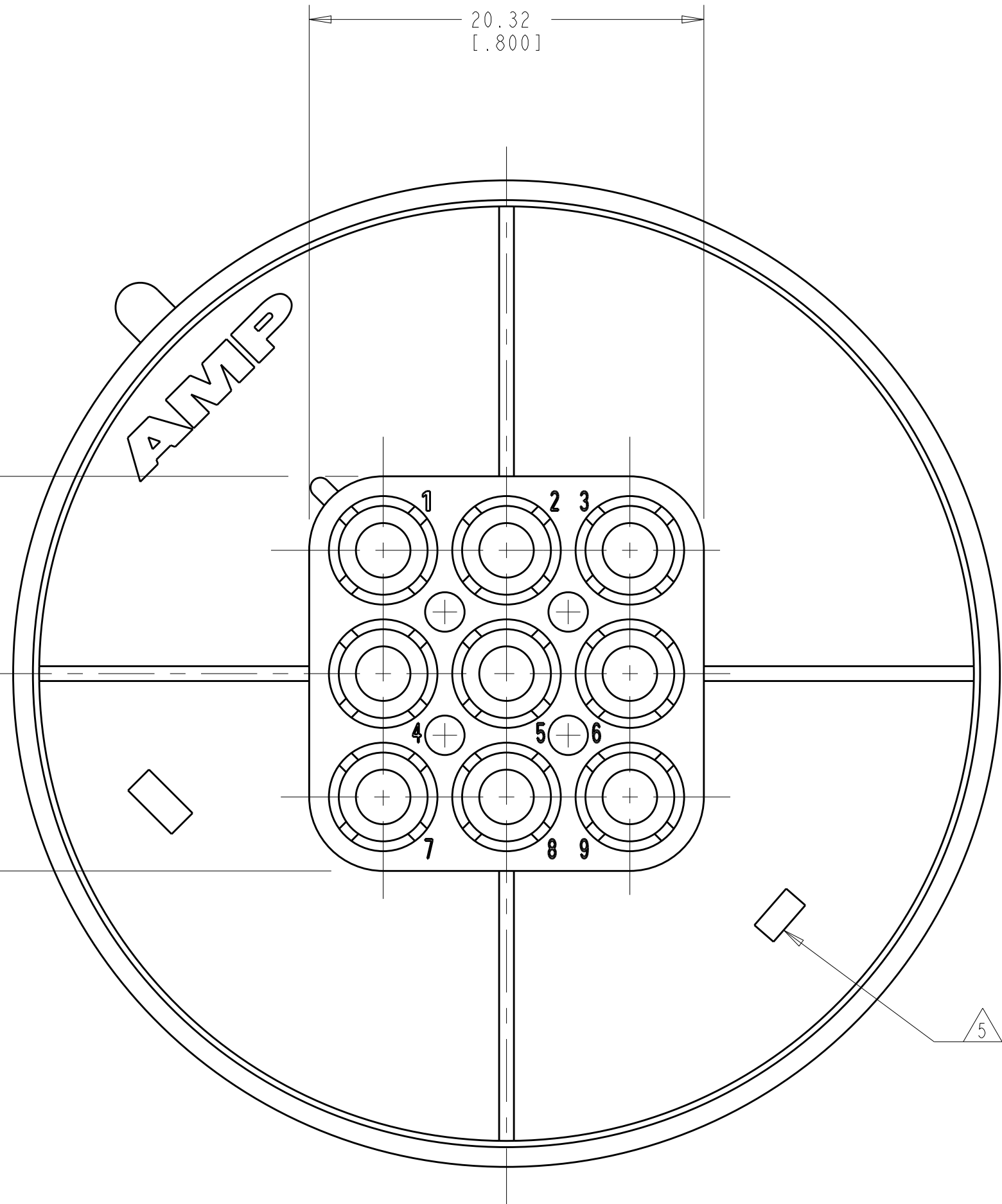
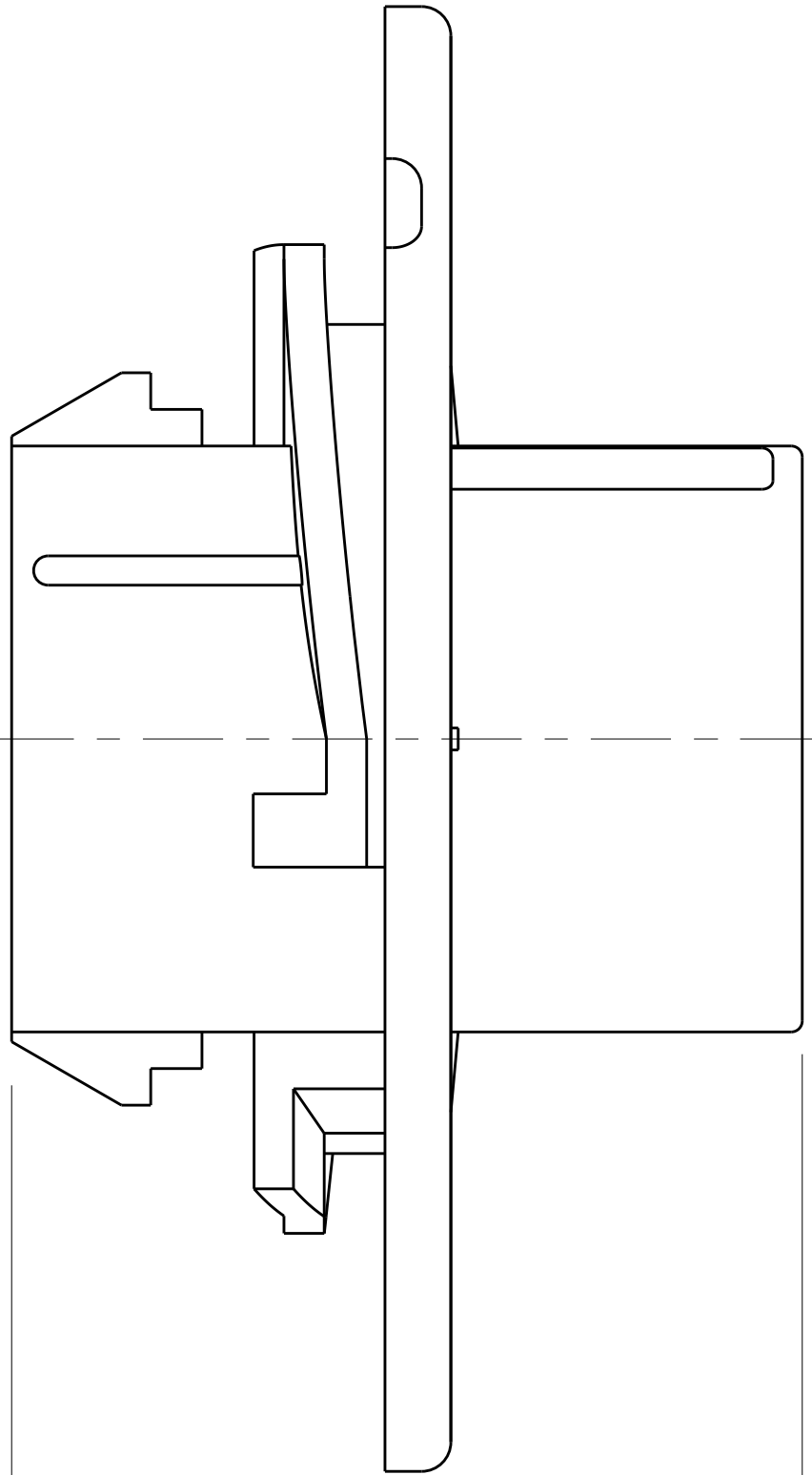
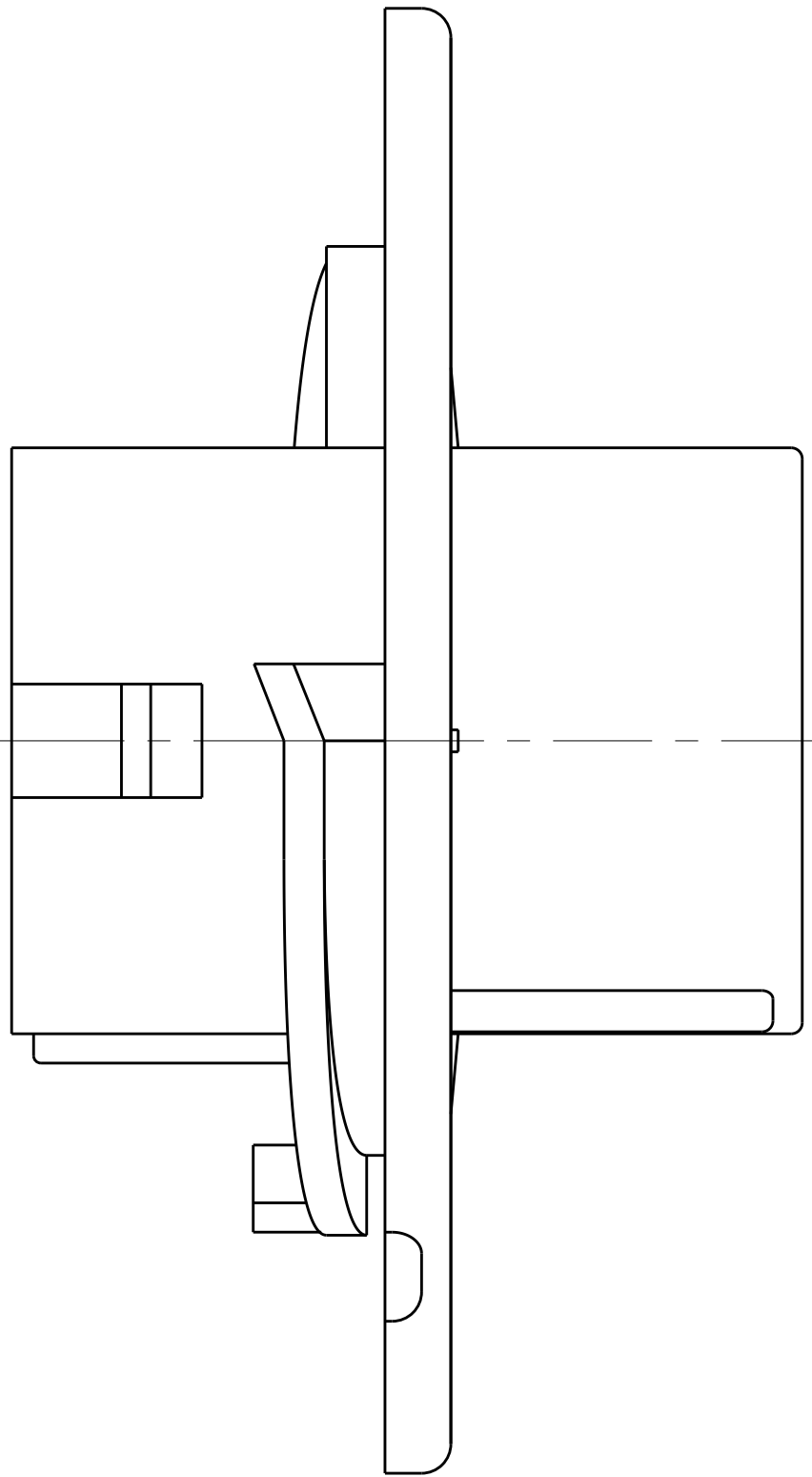
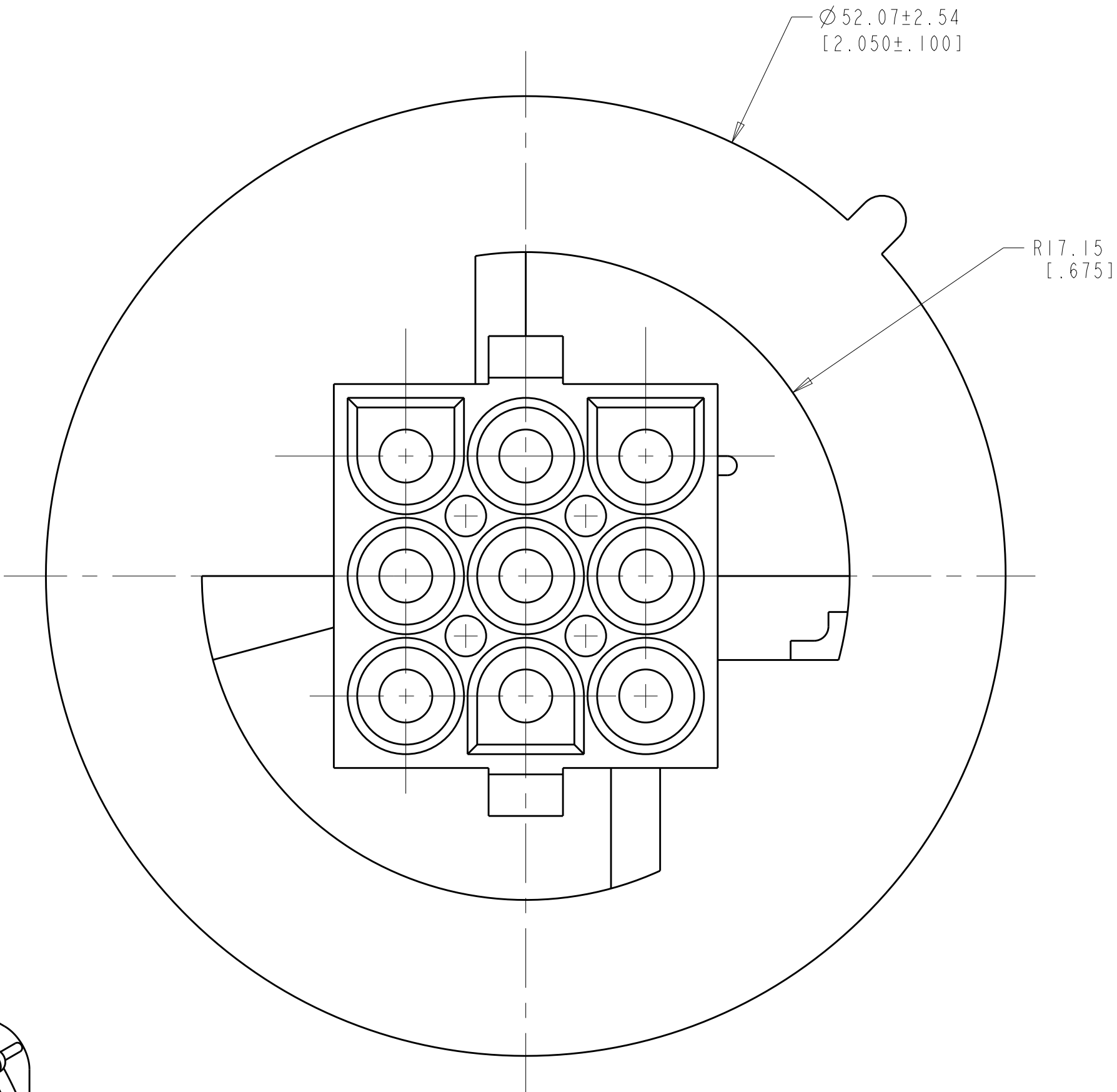


LOC	DIST	REVISIONS					
CM	00	P	LTR	DESCRIPTION	DATE	DWN	APVD
			M	REVISED PER ECR-17-015775	03NOV2017	BDA	KR

1. MATES WITH APPROPRIATE UNIVERSAL MATE-N-LOK™ PLUG.
2. RECOMMENDED PANEL THICKNESS 0.76 - 2.29 [ .030 - .090 ].
3. PANEL MUST BE PUNCHED SO THAT THE HOUSING ENTERS THE PANEL IN THE SAME DIRECTION AS THE PUNCH.
4. DIMENSIONS SHOWN REPRESENT PRODUCT IN DRY, AS MOLDED CONDITION ADDITIONAL 2% GROWTH DUE TO SUBSEQUENT MOISTURE ABSORPTION MAY OCCUR AND SHOULD BE ACCOUNTED FOR.
5. UL AND CSA LOGOS LOCATED APPROXIMATELY AS SHOWN



RECOMMENDED CUT OUT



3-DIMENSIONAL MODEL  
SCALE 2:1

BLACK	1-794715-9
GRAY	1-794715-8
BLUE	1-794715-6
GREEN	1-794715-5
YELLOW	1-794715-4
ORANGE	1-794715-3
RED	1-794715-2
BROWN	1-794715-1
NATURAL	794715-1
COLOR	PART NUMBER

THIS DRAWING IS A CONTROLLED DOCUMENT.		DWN K. WHITAKER 06-OCT-1999	TE Connectivity	
DIMENSIONS: mm[INCHES]		CHK M. TRULL 06-OCT-1999		
	TOLERANCES UNLESS OTHERWISE SPECIFIED:	APVD M. TRULL 06-OCT-1999	NAME	
	0 PLC ±	PRODUCT SPEC	CAP. 9 CIRCUIT, UNIVERSAL MATE-N-LOK(TM), SPECIAL	
	1 PLC ±	APPLICATION SPEC		
	2 PLC ±0.51(.020)			
MATERIAL NYLON UL 94V-2, NATURAL		WEIGHT	SIZE A1	CAGE CODE 00779
		CUSTOMER DRAWING	DRAWING NO. 794715	REV M