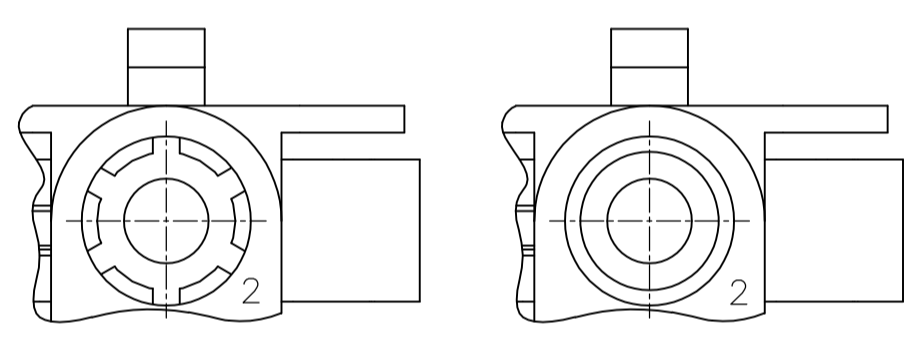
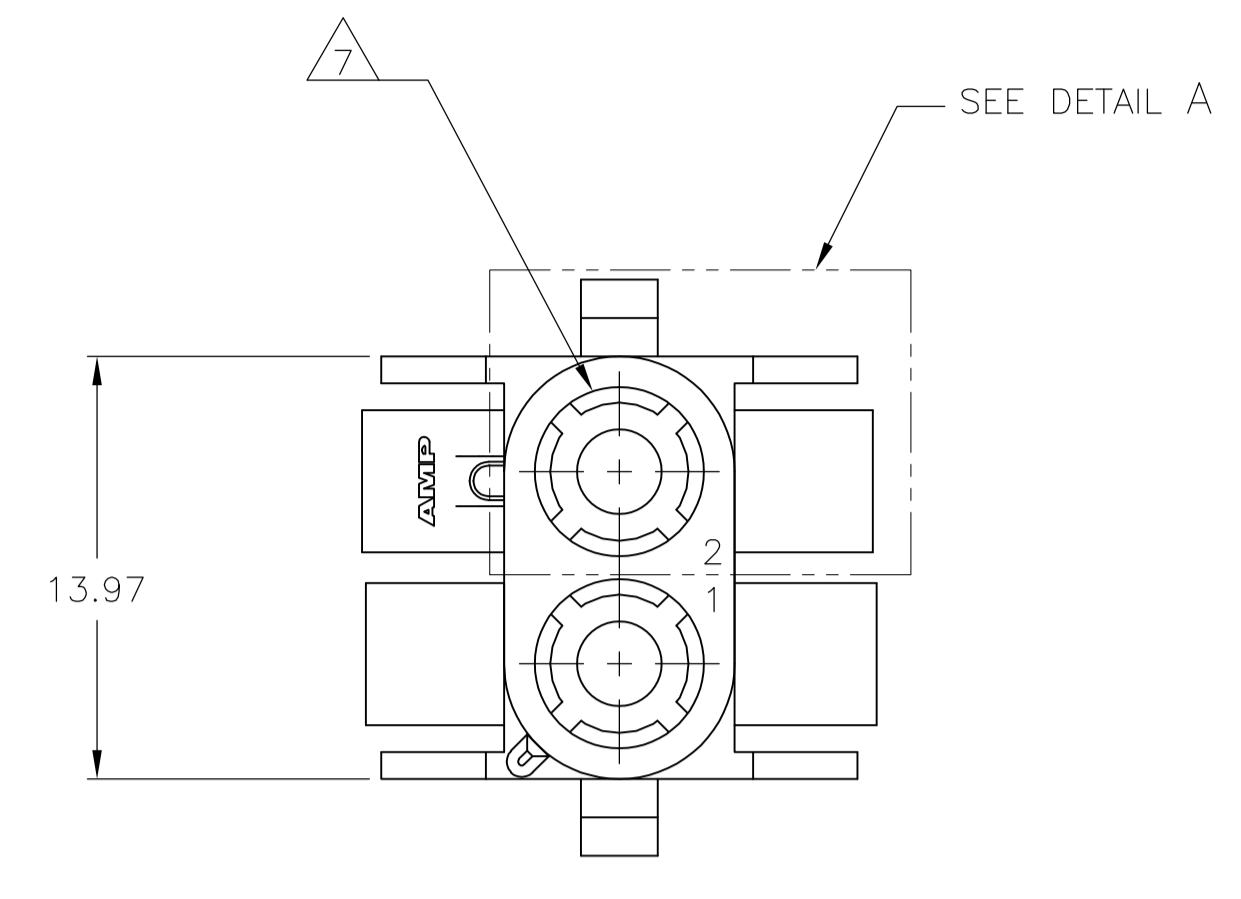
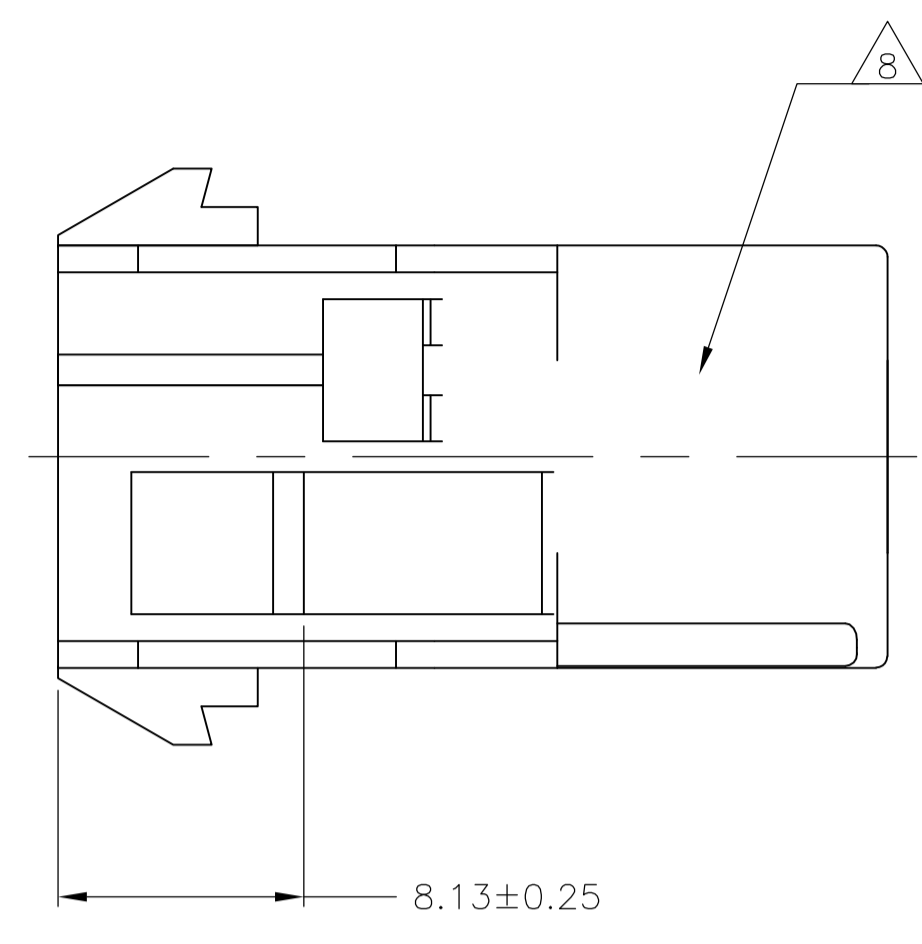
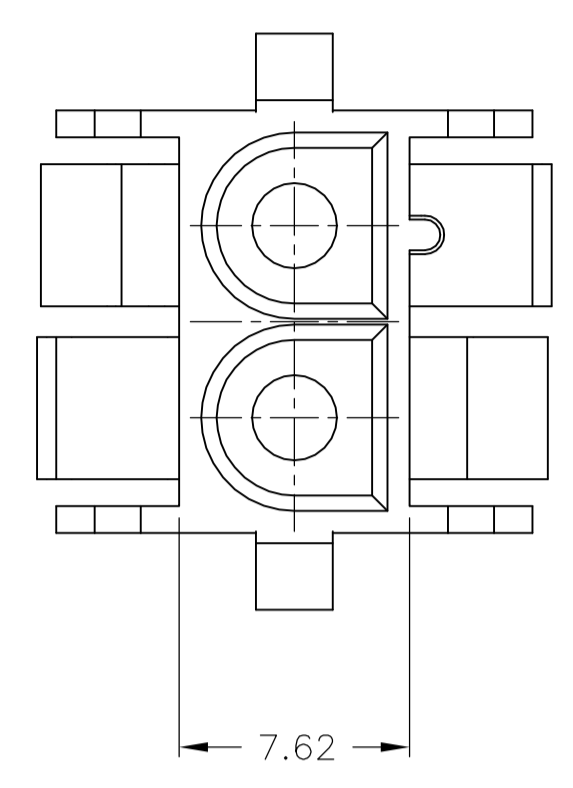
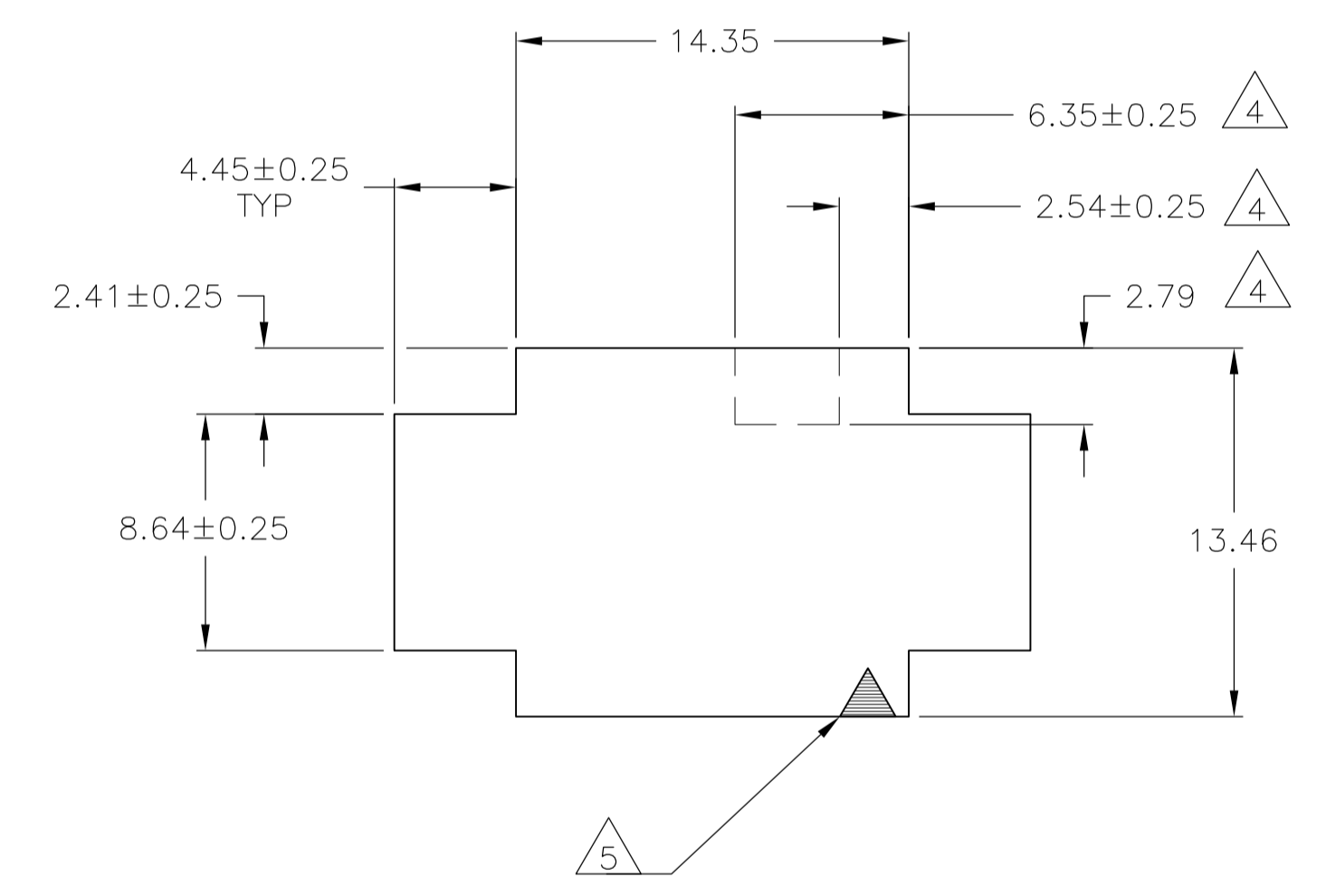
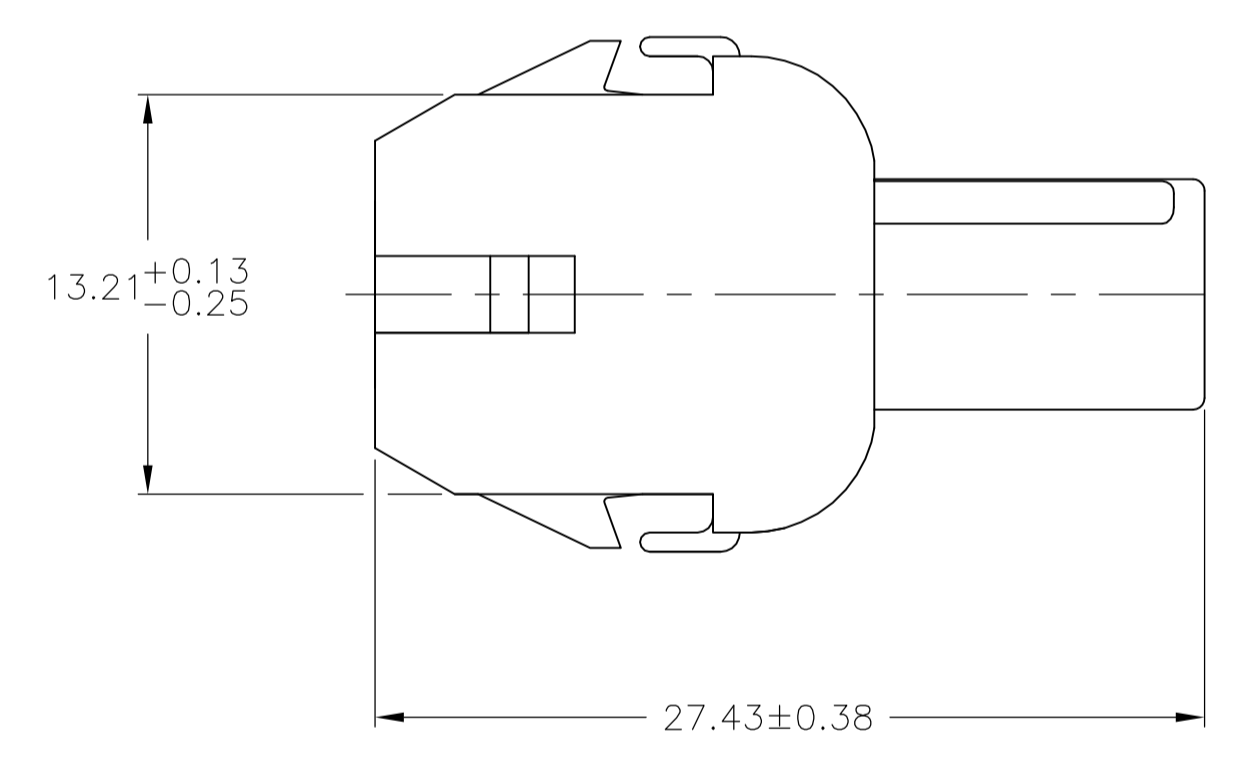


| REVISIONS |     |                           |           |       |
|-----------|-----|---------------------------|-----------|-------|
| P         | LTR | DESCRIPTION               | DATE      | OWN   |
| A4        |     | REVISED PER ECO-17-011927 | 22AUG2017 | RS KR |

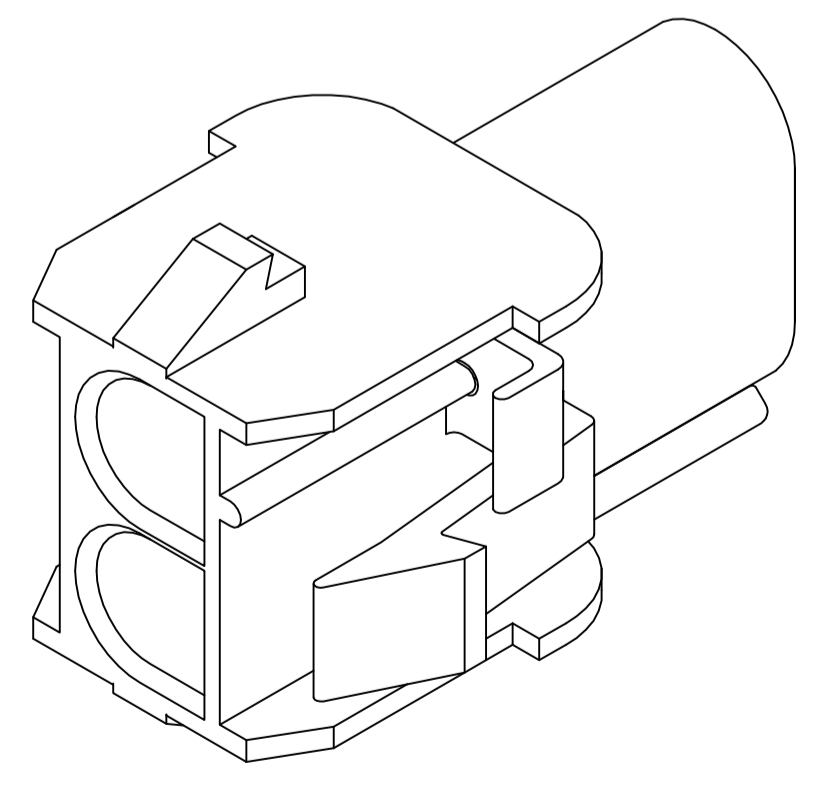
- 1 MATES WITH APPROPRIATE UNIVERSAL MATE-N-LOK™ PLUG.
- 2 RECOMMENDED PANEL THICKNESS 0.76 - 2.29.
- 3 PANEL MUST BE PUNCHED SO THAT THE HOUSING ENTERS THE PANEL IN THE SAME DIRECTION AS THE PUNCH.
- 4 OPTIONAL FOR KEYING HOUSING IN PANEL.
- 5 CIRCUIT NUMBER 1 LOCATION.
- 6 DIMENSIONS SHOWN REPRESENT PRODUCT IN DRY, AS MOLDED CONDITION ADDITIONAL 2% GROWTH DUE TO SUBSEQUENT MOISTURE ABSORPTION MAY OCCUR AND SHOULD BE ACCOUNTED FOR.
- 7 FOUR RIBS EQUALLY SPACED, NO SPECIFIC ORIENTATION. NO RIBS OR SIX RIBS EQUALLY SPACED, NO SPECIFIC ORIENTATION, OPTIONAL.
- 8 UNDERWRITERS RECOGNIZED COMPONENT LOGO AND CSA CERTIFICATION LOGO TO BE LOCATED ONCE EACH ON SIDE OF HOUSING.
- 9 MAX. OPERATING TEMPERATURE 125°C.
- 10 SPECIAL PACKAGING.
- 11 PHOSPHOR BRONZE CONTACTS SHOULD ALWAYS BE USED WITH THIS HOUSING.



DETAIL A  
OPTIONAL CONSTRUCTIONS



RECOMMENDED PANEL CUT-OUT



3 DIMENSIONAL MODEL  
NTS

| MM   | IN   | MM    | IN    |
|------|------|-------|-------|
| 4.45 | .175 | 27.43 | 1.080 |
| 2.79 | .110 | 14.35 | .565  |
| 2.54 | .100 | 13.97 | .550  |
| 2.41 | .095 | 13.46 | .530  |
| 2.29 | .090 | 13.21 | .520  |
| 0.76 | .030 | 8.64  | .340  |
| 0.38 | .015 | 8.13  | .320  |
| 0.25 | .010 | 7.62  | .300  |
| 0.13 | .005 | 6.35  | .250  |
| MM   | IN   | MM    | IN    |

CONVERSION TABLE

|    |       |            |
|----|-------|------------|
| 10 | BLACK | 8-794815-1 |
|    | BLACK | 794815-1   |
|    | COLOR | PART NO.   |

THIS DRAWING IS A CONTROLLED DOCUMENT.

|  |  |  |   |
|--|--|--|---|
| DIMENSIONS:<br>mm [INCHES]                 | TOLERANCES UNLESS OTHERWISE SPECIFIED:<br>0. PLC ± -<br>1. PLC ± -<br>2. PLC ± 0.13<br>3. PLC ± -<br>4. PLC ± -<br>ANGLES ± 1° | DIN K. WHITAKER 15MAY01<br>CHK S. RIDGILL 15MAY01<br>APVD S. RIDGILL 15MAY01 | NAME<br>CAP, 2 CIRCUIT,<br>UNIVERSAL MATE-N-LOK™ TM |
| MATERIAL<br>NYLON, UL 94V-2,<br>HIGH TEMP. | FINISH -   | SIZE A1<br>CAGE CODE C0779<br>DRAWING NO. 794815                             | RESTRICTED TO<br>CUSTOMER DRAWING                   |

SCALE 4:1 SHEET 1 OF 1 REV A4