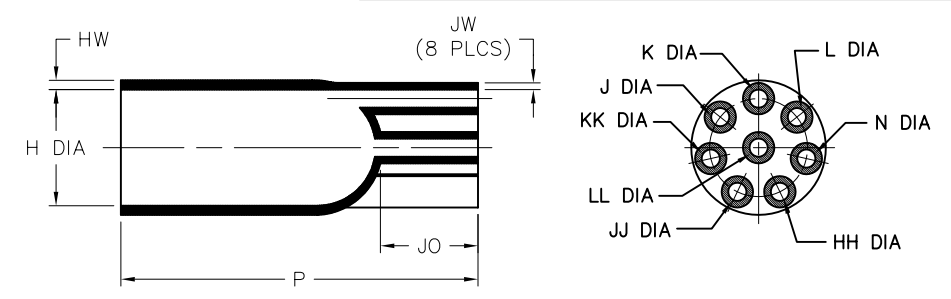
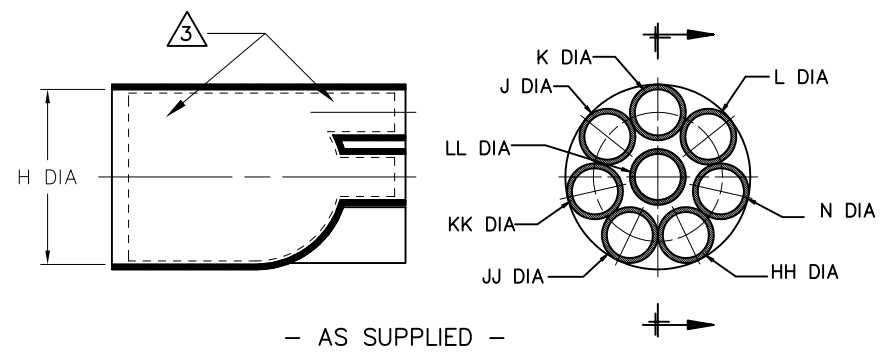


REVISIONS		
LTR	DESCRIPTION	DATE
F	REVISED PER ECO-10-001668	01/26/2010



- AS SUPPLIED -

- AFTER UNRESTRICTED RECOVERY -

NOTES

- ALL DIMENSIONS ARE IN $\frac{\text{INCHES}}{[\text{MILLIMETERS}]}$; $\frac{\text{lbs}}{[\text{gms}]}$
- DIMENSIONS APPEARING IN TABLE ARE AS FOLLOWS:
 - a - AS SUPPLIED
 - b - AFTER UNRESTRICTED RECOVERY

3. COATING (ADHESIVE): IS OPTIONAL AS SUPPLIED DIMENSIONS APPEARING IN TABLE ARE FOR UNCOATED PARTS. WHEN COATING IS ADDED, ENTRY DIAMETER WILL BE REDUCED BY .06 [1.5] MAX.

4. ORDERING INFORMATION

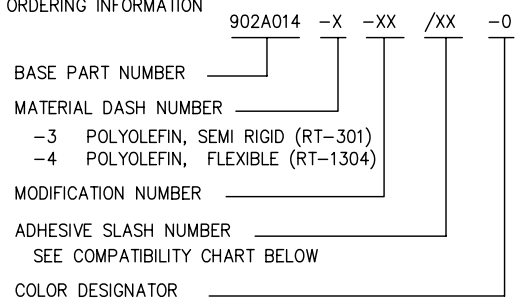


TABLE OF DIMENSIONS

PART NUMBER	H		J,K,L,N,HH,JJ,KK & LL		P ±10%	JO ±10%	HW ±20%	JW ±20%	WEIGHT REF	THIS BOOT SHALL FIT MIL-DTL-26482 SHELL SIZE
	MIN	MAX	MIN	MAX						
	a	b	a	b						
902A014	$\frac{1.27}{[32,2]}$	$\frac{1.09}{[27,7]}$	$\frac{.37}{[9,4]}$	$\frac{.18}{[4,6]}$	$\frac{4.00}{[102,8]}$	$\frac{1.40}{[35,6]}$	$\frac{0.30}{[7,62]}$	$\frac{0.10}{[2,54]}$	$\frac{.036}{[16,3]}$	20

If this document is printed it becomes uncontrolled. Check for the latest revision

CUSTOMER DRAWING

COMPATIBILITY CHART		
MATERIAL DASH NO.	ADHESIVE (COATING) SLASH NUMBER	ADHESIVE (COATING) S NUMBER
-3	/42; /86; /87	S-1017; S-1048; S-1052
-4	/42; /86; /87	S-1017; S-1048; S-1052

UNLESS OTHERWISE SPECIFIED DIMENSIONS ARE INCHES. METRIC DIMENSIONS ARE IN BRACKETS. DECIMAL TOLERANCES .XXX ± 0.005 [0.13 mm] .XX ± 0.01 [0.25 mm] .X ± 0.1 [0.50 mm] ANGLE TOLERANCE .X ± 1 DEG.		DRAWN UNGUYEN APPROVED DHURRELL THIRD ANGLE PROJECTION	Raychem Molded Parts 305 Constitution Dr Menlo Park, CA 94025
TYCO ELECTRONICS RESERVES THE RIGHT TO AMEND THIS DRAWING AT ANY TIME. USERS SHOULD EVALUATE THE SUITABILITY OF THE PRODUCT FOR THEIR APPLICATION.		TITLE BOOT, STRAIGHT, EIGHT ENTRY	SIZE B
© 2008-2010 Tyco Electronics Corporation. All rights reserved.		CODE IDENT. NO. 06090	DWG. NO. 902A014
		DO NOT SCALE THIS DRAWING	SHEET 1 OF 1