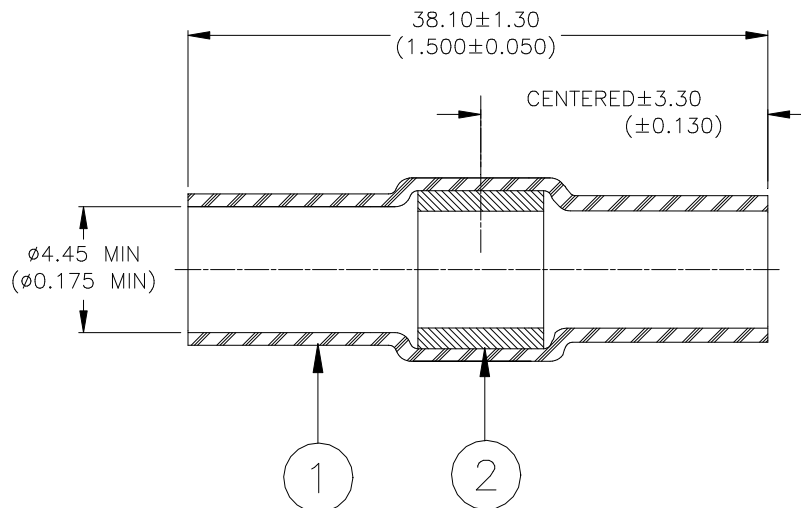


CUSTOMER DRAWING



MATERIALS

1. **INSULATION SLEEVE:** Heat-shrinkable, transparent blue, radiation cross-linked modified polyvinylidene fluoride.
Recovered I.D.: 1.90 (0.075) max.
2. **SOLDER PREFORM WITH FLUX:**
SOLDER: TYPE Sn63 per ANSI-J-STD-006.
FLUX: TYPE ROM1 per ANSI-J-STD-004.

APPLICATION

1. This part is designed to make a non-sealed in-line splice in conductors.
 Splice Criteria:
 Conductor Type: Bare or Tin plated copper
 Circular Mil Range: 3600 to 6000
 Insulation Diameter: 1.90 to 4.50 (0.075 to 0.175)
2. Wires are to be stripped 19.0 to 25.40 (0.75 to 1.00) overlapped under the solder preform.
3. Part may be installed with Tyco Electronics/Raychem approved hot-air or infrared heaters.
4. Part will meet requirements of Tyco Electronics/Raychem Specification RT-1404.

TE Connectivity		TITLE: SOLDERSLEEVE WIRE SPLICE IN-LINE, NON SEALED	
Unless otherwise specified dimensions are in millimeters. [Inches dimensions are shown in brackets]		Raychem Devices	
TOLERANCES: 0.00 N/A 0.0 N/A 0 N/A		Tyco Electronics Corporation reserves the right to amend this drawing at any time. Users should evaluate the suitability of the product for their application.	
ANGLES: N/A ROUGHNESS IN MICRON		REV: <div style="text-align: center; font-weight: bold; font-size: 1.2em;">B</div>	
PREPARED BY: YNGUYEN		DATE: <div style="text-align: center; font-weight: bold; font-size: 1.2em;">April 4, 2011</div>	
CAGE CODE: 06090		ECO NUMBER: ECO-11-006942	
SCALE: NTS		SIZE: A	
SHEET: 1 of 1			

© 2001- 2011 Tyco Electronics Corporation. All rights reserved.

If this document is printed it becomes uncontrolled. Check for the latest revision.