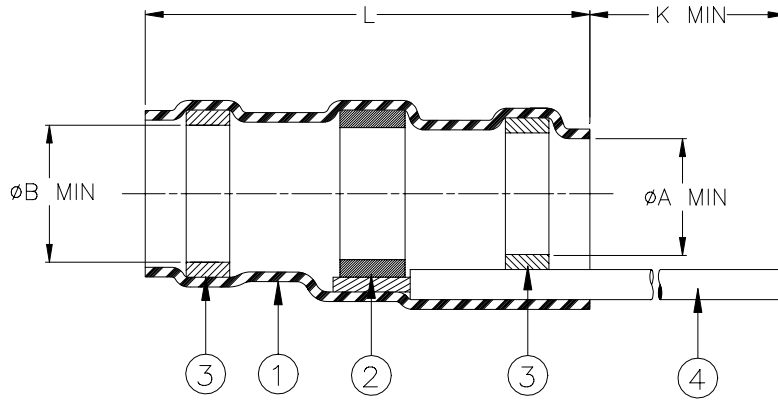


## SPECIFICATION CONTROL DRAWING



Product Revision		Product Dimensions				Cable Dimensions		
Product Name		L ±0.8 (0.031)	øA min	øB min	K min	øD max	øE min	J ±0.5 (J ±0.02)
D-146-0206	D	15.00 (0.591)	2.80 (0.106)	3.20 (0.125)	150 (5.910)	2.80 (0.106)	0.90 (0.035)	7.00 (0.275)
D-146-0207	D	15.00 (0.591)	4.60 (0.181)	5.10 (0.200)	150 (5.910)	4.60 (0.181)	1.80 (0.070)	7.00 (0.275)
D-146-0208	D	15.00 (0.591)	7.10 (0.280)	7.60 (0.300)	150 (5.910)	7.10 (0.280)	3.60 (0.142)	7.00 (0.275)

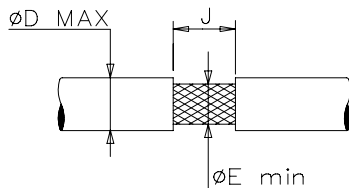
### MATERIALS

- INSULATION SLEEVE: Heat-shrinkable, transparent blue, radiation cross-linked modified polyvinylidene fluoride.
- SOLDER PREFORM WITH FLUX:  
 SOLDER: TYPE Sn63 per ANSI-J-STD-006.  
 FLUX: TYPE ROL1 per ANSI-J-STD-004.
- MELTABLE RINGS: Thermally stabilized thermoplastic. Color: blue.
- GROUND LEAD: Raychem 55A0811-22 in accordance with MIL-W-22759/34 AWG 22 stranded tin plated copper.  
 Marked: SHLD JMPR22.

### APPLICATION

- These parts are designed to provide an environment protected shield termination on cables, rated for 125°C minimum, meeting the dimensional criteria listed, having tin or silver plated copper shields.
- Temperature range: -55°C to +150°C.  
 Install using Raychem-approved convection or infrared heating tools in accordance with Raychem process standard RCPS-100-70.

For best results, prepare the cable as shown:



\* A trademark of Raychem Corporation.

<b>Raychem</b>		THERMOFIT DEVICES		Raychem Corporation 300 Constitution Drive Menlo Park, CA 94025 USA		TITLE: <b>SOLDERSLEEVE* DEVICE WITH PRE-INSTALLED LEAD</b>			
UNLESS OTHERWISE SPECIFIED DIMENSIONS ARE IN MILLIMETERS. INCHES DIMENSIONS ARE BETWEEN BRACKETS.						DOCUMENT NO.: <b>D-146-020X</b>			
TOLERANCES: 0.00 N/A 0.0 N/A 0 N/A		ANGLES: N/A ROUGHNESS IN MICRON		Raychem reserves the right to amend this drawing at any time. Users should evaluate the suitability of the product for their application.		DCR NUMBER: D981998	REPLACES: D980570		
DRAWN BY: M. FORONDA		DATE: 11/24/98		PROD. REV. SEE TABLE		DOC ISSUE: 2	SCALE: None	SIZE: A	SHEET: 1 of 1

If this document is printed it becomes uncontrolled. Check for the latest revision