

MODEL NUMBER
TRM-2107-MC-TNC-02

NOTES:

1.0 ELECTRICAL SPECIFICATIONS:

1.1 FREQUENCY RANGE: DC TO 12.4GHZ

1.2 INPUT POWER:

1.2.1 AT +25°C: 2 WATTS MAX.

1.2.2 AT +125°C: .05 WATTS MAX.

1.3 VSWR:

1.3.1 DC to 8.0GHZ: 1.20:1 MAX.

1.3.2 8.0 to 12.4GHZ: 1.25:1 MAX

1.4 IMPEDANCE: 50 OHMS

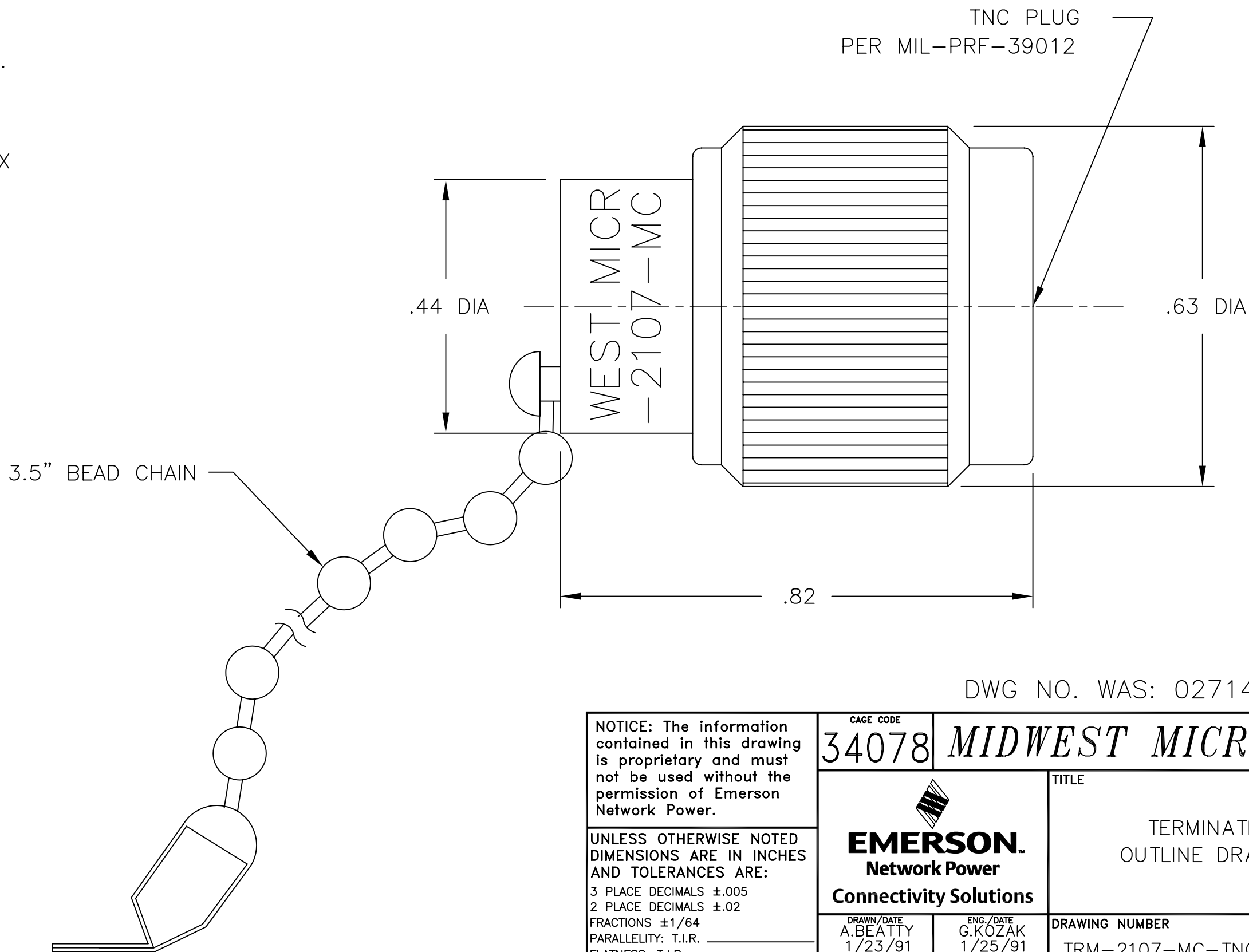
1.5 OPERATING TEMP. RANGE:

-55°C to +125°C

2.0 MARKING:

2.1 MARK UNIT AS SHOWN:

(REF: INK-02729-27-04)



DWG NO. WAS: 02714-01-00

NOTICE: The information contained in this drawing is proprietary and must not be used without the permission of Emerson Network Power.		CAGE CODE 34078	MIDWEST MICROWAVE	
UNLESS OTHERWISE NOTED DIMENSIONS ARE IN INCHES AND TOLERANCES ARE: 3 PLACE DECIMALS ±.005 2 PLACE DECIMALS ±.02 FRACTIONS ±1/64 PARALLELITY: T.I.R. _____ FLATNESS: T.I.R. _____ CONCENTRICITY: T.I.R. _____ ANGLES AND PERPENDICULARITY: ±1'				TITLE TERMINATION OUTLINE DRAWING
DRAWN/DATE A.BEATTY 1/23/91	ENG./DATE G.KOZAK 1/25/91	DRAWING NUMBER TRM-2107-MC-TNC-02-01		REV. M
CHECKED/DATE D.ESTY 1/24/91	APPROVED/DATE	SCALE: 5=1	SHEET 1 of 1	

REV.	DESCRIPTION	DATE
-	RELEASED	1/26/97
A	ECR 1233	6/29/81
B	ECR 6545	6/30/89
B1	CORP. TITLE	12/31/89
C	ECR 7129	2/20/89
D	REDRAW ADD SPECS.	1/23/91
D1	CORP F.C FROM 10 TO 02	6/10/91
E	ECN 11006	9/12/91
F	ECN 12202	11/9/92
G	ECN 12918	9/9/93
G1	ADDED TITLEBLOCK	11/2/05
M	ECO 23234	1/24/11