

Print and SMD Switch Short Stroke 11.4 mm



SMS with Gullwing lead, IP40



SMS with adapter and elongated button, J-lead

See below:
[Approvals and Compliances](#)

Description

- Switches are possible with different heights
- High-quality gold and silver contacts
- Solder terminals

Unique Selling Proposition

- Reliable tactile feedback on input
- Simple assembly
- Long life time

Characteristics

- IEC/UL 60950

Weblinks

[html-datasheet](#), [General Product Information](#), [CAD-Drawings](#), [Product News](#), [Detailed request for product](#)

Technical Data

Electrical Data

Switching Voltage	30 VAC/ 42 VDC
Switching Current	50 mA
Rated Switching Capacity	0.12 W
Lifetime	> 1 million actuations at Rated Switching Capacity
Contact Resistance	< 50mΩ < 150 mΩ after lifetime
Insulation Resistance	> 100 MΩ
Duration of Bounce	typ. 0.15 ms

Mechanical Data

Actuating Force	IP 40: 1.8 ± 0.4 N IP 67: 2.2 ± 0.4 N
Actuating Travel	0.35 ± 0.1 mm
End Stop Strength	< 100 N
Lifetime	> 1 million actuations

Climatical Data

Operating Temperature	-40°C to 85°C
Storage Temperature	-40°C to 85°C
IP-Protection	IP 40 and IP 67

Soldering Data

Soldering Methods	Reflow
Solderability	245°C / 5 sec (IEC 60068-2-58 Test Td)
Resistance to Soldering Heat	260°C / 10 sec (IEC 60068-2-58 Test Td)

Material

Sealing membrane IP 67	VMQ
Contact Material Gold	CuZn37 1.5 μm Ni 0.5 μm Au
Terminals	CuZn37 8 μm SnPb
Socket	Thermoplastic (PA 4.6)
Actuator	Thermoplastic (PPS)
Cover of Actuator	X 12 CrNi 17 7
Elongated Button	Thermoplastic (PC)

Approvals and Compliances

Detailed information on product approvals, code requirements, usage instructions and detailed test conditions can be looked up in [Details about Approvals](#)




Application standards

Application standards where the product can be used

Organization	Design	Standard	Description
	Designed for applications acc.	IEC/UL 60950	IEC 60950-1 includes the basic requirements for the safety of information technology equipment.

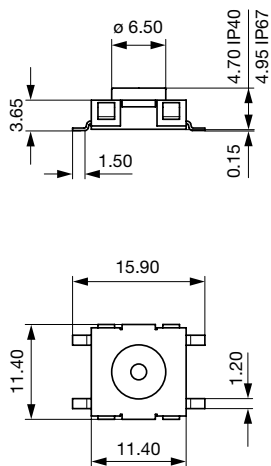
Compliances

The product complies with following Guide Lines

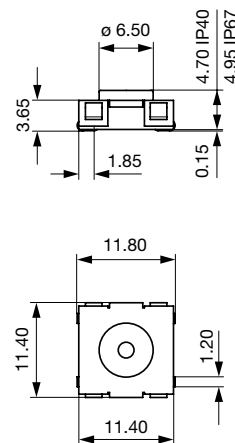
Identification	Details	Initiator	Description
	RoHS	SCHURTER AG	EU Directive RoHS 2011/65/EU
	China RoHS	SCHURTER AG	The law SJ / T 11363-2006 (China RoHS) has been in force since 1 March 2007. It is similar to the EU directive RoHS.
	REACH	SCHURTER AG	On 1 June 2007, Regulation (EC) No 1907/2006 on the Registration, Evaluation, Authorization and Restriction of Chemicals 1 (abbreviated as "REACH") entered into force.

Dimension [mm]

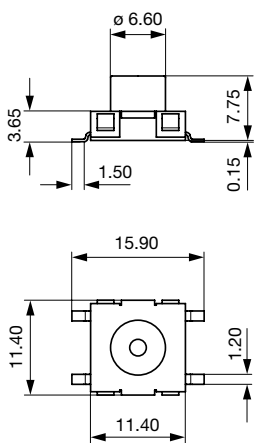
SMS Gullwing Base module



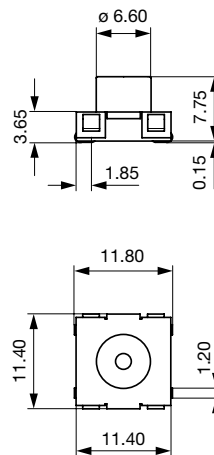
SMS J-lead Base module



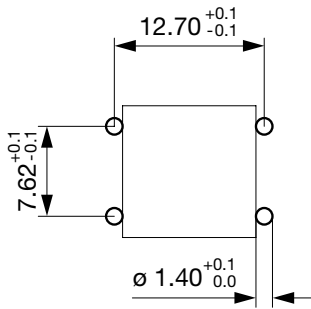
SMS Gullwing Variable height



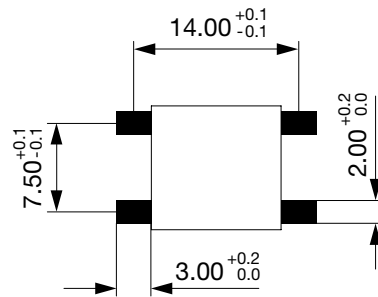
SMS J-lead Variable height



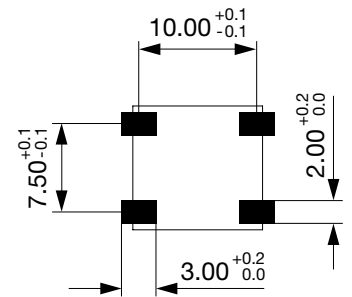
PCP Lead



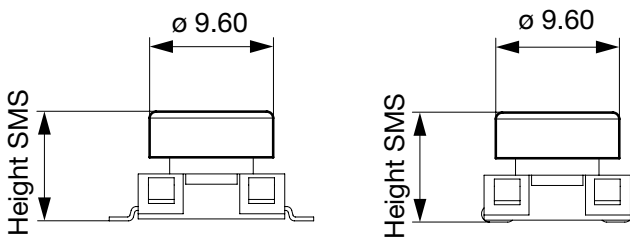
Gullwing Lead



J-Lead

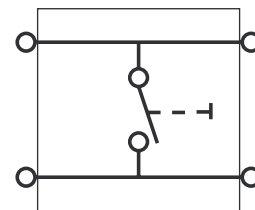
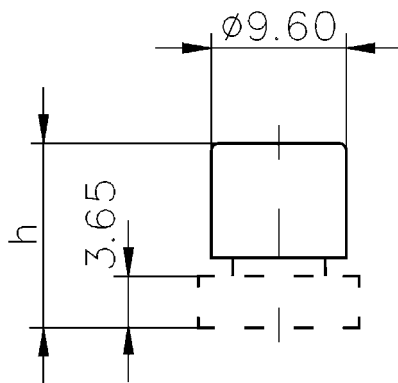


SMS Gullwing with elongated button SMS J lead with elongated button



Diagrams

Circuit Diagram SMS/PMS



All Variants

IP Protection Class Front Side	Terminal	Type	Overall height / Color	Order Number
IP 40	Gullwing	Short actuator	-	1241.1600.11
IP 40	Gullwing	Short actuator	-	1241.1600.23
IP 40	Gullwing	Long actuator	-	1241.1612.11
IP 40	Gullwing	Long actuator	-	1241.1612.23
IP 40	J-Lead	Short actuator	-	1241.1601.11

IP Protection Class Front Side	Terminal	Type	Overall height / Color	Order Number
IP 40	J-Lead	Short actuator	-	1241.1601.23
IP 40	J-Lead	Long actuator	-	1241.1613.11
IP 40	J-Lead	Long actuator	-	1241.1613.23
IP 67	Gullwing	Short actuator	-	1241.1606.11
IP 67	Gullwing	Short actuator	-	1241.1606.23
IP 67	Gullwing	Long actuator	-	1241.1618.11
IP 67	Gullwing	Long actuator	-	1241.1618.23
IP 67	J-Lead	Short actuator	-	1241.1607.11
IP 67	J-Lead	Short actuator	-	1241.1607.23
IP 67	J-Lead	Long actuator	-	1241.1619.11
IP 67	J-Lead	Long actuator	-	1241.1619.23
-	-	Elongated button	8.50 mm / yellow	0862.8101
-	-	Elongated button	9.25 mm / orange	0862.8102
-	-	Elongated button	10.00 mm / red	0862.8103
-	-	Elongated button	10.75 mm / blue	0862.8104
-	-	Elongated button	11.50 mm / green	0862.8105
-	-	Elongated button	12.25 mm / grey	0862.8106
-	-	Elongated button	13.00 mm / black	0862.8107
-	-	Elongated button	13.75 mm / white	0862.8108
-	-	Second elongated button	-	0862.8226

Availability for all products can be searched real-time: <https://www.schurter.com/en/Stock-Check/Stock-Check-SCHURTER>

Additional elongated button for long actuators must be ordered separately

From 14:50 mm an additional (second) elongated button for intermediate sizes (h + 6 mm) is required. This must be ordered separately

Packaging unit	
	.xx = .11 loose in boxes (100 pcs.)
	.xx = .23 Blister Tape 33 cm Reel for short actuator (700 pcs.)
	.xx = .23 Blister Tape 33 cm Reel for long actuator (450 pcs.)