

NCS6415DWEVB

NCS6415 Evaluation Board Manual



ON Semiconductor®

<http://onsemi.com>

Description

This document describes NCS6415 SOIC-20WB package evaluation board. It should be used in conjunction with the data sheet, which contains full technical details on the device specification and operation. This evaluation board is offered as a convenience for the customers interested in performing their own engineering characterization and performance assessment. The evaluation board provides a 75 Ω controlled impedance environment. The evaluation board is designed to facilitate a quick evaluation of the device.

This evaluation board manual contains information on NCS6415DEVB: Evaluation Board for NCS6415 Video Switch.

Board Layout

The SOIC-20WB package evaluation board is implemented in four layers (Figure 1, Evaluation Board

Layout). The first layer contains the device and other components. The second layer is the copper ground plane. The third layer is the power plane. The fourth layer is the soldering side for through-hole components.

Board Design (NCS6415DWEVB)

The evaluation board contains 8 inputs and 6 outputs (See Figure 2). The input contains termination resistor (typically 75 Ω for video application). The evaluation board contains an external transistor to drive a typical 150 Ω video load (75 Ω is series to the output). There are two power supplies voltages that can be provided on this board (one for the device and the other for the external drivers). For testing convenience, a jumper is provided to short the two power supplies on the board, if only one power supply is available.

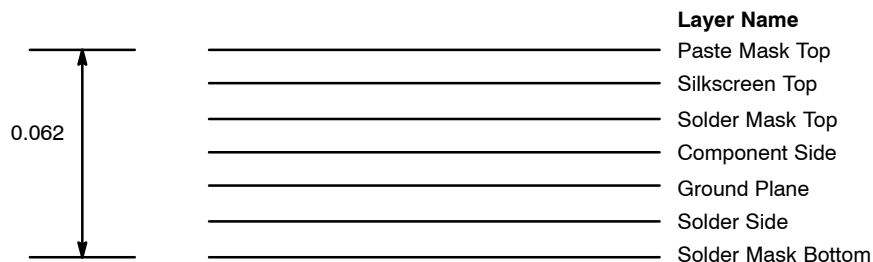


Figure 1. Evaluation Board Layout

NCS6415DWEVB

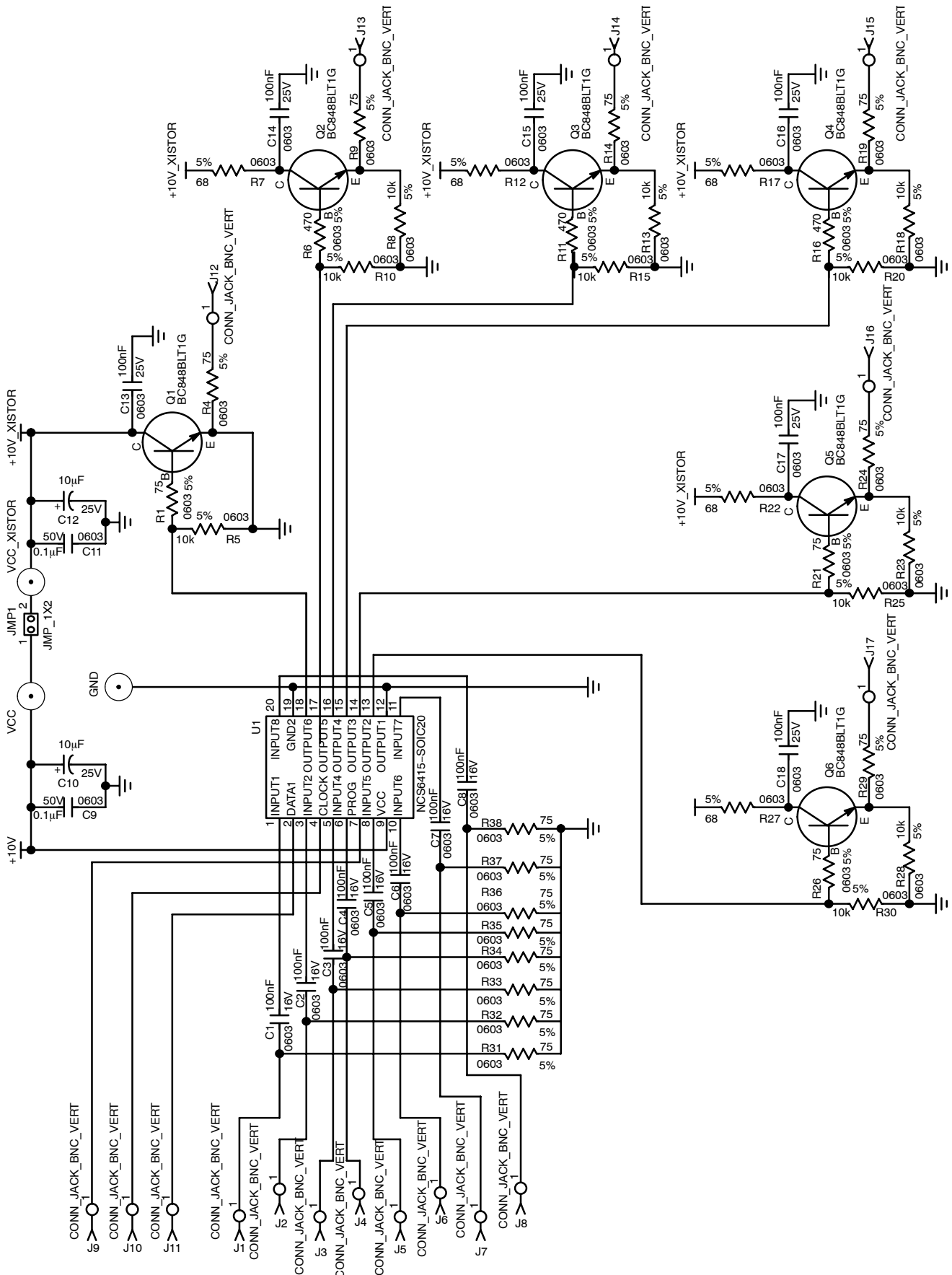


Figure 2. NCS6415 Evaluation Board Schematic

NCS6415DWEVB

BOARD LAYOUT (NCS6415EVB)

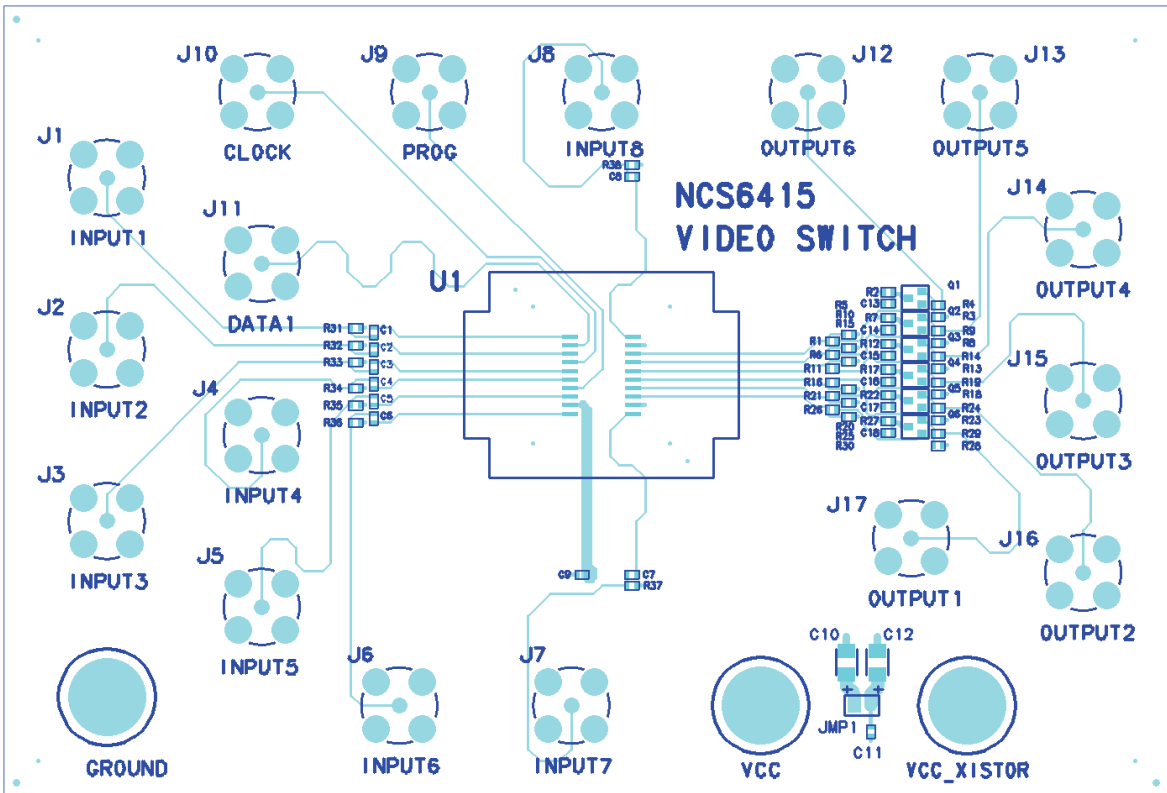



Figure 3. NCS6415EVB Evaluation Board (Top View)

NCS6415DWEVB

APPENDIX (Assembled Board BOM for NCS6415)

Item	Part Description	Manufacturer	Manufacturer Part Number	QTY/ Unit	Reference Designators
1	General Purpose NPN Transistor	ON Semiconductor	BC848BLT1G	6	Q1, Q2, Q3, Q4, Q5, Q6
2	Video Switch	ON Semiconductor	NCS6415DWG	1	U1
3	Connector, Jack BNC, Verticle 50 – PCB	AMP/TYCO	5414305-1	17	J1, J2, J3, J4 , J5, J6, J7, J8, J9, J10, J11, J12, J13, J14, J15, J16, J17
4	Connector, Banana Jack, Panel Mount	JOHNSON COMPONENTS, INC.	108-0740-001	3	GROUND, V _{CC} , VCC_XISTOR
5	(Tie IC and NPN Power Together with Jumper)	-	JUMPER	1	JMP1
6	CAP SM CER 0603 100 NF 50 V 10% X7R	SAMSUNG	CL10B104KBNC	16	C1, C2, C3, C4, C5, C6, C7, C8, C9, C11, C13, C14, C15, C16, C17, C18
7	RES 75 Ω 1/10 W 5% 0603 SMD	SAMSUNG	RC1608J750CS	14	R4, R9, R14, R19, R24, R29, R31, R32, R33, R34, R35, R36, R37
8	TANT CAP 10 μF 16 V 10% -55/85°C PKG. 0805	VISHAY	292D106X9016P2T	2	C10, C12
9	RES 10 KΩ 1/10 W 5%, PKG. 0603	SAMSUNG	RC1608J103CS	12	R3, R5, R8, R10, R13, R15, R18, R20, R23, R25, R28, R30
10	RES 68 Ω 1/10 W 5% PKG.0603	VISHAY	CRCW06038R0JNEA	6	R2, R7, R12, R17, R22, R27
11	RES 470 1/10 W 5% PKG.0603	VISHAY	CRCW0603470RJNEA	6	R1, R6, R11, R16, R21, R26

ON Semiconductor and  are registered trademarks of Semiconductor Components Industries, LLC (SCILLC). SCILLC reserves the right to make changes without further notice to any products herein. SCILLC makes no warranty, representation or guarantee regarding the suitability of its products for any particular purpose, nor does SCILLC assume any liability arising out of the application or use of any product or circuit, and specifically disclaims any and all liability, including without limitation special, consequential or incidental damages. "Typical" parameters which may be provided in SCILLC data sheets and/or specifications can and do vary in different applications and actual performance may vary over time. All operating parameters, including "Typicals" must be validated for each customer application by customer's technical experts. SCILLC does not convey any license under its patent rights nor the rights of others. SCILLC products are not designed, intended, or authorized for use as components in systems intended for surgical implant into the body, or other applications intended to support or sustain life, or for any other application in which the failure of the SCILLC product could create a situation where personal injury or death may occur. Should Buyer purchase or use SCILLC products for any such unintended or unauthorized application, Buyer shall indemnify and hold SCILLC and its officers, employees, subsidiaries, affiliates, and distributors harmless against all claims, costs, damages, and expenses, and reasonable attorney fees arising out of, directly or indirectly, any claim of personal injury or death associated with such unintended or unauthorized use, even if such claim alleges that SCILLC was negligent regarding the design or manufacture of the part. SCILLC is an Equal Opportunity/Affirmative Action Employer. This literature is subject to all applicable copyright laws and is not for resale in any manner.

PUBLICATION ORDERING INFORMATION

LITERATURE FULFILLMENT:
Literature Distribution Center for ON Semiconductor
P.O. Box 5163, Denver, Colorado 80217 USA
Phone: 303-675-2175 or 800-344-3860 Toll Free USA/Canada
Fax: 303-675-2176 or 800-344-3867 Toll Free USA/Canada
Email: orderlit@onsemi.com

N. American Technical Support: 800-282-9855 Toll Free
USA/Canada
Europe, Middle East and Africa Technical Support:
Phone: 421 33 790 2910
Japan Customer Focus Center
Phone: 81-3-5773-3850

ON Semiconductor Website: www.onsemi.com
Order Literature: <http://www.onsemi.com/orderlit>

For additional information, please contact your local Sales Representative