

5	6	7	8
COUNT	DESCRIPTION OF REVISIONS	BY	CHKD

5	6	7	8
COUNT	DESCRIPTION OF REVISIONS	BY	CHKD

5	6	7	8
COUNT	DESCRIPTION OF REVISIONS	BY	CHKD

5	6	7	8
COUNT	DESCRIPTION OF REVISIONS	BY	CHKD

5	6	7	8
COUNT	DESCRIPTION OF REVISIONS	BY	CHKD

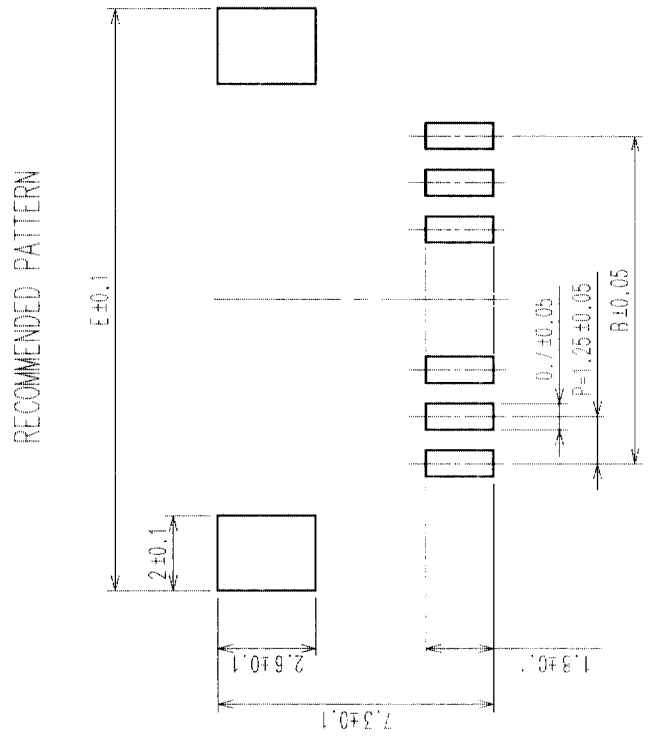
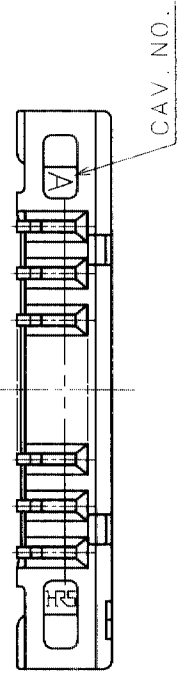
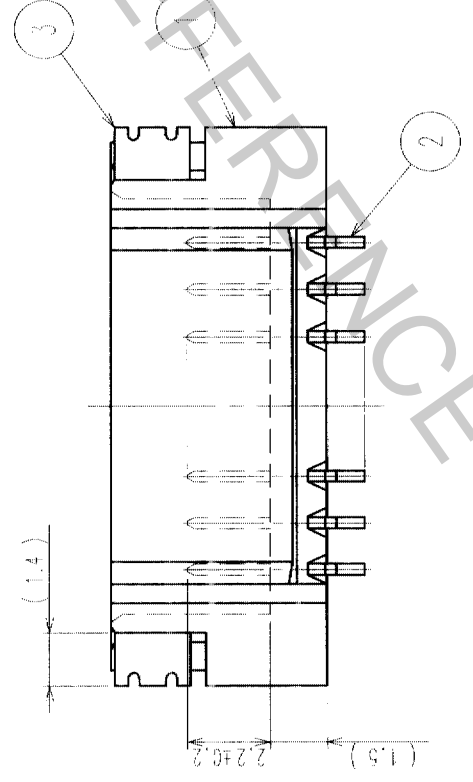
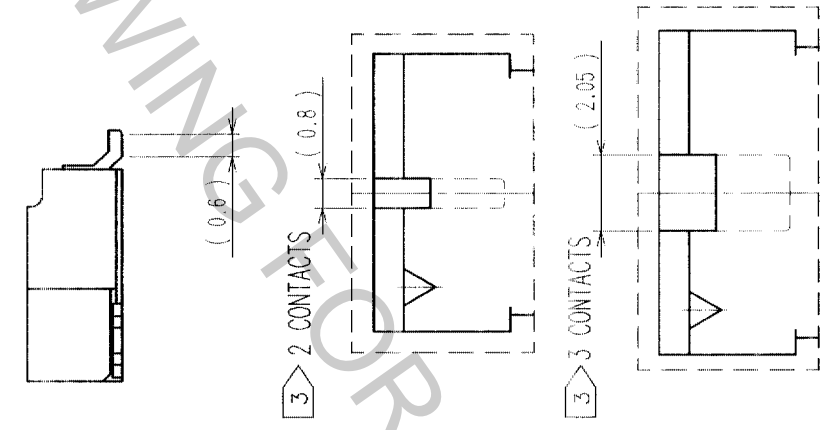
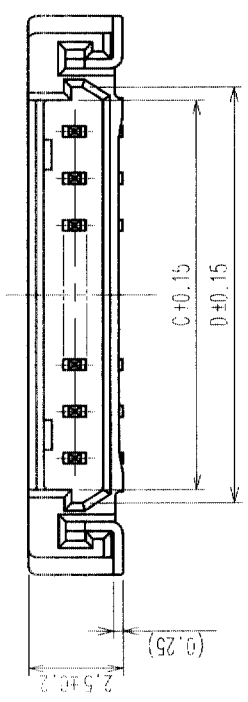
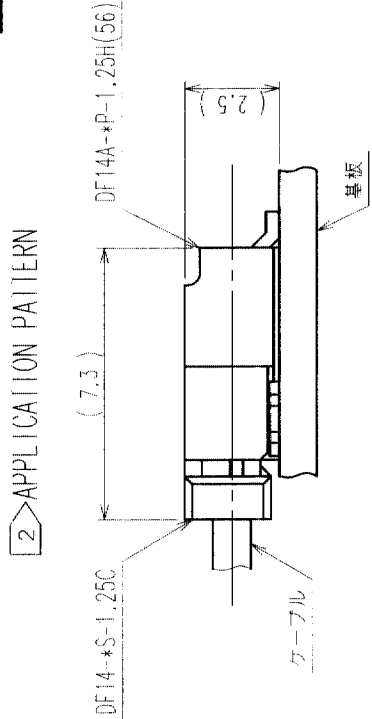
5	6	7	8
COUNT	DESCRIPTION OF REVISIONS	BY	CHKD

5	6	7	8
COUNT	DESCRIPTION OF REVISIONS	BY	CHKD

5	6	7	8
COUNT	DESCRIPTION OF REVISIONS	BY	CHKD

5	6	7	8
COUNT	DESCRIPTION OF REVISIONS	BY	CHKD

5	6	7	8
COUNT	DESCRIPTION OF REVISIONS	BY	CHKD



NOTE 1. LEAD CO-PLANALITY INCLUDE REINFORCED METAL FITTINGS SHALL BE 0.1 MAX.
 2. WHEN THIS CONNECTOR MATES WITH DF14-S-1.25C, THE MATTING LENGTH IS 7.3mm.
 3. FOR CONNECTORS, 2 OR 3 CONTACTS, SIMPLIFIED LOCK HOLE SHALL BE SET AT THE CENTER OF HOUSING.

5	6	7	8
COUNT	DESCRIPTION OF REVISIONS	BY	CHKD

5	6	7	8
COUNT	DESCRIPTION OF REVISIONS	BY	CHKD

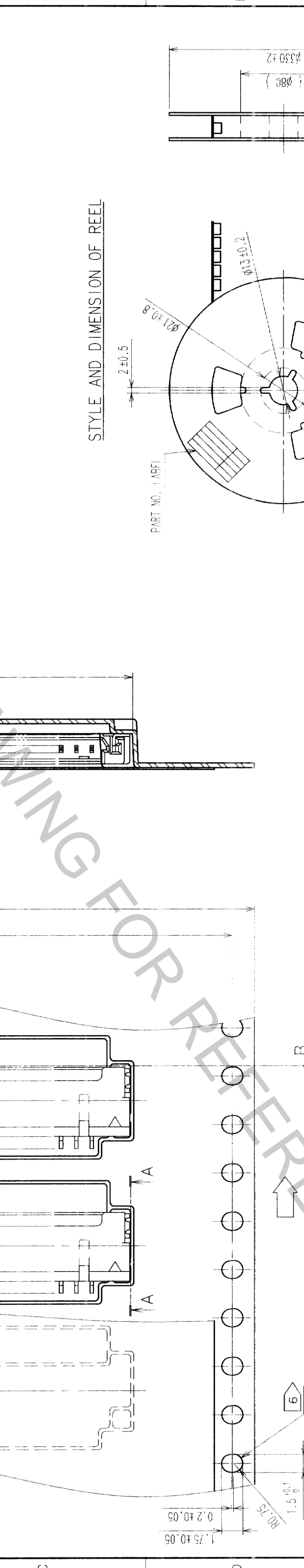
5	6	7	8
COUNT	DESCRIPTION OF REVISIONS	BY	CHKD

5	6	7	8
COUNT	DESCRIPTION OF REVISIONS	BY	CHKD

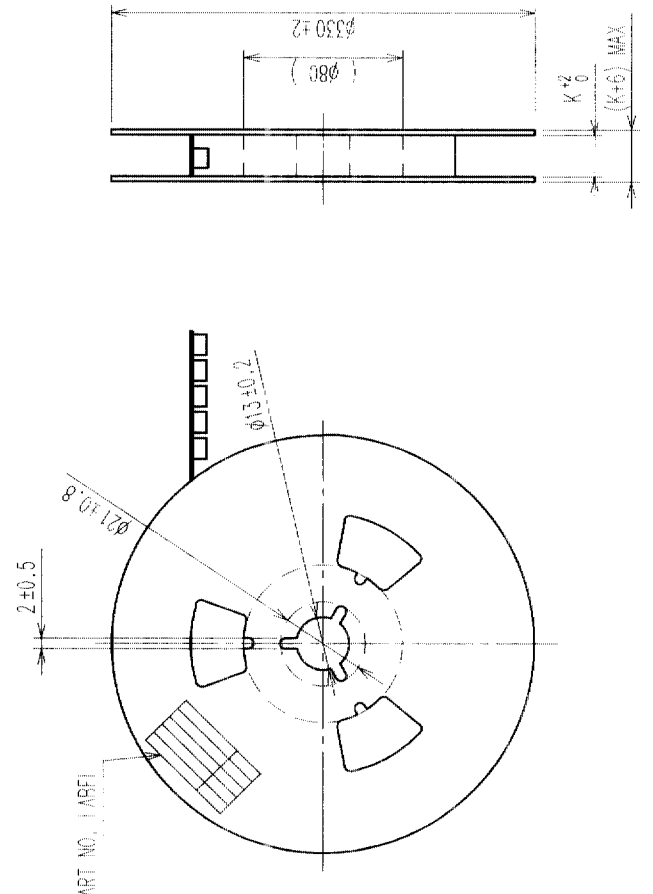
5	6	7	8
COUNT	DESCRIPTION OF REVISIONS	BY	CHKD

COUNT	DESCRIPTION OF REVISIONS	BY	CHKD	DATE	COUNT	DESCRIPTION OF REVISIONS	BY	CHKD	DATE
1					1				
2					2				
3					3				
4					4				
5					5				

PART NO.	CONTACTS	F	G	H	J	K
DF14A-2P-1.25H(56)	2	7.5	-	16	7.85	16.4
DF14A-3P-1.25H(56)	3	7.5	-	16	9.1	16.4
DF14A-4P-1.25H(56)	4	11.5	-	24	10.35	24.4
DF14A-5P-1.25H(56)	5	11.5	-	24	11.6	24.4
DF14A-6P-1.25H(56)	6	11.5	-	24	12.85	24.4
DF14A-7P-1.25H(56)	7	11.5	-	24	14.1	24.4
DF14A-8P-1.25H(56)	8	11.5	-	24	15.35	24.4
DF14A-9P-1.25H(56)	9	11.5	-	24	16.6	24.4
DF14A-10P-1.25H(56)	10	11.5	-	24	17.85	24.4
DF14A-15P-1.25H(56)	15	20.2	40.4	44	24.1	44.4
DF14A-20P-1.25H(56)	20	20.2	40.4	44	30.35	44.4
DF14A-25P-1.25H(56)	25	26.2	52.4	56	36.6	56.4
DF14A-30P-1.25H(56)	30	26.2	52.4	56	42.85	56.4



STYLE AND DIMENSION OF REEL



SUPPLIER QUANTITY PART NO. CODE NO. DATE OF MANUFACTURED

生産月日	年	月	日
CLコード	538	-	-
品名	DF14A-P-1.25H(56)		
納入数量	1000個		
納入者	ヒロセ電機株式会社		

DETAIL OF PART NO. LABEL

生産月日	年	月	日
CLコード	538	-	-
品名	DF14A-P-1.25H(56)		
納入数量	1000個		
納入者	ヒロセ電機株式会社		

NOTE 4 1 REEL : 1000 CONNECTORS
 5 AT THE BEGINNING OF THE REEL , 30 COMPONENTS SHALL BE EMPTY .
 6 AT THE END OF THE REEL , 20 COMPONENTS SHALL BE EMPTY .
 WHEN THE TAPE WIDTH IS 44 TO 56mm , SPROCKET HOLES SHALL BE SET ON BOTH SIDES OF REEL AS SHOWN ON THIS DRAWING .

NO.	MATERIAL	FINISH, REMARKS	NO.	MATERIAL	FINISH, REMARKS
CODE NO. (OLD)	CL		DRAWN	DESIGNED	CHECKED
			<i>F. Mustaki</i>	<i>S. Saegusa</i>	<i>T. Miyajima</i>
			03.3.5	03.3.7	03.03.25
					03.03.25
DRAWING NO.	EDC3-160309-19		PART NO.	DF14A-P-1.25H(56)	
SCALE	FREE		CODE NO.	CL538-	
UNITS	mm				

HIROSE ELECTRIC CO., LTD.
HRS
 CL538-2