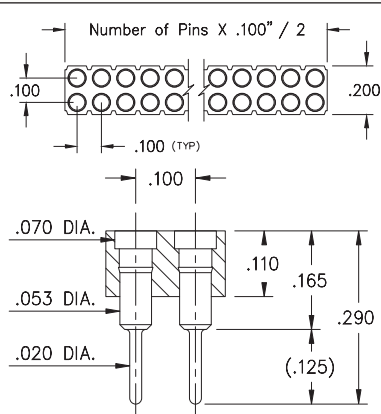
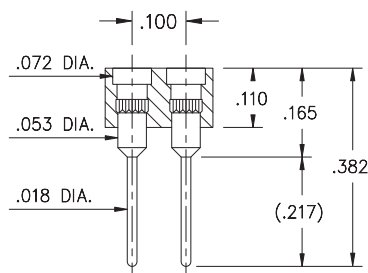


# SPRING-LOADED CONNECTORS

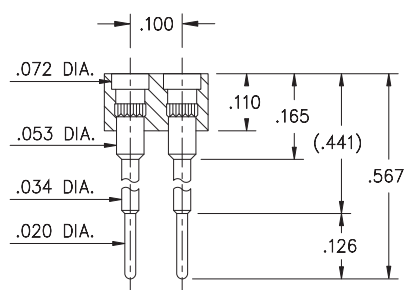
## SERIES 419, 430 • .100" GRID TARGET CONNECTORS FOR SPRING-LOADED ASSEMBLIES • DOUBLE ROW STRIPS



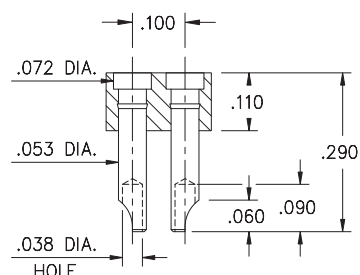
**FIG. 1**



**FIG. 2**

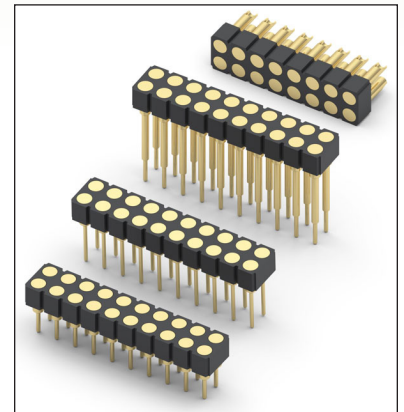


**FIG. 3**



**FIG. 4**

- Series 419 and 430 Spring Target Connectors, supplied in double row strips. Available in through-hole and wire termination configurations
- Target Connectors provide an excellent gold-plated conductive mating surface for spring loaded connectors. These series are offered with a flat face for making contact with our standard .042" dia. spring pin plungers
- Target connectors use MM #1938, #1940, #1942 and #3024 pins. See page 218 for details
- Insulators are high temperature thermoplastic



### ORDERING INFORMATION

|  | Series 419...001                        | Standard Solder Tails      |
|--|---|----------------------------|
| <b>FIG. 1</b>  | 419-10-2                                | -00-001000                 |
|  | Specify number of pins                  | 04-64                      |
|  | Series 419...002                        | Long Solder Tails          |
| <b>FIG. 2</b>  | 419-10-2                                | -00-002000                 |
|  | Specify number of pins                  | 04-64                      |
|  | Series 419...005                        | Elevated with Solder Tails |
| <b>FIG. 3</b>  | 419-10-2                                | -00-005000                 |
|  | Specify number of pins                  | 04-64                      |
|  | Series 430...240                        | Solder Cups                |
| <b>FIG. 4</b>  | 430-10-2                                | -00-240000                 |
|  | Specify number of pins                  | 04-64                      |
| <div style="display: flex; justify-content: space-around; align-items: center;"> <div style="border: 1px solid black; padding: 5px; background-color: #90EE90;">RoHS-2<br/>2011/65/EU</div> <div style="border: 1px solid black; border-radius: 50%; padding: 5px;">XX=Plating Code<br/>See Below</div> <div style="border: 1px solid black; border-radius: 50%; padding: 5px;">For<br/>Electrical, Mechanical<br/>&amp; Environmental Data,<br/>See page 264</div> </div> |   |                            |
| <b>SPECIFY PLATING CODE XX=</b>  |   |                            |
| Pin Plating  | 10 <span style="color: green;">◆</span> | 10 μ" Au                   |