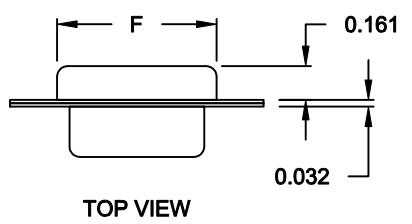
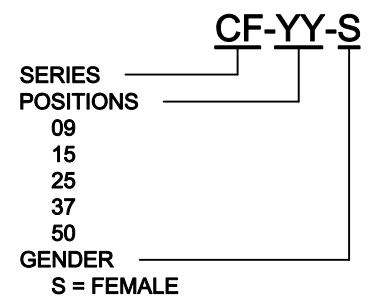
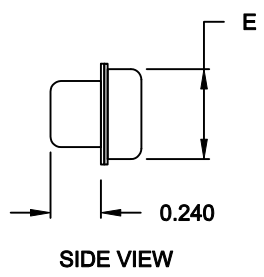
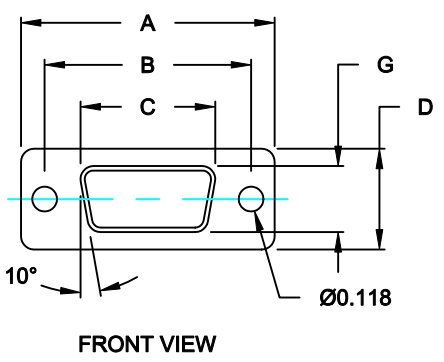


MATERIAL:
SHELL: STEEL, TIN PLATED

****NOTE: COVER IS USED TO COVER MALE CONNECTORS**



| No. OF PINS | DIMENSIONS (IN.) | | | | | | |
|-------------|------------------|-------|-------|-------|-------|-------|-------|
| | A | B | C | D | E | F | G |
| 9 | 1.205 | 0.984 | 0.642 | 0.480 | 0.429 | 0.760 | 0.315 |
| 15 | 1.535 | 1.311 | 0.969 | 0.480 | 0.429 | 1.083 | 0.315 |
| 25 | 2.079 | 1.850 | 1.512 | 0.480 | 0.429 | 1.630 | 0.315 |
| 37 | 2.724 | 2.500 | 2.157 | 0.480 | 0.429 | 2.278 | 0.315 |
| 50 | 2.622 | 2.406 | 2.059 | 0.598 | 0.535 | 2.182 | 0.433 |



DO NOT SCALE FROM DRAWING

| | | | | |
|----------------|---|---------------|-----------------|----------------|
| | THESE DRAWINGS AND SPECIFICATIONS ARE THE PROPERTY OF NorComp AND SHALL NOT BE REPRODUCED, COPIED OR USED AS THE BASIS FOR THE MANUFACTURE OF SALE OF APPARATUS WITHOUT WRITTEN PERMISSION. | | DRAWN: C. SMITH | DATE: 01-17-08 |
| | | | CHECKED: | DATE: |
| NorComp | | SCALE: 1:1 | SHEET 1 OF 1 | REV 2 |
| | | DWG NO. CFYYS | | |

RoHS COMPLIANT