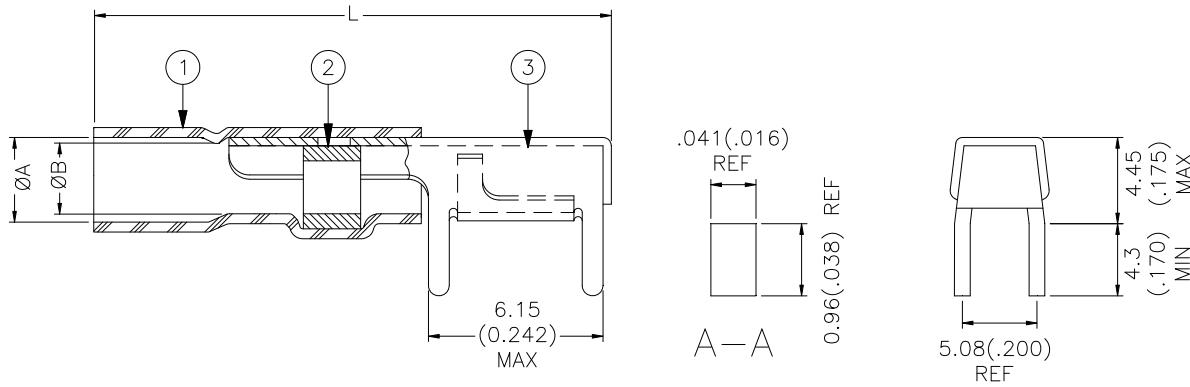


CUSTOMER DRAWING



Product Name	Product Dimensions			Cable Dimensions	
	L max	ØA min	ØB min	ØD	ØE ¹
D-607-10	24.0 (0.945)	4.0 (0.155)	2.8 (0.110)	1.8 to 4.0 (0.070 to 0.155)	1.9 to 2.8 (0.075 to 0.110)

1) Shield may be folded back over jacket to increase diameter.

MATERIALS

1. INSULATION SLEEVE: Heat-shrinkable, transparent blue, radiation cross-linked polyvinylidene fluoride.

2. SOLDER PREFORM WITH FLUX:

SOLDER: TYPE Sn63 per ANSI-J-STD-006.

FLUX: TYPE ROL1 per ANSI-J-STD-004.

3. TERMINATOR BODY BASE METAL: Copper alloy.

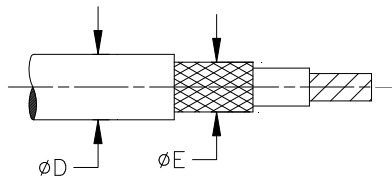
Plating: Tin lead solder per SAE Specification AMS-P-81728.

APPLICATION

1. These parts are designed to provide an environment protected shield termination on cables, rated for 125°C minimum, meeting the dimensional criteria listed, having tin, or silver plated copper shields.

2. Temperature range: -55°C to +150°C. Install using Raychem-approved convection or infrared tools in accordance with TE Connectivity assembly procedure ES-61139.

For best results, prepare the cable as shown:



			TITLE: PCB TERMINATOR		
Unless otherwise specified dimensions are in millimeters. [Inches dimensions are shown in brackets] DIMENSIONING AND TOLERANCING PER ASME Y14.5-2009			DOCUMENT NO.: D-607-10		
TOLERANCES: 0.00 N/A 0.0 N/A 0 N/A			Raychem Devices Tyco Electronics reserves the right to amend this drawing at any time. Users should evaluate the suitability of the product for their application.		
ANGLES: N/A ROUGHNESS IN MICRON			REV: H	DATE: September 20, 2012	
PREPARED BY: RODRIGUEZ	CAGE CODE: 06090	ECO NUMBER: ECO-12-016931	SCALE: NTS	SIZE: A	SHEET: 1 of 1

© 2007-2012 Tyco Electronics Corporation. All rights reserved.

If this document is printed it becomes uncontrolled. Check for the latest revision.