

## Y distributor - SAC-4P-M 8Y/2XM 8FS VP - 1572443

Please be informed that the data shown in this PDF Document is generated from our Online Catalog. Please find the complete data in the user's documentation. Our General Terms of Use for Downloads are valid (<http://download.phoenixcontact.com>)



Y distributor, 4-position, Plug straight M8, on Socket straight M8 and Socket straight M8

The illustration shows a 3-pos. version



### Key commercial data

Packing unit	1 1
Minimum order quantity	5 1
Weight per Piece (excluding packing)	12.0 GRM
Custom tariff number	85444290
Country of origin	Poland

### Technical data

#### Dimensions

Center distance	12 mm
-----------------	-------

#### Ambient conditions

Ambient temperature (operation)	-25 °C ... 90 °C (Plug / socket)
Degree of protection	IP65
	IP67

#### General

Rated current at 40°C	4 A
Rated voltage	30 V
Number of positions	4
Contact resistance	≤ 5 mΩ
Insulation resistance	≥ 10 GΩ
Coding	A - standard
Standards/regulations	M8 connector IEC 61076-2-104

## Y distributor - SAC-4P-M 8Y/2XM 8FS VP - 1572443

### Technical data

#### General

	M8 connector IEC 61076-2-104
Status display	No
Surge voltage category	II
Pollution degree	3
Insertion/withdrawal cycles	≥ 100
Torque	0.2 Nm

#### Material

Inflammability class according to UL 94	HB
Contact material	CuZn
Contact surface material	Ni/Au
Contact carrier material	TPU GF
Material of grip body	TPU, hardly inflammable, self-extinguishing
Material, knurls	Zinc die-cast, nickel-plated
Sealing material	NBR

### Classifications

#### eCl@ss

eCl@ss 4.0	27060306
eCl@ss 4.1	27060306
eCl@ss 5.0	27061801
eCl@ss 5.1	27061801
eCl@ss 6.0	27061801
eCl@ss 7.0	27061801
eCl@ss 8.0	27061801

#### ETIM

ETIM 3.0	EC001855
ETIM 4.0	EC001855
ETIM 5.0	EC001855

#### UNSPSC

UNSPSC 6.01	31251501
UNSPSC 7.0901	31251501
UNSPSC 11	31251501
UNSPSC 12.01	31251501
UNSPSC 13.2	31251501

# Y distributor - SAC-4P-M 8Y/2XM 8FS VP - 1572443

## Accessories

Accessories

Protective cap

Screw plug - PROT-M8 - 1682540



An M8 screw plug for the unoccupied M8 sockets of the sensor/actuator cable, boxes and flush-type connectors

---

## Screwdriver tools

Tool - SAC BIT M8-D10 - 1208461



Nut for assembling sensor/actuator cables with M8 connector and for M8 connectors with QUICKON fast connection technology, for 4 mm hexagonal drive

---

## Torque tool

Torque screwdriver - TSD 02 SAC - 1208487

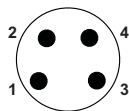


Torque screwdriver, with preset torque of 0.2 Nm and 4 mm hexagonal drive for M8 connectors

---

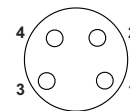
## Drawings

Schematic diagram



Pin assignment M8 plug, 4-pos., view male side

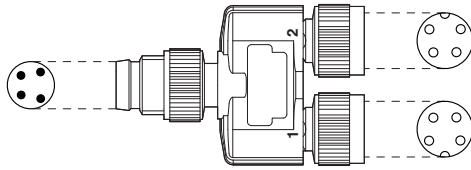
Schematic diagram



Pin assignment M8 socket, 4-pos., view female side

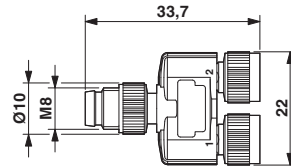
# Y distributor - SAC-4P-M 8Y/2XM 8FS VP - 1572443

Schematic diagram



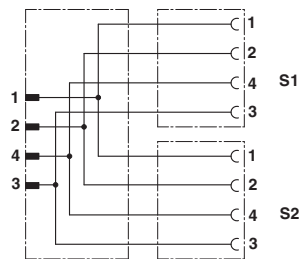
Layout of connector pin assignments

Dimensioned drawing



M8-Y distributor

Circuit diagram



Contact assignment of the M8 Y distributor