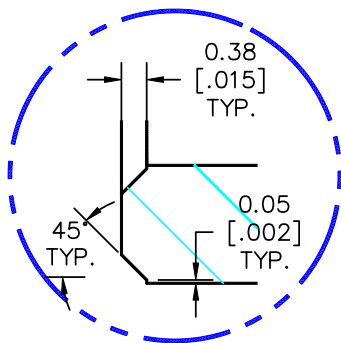


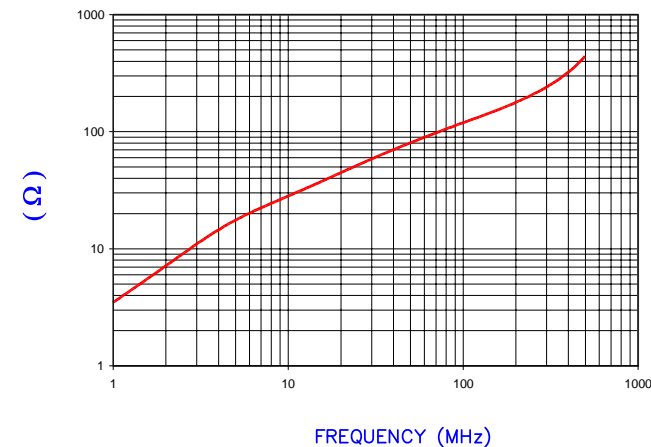
SECTION A-A



DETAIL A
SCALE: 6:1

IMPEDANCE (Z)			
Frequency	25 MHz	100 MHz	300 MHz
Nominal (REF)	53 Ω	119 Ω	240 Ω
Minimum	- Ω	95 Ω	- Ω

Z vs. FREQUENCY
(REF. ONLY)



AGILENT E4991A Impedance/Material Analyzer
HP 16092A Test Fixture

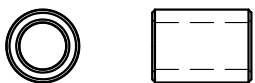
**UNCONTROLLED
DOCUMENT**

BARE DIMENSIONS

A	9.91 [.390]	±	0.20 [.008]
B	6.35 [.250]	±	0.15 [.006]
C	13.46 [.530]	±	0.25 [.010]

WEIGHT/1000 2.99 kgs 6.60 lbs

SCALE DRAWING 1:1



28B0390-000

DIMENSIONS ARE IN mm [INCHES].				THIS DOCUMENT CONTAINS INFORMATION WHICH IS PROPRIETARY AND CONFIDENTIAL TO STEWARD. NO PRODUCTION OR PUBLICATION OF THIS DOCUMENT IN WHOLE OR IN PART SHALL BE MADE WITHOUT WRITTEN AUTHORIZATION FROM STEWARD.			
F	UPDATE CURVE, Z SPECS, REM COATING SPECS CHANGE P/N FROM -00*	05/12/03	JRK	<h1>Steward</h1>			
E	UPDATE PRINT FORMAT ADD DETAILS UPDATE Z SPECS PER J.HOLT	02/22/02	JRK				
D	CHG P/N TO 00*, ADD COATING SPECS	03/31/99	I.S.	PROJECT/PART NUMBER:	REV	PART TYPE:	DRAWN BY:
C	UPDATED P/N FOR NEW CATALOG	11/17/95	JBE	28B0390-000	F	CNZ CORE	DJB
B	CHANGED L DIM ELECTRICAL	01/24/92	DJB	DATE:	SCALE:	MATERIAL:	
A	ORIGINAL DRAFT	04/01/91	DJB	04/01/91	3 : 1		
REV	DESCRIPTION	DATE	INT	CAD #	TOOL #		
				28B0390-000-F	B0390		STEWARD 28