

28C0236-0EW

STEWARD PART NUMBERING SYSTEM					
25	C	0236	- 0	D	W
MATERIAL TYPE	PRODUCT CODE	PART SIZE CODE	SELECTED DIMENSION CODE	ADDITIONAL DESCRIPTION	PACKAGING CODE

Ambient Operating Temperature Range : -55°C to + 125°C

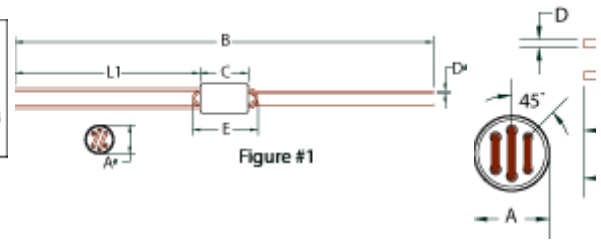


Figure #1

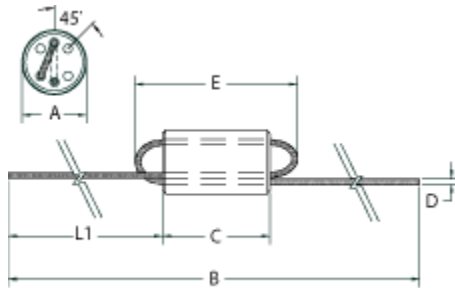


Figure #3

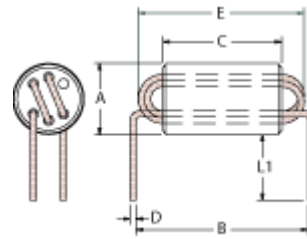


Figure #4

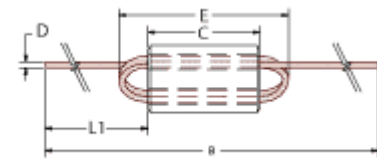


Figure #5

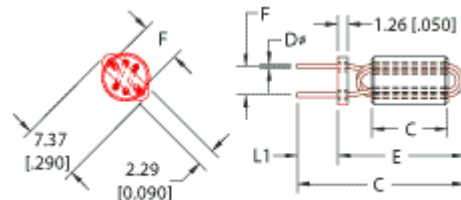


Figure #6

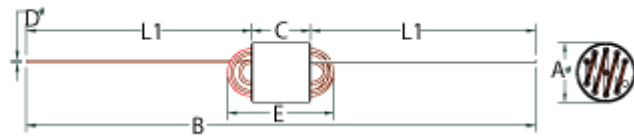


Figure #7

Drawing Figure

Figure Number
2

Electrical Characteristics

NET Z @ 100 MHz nom	NET Z @ 300 MHz nom	DCR Max
998	-	-

Physical Dimensions

A mm	B mm	C mm	D mm	E mm	F mm	L1 mm	A in	B in	C in	D in	E in	F in	L1 in
5.99	50.53	10.0	-	14.61	-	38.1	0.236	1.990	0.394	24 AWG TCW	0.575	-	1.50

