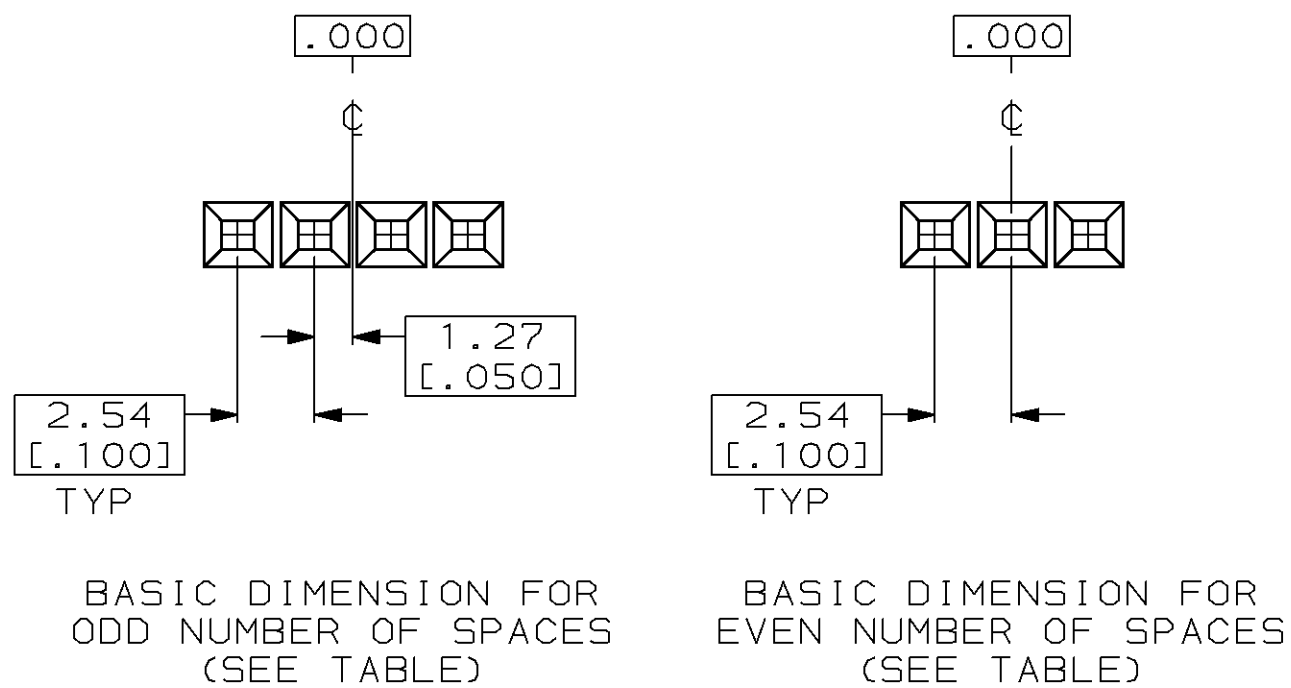


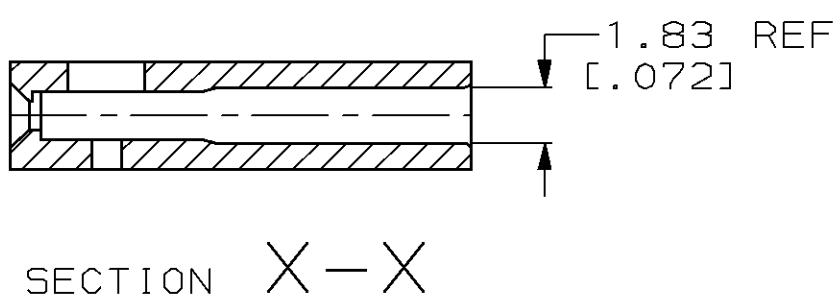
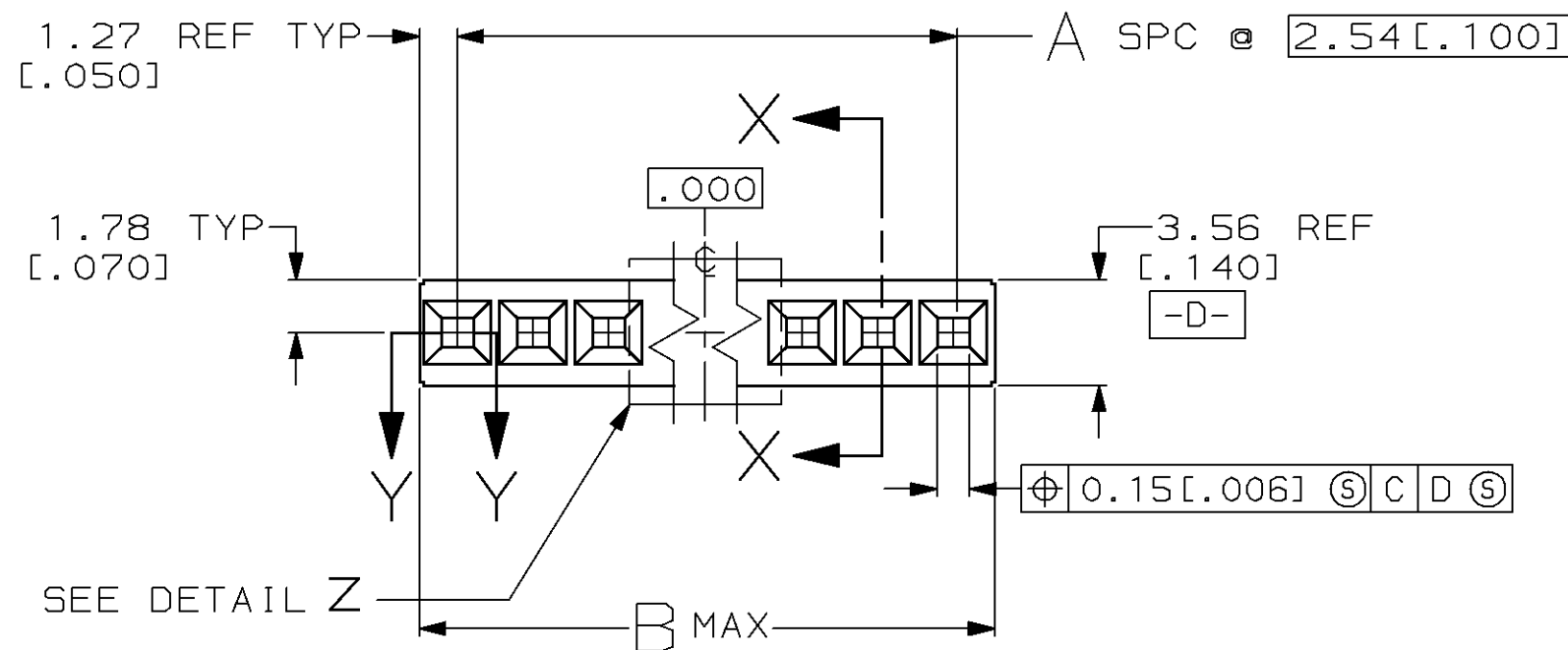
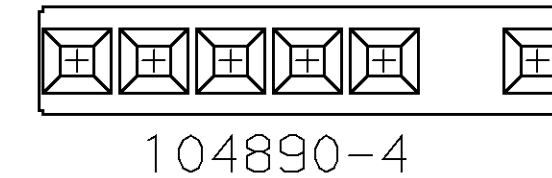
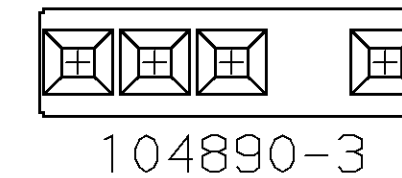
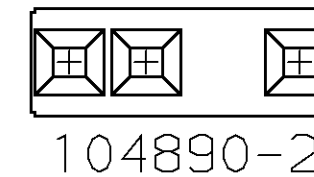
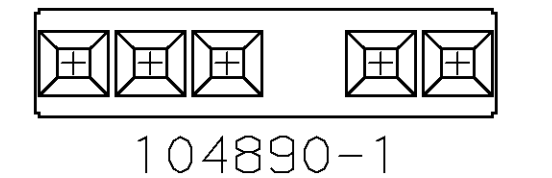
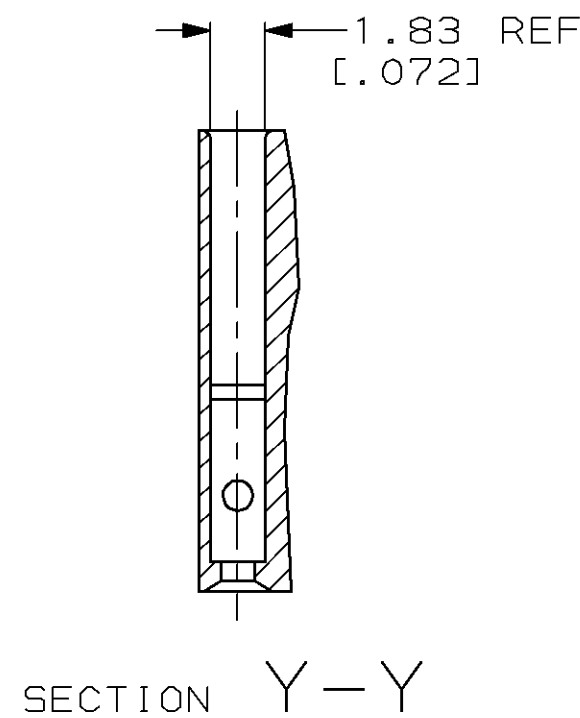
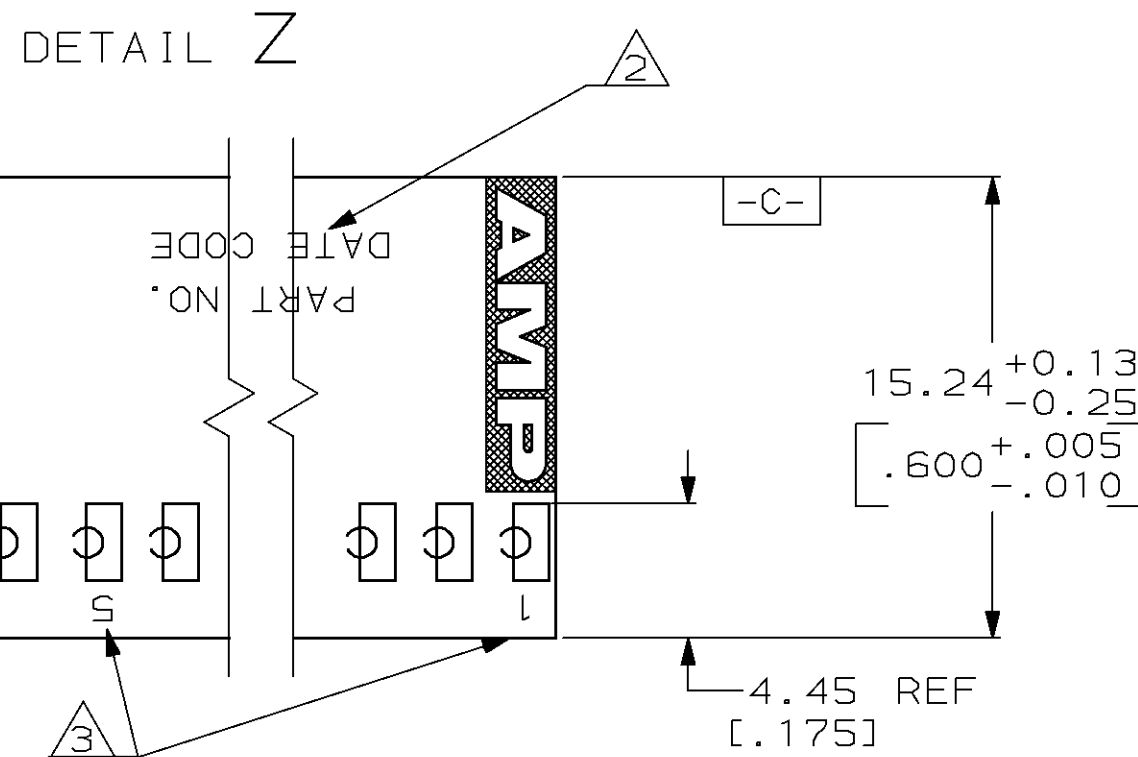
THIS DRAWING IS UNPUBLISHED. RELEASED FOR PUBLICATION .19
 © COPYRIGHT 19 BY AMP INCORPORATED. ALL INTERNATIONAL RIGHTS RESERVED.

MOD	Loc	DIST	P	F	ZONE	LTR	REVISIONS	DATE	APPD
30	AD	39				F	REV. PER 0310-0040-98	07/29/98	GB



BASIC DIMENSION FOR
ODD NUMBER OF SPACES
(SEE TABLE)

BASIC DIMENSION FOR
EVEN NUMBER OF SPACES
(SEE TABLE)



- USE EXTRACTION TOOL 91052-1 TO REMOVE RECEPTACLE CONTACTS.
- INK MARK PART NO. AND DATE CODE .062±.015 HIGH CHARACTERS, IN APPROXIMATE AREA SHOWN.
- INK MARK CAVITY IDENTIFICATION .046±.015 HIGH CHARACTERS, FIRST AND EVERY FIFTH CAVITY, ONE SIDE ONLY AS SHOWN.

NO. OF POSN	PART NUMBER	MARKING	UNMARKED IN PROCESS P/N	UNMARKED IN PROCESS P/N
6	104890-4	2 3	17.91 [0.705]	104890-5
4	104890-3	-	12.83 [0.505]	-
3	104890-2	-	10.29 [0.405]	-
5	104890-1	-	15.37 [0.605]	-

DO NOT SCALE PRINT. UNLESS SPECIFIED DIMENSIONS IN MILLIMETERS TOLERANCES ON:		DR 3-29-93 H.BAKERMANS		PART NO	
2 PLC DEC ± 0.13 [0.005]	3 PLC DEC ± -	CHK 5-10-93 P. SREMCICH	APPD 5-10-93 P. SREMCICH	AMP INCORPORATED Harrisburg, Pa. 17105	
ANGLES ± -		MATERIAL GLASS FILLED NYLON COLOR-BLACK	APPD 5-10-93 D. DUPLER	NAME HOUSING, MOD IV, SINGLE ROW, 2.54 [0.100] Q, CRIMP SNAP-IN	
FINISH -		APPLICATION SPEC -	PRODUCT SPEC -	SIZE C	FSCM NO 00779
		WEIGHT -		SCALE 4:1	DRAWING NO 104890
					SHEET 1 OF 1