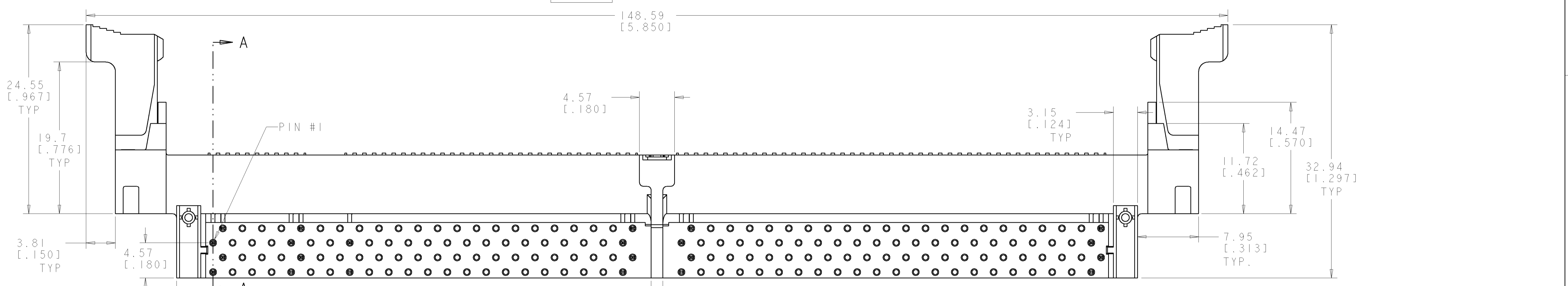
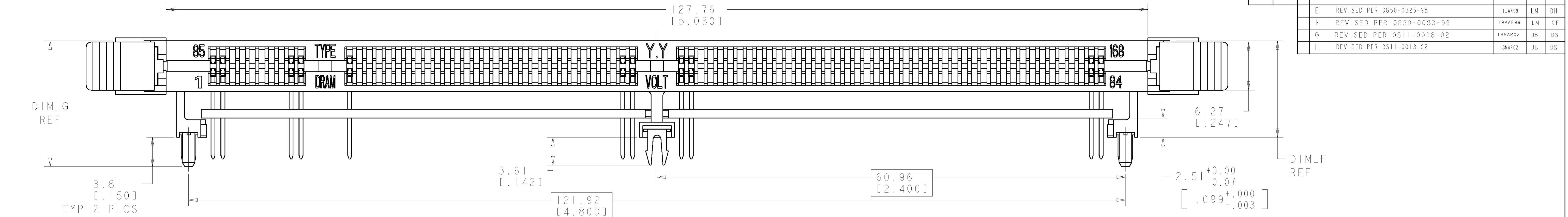
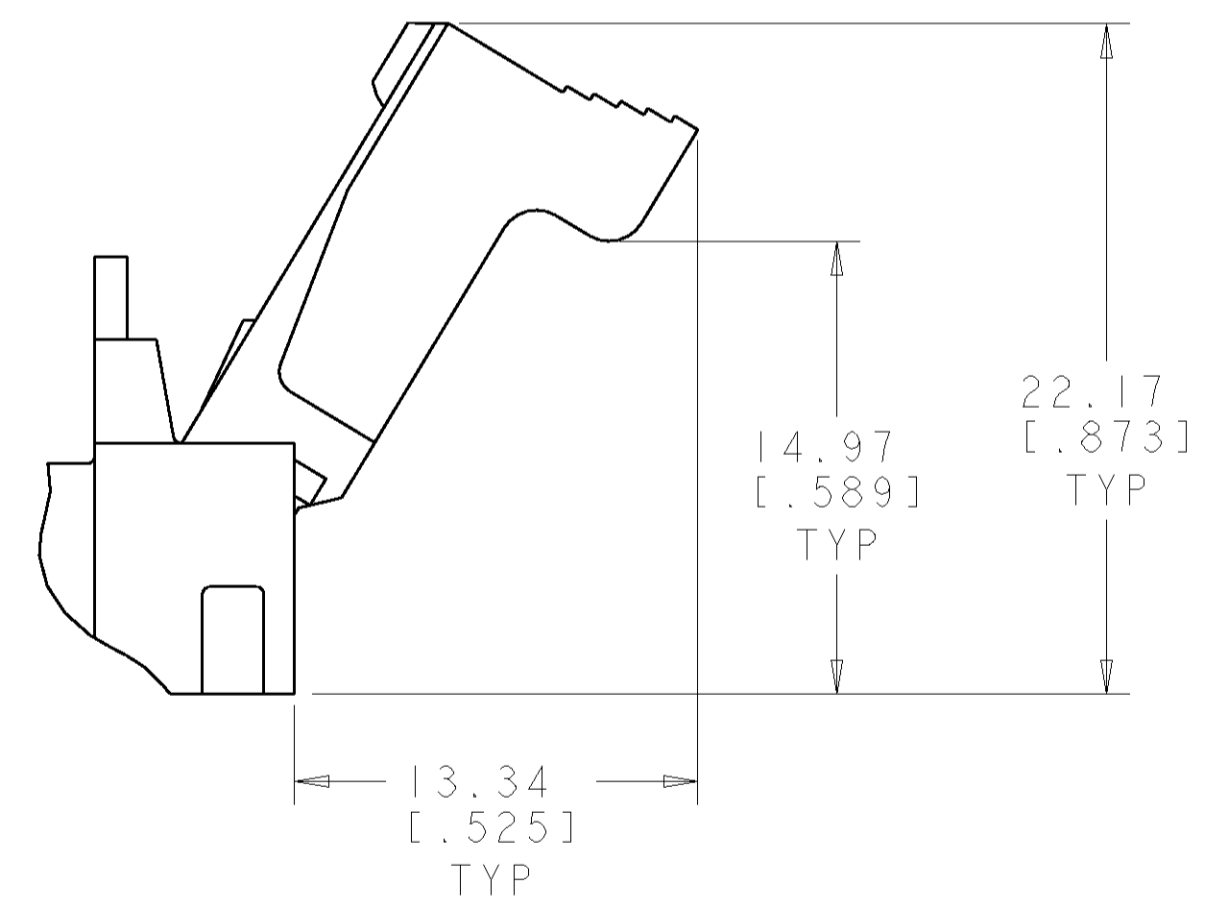


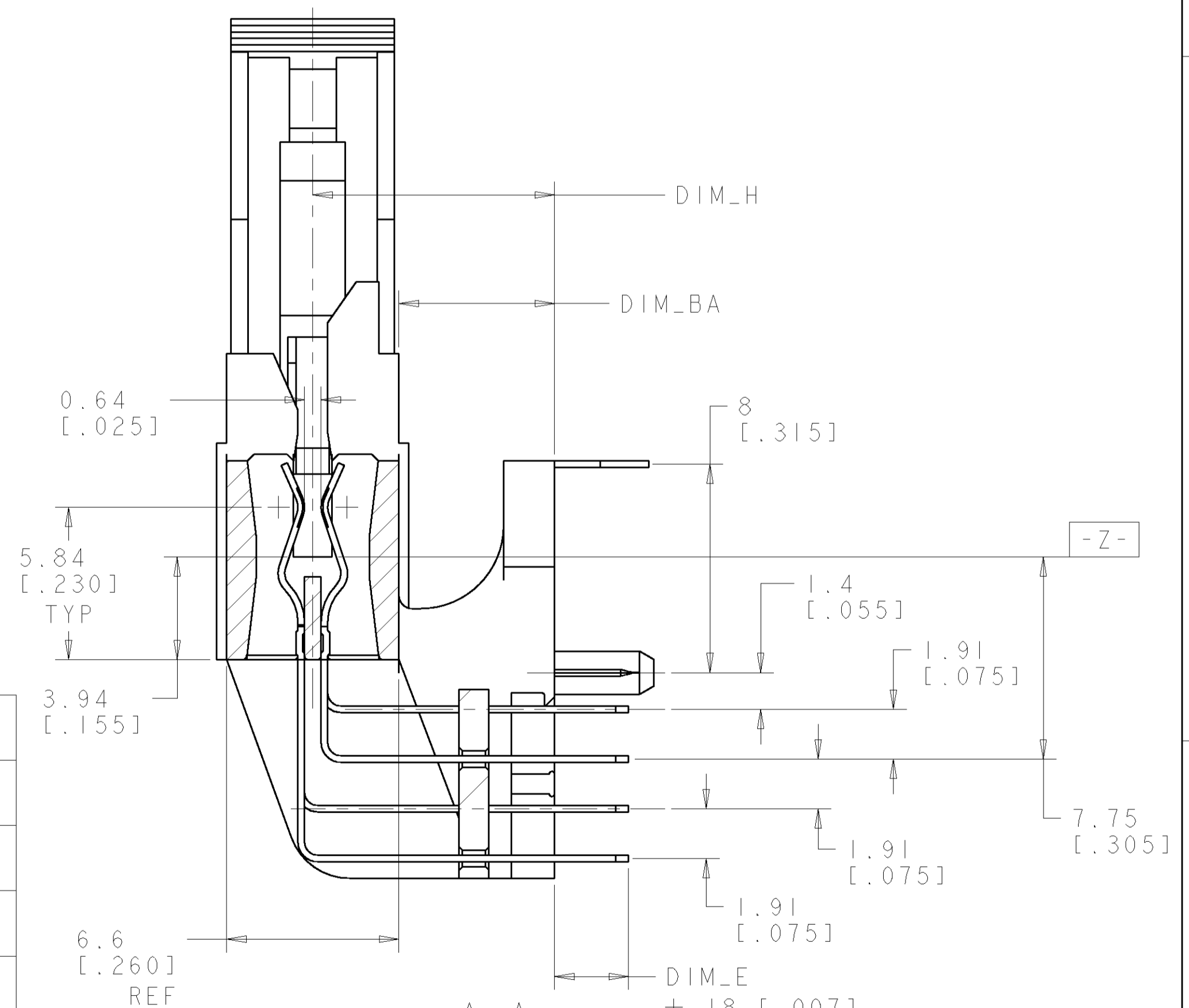
REV	DATE	BY	CHK	APPD	DESCRIPTION
E	11JAN99	LM	DH		REVISED PER 0650-0325-98
F	18MAR99	JB	CF		REVISED PER 0650-0083-99
G	18MAR02	JB	DS		REVISED PER 0511-0008-02
H	18MAR02	JB	DS		REVISED PER 0511-0013-02



- MATERIAL:  
HOUSING: HIGH TEMPERATURE NYLON  
CONTACT: PHOSPHOR BRONZE
- FINISH:  
CONTACT AREA:  
0.00076 [.000030] MIN THICK GOLD OVER  
0.001270 [.000050] MIN THICK NICKEL.  
OR  
0.000076 [.000003] MIN THICK GOLD FLASH OVER  
0.000510 [.000020] MIN THICK PALLADIUM NICKEL OVER  
0.001270 [.000050] MIN THICK NICKEL.  
SOLDERTAIL:  
0.00381 [.000150] MIN THICK TIN LEAD OVER  
0.00064 [.000025] MIN THICK NICKEL.
- FOR OPTIMUM PERFORMANCE, PADS SHOULD BE SMOOTH AND FLAT PADS TO BE PLATED WITH:  
0.00102 [.000040] MIN THICK GOLD OVER  
0.00127 [.000050] MIN THICK NICKEL.
- 390171-6 IS SAME CONNECTOR AS 1-390171-0 EXCEPT WITH LUBRICATED CONTACTS.



EXTRACTOR SHOWN IN THE OPEN POSITION



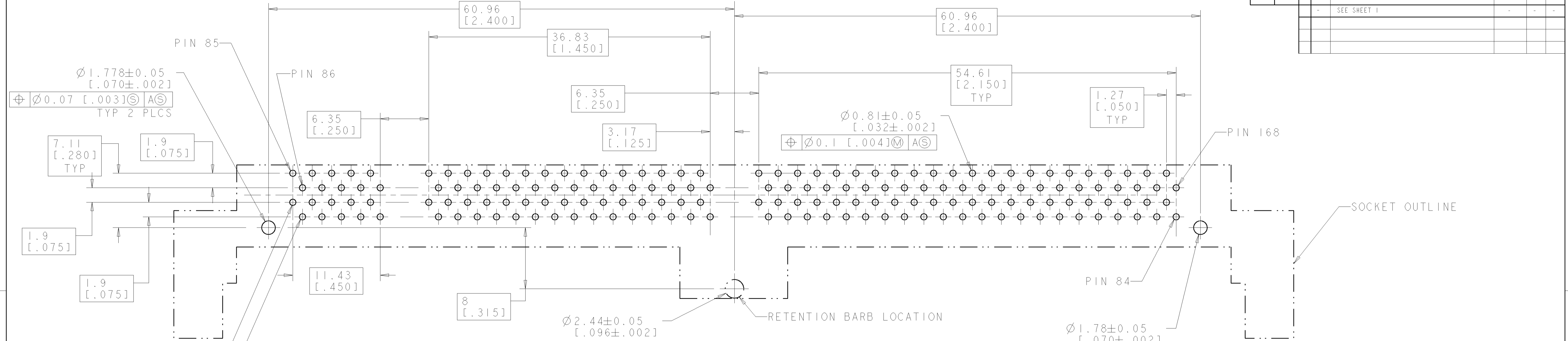
SECTION A-A  
SCALE 6:1

NB	3.3	10.92 [.430]	18.03 [.710]	14.22 [.560]	3.68 [.145]	7.62 [.300]	DETAIL C	DETAIL A	SYNC NON-BUFFERED DRAM, 3.3 VOLT	2-390171-6	
NB	3.3	10.92 [.430]	18.03 [.710]	14.22 [.560]	3.18 [.125]	7.62 [.300]	DETAIL C	DETAIL A	SYNC NON-BUFFERED DRAM, 3.3 VOLT	1-390171-6	
SYNC	3.3	10.92 [.430]	18.03 [.710]	14.22 [.560]	3.18 [.125]	7.62 [.300]	DETAIL B	DETAIL A	SYNC DRAM, 3.3 VOLT	1-390171-5	
STD	3.3	10.92 [.430]	18.03 [.710]	14.22 [.560]	3.18 [.125]	7.62 [.300]	DETAIL A	DETAIL A	STD DRAM, 3.3 VOLT	1-390171-4	
NB	3.3	9.27 [.365]	16.38 [.645]	12.57 [.495]	2.83 [.112]	5.97 [.235]	DETAIL C	DETAIL A	SYNC NON-BUFFERED DRAM, 3.3 VOLT	1-390171-0	
NB	3.3	9.27 [.365]	16.38 [.645]	12.57 [.495]	2.83 [.112]	5.97 [.235]	DETAIL C	DETAIL A	SYNC NON-BUFFERED DRAM, 3.3 VOLT	390171-6 <sup>4</sup>	
SYNC	3.3	9.27 [.365]	16.38 [.645]	12.57 [.495]	2.83 [.112]	5.97 [.235]	DETAIL B	DETAIL A	SYNC DRAM, 3.3 VOLT	390171-5	
STD	3.3	9.27 [.365]	16.38 [.645]	12.57 [.495]	2.83 [.112]	5.97 [.235]	DETAIL A	DETAIL A	STD DRAM, 3.3 VOLT	390171-4	
TYPE	Y.Y	DIM_H	DIM_G	DIM_F	DIM_E ±.18 [.007]		DIM_BA	KEY #1	KEY #2	PART DESCRIPTION	PART NUMBER

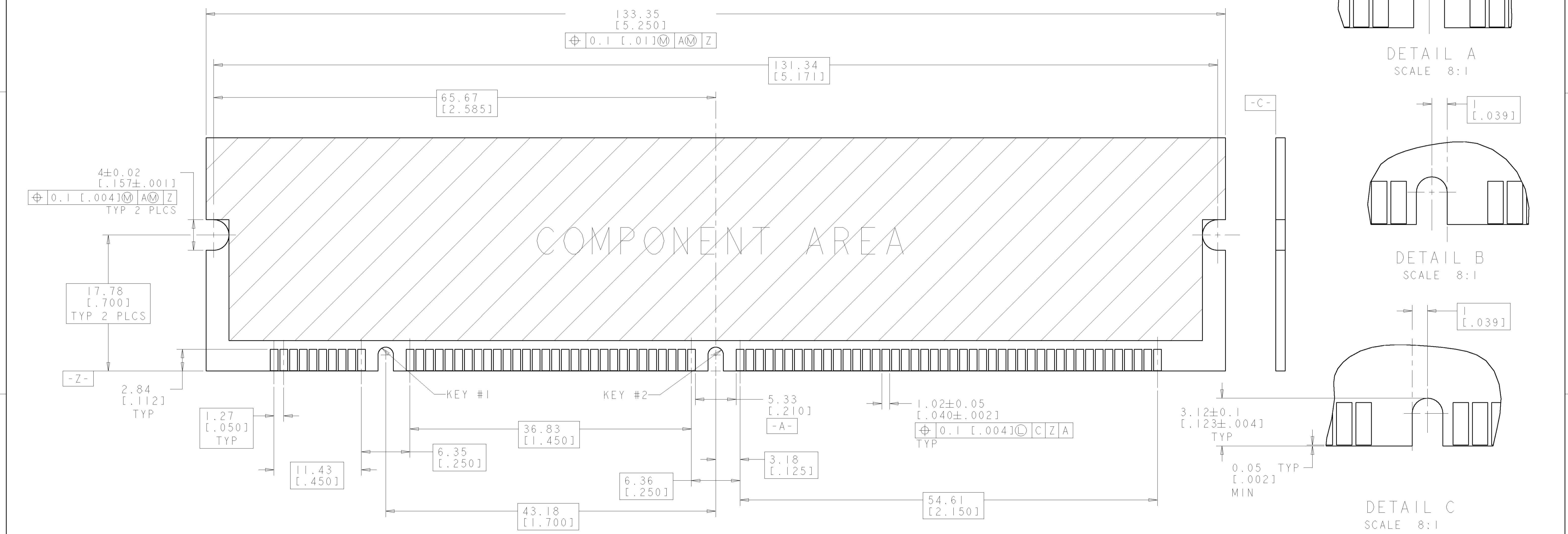
<small>THIS DRAWING IS A CONTROLLED DOCUMENT FOR AMP INCORPORATED. ALL CHANGES MUST BE CONTROLLED BY THE ORIGINAL DRAWING ORGANIZATION. SHOULD BE CONTACTED FOR THE LATEST REVISIONS.</small>		DWN: J. BURWELL 29JUNE98 CHK: D. HAMMER 29JUNE98 APPD:	<b>AMP</b> AMP Incorporated Harrisburg, PA 17105-3608
DIMENSIONS: mm(INCHES)	TOLERANCES UNLESS OTHERWISE SPECIFIED: 0 PLC ± 1 PLC ± 2 PLC ± 3 PLC ±.13 [.005] 4 PLC ± ANGLES ±1°	PRODUCT SPEC APPLICATION SPEC WEIGHT CUSTOMER DRAWING	NAME: SOCKET, DIMM., DRO, RT ANGLE, 168 POSITION, 17.78mm LOCKING EXTRACTORS. SIZE: A1 CAGE CODE: 00779 DRAWING NO: C=390171 SCALE: 4:1 SHEET 1 OF 2 REV H

LOC	DIST	REV	DATE	BY	APPD
GP	0				

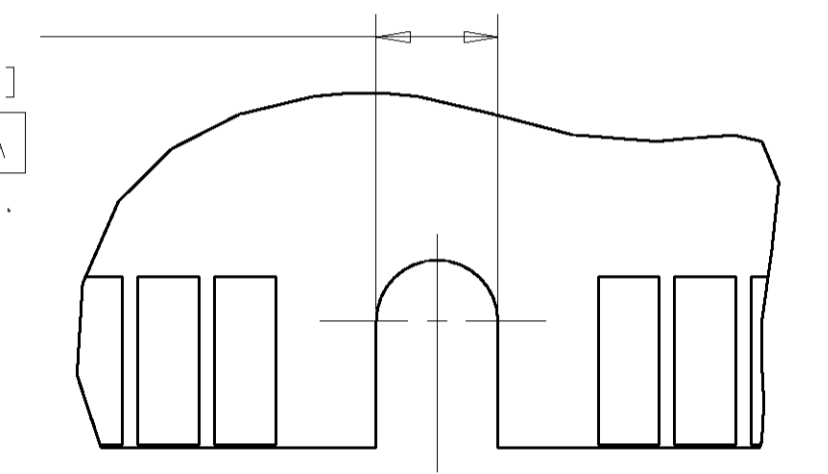
REVISIONS			
NO.	DATE	DESCRIPTION	BY
1		SEE SHEET 1	



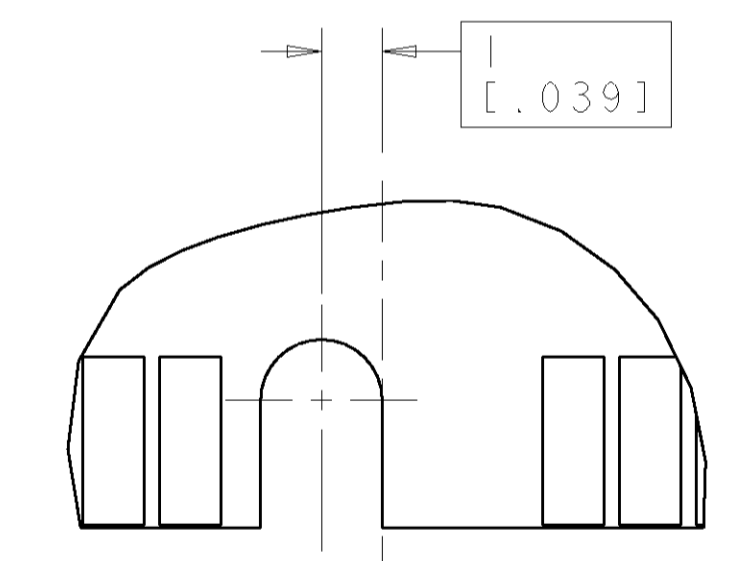
RECOMMENDED CIRCUIT BOARD HOLE LAYOUT



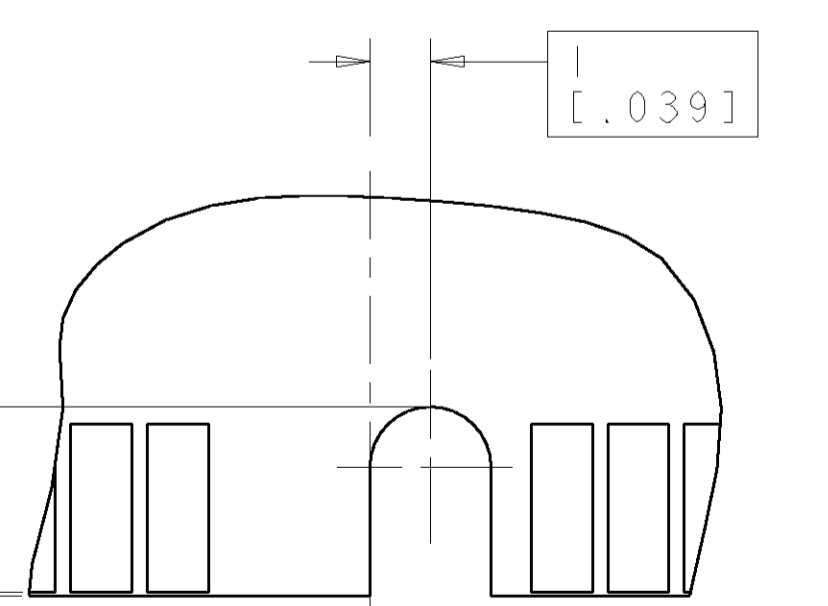
RECOMMENDED MODULE LAYOUT  
SEE JEDEC SPEC. MO-161 FOR COMPLETE MODULE DETAILS  
1.27±0.10 [0.050±.004] THICK ACROSS CONTACT PADS



DETAIL A  
SCALE 8:1



DETAIL B  
SCALE 8:1



DETAIL C  
SCALE 8:1

<small>THIS DRAWING IS A CONTROLLED DOCUMENT FOR AMP INCORPORATED. ALL DIMENSIONS ARE TO BE CONTROLLED ON RECEIVING. ORGANIZATION SHOULD BE CONTACTED FOR THE LATEST REVISION.</small>		DWN J. BURWELL 29 JUNE 98 ENR D. HAMMER 29 JUNE 98 APVD NAME PRODUCT SPEC APPLICATION SPEC WEIGHT CUSTOMER DRAWING	AMP Incorporated Harrisburg, PA 17105-3608 <b>AMP</b> SOCKET, DIMM., DRO, RT ANGLE, 168 POSITION, 17.78mm LOCKING EXTRACTORS. SIZE CAGE CODE DRAWING NO. A1 00779 C=390171 SCALE 1:1 SHEET 2 OF 2 REV H
DIMENSIONS: mm [INCHES]	TOLERANCES UNLESS OTHERWISE SPECIFIED: 0 PLCS ± 1 PLCS ± 2 PLCS ± 3 PLCS ±0.13 [0.005] 4 PLCS ± ANGLES ±1°	FINISH MATERIAL	DATE DRAWN ENR APVD NAME PRODUCT SPEC APPLICATION SPEC WEIGHT CUSTOMER DRAWING