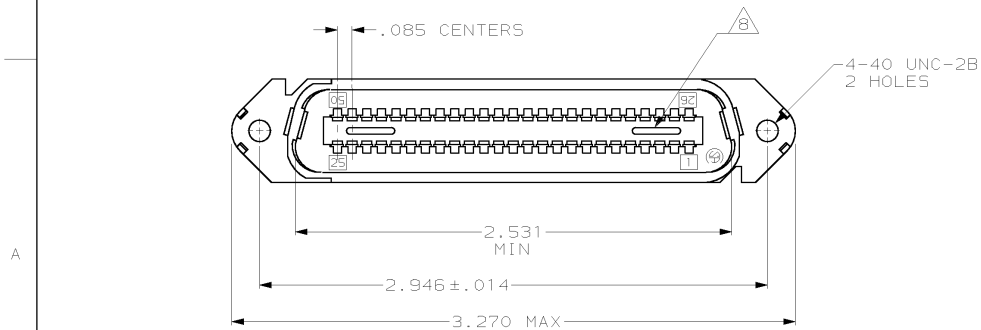
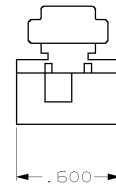
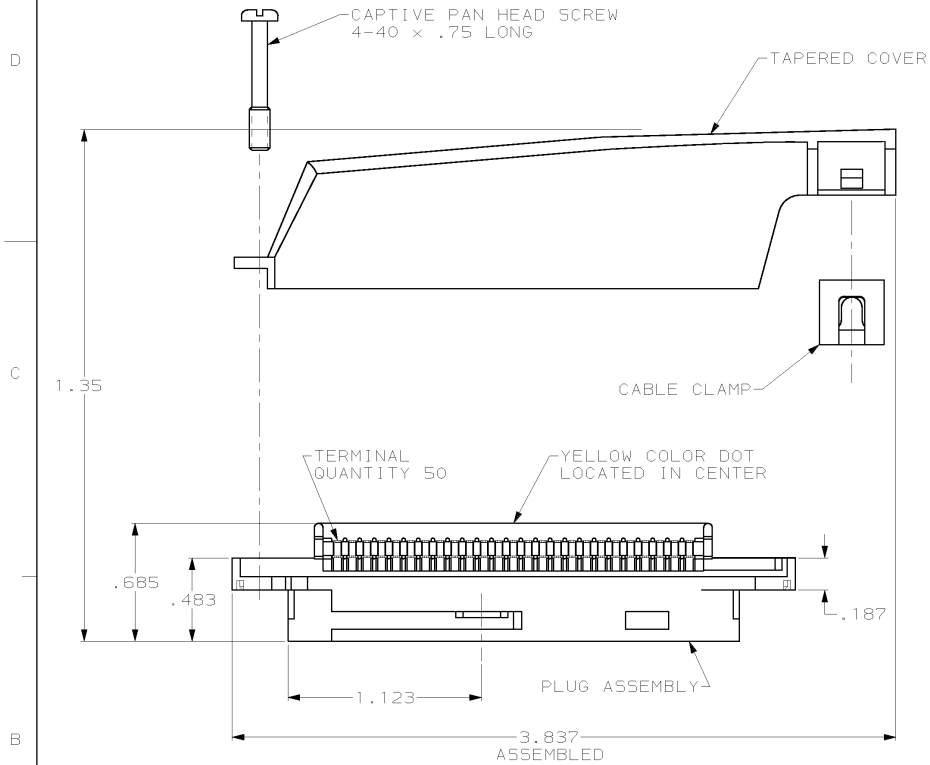


| LOC | DIST | REVISIONS | | | | | |
|-----|------|-----------|-----|-------------------------------|---------|-----|------|
| AA | 22 | P | LTR | DESCRIPTION | DATE | OWN | APVD |
| | | P | | OBSOLETE; -4; EC 0515-0014-03 | 17APR03 | DLD | RPM |



- ⚠ MATERIAL: HOUSING, COVERS AND CABLE CLAMP - THERMOPLASTIC. SEE TABLE FOR COLOR. TERMINALS - GOLD OVER NICKEL PLATED HIGH STRENGTH COPPER ALLOY.
- 2. THE CONTACT SURFACES OF THE TERMINALS ARE COATED WITH LUBRICANT.
- 3. ALL DIMENSIONS SHOWN ARE FOR REFERENCE ONLY UNLESS OTHERWISE SPECIFIED.
- 4. CENTER-TO-CENTER SPACING OF TERMINALS IS .085.
- 5. WIRE SIZE: 26-27-28 AWG 7 STRANDS OF COPPER CONDUCTORS. MAX INSULATION DIAMETER OF .045 IS ACCEPTABLE FOR MOST APPLICATIONS.
- 6. COVERS AND HARDWARE SHIPPED UNASSEMBLED.
- 7. KIT SHIPPED IN POLY BAG FORM.
- ⚠ CORING MAY OR MAY NOT APPEAR AND IS AT THE DISCRETION OF TYCO ENGINEERING.

| | | |
|----------|-------|-------------|
| OBSOLETE | GRAY | 552402-4 |
| | BLACK | 552402-1 |
| | COLOR | PART NUMBER |

| | | | | |
|---|--------|--|-----------|---|
| THIS DRAWING IS A CONTROLLED DOCUMENT. | | DRN A. HOLT | 14-FEB-97 | AMP Incorporated Harrisburg, PA 17105-3608 |
| DIMENSIONS: INCHES | | CHK M. FRIEL | 14-FEB-97 | |
| TOLERANCES UNLESS OTHERWISE SPECIFIED: | | APVD J. WILKERSON | 14-FEB-97 | |
| 0 PLC ±.0005 1 PLC ±.0005 2 PLC ±.0005 3 PLC ±.0005 4 PLC ±.0005 ANGLES ±.0005 | | NAME PRODUCT SPEC APPLICATION SPEC SIZE CASE CODE (DRAWING NO) RESTRICTED TO | | |
| MATERIAL | FINISH | WEIGHT | SCALE | A200779-552402 CUSTOMER DRAWING |
| | | SCALE: 2:1 | | SHEET 1 OF 1 REV P |

552402