



CUSTOMER DATA

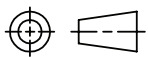
PART NO. VFM-15F71-S01	SHT. 1 OF 2
---------------------------	----------------

DRAWN M.BROWN	APPROVAL C.GORDON	DATE FIRST_DRAWN 06-29-04	SCALE 1=1
------------------	----------------------	------------------------------	--------------



CUSTOMER TE_CONNECTIVITY_STANDARD

X.XXX = INCHES (X.XX) = MILLIMETERS
--

TOLERANCE UNLESS SPECIFIED OTHERWISE	0.X = +/- .1 0.XX = +/- .01 0.XXX = +/- .003 ANGLES = +/- 1°
---	---



DO NOT SCALE THIS DRAWING

CHANGES			
REV.	DATE	CO	APP.
 D	03-27-07	CHG. RATINGS ^{NT}	
 E	24MAY2011	ECO-11-010686 ^{HMF}	HMF

ELECTRICAL CHARACTERISTICS: (ALL DATA APPLIES @ 23°C UNLESS OTHERWISE SPECIFIED)

COIL DATA:

NOMINAL VOLTAGE:	12 VDC
OPERATE VOLTAGE:	7.2 VDC MAXIMUM
RELEASE VOLTAGE:	1.2 VDC MINIMUM
EQUIVALENT COIL RESISTANCE:	79.5 OHMS +/- 10%
OPERATE TIME:	5 mSEC. TYPICAL (EXCLUDING BOUNCE) WITH RATED COIL VOLTAGE APPLIED
RELEASE TIME:	2 mSEC. TYPICAL (EXCLUDING BOUNCE) WITH ZERO VOLTS APPLIED AFTER HAVING BEEN ENERGIZED AT RATED COIL VOLTAGE
TEMPERATURE RANGE:	STORAGE -40°C TO +155°C OPERATING -40°C TO +85°C OPERATING -40°C TO +125°C (APPLICATION DEPENDENT)

CONTACT DATA: (CONTACT DATA IS FORMATTED N.O./N.C.)

CONTACT ARRANGEMENT:	1 FORM C (SPDT)
CONTACT MATERIAL:	SILVER-TIN OXIDE
CONTACT MILLIVOLT DROP:	200 mV @ 30A MAX. (AFTER SWITCHING) 250 mV @ 20A MAX. (AFTER SWITCHING)
MAXIMUM MAKE CURRENT:	150A/45A (LAMP) @ 16 VDC
MAXIMUM BREAK CURRENT:	40A/20A @ 16 VDC RESISTIVE
MAXIMUM CONTINUOUS CURRENT	35A/20A @ 85°C
INITIAL BREAKDOWN CURRENT	500V RMS CONTACTS TO COIL
EXPECTED LIFE:	100,000 OPERATIONS, 30 A, 14 VDC RESISTIVE AT 23°C

MECHANICAL CHARACTERISTICS:

EXPECTED LIFE:	10 MILLION OPERATIONS, NO CONTACT LOAD, 20 OPERATIONS PER SECOND MAXIMUM
----------------	--



CUSTOMER DATA

PART NO.
VFM-15F71-S01

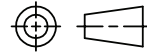
SHT. 2
OF 2

DRAWN M.BROWN
APPROVAL C.GORDON
DATE FIRST_DRAWN 06-29-04
SCALE 1=1

CUSTOMER
TE_CONNECTIVITY_STANDARD

X.XXX = INCHES
(X.XX) = MILLIMETERS

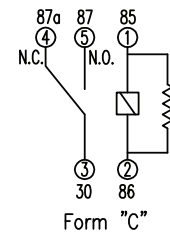
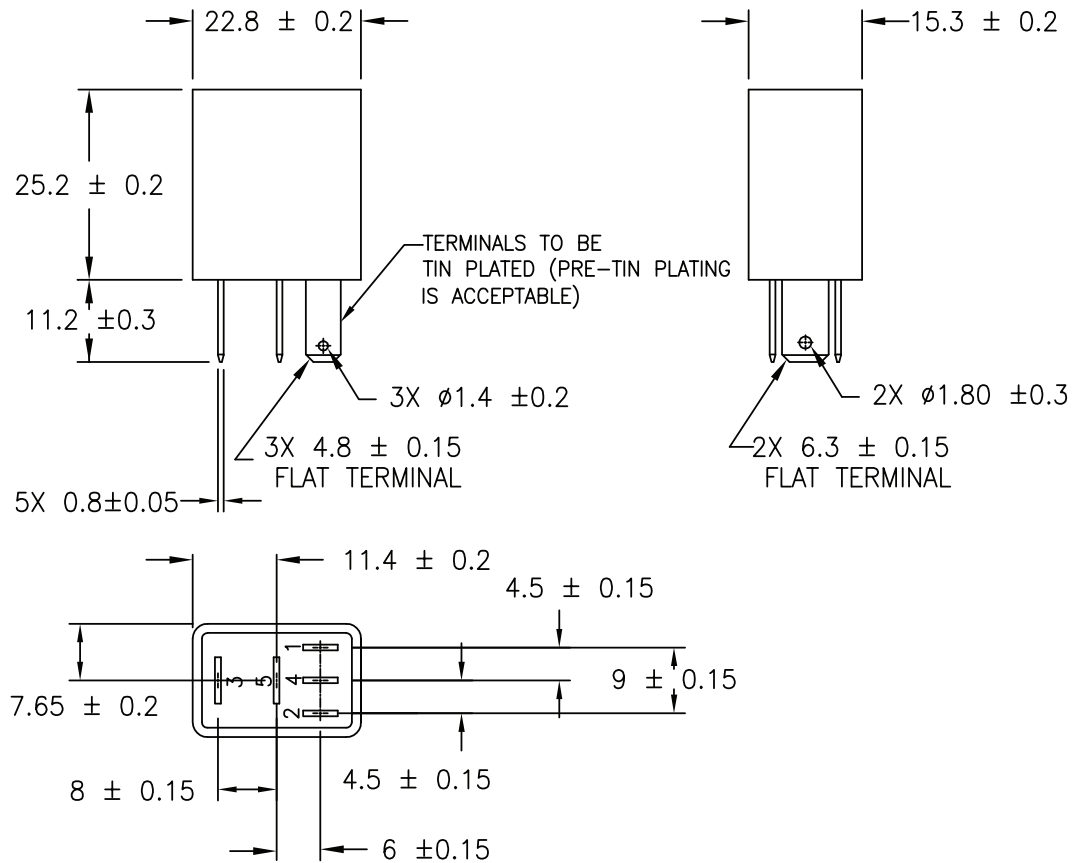
TOLERANCE 0.X = +/- .1
UNLESS 0.XX = +/- .01
SPECIFIED 0.XXX = +/- .003
OTHERWISE ANGLES = +/- 1°



DO NOT SCALE THIS DRAWING

REV. E

MARKING TO INCLUDE:
MANUFACTURER'S NAME, MANUFACTURER'S PART NUMBER,
HI PWR, SCHEMATIC, COUNTRY OF
ORIGIN, AND DATE CODE



SCHEMATIC DIAGRAM