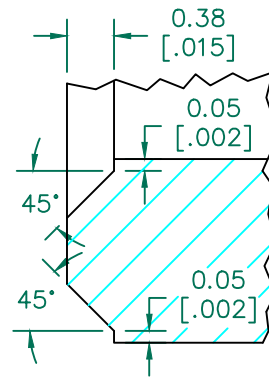


RoHS

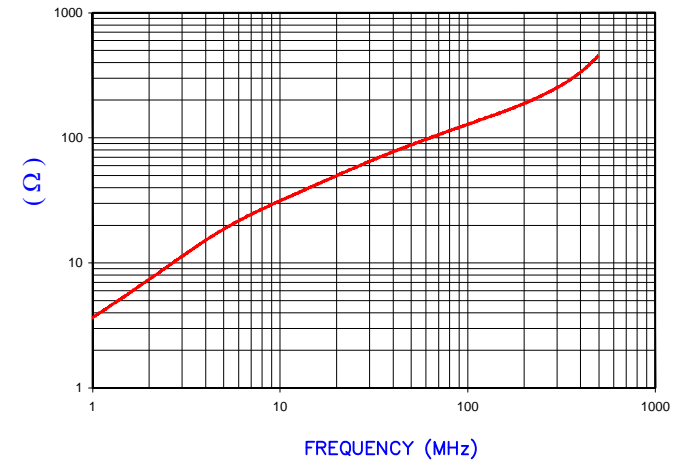
**UNCONTROLLED DOCUMENT**



CHAMFER  
DETAIL A

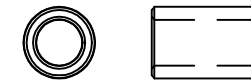
IMPEDANCE ( Z )			
Frequency	25 MHz	100 MHz	300 MHz
Nominal (REF)	57 Ω	128 Ω	248 Ω
Minimum	- Ω	102 Ω	- Ω

Z vs. FREQUENCY  
(REF. ONLY)



AGILENT E4991A Impedance/Material Analyzer  
HP 16092A Test Fixture, REF 3707

SCALE DRAWING 1:1



28B0390-200

NOTES: UNLESS OTHERWISE SPECIFIED

1. COSMETIC SPECIFICATION REFER TO WI-QA-038.

BARE DIMENSIONS

A	9.91 [.390]	±	0.20 [.008]
B	6.35 [.250]	±	0.15 [.006]
C	15.00 [.590]	±	0.30 [.012]

WEIGHT/1000 3.32 kgs 7.32 lbs

DIMENSIONS ARE IN mm [INCHES].			
H	UPDATE COMPANY LOGO	05/20/15	QIU
G	UPDATE COMPANY LOGO	12/28/12	QIU
F	UPDATE Z SPEC @ 100 MHZ	05/29/07	JRK
E	UPDATE COMPANY LOGO	04/19/07	TMB
D	ADJUST 100 MHZ MIN VALUE	11/22/06	TMB
C	CHG P/N FROM 20*, REM COATING SPEC UPDATE Z SPECS	06/29/04	JRK
B	UPDATE FORMAT & Z SPECS , ADD CURVE REV COATING DIMS & REM COLORS	10/21/03	JRK
A	ORIGINAL DRAFT	04/12/01	JRK
REV	DESCRIPTION	DATE	INT

This print is the property of Laird Tech. and is loaned in confidence subject to return upon request and with the understanding that no copies shall be made without the written consent of Laird Tech. All rights to design or invention are reserved.



PROJECT/PART NUMBER: 28B0390-200		REV H	DRAWN BY: JRK
DATE: 04/12/01	SCALE: 3 : 1	MATERIAL: FERRITE	
CAD # 28B0390-200-H	TOOL # B0390		