

# Broadband Wireless Antenna

## J23016S00-90N



### 2.5 GHz HIGH-PERFORMANCE 90° BEAMWIDTH DUAL 45° SLANT SECTOR

The Laird Technologies J23016S00-90N 2.5 GHz wide-band, dual slant sector antenna covers frequencies from 2.3-2.7 GHz. Extremely low-side lobes, null fill below the horizon, and uniform energy distribution with the coverage area are achieved thanks to our highly skilled engineering staff and the utilization of our proprietary Artificial Intelligence RF Optimizing development tool. The antenna meets all aspects of ETSI EN 301.326-3 SS. Laird Technologies' suite of high-performance sector antennas features proprietary design elements resulting in extremely high levels of system performance and ruggedness while maintaining very slim profiles with low wind and ice loading.

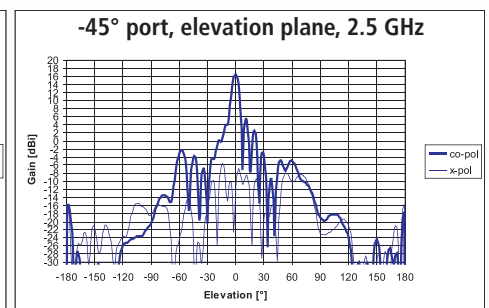
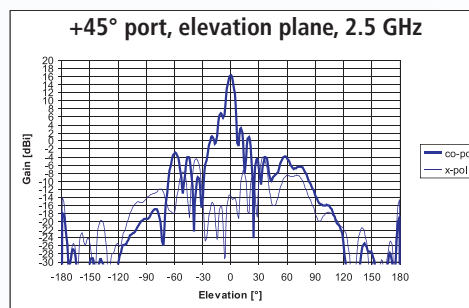
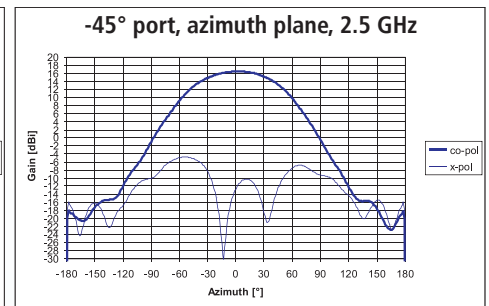
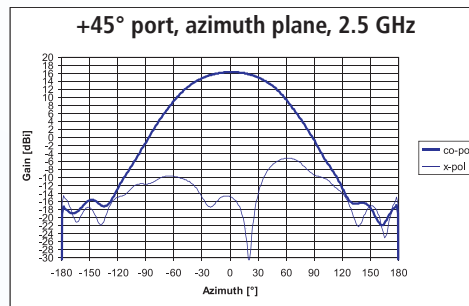
#### FEATURES

- Low-side lobe performance
- Null fill below the horizon
- Excellent f/b ratio
- High level antenna-to-antenna co-located isolation
- Optimized for maximum ratio combining
- Rugged tilt mount hardware included

#### MARKETS

- High multi-path environment
- Large carrier class deployment
- WiMax service provider
- Ideal base station antenna for high density wireless network coverage in mobile and fixed applications

#### ANTENNA PATTERNS



global solutions: local support™

Americas: +1.847.839.6907  
IAS-AmericasEastSales@lairdtech.com

Europe: +1.32.80.7866.12  
IAS-EUSales@lairdtech.com

Asia: +1.65.6.243.8022  
IAS-AsiaSales@lairdtech.com

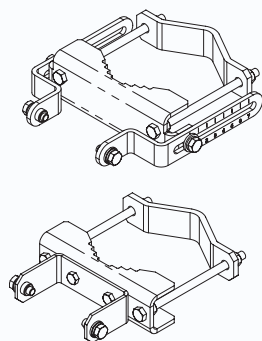
[www.lairdtech.com](http://www.lairdtech.com)

# Broadband Wireless Antenna

## J23016S00-90N

### SPECIFICATIONS

PARAMETER	SPECIFICATIONS
Antenna part number	J23016S00-90N
Frequency range	2.3-2.7 GHz
Gain @ 2.5GHz	16 dBi
Maximum VSWR	1.8:1
3 dB beamwidth- azimuth	90°
3 dB beamwidth- elevation	7°
Elevation null fill	Down to 25°
Azimuth sidelobes	ETSI EN 301.326-3 SS
Polarization	+45° and -45°
Port-to-port isolation	> 25 dB
Front-to-back ratio	> 35 dB
Maximum input power	40 W average, 480 W peak
Input impedance	50 ohm
Typical cross polarization	< -20 dB
Mechanical size	40 in x 8.2 in x 4.5 in
Antenna weight	3.9 kg (8.5 lbs); 6.3 kg (13.0 lbs) with bracket
Wind survival rating	Operational 100 mph/ Survival 136 mph
Antenna connection	Type N female
Radome	ASA light grey
Mount style	Mast mount
Mounting hardware	Tilt mount kit 1.5 in to 4.5 in dia.
Temperature	-40°C to +70°C
Lightning protection	DC-grounded



**Mounting Kit:**  
**JBXRK-01-TM5**

ANT-DS-J23016S00-90N 0611

Any information furnished by Laird Technologies, Inc. and its agents is believed to be accurate and reliable. All specifications are subject to change without notice. Responsibility for the use and application of Laird Technologies materials rests with the end user, since Laird Technologies and its agents cannot be aware of all potential uses. Laird Technologies makes no warranties as to the fitness, merchantability or suitability of any Laird Technologies materials or products for any specific or general uses. Laird Technologies shall not be liable for incidental or consequential damages of any kind. All Laird Technologies products are sold pursuant to the Laird Technologies' Terms and Conditions of sale in effect from time to time, a copy of which will be furnished upon request. © Copyright 2011 Laird Technologies, Inc. All Rights Reserved. Laird, Laird Technologies, the Laird Technologies Logo, and other marks are trade marks or registered trade marks of Laird Technologies, Inc. or an affiliate company thereof. Other product or service names may be the property of third parties. Nothing herein provides a license under any Laird Technologies or any third party intellectual property rights.