



© 2016 AF CI



Amphenol
FCI



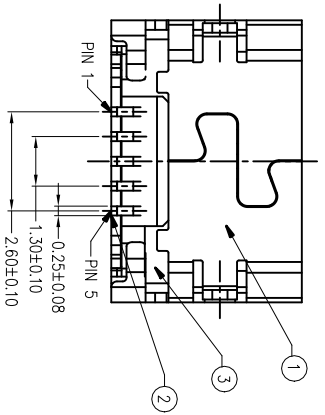
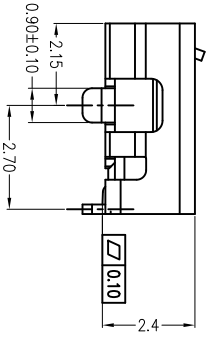
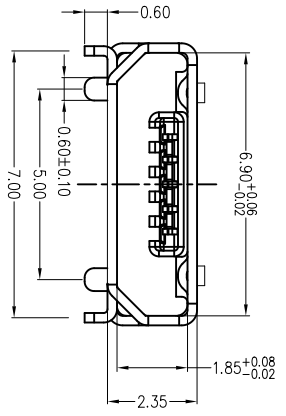
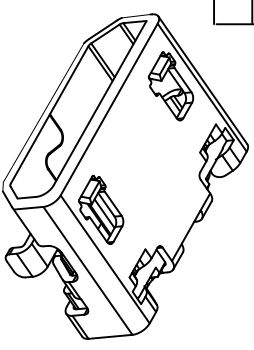
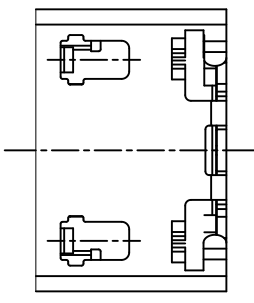
31



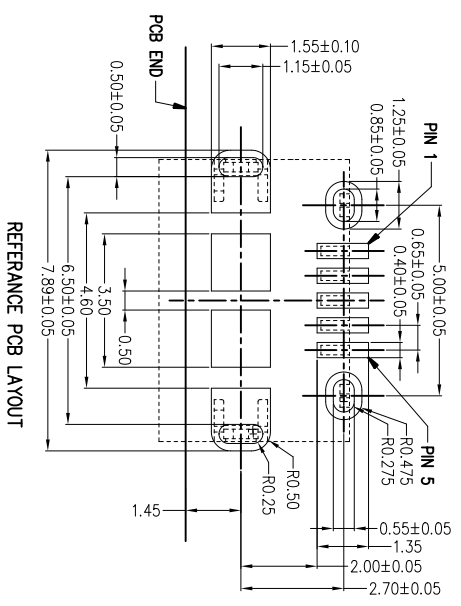
4

PART NUMBER
10118194-0X1XLF

Item	Title	Q'TY
1	Shell	1
2	Terminal	5
3	InsertMolding	1



- NOTES:
- MATERIAL:
HOUSING: HIGH THERMOPLASTIC RESIN, UL94V-0, COLOR: BLACK
TERMINAL: COPPER ALLOY
SHELL: STAINLESS WITH FLANGE OR WITHOUT FLANGE
 - FINISH:
CONTACT AREA: SEE PRODUCT MEMBER DESCRIPTION
CONTACT SOLDER AREA: GOLD FLASH
SHELL: MATTE TIN PLATED
- TYPE
UNDER NICKEL PLATED ALL OVER.
PRODUCT SPECIFICATION: GS-12-64I.
PACKAGING SPECIFICATION: GS-14-2180.
THE "LF" MEANS FOR LEAD FREE AND CAN WITHSTAND EXPOSE TO 260°C PEAK TEMPERATURE FOR 10 SECONDS IN IR REFLOW PROCESS.



B

form: A4mmXlc-2016-02-24

1

2

3

4

mat'l. code	surface	tolerance	projection	product family
	ASME Y14.3	ASME Y14.5		HPL_511
tr	ecn no	dr	date	
D				
	tolerances unless otherwise specified			
	angle	ASD	X±0.38	
		E	.XX±0.25	
		F	.XXX±0.10	
	X±.2			
dr	JASON_JSU	05/21/11		
eng	JASON_JSU	05/21/11		
chr	JASON_JSU	05/21/11		
dpdp	GARY_HSEH	05/21/11		
sheet	revision	D		
index	sheet	2		

5

B