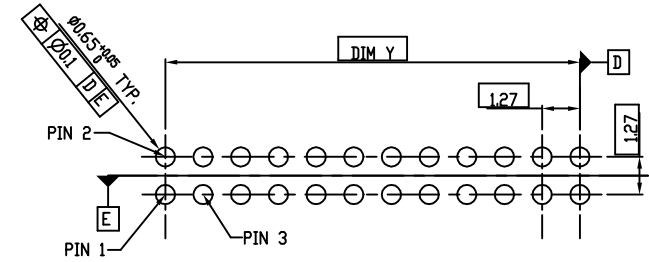
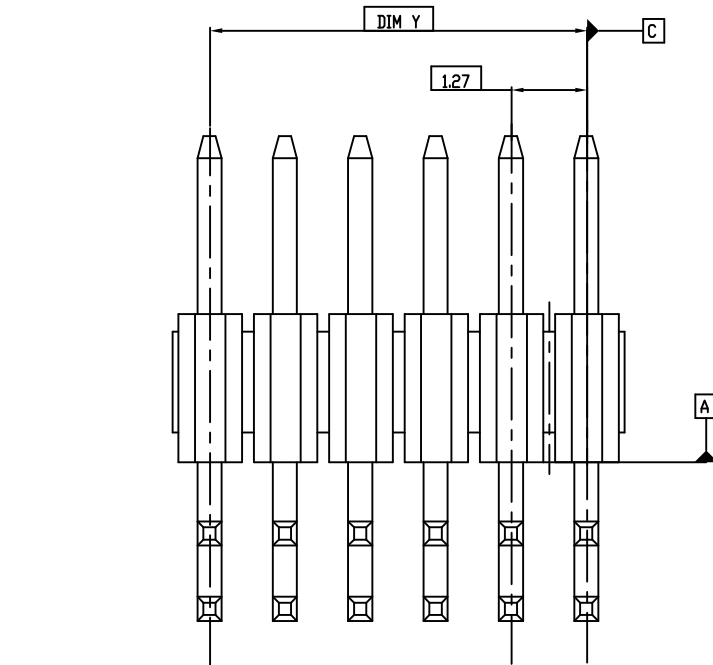
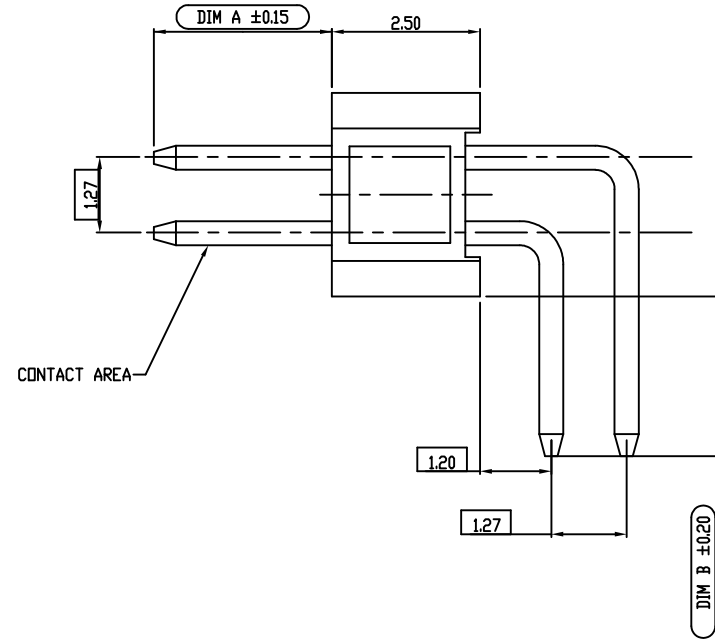
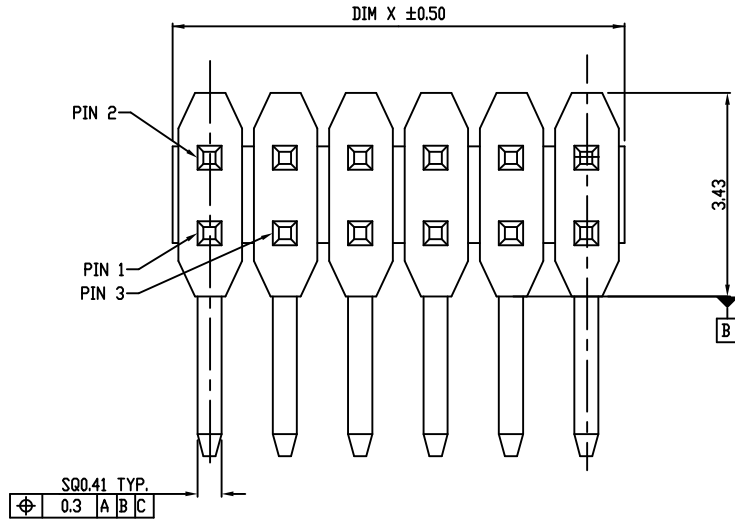


PART NO.
20021112



RECOMMENDED PCB LAYOUT

| | | | | | | | | | |
|-------------|--|--------------------|--|----------------------------|--|--------------------|--|---------------------------------------|--|
| mat'l. code | | surface ISO 1302 ✓ | | tolerance ISO 406 ISO 1101 | | projection | | product family | |
| ltr | | ecn no | | dr | | date | | MINITEK127® | |
| F | | ELX-N-23548 | | TIM | | 03/21/16 | | title | |
| G | | ELX-N-26146 | | TONY | | 02/22/16 | | UNSHROUDED HDR RA TH | |
| | | | | angles | | linear | | tolerances unless otherwise specified | |
| | | | | 0°±2' | | | | mm | |
| | | | | | | | | scale 1:1 | |
| | | | | dr | | ZK HU 08/01/12 | | dwg no | |
| | | | | engr | | ZK HU 08/01/12 | | sheet 1 of 3 | |
| | | | | chr | | BIAN RICK 08/01/12 | | size | |
| | | | | app'd | | BIAN RICK 08/01/12 | | A3 | |
| sheet | | revision | | G | | G | | type | |
| index | | sheet | | 1 | | 2 | | Product Customer Drawing | |

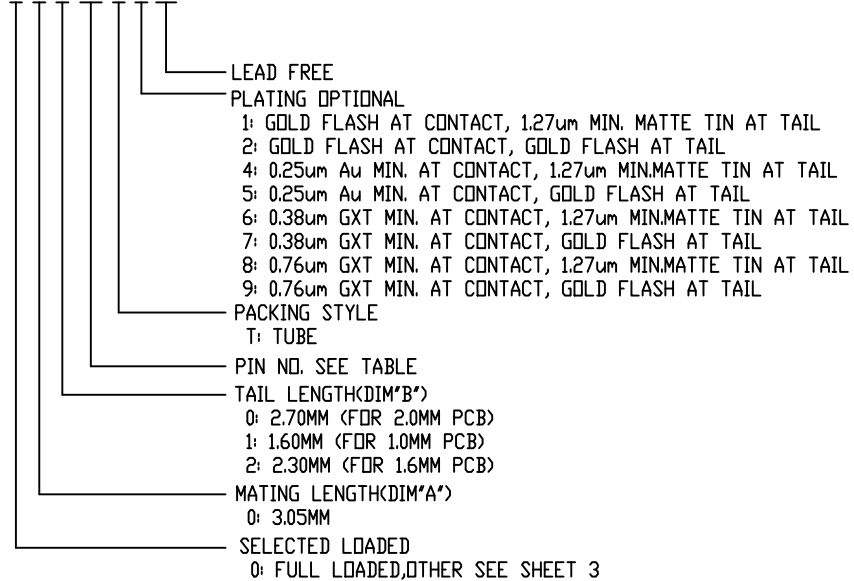


| PART NO. | PDS. | DIM*X" | DIM*Y" |
|--------------------|--------|--------|--------|
| 20021112-0XX04XXLF | 2 X 2 | 2.54 | 2.54 |
| 20021112-0XX06XXLF | 2 X 3 | 3.81 | 2.54 |
| 20021112-0XX08XXLF | 2 X 4 | 5.08 | 3.81 |
| 20021112-0XX10XXLF | 2 X 5 | 6.35 | 5.08 |
| 20021112-0XX12XXLF | 2 X 6 | 7.62 | 6.35 |
| 20021112-0XX14XXLF | 2 X 7 | 8.89 | 7.62 |
| 20021112-0XX16XXLF | 2 X 8 | 10.16 | 8.89 |
| 20021112-0XX18XXLF | 2 X 9 | 11.43 | 10.16 |
| 20021112-0XX20XXLF | 2 X 10 | 12.70 | 11.43 |
| 20021112-0XX12XXLF | 2 X 11 | 13.97 | 12.70 |
| 20021112-0XX24XXLF | 2 X 12 | 15.24 | 13.97 |
| 20021112-0XX26XXLF | 2 X 13 | 16.51 | 15.24 |
| 20021112-0XX28XXLF | 2 X 14 | 17.78 | 16.51 |
| 20021112-0XX30XXLF | 2 X 15 | 19.05 | 17.78 |
| 20021112-0XX32XXLF | 2 X 16 | 20.32 | 19.05 |
| 20021112-0XX34XXLF | 2 X 17 | 21.59 | 20.32 |
| 20021112-0XX36XXLF | 2 X 18 | 22.86 | 21.59 |
| 20021112-0XX38XXLF | 2 X 19 | 24.13 | 22.86 |
| 20021112-0XX40XXLF | 2 X 20 | 25.40 | 24.13 |
| 20021112-0XX42XXLF | 2 X 21 | 26.67 | 25.40 |
| 20021112-0XX44XXLF | 2 X 22 | 27.94 | 26.67 |
| 20021112-0XX46XXLF | 2 X 23 | 29.21 | 27.94 |
| 20021112-0XX48XXLF | 2 X 24 | 30.48 | 29.21 |
| 20021112-0XX50XXLF | 2 X 25 | 31.75 | 30.48 |

| PART NO. | PDS. | DIM*X" | DIM*Y" |
|--------------------|--------|--------|--------|
| 20021112-0XX52XXLF | 2 X 26 | 33.02 | 31.75 |
| 20021112-0XX54XXLF | 2 X 27 | 34.29 | 33.02 |
| 20021112-0XX56XXLF | 2 X 28 | 35.56 | 34.29 |
| 20021112-0XX58XXLF | 2 X 29 | 36.83 | 35.56 |
| 20021112-0XX60XXLF | 2 X 30 | 38.10 | 36.83 |
| 20021112-0XX62XXLF | 2 X 31 | 39.37 | 38.10 |
| 20021112-0XX64XXLF | 2 X 32 | 40.64 | 39.37 |
| 20021112-0XX66XXLF | 2 X 33 | 41.91 | 40.64 |
| 20021112-0XX68XXLF | 2 X 34 | 43.18 | 41.91 |
| 20021112-0XX70XXLF | 2 X 35 | 44.45 | 43.18 |
| 20021112-0XX72XXLF | 2 X 36 | 45.72 | 44.45 |
| 20021112-0XX74XXLF | 2 X 37 | 46.99 | 45.72 |
| 20021112-0XX76XXLF | 2 X 38 | 48.26 | 46.99 |
| 20021112-0XX78XXLF | 2 X 39 | 49.53 | 48.26 |
| 20021112-0XX80XXLF | 2 X 40 | 50.80 | 49.53 |
| 20021112-0XX82XXLF | 2 X 41 | 52.07 | 50.80 |
| 20021112-0XX84XXLF | 2 X 42 | 53.34 | 52.07 |
| 20021112-0XX86XXLF | 2 X 43 | 54.61 | 53.34 |
| 20021112-0XX88XXLF | 2 X 44 | 55.88 | 54.61 |
| 20021112-0XX90XXLF | 2 X 45 | 57.15 | 55.88 |
| 20021112-0XX92XXLF | 2 X 46 | 58.42 | 57.15 |
| 20021112-0XX94XXLF | 2 X 47 | 59.69 | 58.42 |
| 20021112-0XX96XXLF | 2 X 48 | 60.96 | 59.69 |
| 20021112-0XX98XXLF | 2 X 49 | 62.23 | 60.96 |
| 20021112-0XXA0XXLF | 2 X 50 | 63.50 | 62.23 |

NOTES:
 1.MATERIAL:
 HOUSING: HIGH TEMPERATURE THERMOPLASTIC, UL94-V0 BLACK.
 TERMINAL: COPPER ALLOY
 2.THE HOUSING WILL WITHSTAND EXPOSURE TO 260~C PEAK TEMPERATURE FOR 10 SECONDS IN A WAVE SOLDER OR VAPOR PHASE REFLOW OVEN.
 3.THIS PRODUCT MEETS EUROPEAN UNION DIRECTIVES AND OTHER COUNTRY REGULATIONS AS DESCRIBED IN GS-22-008.
 4.PRODUCT SPEC: GS-12-629
 5.PACKAGE SPEC: GS-14-1420

20021112- 0 X X XX X X LF

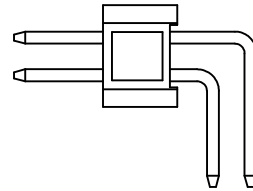
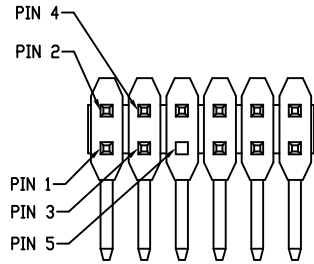


Amphenol FCI

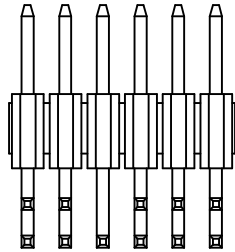
© 2016 AFCI

| | | | | | |
|-------------|----------------|----------|-----------|---------------------------------------|-------------------------------|
| mat'l. code | | surface | tolerance | projection | product family |
| | | ISO 1302 | ISO 406 | ISO 1101 | MINITEK127® |
| ltr | ecn no | dr | date | tolerances unless otherwise specified | title |
| | | | | linear | UNSHROUDED HDR RA TH |
| | | | | angles | |
| | | | | 0±2' | mm |
| | | | | .0±.30 | scale 1:1 |
| | | | | .00±.20 | |
| | | | | .000±.10 | |
| | | dr | ZK HU | 08/01/12 | Amphenol FCI |
| | | eng | ZK HU | 08/01/12 | dwg no |
| | | chr | BIAN RICK | 08/01/12 | sheet 2 of 3 |
| | | app | BIAN RICK | 08/01/12 | size |
| | | | | | 20021112 |
| | | | | | A3 |
| | | | | | type Product Customer Drawing |
| sheet index | revision sheet | | | | |

PART NO.
20021112



| PART NO. | AMOUNT OF PINS | PIN FREE LOADED |
|--------------------|----------------|-----------------|
| 20021112-1XXXXXXLF | 13 | PIN 5 |



20021112-1XXXXXXLF REMOVE PIN 5

Amphenol
FCI

© 2016 AFCI

| | | | | | |
|-------------|----------------|-----------------------|-------------------------------|---|-------------------------------|
| mat'l. code | | surface ISO 1302 ✓ | tolerance ISO 406 ISO 1101 | projection 1101 | product family MINITEK127® |
| ltr | ecn no | dr | date | tolerances unless otherwise specified | title |
| | | | | angles linear .0±.30 .00±.20 0±2' .000±.10 | UNSHROUDED HDR RA TH |
| | | | | dr ZK HU 08/01/12 | dwg no sheet 3 of 3 size |
| | | | | engr ZK HU 08/01/12 | 20021112 A3 |
| | | | | chr BIAN RICK 08/01/12 | type Product Customer Drawing |
| | | | | appd BIAN RICK 08/01/12 | |
| sheet index | revision sheet | | | | |