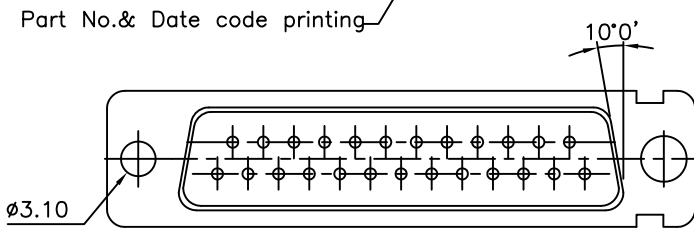
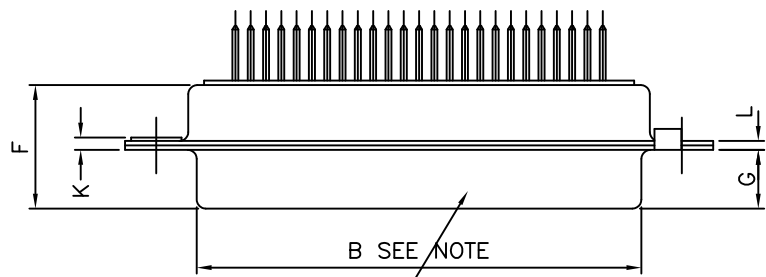
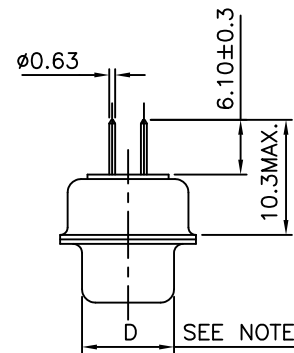
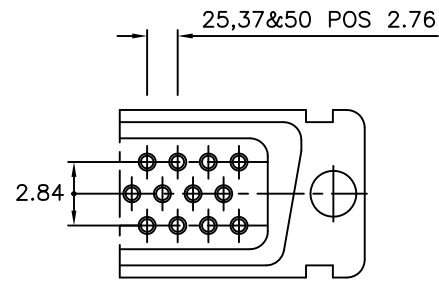


LAYOUT OF 50 POS. CONNECTOR

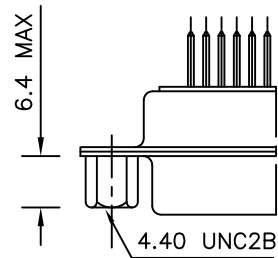


VIEW OF MATING FACE

**ORDERING INFORMATION**

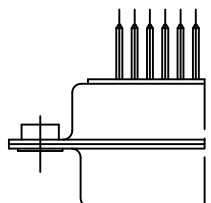
SERIES	D	B	P	V	25	P	3	64	C	T	X	XXX	LF	LEAD FREE
SHELL SIZE	E,A,B,C,D													
CHARACTERISATION	P-DP SERIES													
OPTIONS	BLANK-STANDARD V-FEM. SCREW LOCK HEX. (UNC) L-CLINCH NUT (M3) O-CLINCH NUT (UNC) S-SPACER RIVETTED TO SHELL (S/S ONLY)													
NO.OF CONTACTS	09,15,25,37,50													
CONTACTS	P - PIN S - SOCKET													
	SPECIAL CODES DIMPLES- OPTIONAL X-ON MALE CONNECTORS ONLY SHELL PLATING BLANK-ZINC +Cr3 T-STD. TIN over Cu OPTIONS BLANK-STANDARD G-HARPOON (UNC4-40) CONTACT PLATING 64 - 200 MATING CYCLES 65 - 500 MATING CYCLES TERMINATION TYPE 3-STRAIGHT SPILL													

FEMALE SCREW RIVETTED TO SHELL

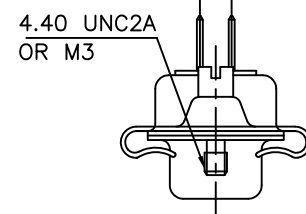


OPTION:-V

CLINCH NUT RIVETTED TO SHELL

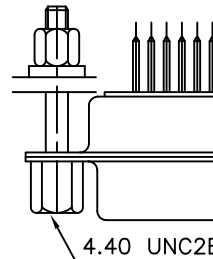


OPTION:-L  
OPTION:-O



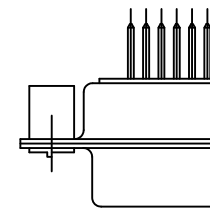
ORD.CODE:-8630-05(E,A,B,C)  
ORD.CODE:-8630-03 D/SHELL FEMALE.  
ORD.CODE:-8630-15 D/SHELL MALE.  
ORD.CODE:-8630-04 E,A,B,C SHELL.  
WITH METAL HOOD.  
FOR 4.40UNC THREAD ADD 'N' TO THE CORRESPONDING ORD.CODE.

EXTENDED FEMALE SCREW- LOCK WITH SPACER



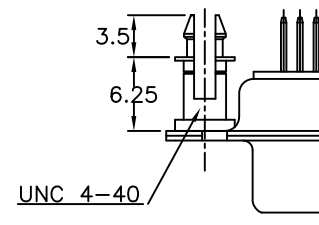
ORD.CODE:-8630-01-062

SPACER RIVETTED TO SHELL



OPTION:-S

HARPOON RIVETTED TO SHELL



OPTION:-G WITH IN COMBINATION WITH L/O

50	P	66.65	52.68	61.11	11.08	14.99	11.09	5.85	55.07	13.31	1.50	1.0
	S	66.65	52.30	61.11	10.62	14.99	11.21	6.05	55.07	13.31	1.10	0.8
37	P	68.94	55.30	63.50	8.23	12.17	11.09	5.85	57.45	10.46	1.50	1.0
	S	68.94	54.71	63.50	7.77	12.17	11.21	6.05	57.45	10.46	1.10	0.8
25	P	52.65	38.84	47.04	8.23	12.17	11.07	5.85	41.02	10.46	1.10	0.8
	S	52.65	38.25	47.04	7.77	12.17	11.21	6.05	41.02	10.46	1.10	0.8
15	P	38.76	25.12	33.32	8.23	12.17	10.99	5.85	27.25	10.46	1.10	0.8
	S	38.76	24.54	33.32	7.77	12.17	11.21	6.05	27.25	10.46	1.10	0.8
09	P	30.43	16.79	24.99	8.23	12.17	10.99	5.85	19.02	10.46	1.10	0.8
	S	30.43	16.21	24.99	7.77	12.17	11.21	6.05	19.02	10.46	1.10	0.8
SHELL SIZE	A	+0.76	+0.25	±0.12	+0.25	+0.76	F MAX	+0.15	+0.51	+0.51	K±0.20	+0.22
	B	-0	-0	-0	-0	-0	-0	-0	-0	-0	-0	-0

TECHNICAL SPECIFICATIONS

SHELLS	: TIN/ZINC PLATED STEEL
INSULATOR MATERIAL	: SELF EXTINGUISHING THERMOPLASTIC- TO UL CLASS 94 V0
	THE HOUSING WILL WITHSTAND EXPOSURE TO 260-265°C IF WE USE PROTECTIVE ADHESIVE (type Kapton or Teflon) OR PROTECTIVE METALLIC DEVICE
CONTACTS DIA ON ACTIVE AREA	: 01 MM.
CONTACTS MATERIAL	: COPPER ALLOY
CONTACT PLATING	: GXT / GOLD OVER NICKEL
OPERATING TEMPERATURE	: -55°C +125°C
OPERATING CURRENT	: 7.5 A PER CONTACT
CONTACT RESISTANCE	: <7.3 mΩ
INSULATION RESISTANCE	: ≥5000 MΩ
MAXIMUM VOLTAGE	: 1000 V.r.m.s
MECHANICAL ENDURANCE	: 500 MATINGS FOR CODE 65 : 200 MATINGS FOR CODE 64
DAMP HEAT	: 56 DAYS FOR CODE 65 : 21 DAYS FOR CODE 64

"This LF product meets European Union Directives and other country regulations as described in GS-22-008"  
The housing will withstand exposure to 260°C peak temperature for 3.5 seconds in a wave solder application with a 1.6mm minimum thick circuit board.  
Pckaging as per GS-14-920

NOTE:-INSIDE DIMENSIONS OF MALE AND OUTSIDE DIMENSIONS OF THE FEMALE CONNECTOR.

mat'l. code	SEE NOTE 4	surface	ISO 1302	tolerance	ISO 406 ISO 1101	projection	product family	D-SUB		
ltr	ecn no	dr	date	tolerances unless otherwise specified		MM	title			
F	I06-0074	GVJ	2006-06-08	angles	linear	scale	D-SUB S/S CONNECTOR (DP SERIES WITH ASSEMBLY OPTIONS)			
G	I08-0047	AMR	2008-03-25				dwg no			
H	I08-0125	AMR	2008-09-25				sheet 1 of 1			
J	I08-0139	AMR	2008-10-13	dr	Mini K Vandanath	1999-03-20	size		5	
K	I09-0075	AMR	2009-05-14	enr	George V Joseph	1999-03-20	A3			
L	I11-0003	AMR	2011-01-06	chr	Abhilash M R	2008-09-25	C-DSUB-0067			
M	I11-0079	AMR	2011-05-02	appd	Sudhir Varma	2008-09-25	type Product Customer Drawing			
sheet index	revision	M								
	sheet	1								