

SMD ONE PORT 315.00 MHz SAW RESONATOR



5 x 5 x 1.35mm

ASR315E



RoHS
Compliant

STANDARD SPECIFICATIONS:

CHARACTERISTICS		UNIT	MIN.	TYP.	MAX.
Center Frequency Fo		MHz	314.925	315.000	315.075
Tolerance from Fo		KHz		±75	
Insertion Loss		dB	-	1.4	2.0
Quality Factor	Unloaded	-		10,750	
	50Ω loaded			1,600	
Temperature Stability	Turnover Temperature	°C	25.0		55
	Turnover Frequency	KHz		Fo	
	Freq. Temp. Coefficient	ppm/°C ²		0.03	
Frequency Aging		ppm/year		<±10	
DC Insulation Resistance		MΩ	1.0		
RF Equivalent RLC Model	Motional Resistance R ₁	Ω		17.5	26
	Motional Inductance L ₁	μH		95.0359	
	Motional Capacitance C ₁	fF		2.6889	
	Shunt Capacitance C ₀	pF	1.8	3.0	2.2
Operating temp.		°C	-40°C to +85°C		
Storage temp.		°C	-45°C to +85°C		
Max. Rating	DC voltage	V	±30		
Soldering Temperature		°C	250		
RF Power Dissipation		dBm	0		

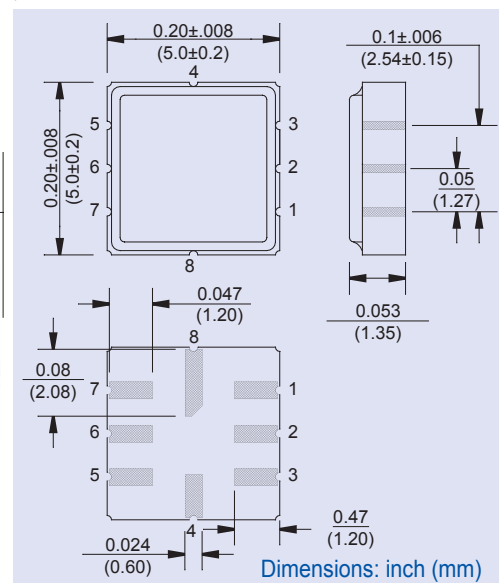
Data measured with: Source Impedance: Z_s=50Ω, Load Impedance: Z_L=50Ω, TA=25°C
Electrostatic Sensitive Device. Handle with precaution.

MARKING:

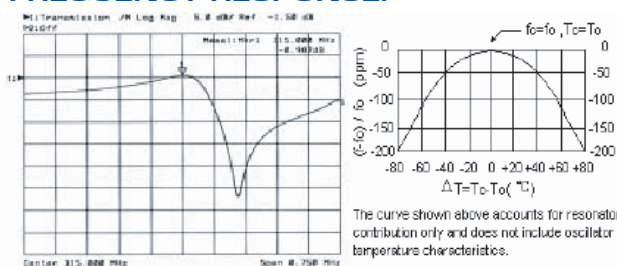
- 315.00 (315 Frequency in MHz)
- AR ZYX (ZY: Date code Z for month from A to L; Y for year, i.e. 4 for 2004 X: Traceability code)

PIN NO.	CONNECTIONS
1	Input GND
2	Input
5	Output GND
6	Output
3,7	To be GNDed
4,8	Case GND

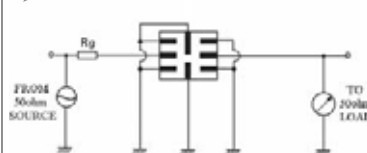
OUTLINE DRAWING:



FREQUENCY RESPONSE:



TEST CIRCUIT:



ATTENTION: Abracon Corporation's products are COTS – Commercial-Off-The-Shelf products; suitable for Commercial, Industrial and, where designated, Automotive Applications. Abracon's products are not specifically designed for Military, Aviation, Aerospace, Life-dependant Medical applications or any application requiring high reliability where component failure could result in loss of life and/or property. For applications requiring high reliability and/or presenting an extreme operating environment, written consent and authorization from Abracon Corporation is required. Please contact Abracon Corporation for more information.

ABRACON IS
ISO9001:2008
CERTIFIED



30332 Esperanza, Rancho Santa Margarita, California 92688
tel 949-546-8000 | fax 949-546-8001 | www.abracon.com