

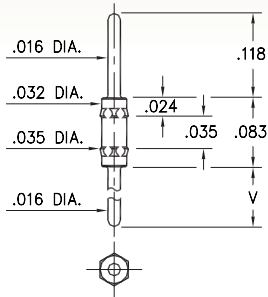
MALE PCB PINS

PRINTED CIRCUIT PINS

4006

4006-X-00-XX-00-00-03-0

Hex press-fit in .034 mounting hole

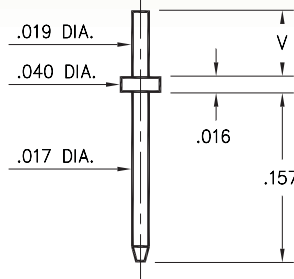


| Basic Part Number | Length V |
|-------------------|----------|
| 4006-0 | .118 |
| 4006-1 | .188 |
| 4006-2 | .288 |

3121

3121-X-00-XX-00-00-08-0

Solder mount in .023 mounting hole
Material is annealed.

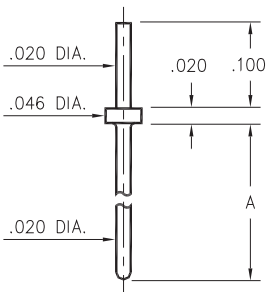


| Basic Part Number | Substrate Thickness | Length V |
|-------------------|---------------------|----------|
| 3121-1 | .025 | .061 |
| 3121-2 | .040 | .075 |

3128

3128-X-00-XX-00-00-08-0

Solder mount in .024 min. mounting hole

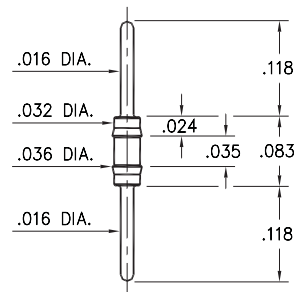


| Basic Part Number | Length A |
|-------------------|----------|
| 3128-1 | .250 |
| 3128-2 | .425 |
| 3128-3 | .525 |
| 3128-4 | .550 |
| 3128-5 | .930 |

3006

3006-0-00-XX-00-00-03-0

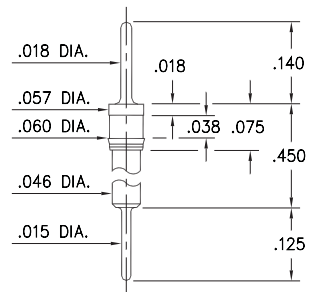
Press-fit in .034 mounting hole



8885

8885-0-00-XX-00-00-03-0

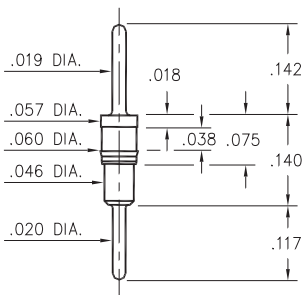
Press-fit in .057 mounting hole



6218

6218-0-00-XX-00-00-03-0

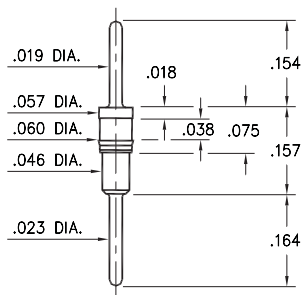
Press-fit in .057 mounting hole



5012

5012-0-00-XX-00-00-03-0

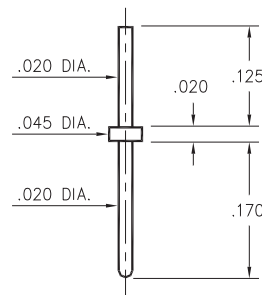
Press-fit in .057 mounting hole



9081

9081-0-00-XX-00-00-08-0

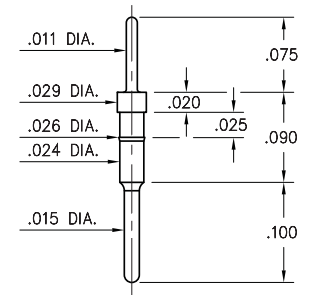
Solder mount in .024 mounting hole



3039

3039-0-00-15-00-00-03-0

Press-fit in .025 mounting hole



SPECIFICATIONS:

Pin Material: Brass Alloy 360, 1/2 Hard
(Except where noted)

Dimensions: Inches

Tolerances On: Lengths: $\pm .005$
Diameters: $\pm .002$
Angles: $\pm 2^\circ$



ORDER CODE: XXXX - X - 00 - XX - 00 - 00 - XX - 0

BASIC PART #

SPECIFY PIN FINISH:

- 01 200 μ m TIN/LEAD OVER NICKEL
- ◆ 80 200 μ m TIN OVER NICKEL (RoHS)
- ◆ 15 10 μ m GOLD OVER NICKEL (RoHS)
- ◆ 21 20 μ m GOLD OVER NICKEL (RoHS)
- ◆ 34 50 μ m GOLD OVER NICKEL (RoHS)

