

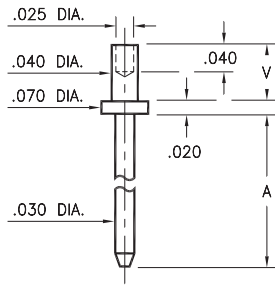
MALE PCB PINS

PRINTED CIRCUIT PINS

3110/3111

311X-X-00-XX-00-00-08-0

Swage mount in .043 hole

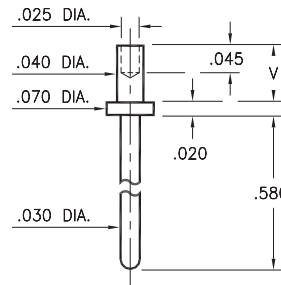


Basic Part Number	Board Thickness	Length A	Length V
3110-1	.031	.150	.051
3110-2	.062	.150	.082
3110-3	.094	.150	.113
3111-1	.031	.300	.051
3111-2	.062	.300	.082
3111-3	.094	.300	.113

3150

3150-X-00-XX-00-00-08-0

Swage mount in .043 mounting hole



Basic Part Number	Board Thickness	Length V
3150-1	.031	.051
3150-2	.062	.082

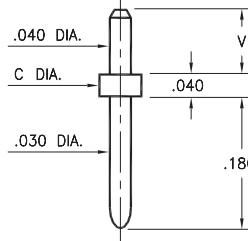
3136/3137

313X-X-00-XX-00-00-08-0

Solder mount in .043 mounting hole

3137-1 is available on 16mm wide carrier tape: 580 parts per 13" reel.

See page 224.1 for Tape & Reel details



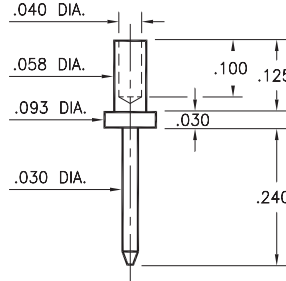
Basic Part Number	Board Thickness	Length V	Flange Dia. C
3136-1	.062	.082	
3136-2	.094	.110	.078
3136-3	.125	.145	
3137-1	.062	.082	
3137-2	.094	.110	.062
3137-3	.125	.145	
3137-4	.156	.185	

3148

3148-3-00-XX-00-00-08-0

Swage mount in .062 hole

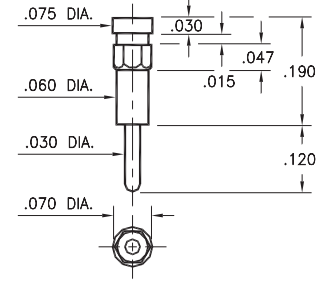
For a .094 thick board



8815

8815-0-00-XX-00-00-03-0

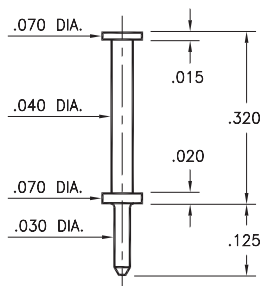
Hex press-fit in .066 plated through-hole



6821

6821-0-00-XX-00-00-08-0

Turret terminal pin

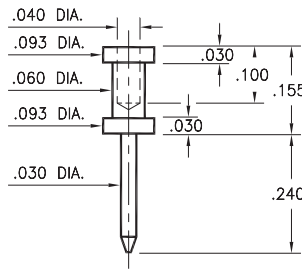


3132

3132-0-00-XX-00-00-08-0

Wire crimp termination, Annealed

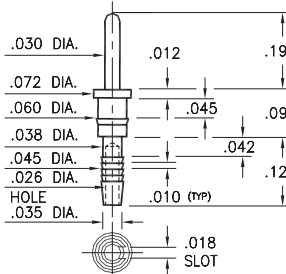
Accepts wire sizes 22 AWG Max. / 24 AWG Min.



5601

5601-0-01-XX-00-00-03-0

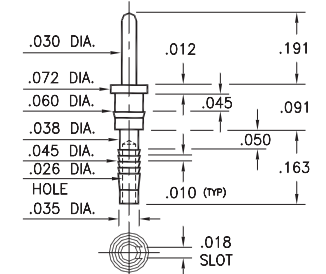
Compliant press-fit in .040 ± .003 plated through-hole. For .060" → .100" thick board



5602

5602-0-01-XX-00-00-03-0

Compliant press-fit in .040 ± .003 plated through-hole. For .090" → .130" thick board



SPECIFICATIONS:

Pin Material: Brass Alloy 360, 1/2 Hard
(Except swage pins which are annealed)

Dimensions: Inches

Tolerances On: Lengths: ± .005
Diameters: ± .002
Angles: ± 2°



ORDER CODE: **XXXX - X - 0X - XX - 00 - 00 - XX - 0**

BASIC PART #

SPECIFY PIN FINISH:

- 01 200 μ" TIN/LEAD OVER NICKEL
- ◆ 80 200 μ" TIN OVER NICKEL (RoHS)
- ◆ 15 10 μ" GOLD OVER NICKEL (RoHS)
- ◆ 21 20 μ" GOLD OVER NICKEL (RoHS)
- ◆ 34 50 μ" GOLD OVER NICKEL (RoHS)

