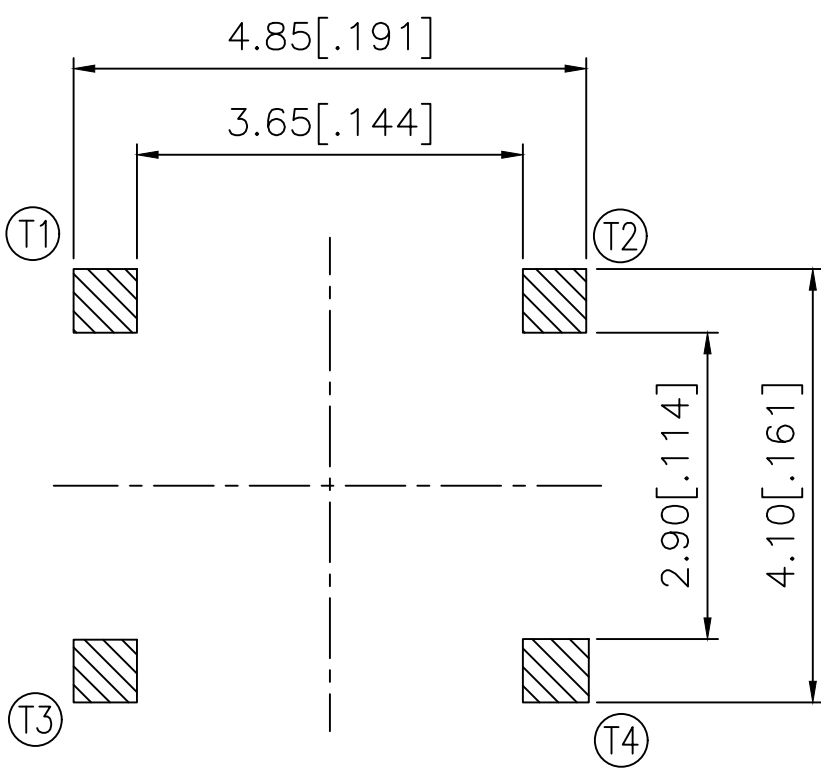
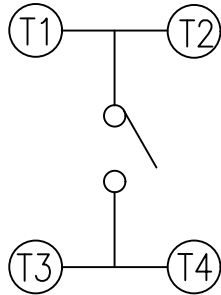
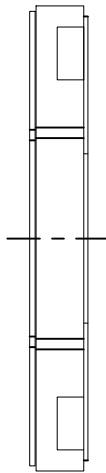
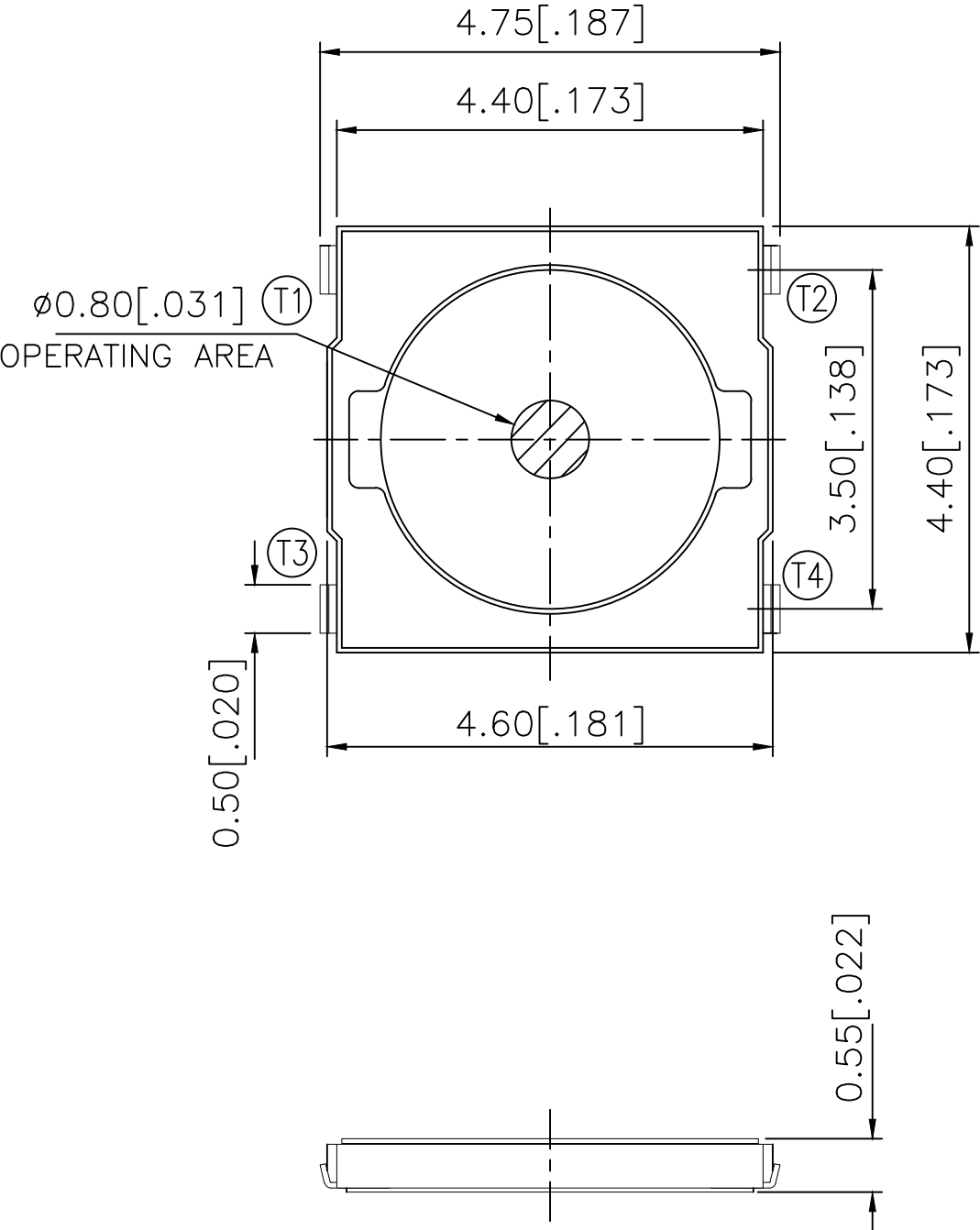


REVISIONS					
P	LTR	DESCRIPTION	DATE	DWN	APVD
	2	REVISE NOTE	06AUG2018	GCM	AS


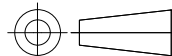


P.C.B. LAYOUT

CIRCUIT DIAGRAM

260±50	MCSLPT4644B4TR	2337234-4
200±50	MCSLPT4644B3TR	2337234-3
160±50	MCSLPT4644B2TR	2337234-2
100±50	MCSLPT4644B1TR	2337234-1
ACTUATION FORCE (gf)	SMART PART NUMBER	PART NUMBER

PRELIMINARY

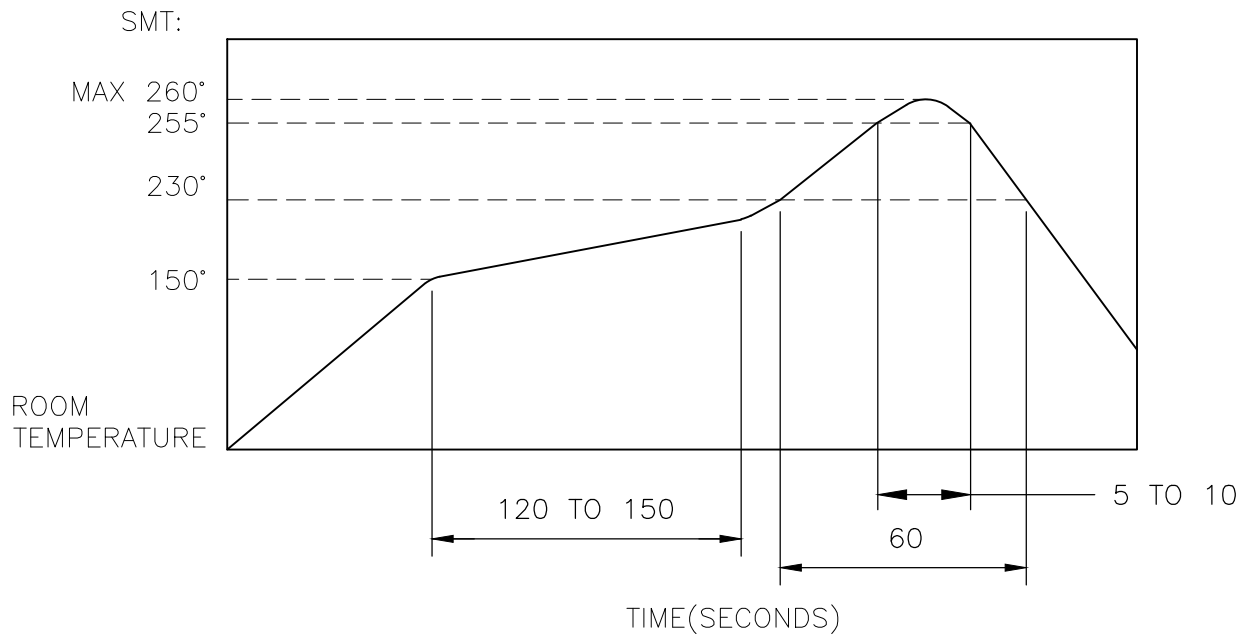
THIS DRAWING IS A CONTROLLED DOCUMENT.		DWN GANESH C M 04JUL2018	<div>PRELIMINARY</div> <div>TE Connectivity Ltd.</div> <div>NAME SWITCH, TACTILE, LOW-PROFILE, MICRO-MINI, 4.6 x 4.4 x 0.55, J BEND</div>			
DIMENSIONS: mm [INCHES]	TOLERANCES UNLESS OTHERWISE SPECIFIED:	CHK ALEXANDER SHARPE 03JUL2018				
		APVD ALEXANDER SHARPE 04JUL2018				
		PRODUCT SPEC —				
	0 PLC ± —	APPLICATION SPEC —	SIZE A3	CAGE CODE 00779	DRAWING NO C-2337234	RESTRICTED TO —
	1 PLC ± —					
	2 PLC ± 0.2 [.008]					
MATERIAL —	3 PLC ± —	WEIGHT	CUSTOMER DRAWING	SCALE NTS	SHEET 1 of 3	REV 2
	4 PLC ± —					
	ANGLES ± —					

THIS DRAWING IS UNPUBLISHED.	RELEASED FOR PUBLICATION
© COPYRIGHT — TE Connectivity Ltd.	ALL RIGHTS RESERVED.

NOTES:

1. MATERIALS:  
TERMINAL: COPPER ALLOY, SILVER FINISH  
BASE: THERMOPLASTIC, UL 94V-0, BLACK  
TAPE: POLYIMIDE  
CONTACT: STAINLESS STEEL, SILVER FINISH
2. COMPLIANCE:  
ALL MATERIALS AND FINISHES SHALL COMPLY WITH EU  
DIRECTIVE 2002/95/EC OF 27JAN2003(RoHS)
3. SPECIFICATIONS:  
RATING: 50 mA, 12V DC  
CONTACT RESISTANCE: 100mΩ MAXIMUM (INITIAL)  
INSULATION RESISTANCE: 100MΩ MINIMUM (INITIAL)  
DIELECTRIC STRENGTH: 300V AC, 1 MINUTE  
OPERATING LIFE: 2337234-1 (100gf) = 1,000,000 CYCLES WITH LOAD  
2337234-2 (160gf) = 1,000,000 CYCLES WITH LOAD  
2337234-3 (200gf) = 500,000 CYCLES WITH LOAD  
2337234-4 (260gf) = 500,000 CYCLES WITH LOAD  
  
TRAVEL: 0.2±0.1 [.008±.004]  
ACTUATION FORCE: 2337234-1 = 100±50gf  
2337234-2 = 160±50gf  
2337234-3 = 200±50gf  
2337234-4 = 260±50gf  
  
OPERATING TEMPERATURE: -20° TO 70°C  
STORAGE TEMPERATURE: -30° TO 80°C

4. SOLDER CONDITIONS:



THE CONDITON NOTED ABOVE IS THE TEMPERATURE OF THE COPPER FOIL ON THE SURFACE OF THE PCB. THERE ARE CASES WHERE THE TEMPERATURE OF THE BOARD GREATLY DIFFERS FROM THE SURFACE OF THE SWITCH. DO NOT ALLOW THE SURFACE TEMPERATURE OF THE SWITCH TO EXCEED 260°C.

PRELIMINARY

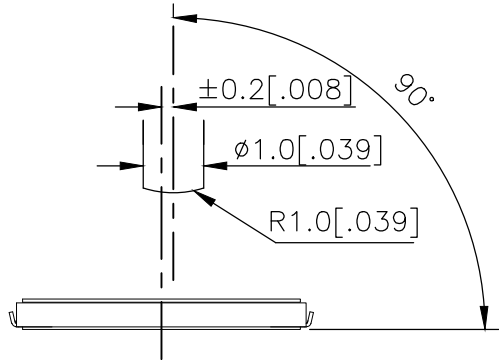
REVISIONS					
P	LTR	DESCRIPTION	DATE	DWN	APVD
	—	SEE SHEET 1	—	—	—

MANUAL SOLDERING:

SOLDERING TEMPERATURE	350°C MAXIMUM
CONTINUOUS SOLDERING TIME	5 SECONDS MAXIMUM

HANDLING PRECAUTIONS:

1. CARE SHOULD BE EXERCISED SO THAT FLUX FROM THE TOP SURFACE OF THE PRINTED CIRCUIT BOARD DOES NOT ADHERE TO THE SWITCH.  
2. DO NOT WASH THE SWITCH
5. OPERATING PRECAUTIONS:  
1. DO NOT ACTUATE THE SWITCH WITH EXCESSIVE FORCE  
2. DISCONTINUE FORCE AFTER THE SWITCH HAS BEEN ACTUATED SO AS TO AVOID DEFORMATION OF THE COMPONENTS OF THE SWITCH. DEFORMATION OF THE COMPONENTS MAY CAUSE THE SWITCH TO MALFUNCTION.  
3. ALIGN THE PLUNGER WITH THE SWITCH TO INSURE PROPER OPERATION



RECOMMENDED OPERATING CONDITIONS

6. STORAGE CONDITIONS:

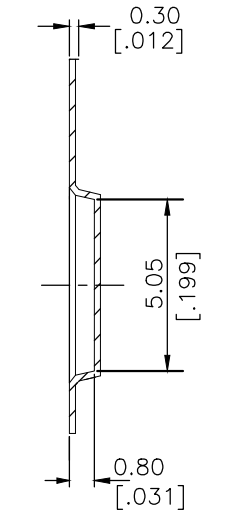
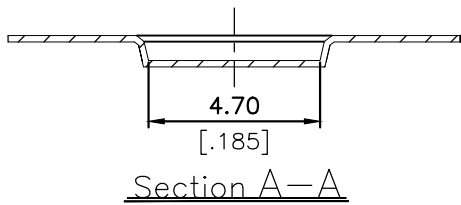
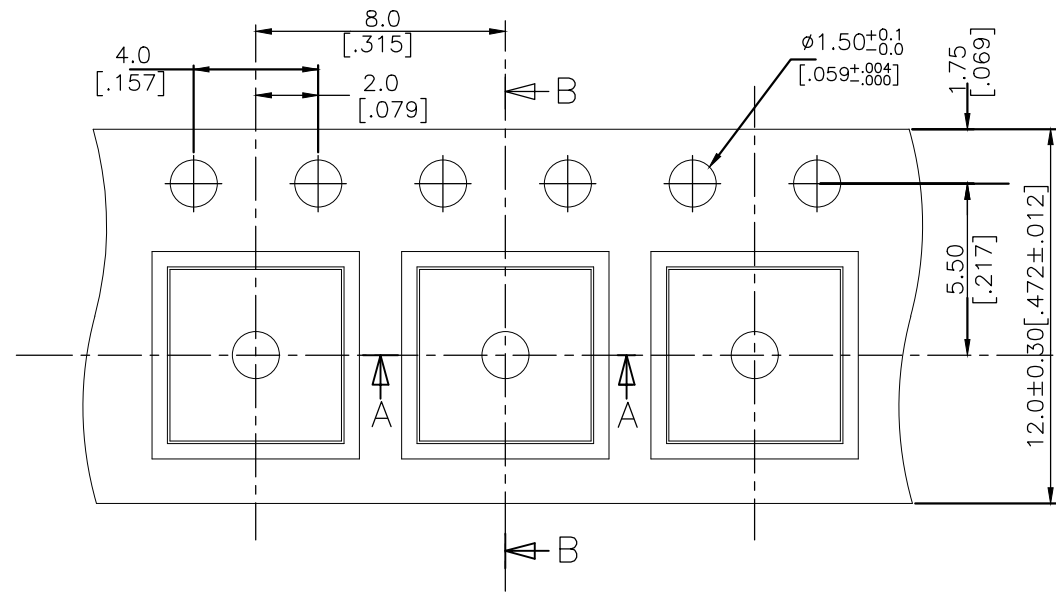
- AVOID THE FOLLOWING AS EXPOSURE MAY AFFECT THE PERFORMANCE AND/OR THE SOLDERABILITY OF THE SWITCH:
1. TEMPERATURE OF -10° TO 40°C AND 85% HUMIDITY  
2. EXPOSURE TO CORROSIVE GAS  
3. STORAGE OVER 6 MONTHS  
4. EXPOSURE TO DIRECT SUNLIGHT
- STORAGE CONDITIONS SHOULD PREVENT HEAVY IMPACT OR LOADING
- AFTER OPENING THE PACKAGE, UNUSED SWITCHES MUST BE REPACKAGED IN A MOISTURE-PROOF AND AIRTIGHT ENVIRONMENT.

THIS DRAWING IS A CONTROLLED DOCUMENT.		DWN 04JUL2018 GANESH C M	TE Connectivity Ltd.		
DIMENSIONS: mm [INCHES]	TOLERANCES UNLESS OTHERWISE SPECIFIED:	CHK 04JUL2018 ALEXANDER SHARPE			
		APVD 04JUL2018 ALEXANDER SHARPE	NAME SWITCH, TACTILE, LOW-PROFILE, MICRO-MINI, 4.6 x 4.4 x 0.55, J BEND		
	0 PLC ± — 1 PLC ± — 2 PLC ± 0.2 [.008] 3 PLC ± — 4 PLC ± — ANGLES ± —	PRODUCT SPEC —	SIZE A3		
		APPLICATION SPEC —	CAGE CODE 00779		
MATERIAL —	FINISH —	WEIGHT	DRAWING NO C-2337234		
CUSTOMER DRAWING		SCALE NTS	SHEET 2 OF 3	REV 2	

REVISIONS					
P	LTR	DESCRIPTION	DATE	DWN	APVD
	—	SEE SHEET 1	—	—	—

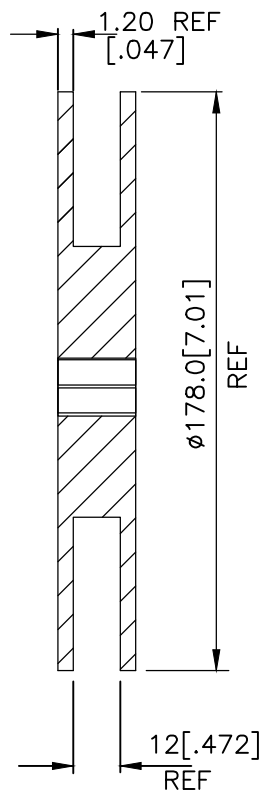
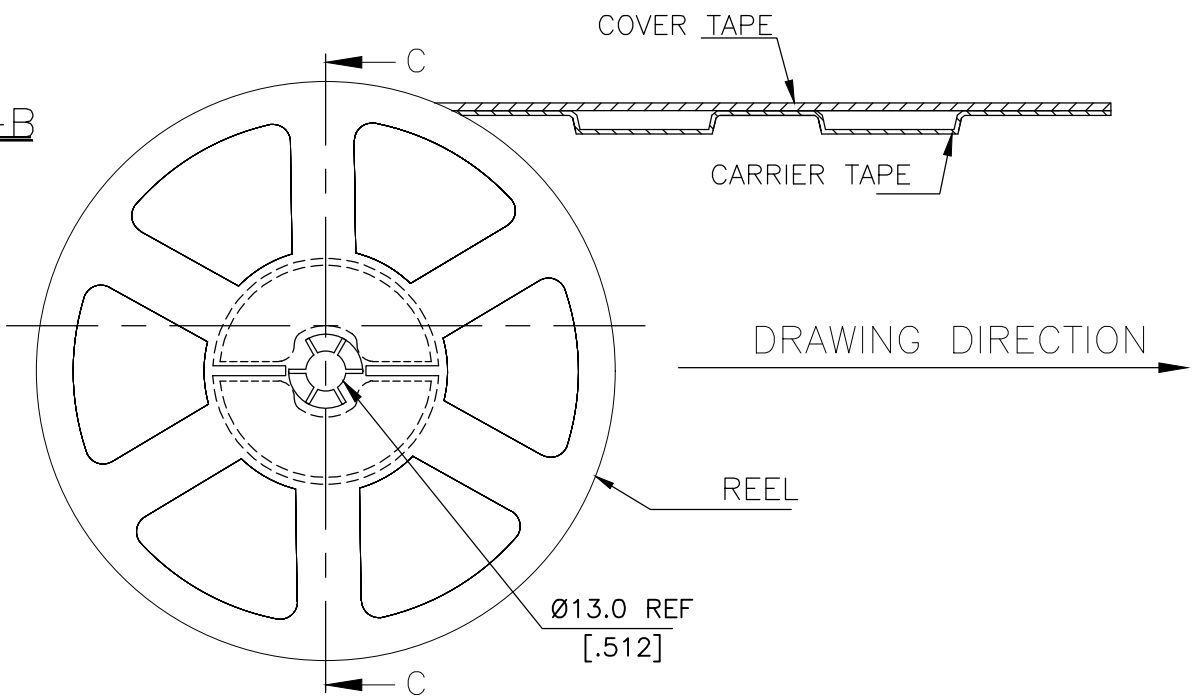
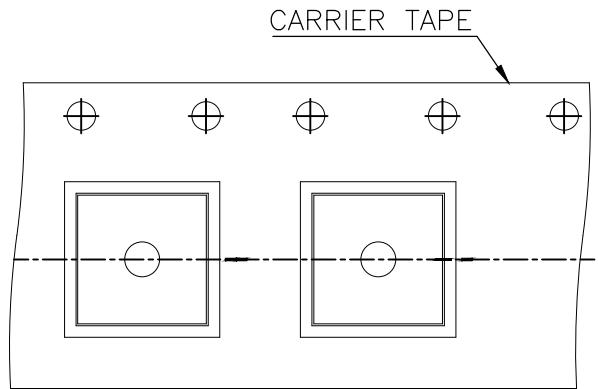
PACKAGING:  
2,500 SWITCHES PER REEL

THE DIMENSIONS OF CARRIER TAPE AND REEL




Section B—B

ORIENTATION OF PILOT HOLES



Section C—C

PRELIMINARY

THIS DRAWING IS A CONTROLLED DOCUMENT.		DWN GANESH C M 04JUL2018	 TE Connectivity Ltd.		
DIMENSIONS: mm [INCHES]		CHK ALEXANDER SHARPE 04JUL2018			
TOLERANCES UNLESS OTHERWISE SPECIFIED:		APVD ALEXANDER SHARPE 04JUL2018	NAME SWITCH, TACTILE, LOW-PROFILE, MICRO-MINI, 4.6 x 4.4 x 0.55, J BEND		
0 PLC ± — 1 PLC ± — 2 PLC ± 0.2 [0.008] 3 PLC ± — 4 PLC ± — ANGLES ± —		PRODUCT SPEC —	SIZE A3		
MATERIAL —		APPLICATION SPEC —	CAGE CODE 00779		
FINISH —		WEIGHT —	DRAWING NO C-2337234		
		CUSTOMER DRAWING	RESTRICTED TO —		
			SCALE NTS		
			SHEET 3 OF 3		
			REV 2		