

REVISIONS					
P	LTR	DESCRIPTION	DATE	DWN	APVD
	—	SEE SHEET 1	—	—	—

NOTES:

1. MATERIALS:

TERMINAL: COPPER ALLOY, SILVER FINISH
BASE: THERMOPLASTIC, UL 94V-0, BLACK
ACTUATOR: SILICONE RUBBER
CONTACT: STAINLESS STEEL, SILVER FINISH

2. COMPLIANCE:

ALL MATERIALS AND FINISHES SHALL COMPLY WITH EU
DIRECTIVE 2002/95/EC OF 27JAN2003(RoHS)

3. SPECIFICATIONS:

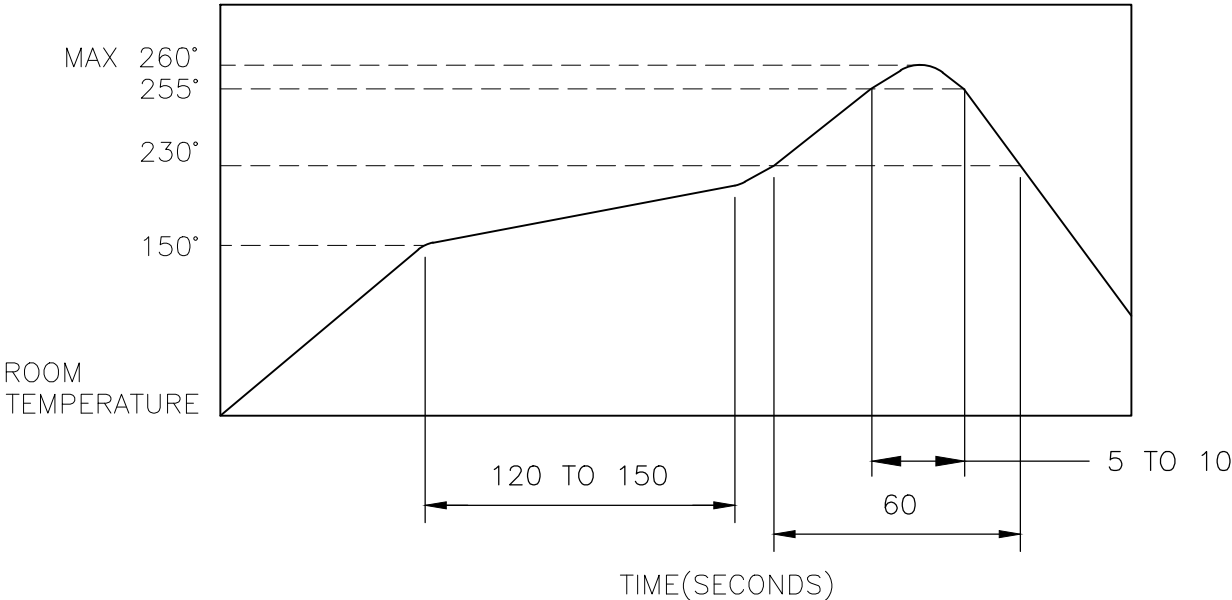
RATING: 50 mA, 12V DC
CONTACT RESISTANCE: 100mΩ MAXIMUM (INITIAL)
INSULATION RESISTANCE: 100MΩ MINIMUM (INITIAL)
DIELECTRIC STRENGTH: 300V AC, 1 MINUTE
OPERATING LIFE: 2337235-1 (100gf) = 1,000,000 CYCLES WITH LOAD
 2337235-2 (160gf) = 1,000,000 CYCLES WITH LOAD
 2337235-3 (200gf) = 500,000 CYCLES WITH LOAD
 2337235-4 (260gf) = 500,000 CYCLES WITH LOAD

TRAVEL: 0.2±0.1 (.008±.004)
ACTUATION FORCE: 2337235-1 = 100±50gf
 2337235-2 = 160±50gf
 2337235-3 = 200±50gf
 2337235-4 = 260±50gf

OPERATING TEMPERATURE: -20° TO 70°C
STORAGE TEMPERATURE: -30° TO 80°C

4. SOLDER CONDITIONS :

SMT:



THE CONDITON NOTED ABOVE IS THE TEMPERATURE OF THE COPPER
FOIL ON THE SURFACE OF THE PCB. THERE ARE CASES WHERE THE
TEMPERATURE OF THE BOARD GREATLY DIFFERS FROM THE SURFACE
OF THE SWITCH. DO NOT ALLOW THE SURFACE TEMPERATURE
OF THE SWITCH TO EXCEED 260°C.

MANUAL SOLDERING:

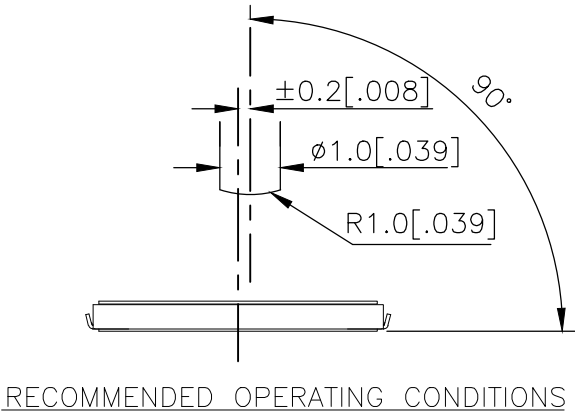
SOLDERING TEMPERATURE	350°C MAXIMUM
CONTINUOUS SOLDERING TIME	5 SECONDS MAXIMUM

HANDLING PRECAUTIONS:

1. CARE SHOULD BE EXERCISED SO THAT FLUX FROM THE TOP SURFACE
OF THE PRINTED CIRCUIT BOARD DOES NOT ADHERE TO THE SWITCH.
2. DO NOT WASH THE SWITCH

5. OPERATING PRECAUTIONS:

1. DO NOT ACTUATE THE SWITCH WITH EXCESSIVE FORCE
2. DISCONTINUE FORCE AFTER THE SWITCH HAS BEEN ACTUATED SO AS TO AVOID
DEFORMATION OF THE COMPONENTS OF THE SWITCH. DEFORMATION OF THE
COMPONENTS MAY CAUSE THE SWITCH TO MALFUNCTION.
3. ALIGN THE PLUNGER WITH THE SWITCH TO INSURE PROPER OPERATION



6. STORAGE CONDITIONS:


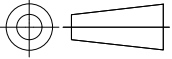
AVOID THE FOLLOWING AS EXPOSURE MAY AFFECT THE PERFORMANCE AND/OR
THE SOLDERABILITY OF THE SWITCH:

1. TEMPERATURE OF -10° TO 40°C AND 85% HUMIDITY
2. EXPOSURE TO CORROSIVE GAS
3. STORAGE OVER 6 MONTHS
4. EXPOSURE TO DIRECT SUNLIGHT

STORAGE CONDITIONS SHOULD PREVENT HEAVY IMPACT OR LOADING

AFTER OPENING THE PACKAGE, UNUSED SWITCHES MUST BE REPACKAGED IN A
MOISTURE-PROOF AND AIRTIGHT ENVIRONMENT.

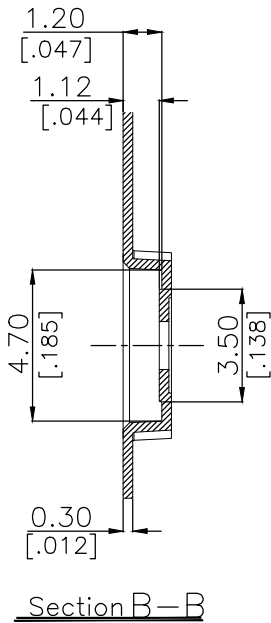
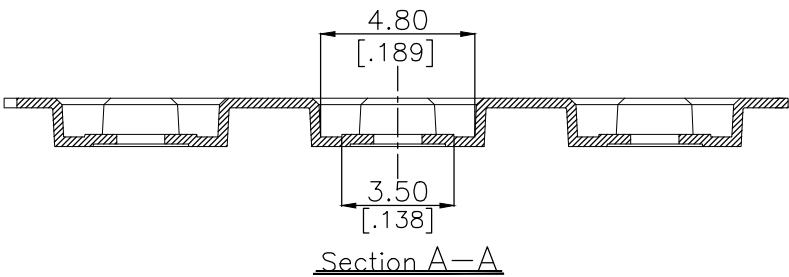
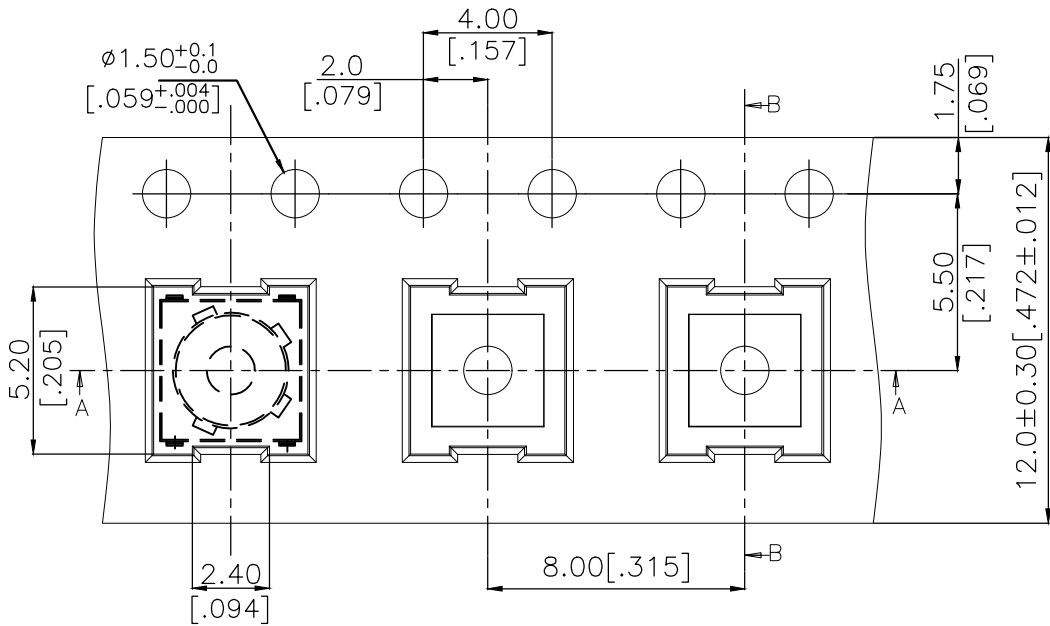
PRELIMINARY

THIS DRAWING IS A CONTROLLED DOCUMENT.		DWN 04JUL2018 GANESH C M	 TE Connectivity Ltd.		
DIMENSIONS: mm [INCHES]		CHK 04JUL2018 ALEXANDER SHARPE			
		APVD 04JUL2018 ALEXANDER SHARPE	NAME SWITCH, TACTILE, LOW-PROFILE, MICRO-MINI, 4.6 x 4.4 x 1.05, J BEND		
		PRODUCT SPEC	—		
TOLERANCES UNLESS OTHERWISE SPECIFIED:		APPLICATION SPEC	—		
0 PLC ± — 1 PLC ± — 2 PLC ± 0.2 [.008] 3 PLC ± — 4 PLC ± — ANGLES ± —		—	SIZE	CAGE CODE	DRAWING NO
MATERIAL		WEIGHT	A3	00779	C=2337235
FINISH		CUSTOMER DRAWING	SCALE	SHEET	REV
—			NTS	2 OF 3	2

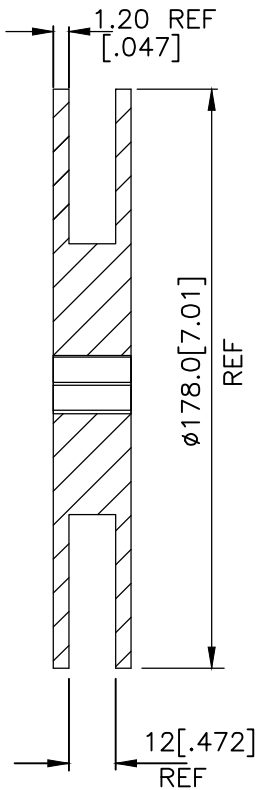
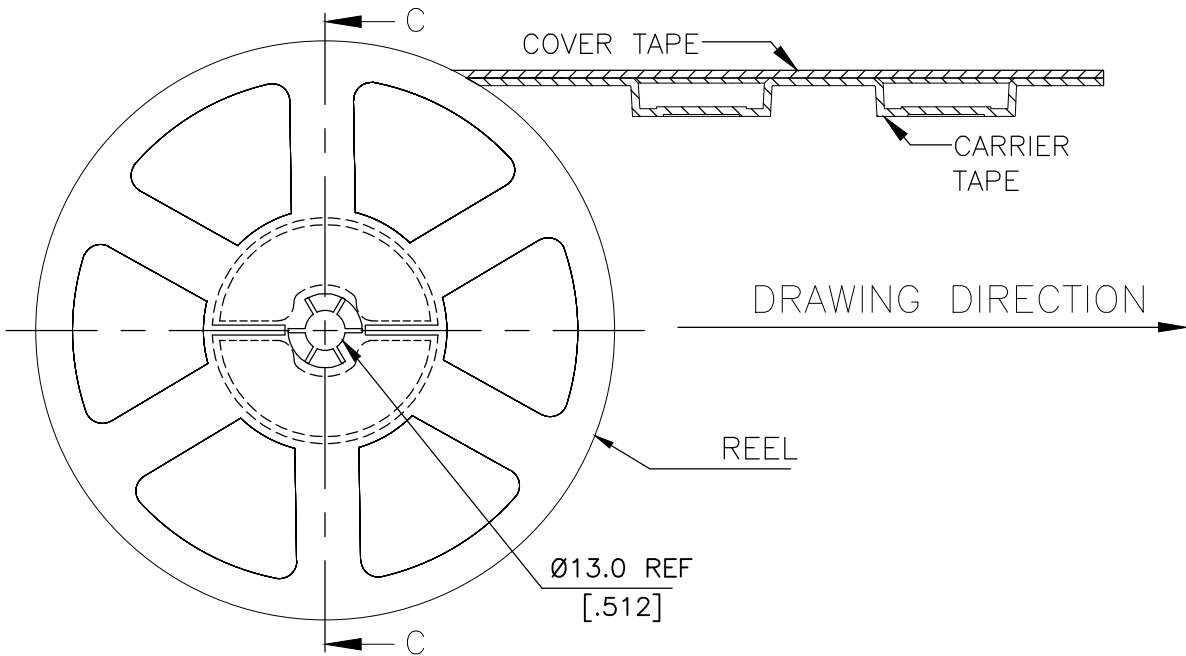
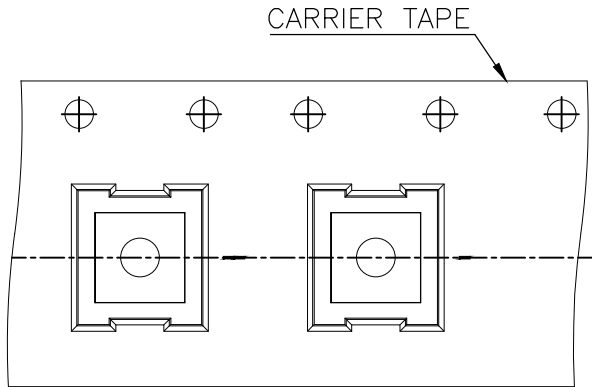
REVISIONS					
P	LTR	DESCRIPTION	DATE	DWN	APVD
	—	SEE SHEET 1	—	—	—

PACKAGING:
1,500 SWITCHES PER REEL

THE DIMENSIONS OF CARRIER TAPE AND REEL



ORIENTATION OF PILOT HOLES



PRELIMINARY

THIS DRAWING IS A CONTROLLED DOCUMENT.		DWN GANESH C M 04JUL2018	TE Connectivity Ltd.		
DIMENSIONS: mm [INCHES]		CHK ALEXANDER SHARPE 04JUL2018			
TOLERANCES UNLESS OTHERWISE SPECIFIED:		APVD ALEXANDER SHARPE 04JUL2018	NAME SWITCH, TACTILE, LOW-PROFILE, MICRO-MINI, 4.6 x 4.4 x 1.05, J BEND		
MATERIAL		PRODUCT SPEC	SIZE A3	CAGE CODE 00779	DRAWING NO C-2337235
FINISH		APPLICATION SPEC	RESTRICTED TO		
—		WEIGHT	—		
—		CUSTOMER DRAWING	SCALE NTS	SHEET 3 OF 3	REV 2